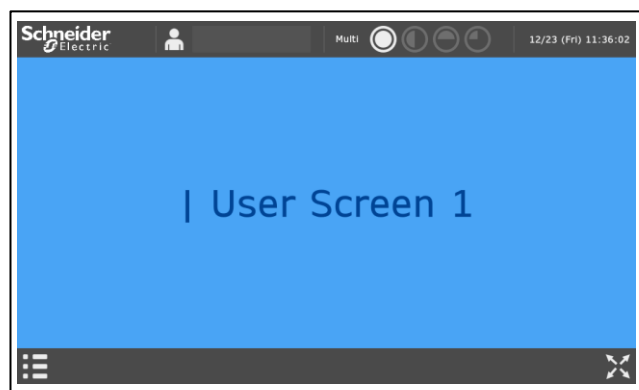


# Sample Templates Document: Layout - Dynamic Multiple Screen.blu



You agree not to reproduce, other than for your own personal, noncommercial use, all or part of this document on any medium whatsoever without permission of Schneider Electric, given in writing. You also agree not to establish any hypertext links to this document or its content.

Schneider Electric does not grant any right or license for the personal and noncommercial use of the document or its content, except for a non-exclusive license to consult it on an "as is" basis, at your own risk. All other rights are reserved.

All pertinent state, regional, and local safety regulations must be observed when installing and using this product. For reasons of safety and to help ensure compliance with documented system data, only the manufacturer should perform repairs to components.

When devices are used for applications with technical safety requirements, the relevant instructions must be followed.

Failure to use Schneider Electric software or approved software with our hardware products may result in injury, harm, or improper operating results.

Failure to observe this information can result in injury or equipment damage.

## Safety Information



### Important Information

#### NOTICE

Read these instructions carefully, and look at the equipment to become familiar with the device before trying to install, operate, service, or maintain it. The following special messages may appear throughout this documentation or on the equipment to warn of potential hazards or to call attention to information that clarifies or simplifies a procedure.



The addition of this symbol to a "Danger" or "Warning" safety label indicates that an electrical hazard exists which will result in personal injury if the instructions are not followed.



This is the safety alert symbol. It is used to alert you to potential personal injury hazards. Obey all safety messages that follow this symbol to avoid possible injury or death.

### **DANGER**

**DANGER** indicates a hazardous situation which, if not avoided, **will result in** death or serious injury.

### **WARNING**

**WARNING** indicates a hazardous situation which, if not avoided, **could result in** death or serious injury.

### **CAUTION**

**CAUTION** indicates a hazardous situation which, if not avoided, **could result in** minor or moderate injury.

### **NOTICE**

**NOTICE** is used to address practices not related to physical injury.

#### PLEASE NOTE

Electrical equipment should be installed, operated, serviced, and maintained only by qualified personnel. No responsibility is assumed by Schneider Electric for any consequences arising out of the use of this material.

A qualified person is one who has skills and knowledge related to the construction and operation of electrical equipment and its installation, and has received safety training to recognize and avoid the hazards involved.

---

## About the Book

---



### At a Glance

#### Document Scope

This manual describes how to use this product.

#### Validity Note

This documentation is valid for this product.

The technical characteristics of the device(s) described in this manual also appear online at <http://www.pro-face.com>.

The characteristics presented in the present document should be the same as those that appear online. In line with our policy of constant improvement we may revise content over time to improve clarity and accuracy. In the event that you see a difference between the document and online information, use the online information as your reference.

#### Registered Trademarks

Microsoft and Windows are registered trademarks of Microsoft Corporation in the United States and/or other countries.

Product names used in this manual may be the registered trademarks owned by the respective proprietors.

#### Related Documents

You can download the manuals related to this product, such as the software manual, from our support site at <http://www.pro-face.com/trans/en/manual/1001.html>.

#### Product Related Information

If the equipment is used in a manner not specified by the manufacturer, the protection provided by the equipment may be impaired.

In the event this product does not run properly due to whatever reason, it may be difficult or impossible to identify a function. Functions that may present a hazard if not immediately executed, such as a fuel shut-off, must be provided independently of this product. The machine's control system design must take into account the operator being unable to control the machine or making mistakes in the control of the machine.

### **WARNING**

#### **UNINTENDED EQUIPMENT OPERATION**

The application of this product requires expertise in the design and programming of control systems. Only persons with such expertise should be allowed to program, install, alter, and apply this product.

- Follow all local and national safety standards.

**Failure to follow these instructions can result in death, serious injury, or equipment damage.**

For additional information, refer to NEMA ICS 1.1 (latest edition), "Safety Guidelines for the Application, Installation, and Maintenance of Solid State Control" and to NEMA ICS 7.1 (latest edition), "Safety Standards for Construction and Guide for Selection, Installation and Operation of Adjustable-Speed Drive Systems" or their equivalent governing your particular location.

## Table of Content

Safety Information .....	3
About the Book .....	4
Template Overview .....	6
Project structure.....	6
Run Time Behavior .....	7
How to copy the objects to your project file.....	9
How to Configure Screens .....	19
How to Configure User Management .....	23
How to Configure Language Table .....	25

Target: ST-6500WAD

Driver: None

BLUE version 3.3 SP1 or later

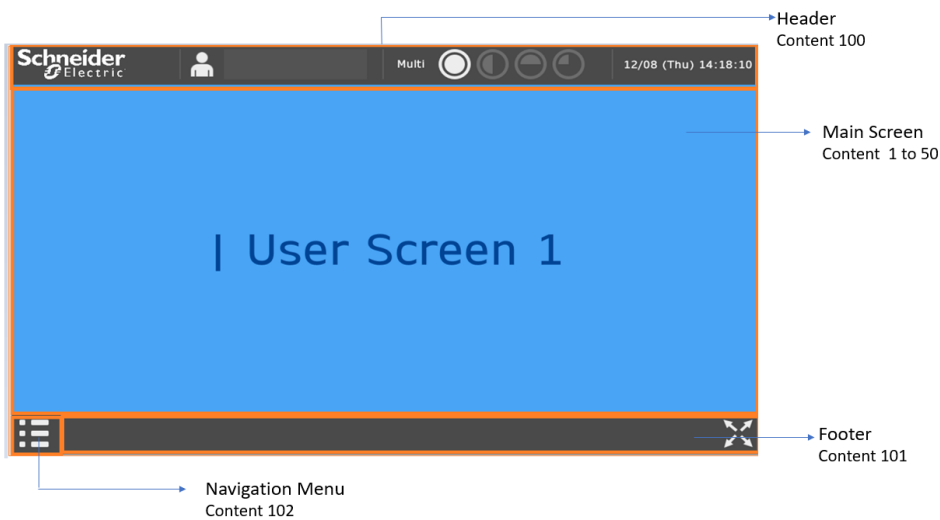
## Template Overview

This template displays Header, Footer and User Screens from which user can select required type of user screen display (single, two or four screen display), full view mode, Favorites, Navigation menu and so on.

## Project structure

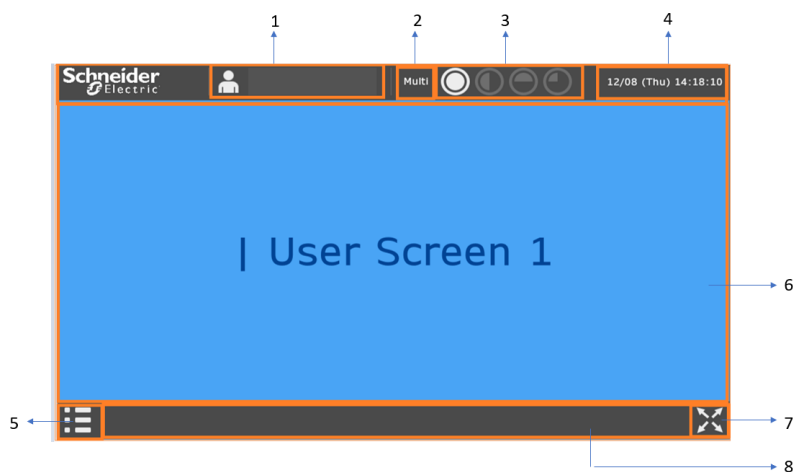
On MainFrame Screen, different contents are called and configured to display multiscreen, full view mode, Favorites, Navigation menu and so on.



Screen	
MainFrame ScreenID: 1	Main screen for multiple screen display
Contents	
UserScreen01 to 50 Content ID: 1 to 50	Different screens to display in main view
FileManager Content ID: 51	File Manager screen
HardwareConfiguration Content ID: 52	Hardware Configuration screen
Header Content ID:100	Header for Main screen
Footer Content ID:101	Footer for Main screen
NavigationMenu Content ID:102	Navigation menu for screens & Settings

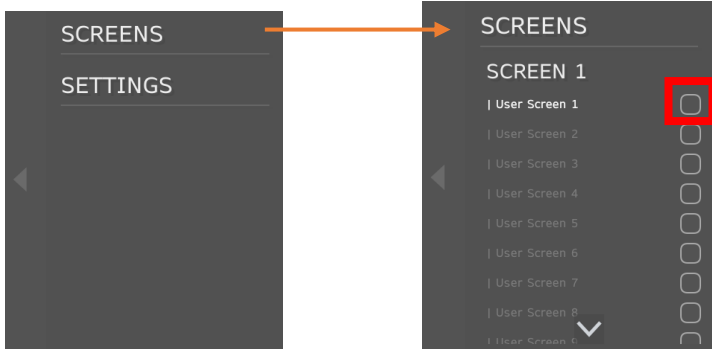
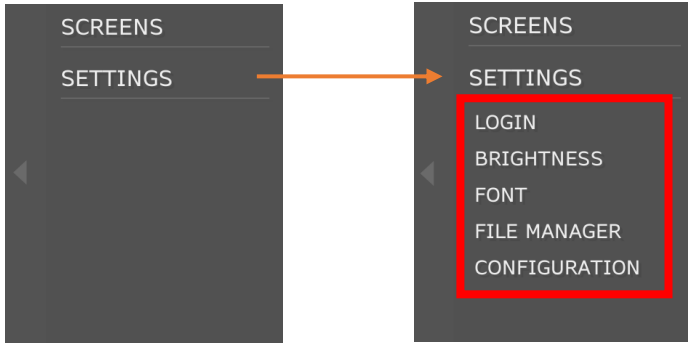


## Run Time Behavior

Runtime/Simulation of this template displays Header, Footer, Navigation Menu and User Screens from which user can select required type of user screen display (single, two or four screen display), full view mode, Favorites, Settings menu and so on.



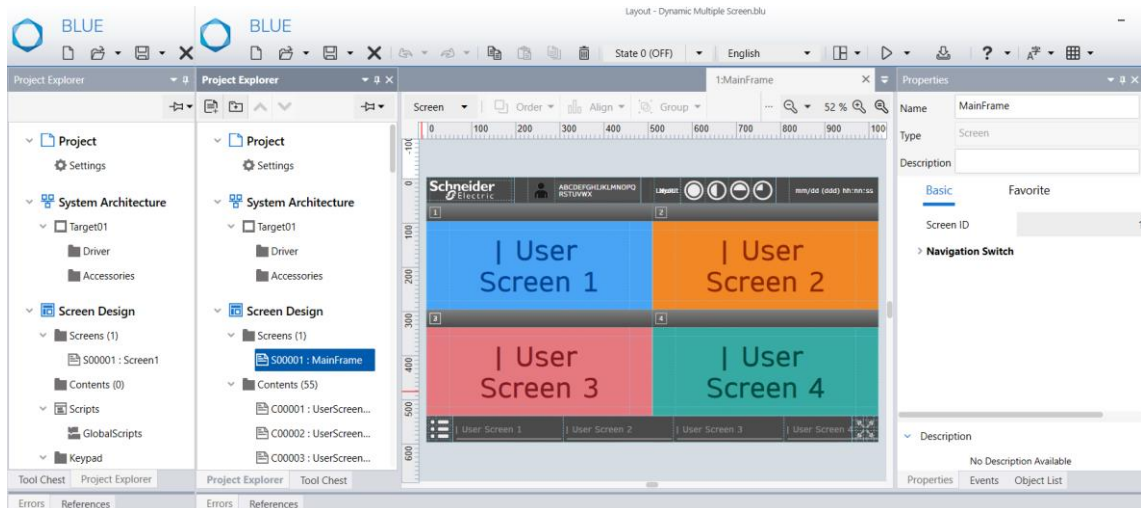
1	Click to open user login popup
2	Click to toggle between Multi and Layout
3	<p>Click on required icon to change screen view and layout view Multi: Single, 2 screen (Horizontal), 2 screen (Vertical), 4 screens</p>  <p>Layout: Position of navigation menu/full screen switch (Left/right), Header/Footer (Top/bottom)</p> 

4	Target Date & Time is displayed
5	<p>Click to enable/disable display of navigation menu. Navigation menu displays Screens and Settings.</p> <p><b>Screens:</b> Click SCREENS &gt; SCREEN (x) to open user screens. Click Check box to the right of user screens to add/remove it from favorites. You can add up to 10 screens as favorites.</p>  <p><b>Settings:</b> Click SETTINGS to open Settings Menu and configure as per your requirement.</p> 
6	User screens are displayed here depending on selected Multi screen in (2)
7	Click to toggle display between default view and full screen view
8	Screens added as favorite will be displayed here. Click desired screen to display in user screen (6).




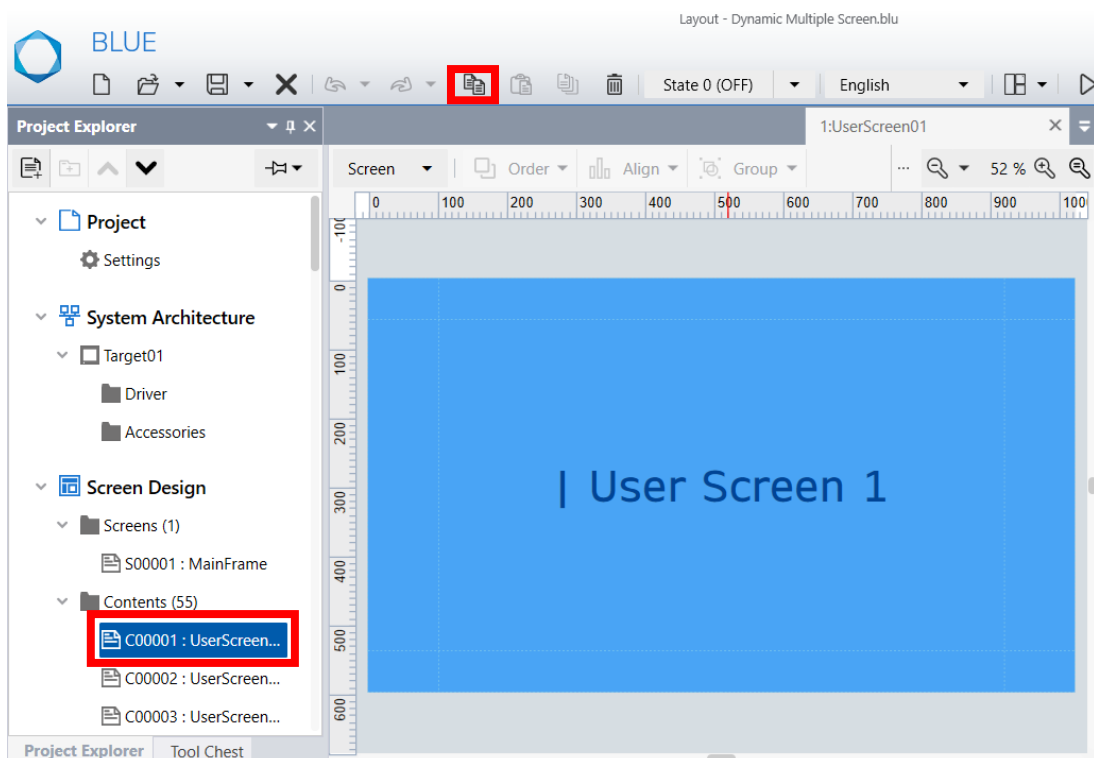
## How to copy the objects to your project file

1. Open your project file and downloaded project file simultaneously.




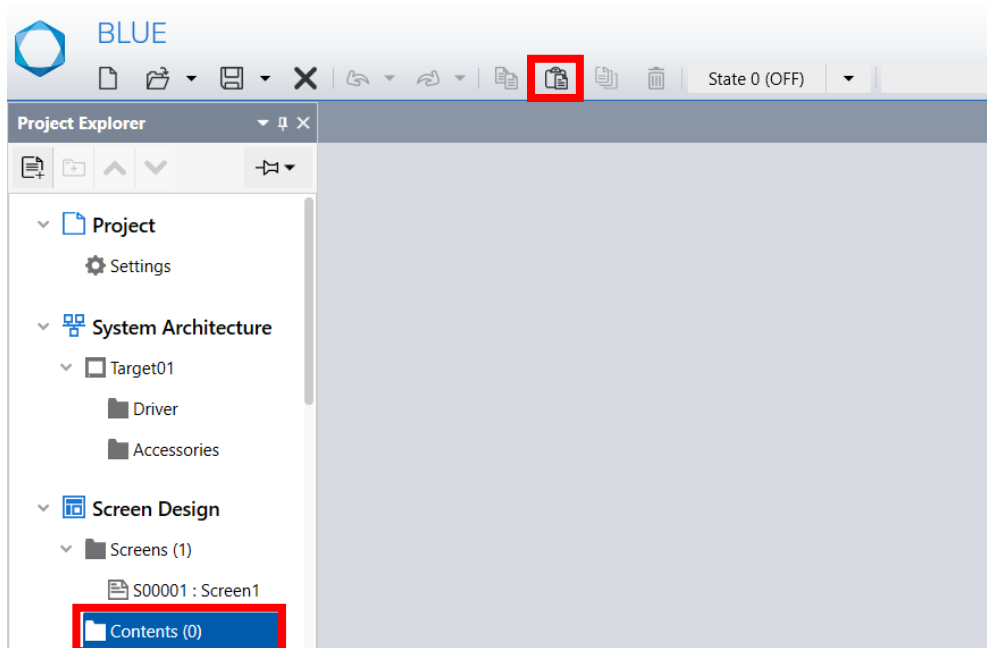
2. Open the downloaded project file.

Click the Content:C00001 from “Contents” and copy the content using  copy icon from the global Toolbar.



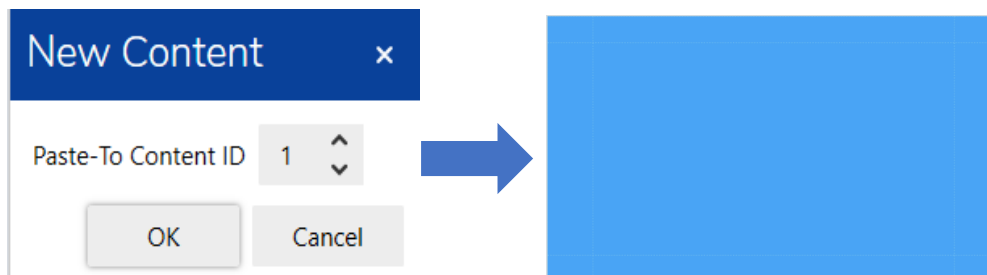
- Open your project file.

Click “Contents” and then click on the paste  icon from the global Toolbar.



- Select desired content ID and click “OK”.

Result: Copied content is successfully pasted in your project.

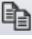


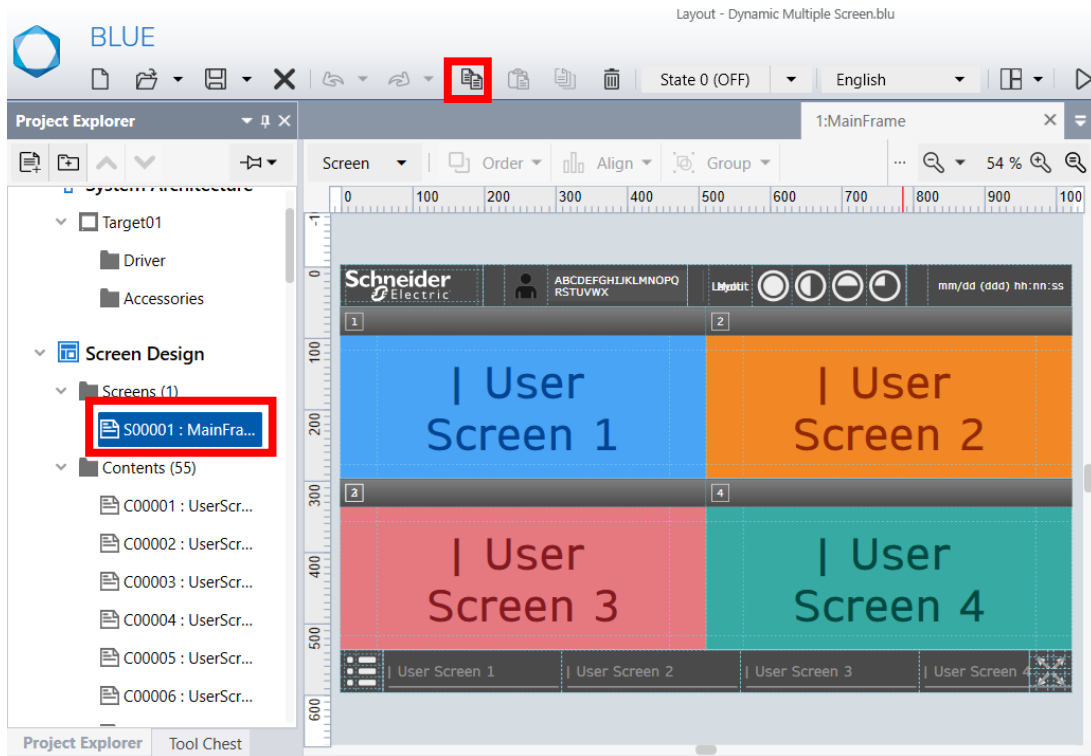
- Repeat step 2, 3 & 4 to copy all other contents.

Note:


- You can also copy all the contents at a time and paste in your project.
- You can replace user screens (Content 1 to 50) with required contents in your project by configuring content id in range of 1 to 50. Similarly, you can replace File manager (Content51) and Hardware configuration (content52) screen with your desired screen. For more details, refer [How to Configure Screens](#)
- Copy Header (Content 100), Footer (Content 101) and Navigation Menu (Content 102) content from the downloaded project.

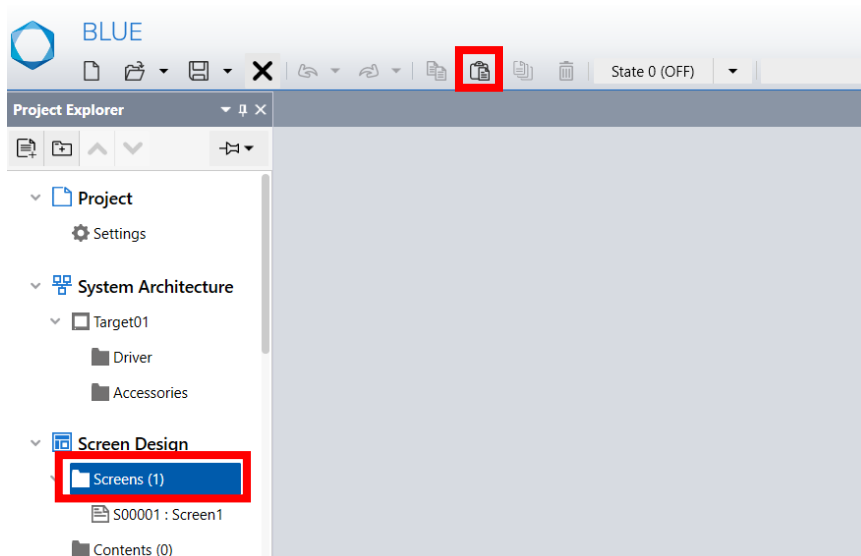
- Open the downloaded project file.

Click the Screen: S00001 from “Screens” and copy the screen using  copy icon from the global Toolbar.



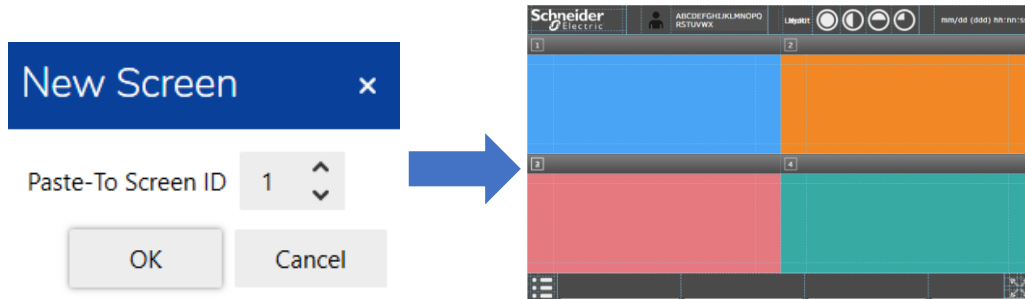
- Open your project file.

Click “Screens” and then click on the paste  icon from the global Toolbar.



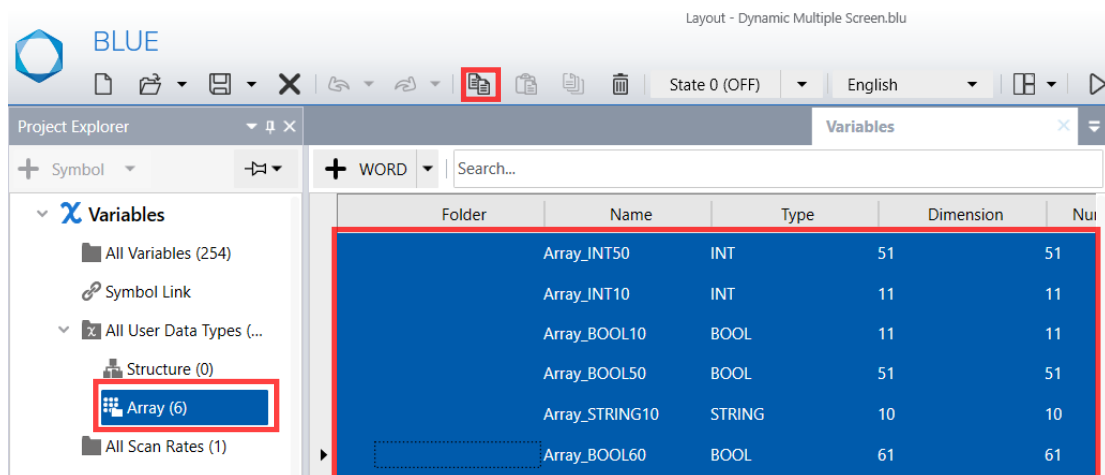
8. Select desired Screen ID and click “OK”.

Result: Copied screen is successfully pasted in your project.

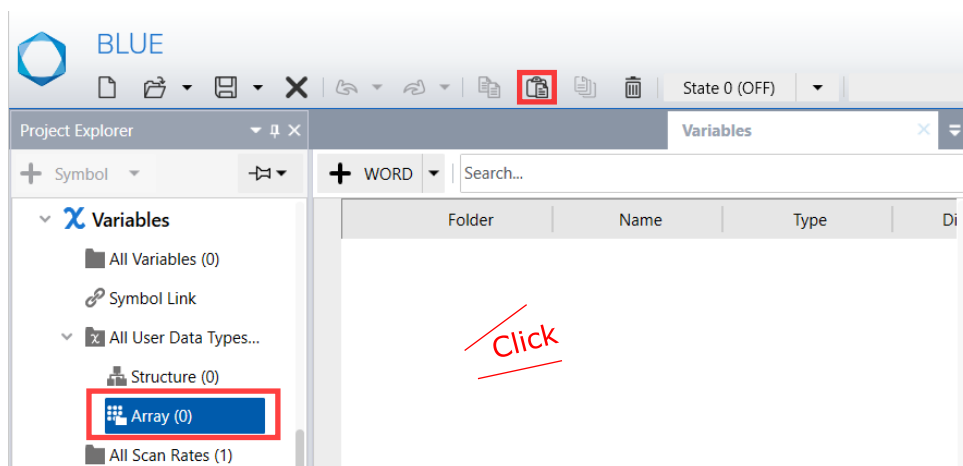


Note: The screen you copied will be the main screen for navigation between the copied contents. Make sure to modify the existing screen id/remove other screens in your project.

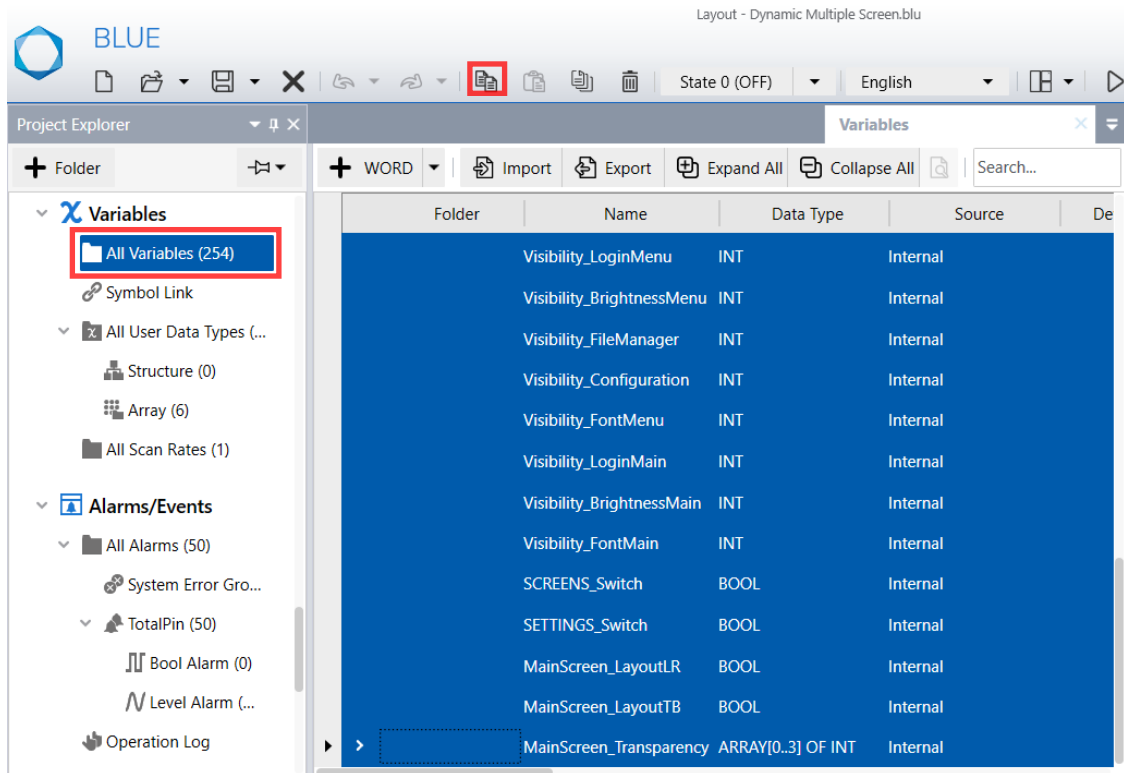
9. Open downloaded project file and select “Array”. Select the displayed Arrays and click the copy icon from global Toolbar.



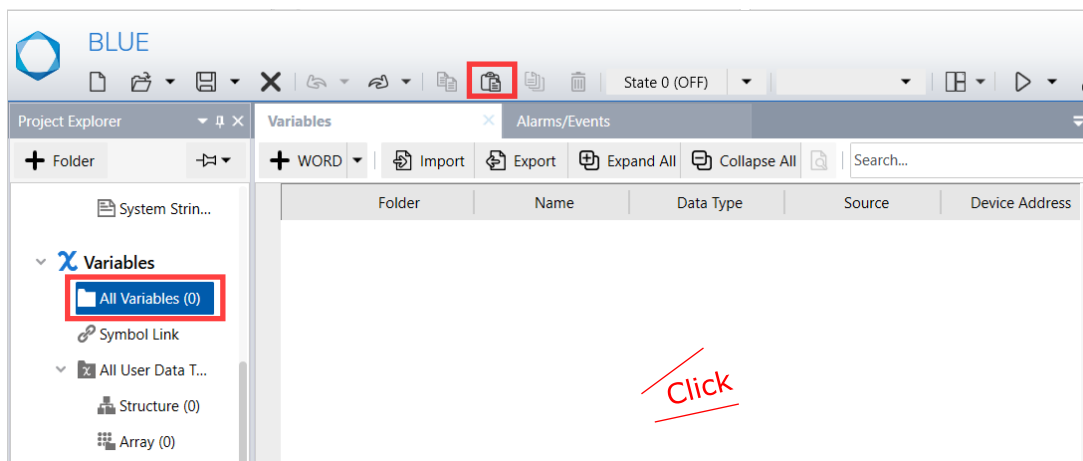
10. Open your project file and select “Array”. Click on the Array screen and click paste icon from the global Toolbar.



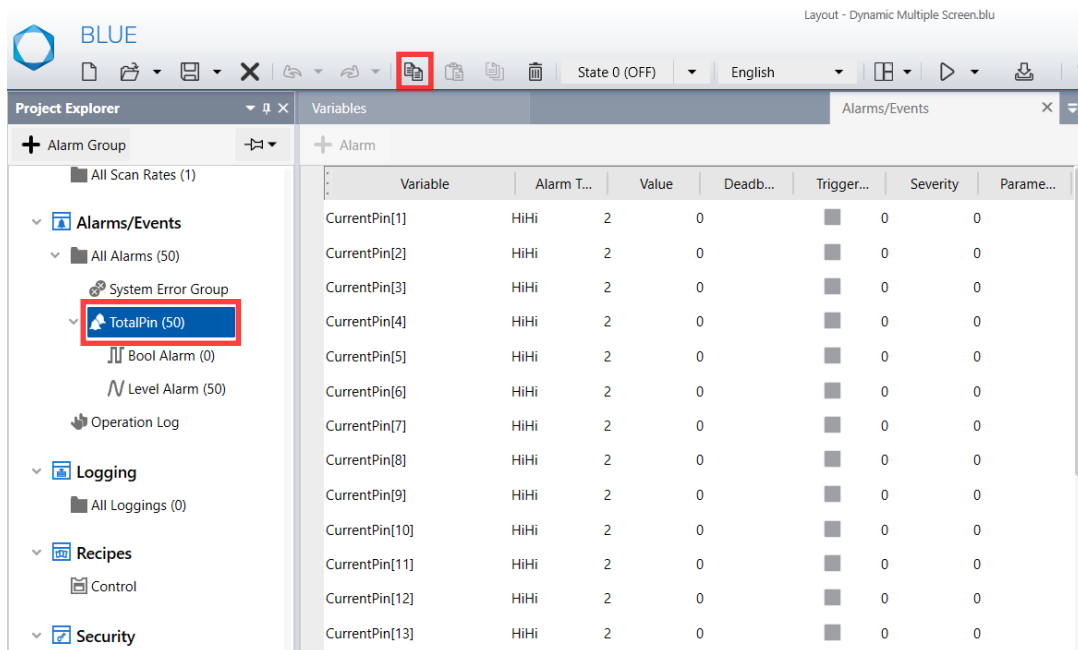
11. Open downloaded project file and select “All variables”. Select the displayed variables and click the copy icon from global Toolbar.



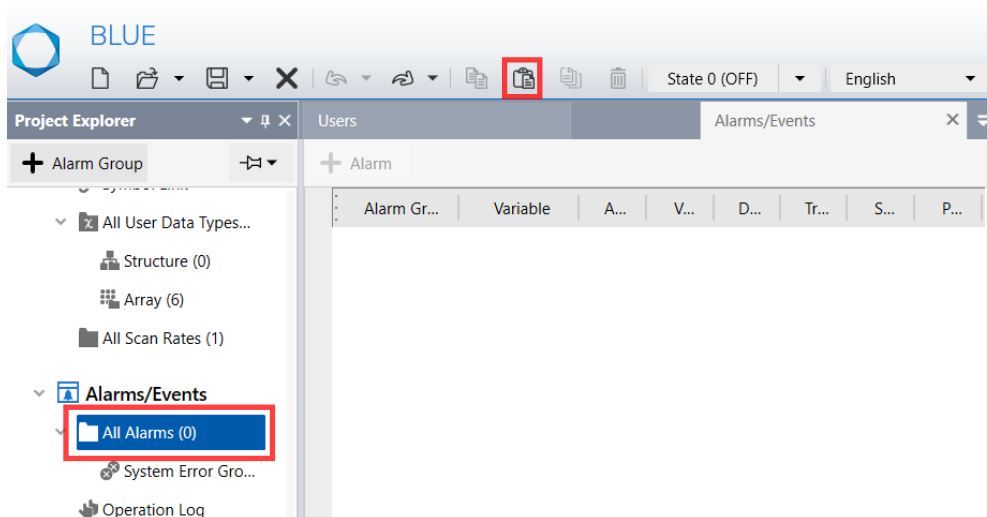
12. Open your project file and select “All variables”. Click on the variable screen and click paste icon from the global Toolbar.



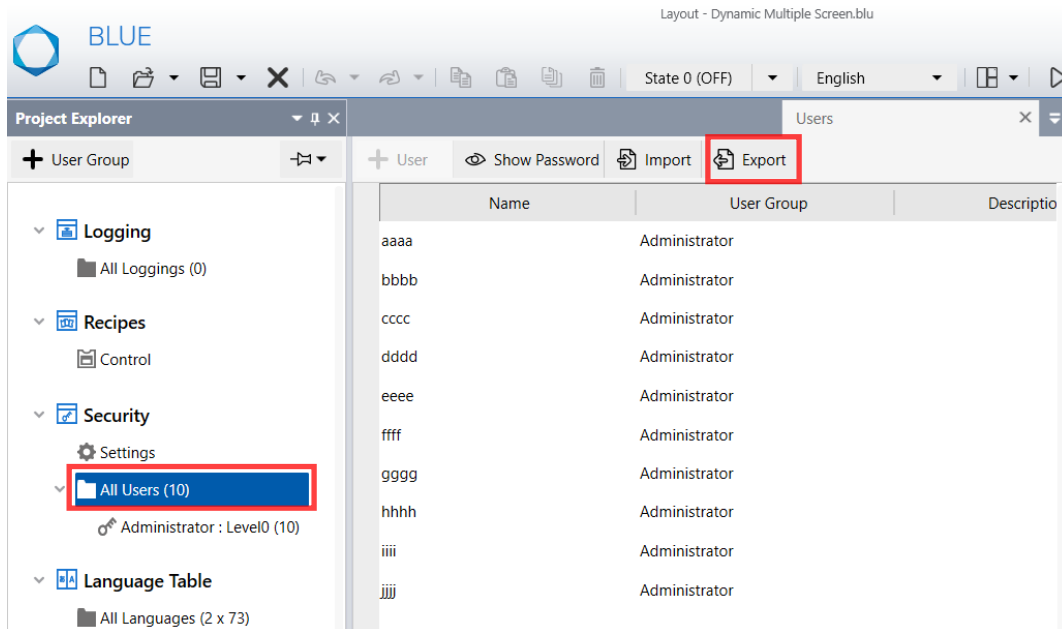
13. Open downloaded project file and select All Alarms > Total Pin. Click the copy icon from global Toolbar.



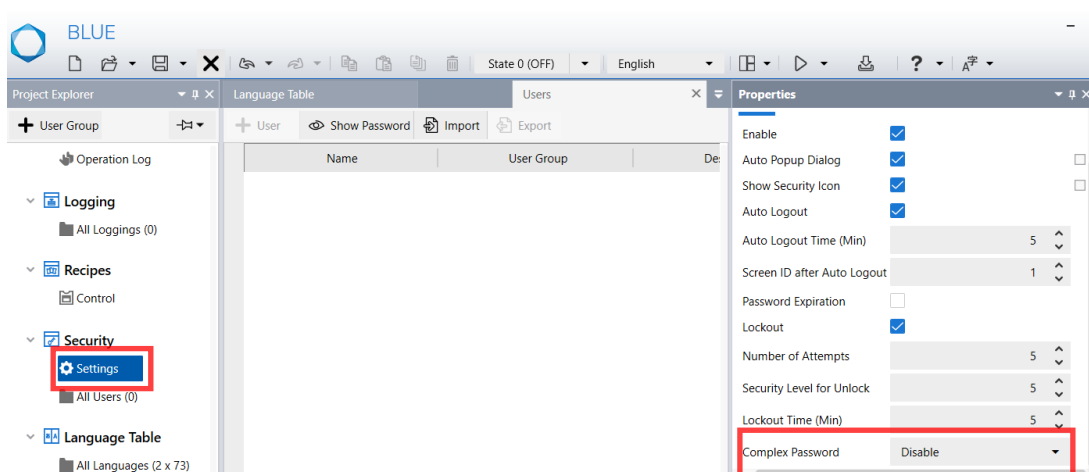
14. Open your project file and select "All Alarms". Click on the paste icon from the global Toolbar.



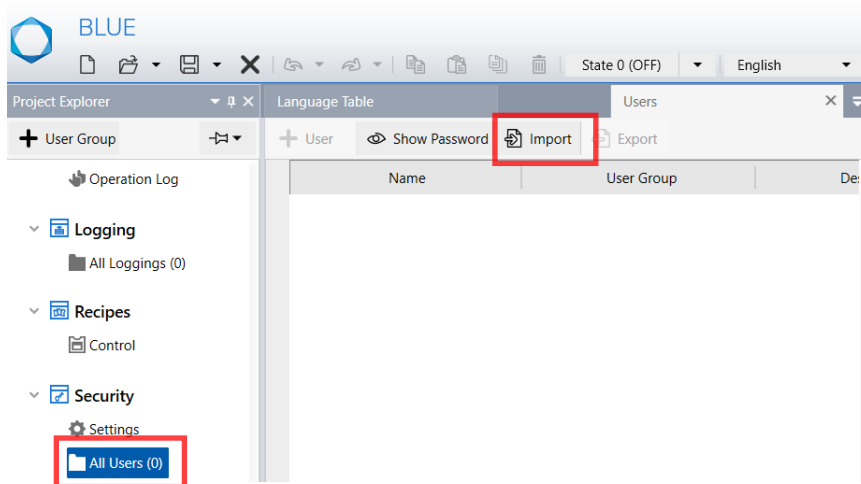
15. Open the downloaded project file, select “All Users”. Click the export icon from the local Toolbar and save in desired path.



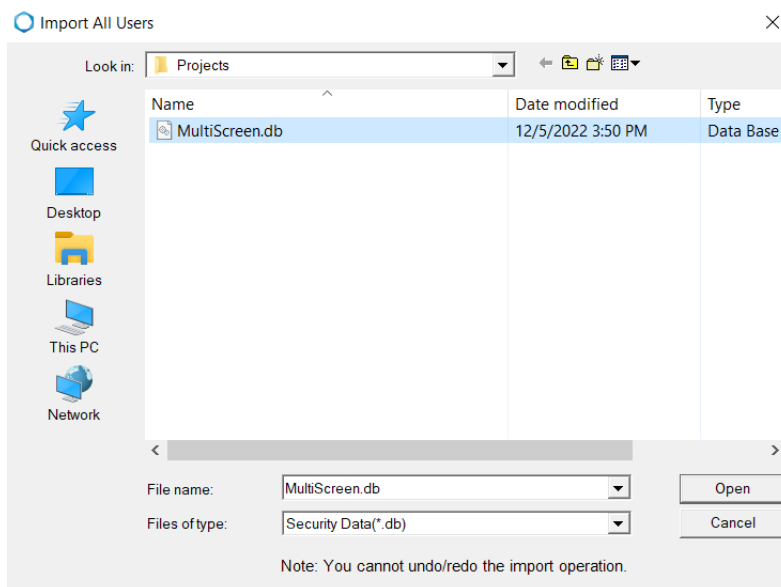
16. Open your project file, select Security > Settings. In Properties tab, Disable Complex password.



17. select "All Users". Click the import icon from the local Toolbar.



18. Select the path (where it is exported), File name, File Type and Click Open.

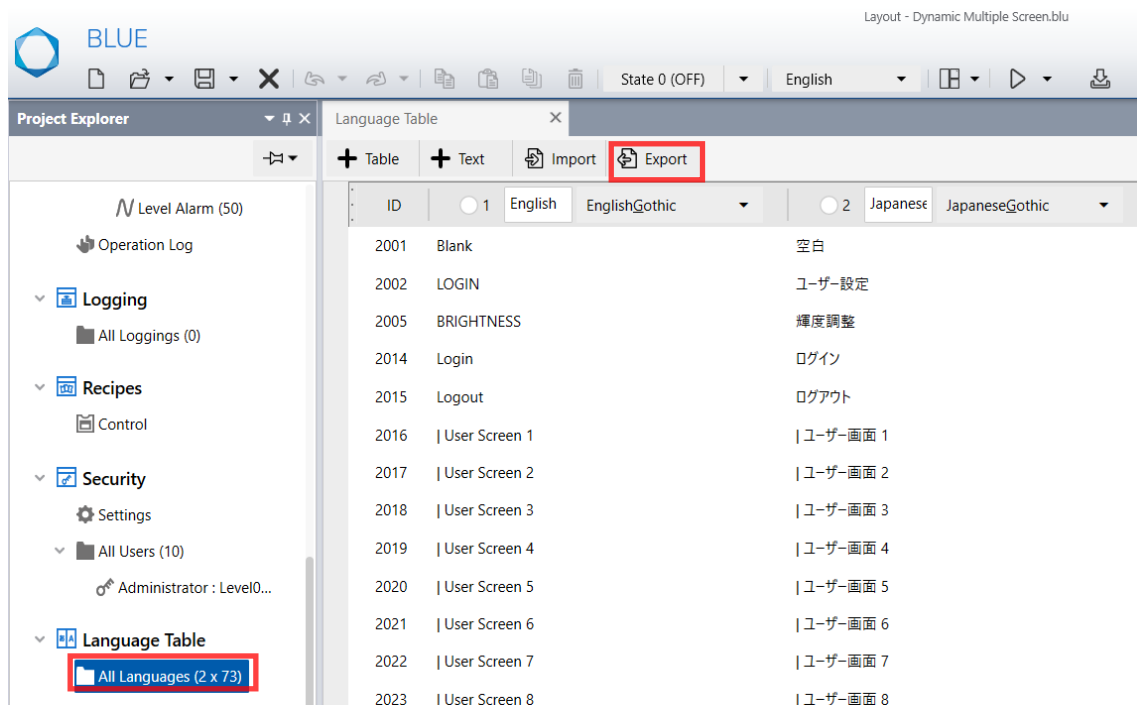


Result: All Users will be imported to your project.

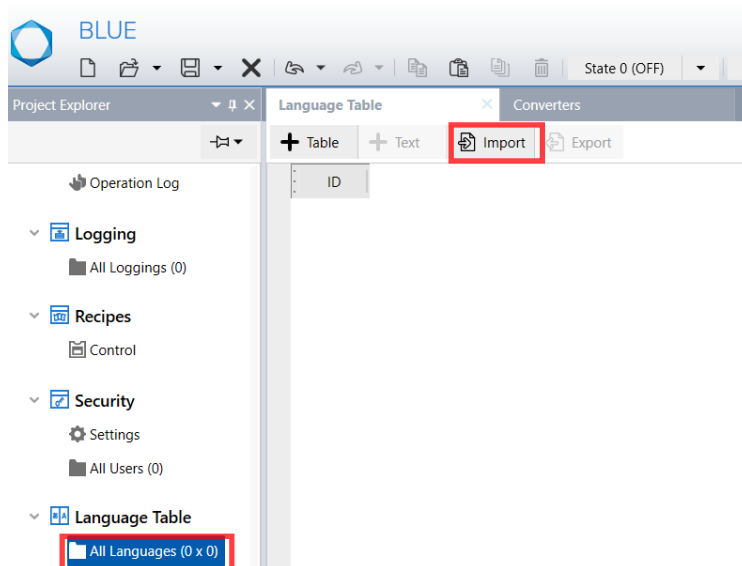
Note: You can also use your own Users settings. For more details, refer [How to Configure User Management](#).



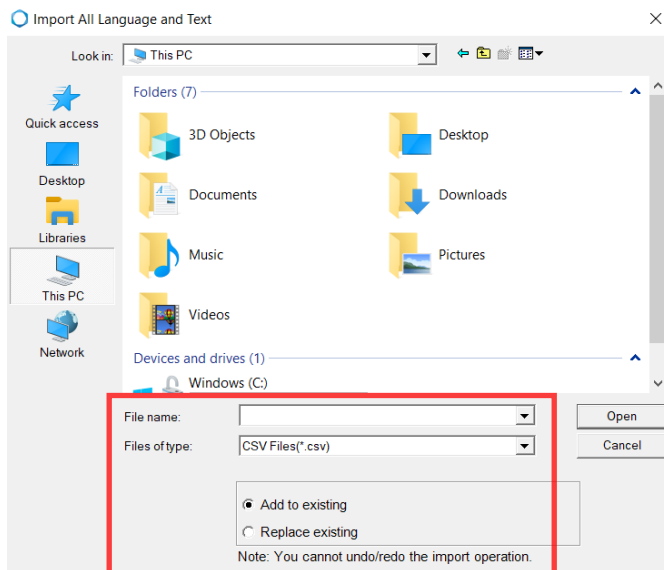
19. Open the downloaded project file, select “All Languages”. Click the export icon from the local Toolbar and save in desired path.



20. Open your project file, select “All Languages”. Click the import icon from the local Toolbar.



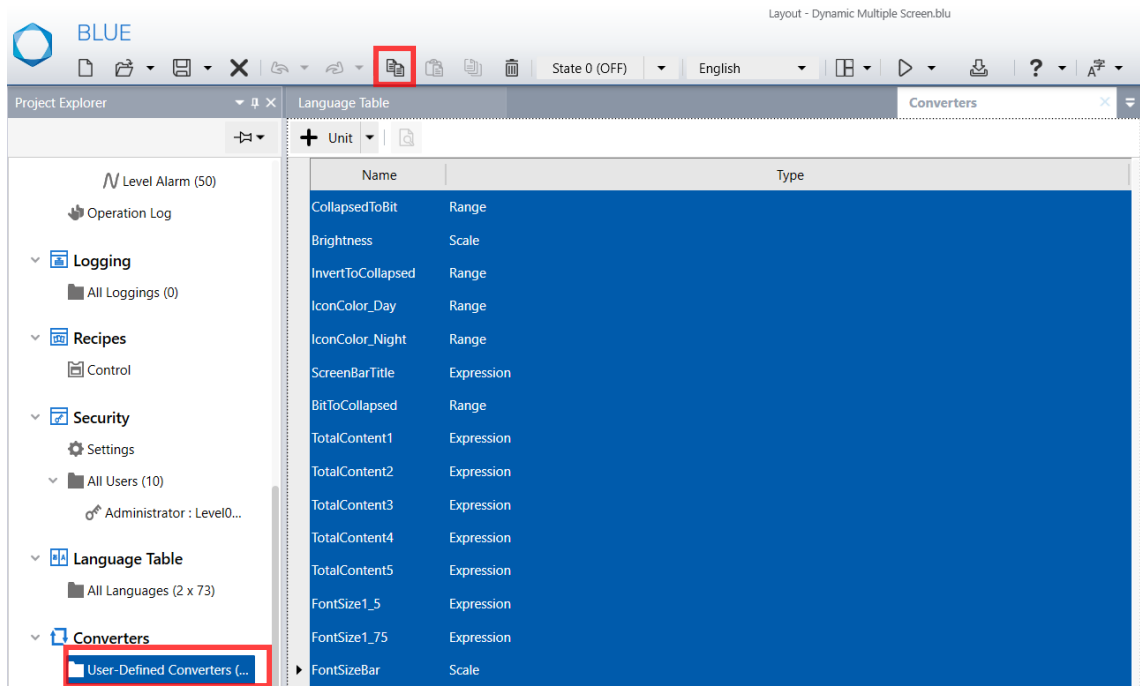
21. Select the path (where it is exported), File name, File Type and Add/Replace existing from the dialog and Click Open.



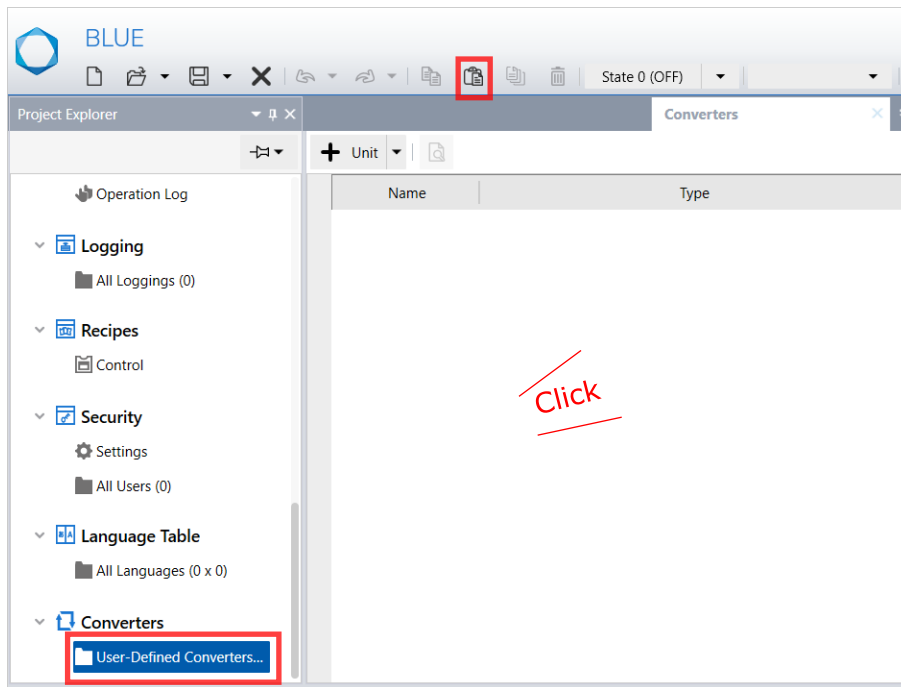
Result: All language text will be imported to your project.

Note: You can also use your desired language text. For more details, refer [How to Configure Language Table](#).

22. Open the downloaded project file, select “User-Defined Converters”. Select the displayed converter and click the copy icon from the global Toolbar.



23. Open your project file, select “User-Defined Converters”. Click on the Converter screen and click paste icon from the global Toolbar.



## How to Configure Screens

To replace any of the existing user screen in template with your desired screen, select your desired screen and configure the content id same as downloaded project.

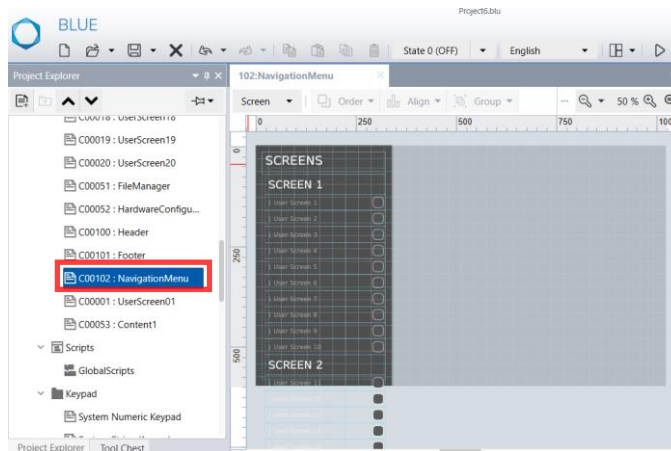
Example: To replace user screen 1, Configure your desired content id as 1.

Note: If you are replacing any of the content, do not copy that content from downloaded project to your project.

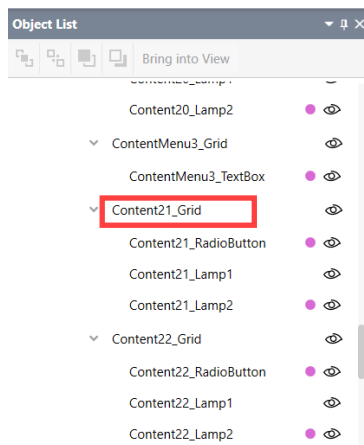
To remove the unused screens in your project (Example: if only 20 screens are used in your project), follow below steps:

1. Add/Copy only the required user screens (20 contents)

2. Select Navigation menu content.

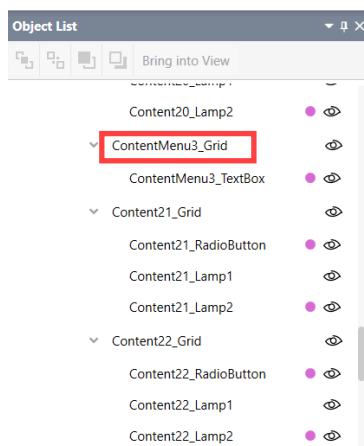


3. In Object List, select Content(x)\_Grid (Example: Content21\_Grid) and click delete icon from global toolbar.



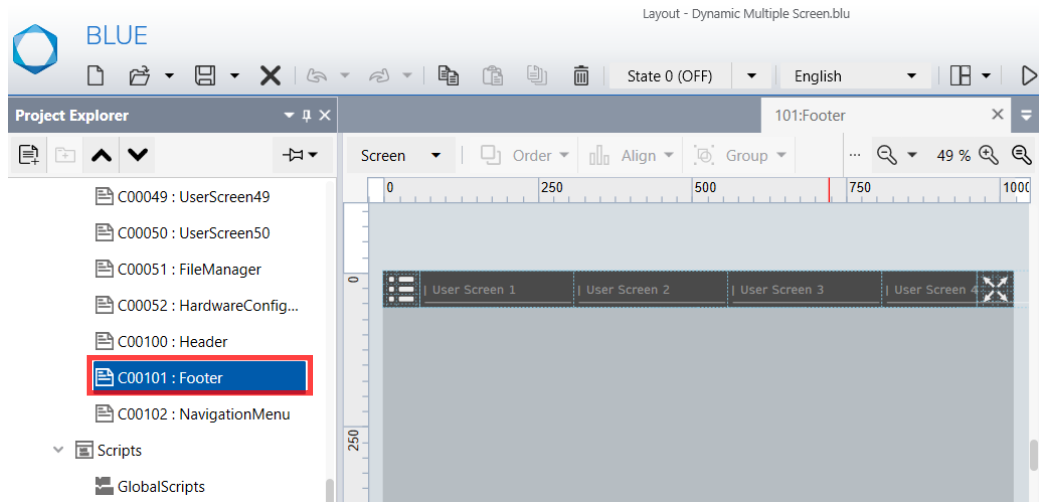
4. Repeat above step for all unused screens (21 to 50)

5. In Object List, select ContentMenu(x)\_Grid (Example: ContentMenu3\_Grid) and click delete icon from global toolbar.

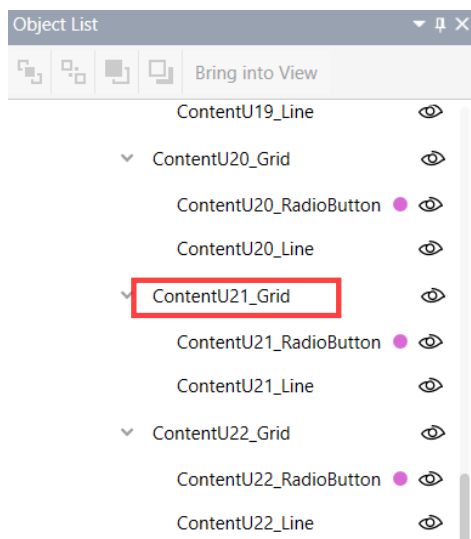


6. Repeat above step for all unused content menu (Screen4, screen5)

7. Select Footer content.



8. In Object List, select ContentU(x)\_Grid (ContentU21\_Grid) and click delete icon from global toolbar.

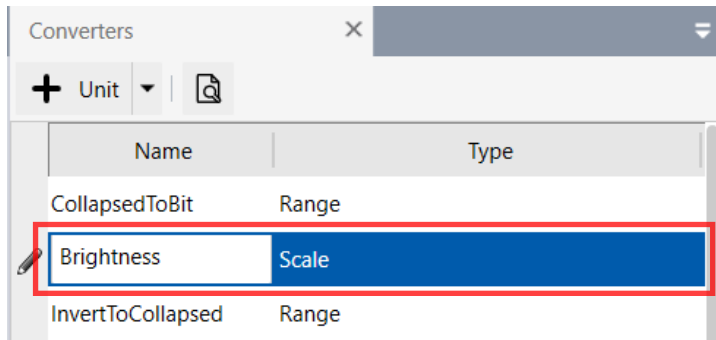


9. Repeat above step for all unused content Grid (21 to 50)

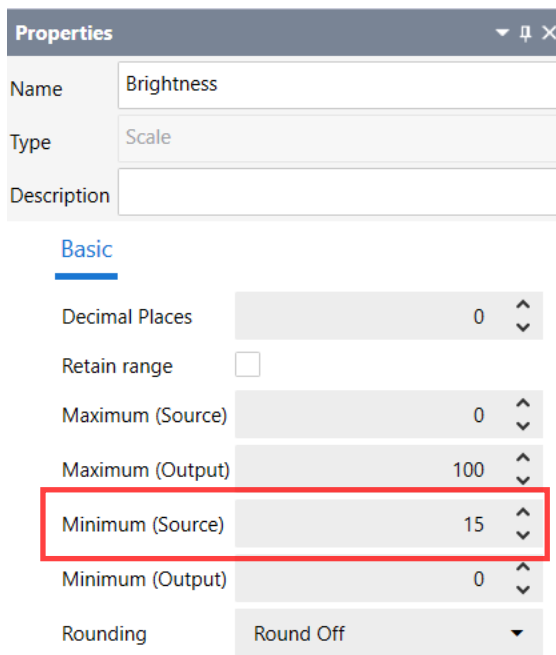
## Configuring Brightness

When the target is changed to SP5000series, configure Brightness converter as below:

1. Open your project file, select “User-Defined Converters”. Select the Brightness converter.



2. In Properties window, select Minimum (source) and update the value from 15 to 100.

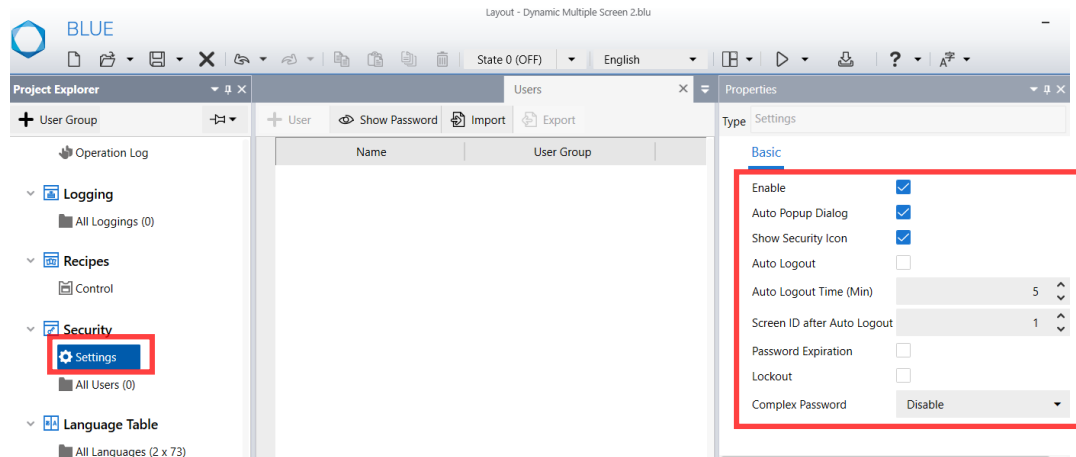


Note: This configuration is mandatory when changing the target to SP5000, else the converter scaling is not matched.

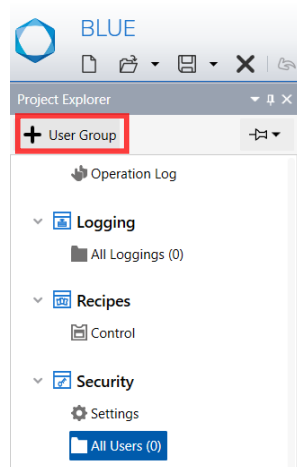
## How to Configure User Management

To add required users in your project, follow below steps:

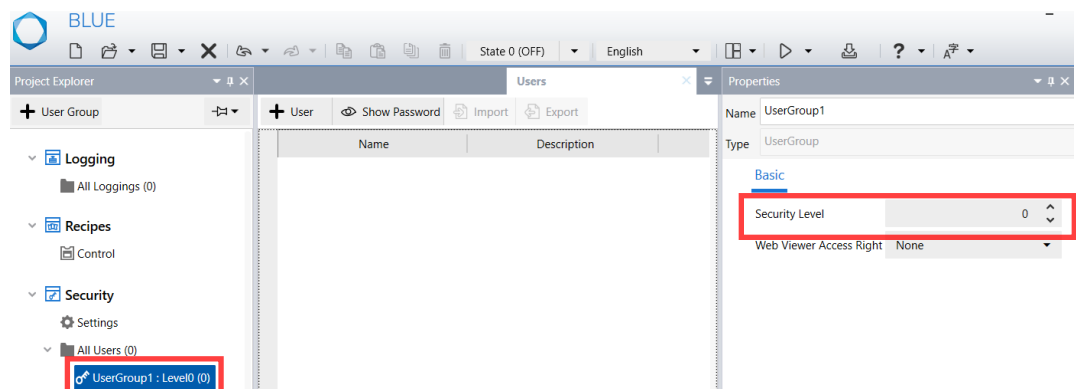
1. Select Security > Settings. In Properties tab, configure complex Password & other properties as per your requirement.



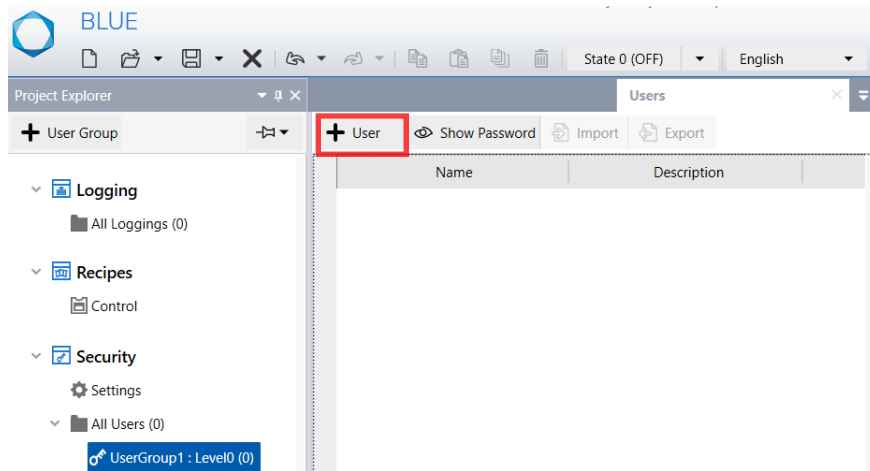
2. Select Security > All Users. Click Add User Group icon.



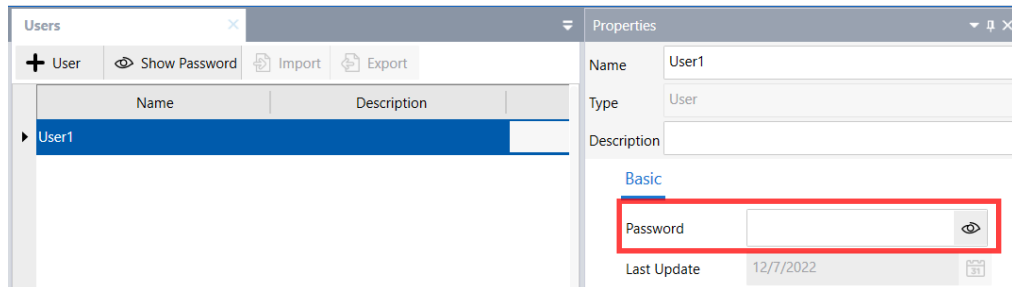
3. Select new user group added. In Properties tab, configure security Level.



4. Click Add user icon in the editor local toolbar.



5. Select the user. In properties tab, configure name and password as required.



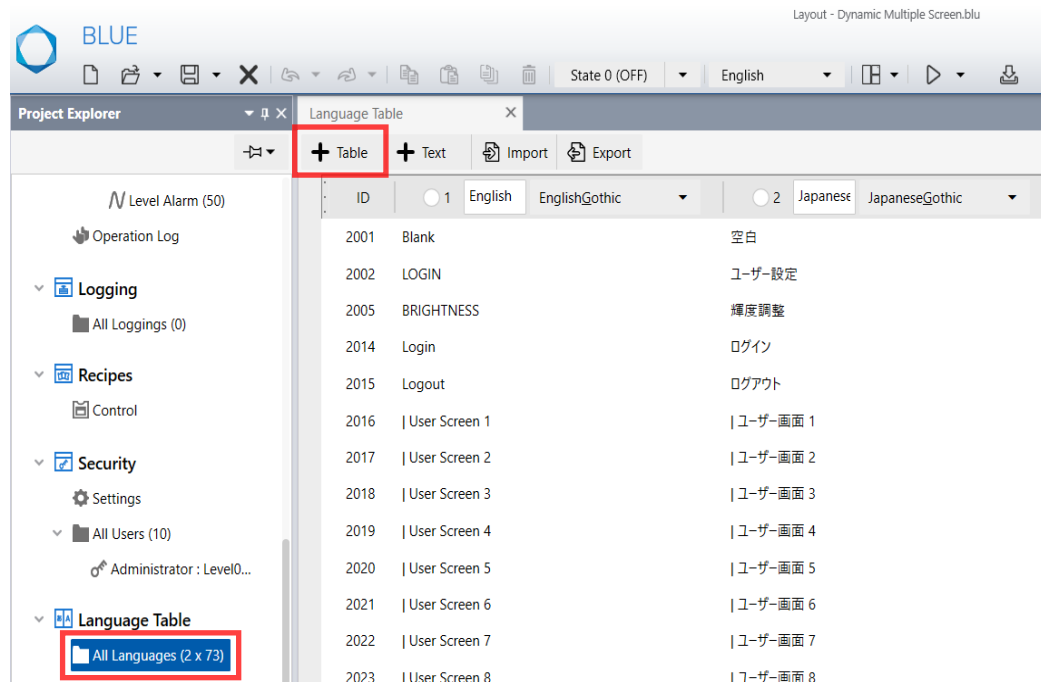
6. Repeat step 2&3 to add user group and step 4, 5 to add new users, as per your requirement.



## How to Configure Language Table

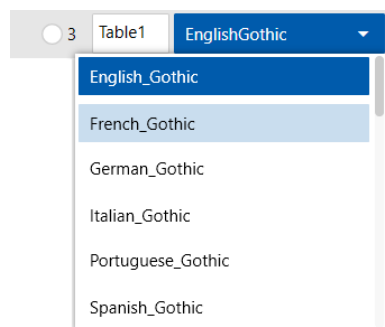
To add any new languages for the existing text, follow below steps:

1. Select “All Languages” and in grid editor click Add Table icon in local toolbar.

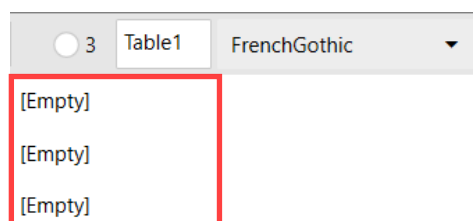


Result: New language table will be added

2. Click on drop-down of newly added table and select your desired language.

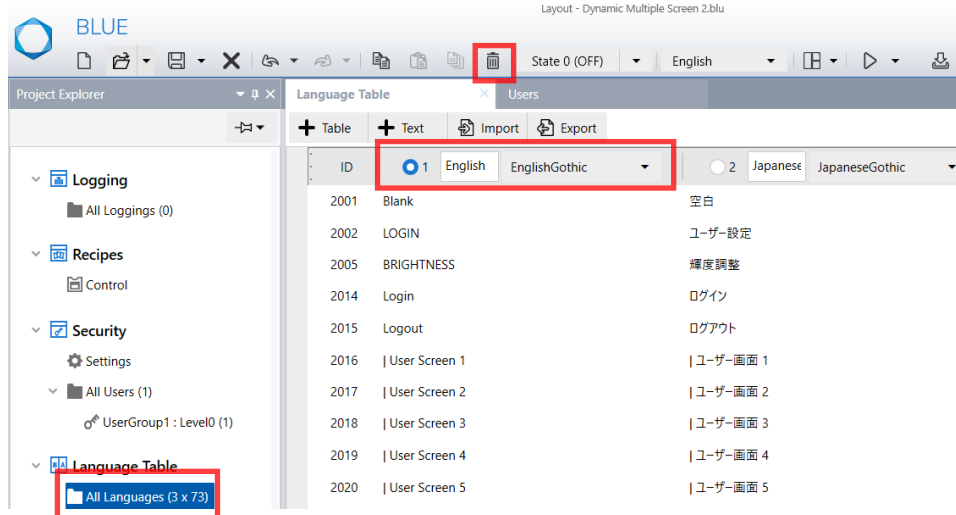


3. Select Language text in Grid editor. Edit the value as per your requirement.

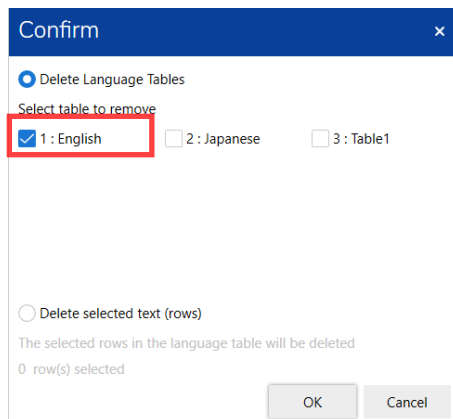


To delete any existing language table,

1. Select "All Languages" then select the table which you want to delete.



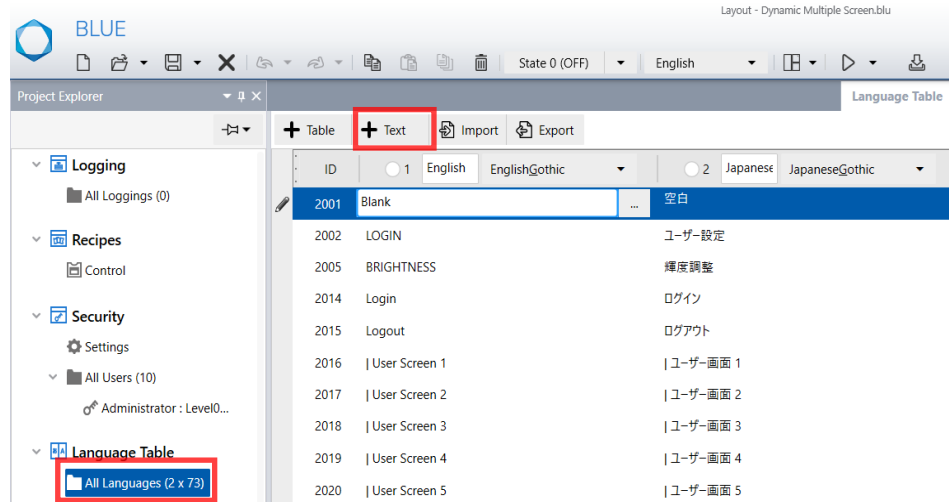
2. Click on delete icon in global toolbar.
3. Select the language to be deleted in popup and click ok.



Result: selected language table will be deleted.

To add any language text, follow below steps:

1. Select “All Languages” and in grid editor, click Add Text icon in local toolbar.



Result: New text will be added in the editor

2. Select the text and edit the value as per your requirement for all languages.

