

**Pro-face**  
for the best interface

# New IPC PS5000 Series

What do you need for your machine?



Brand new PS Series!

# Powerful Solution

PS5000 specifications are best class in industry and is flexibility to connect to various controllers.

A change to more powerful and flexible manufacturing with New PS.

# What do you need for your machine?

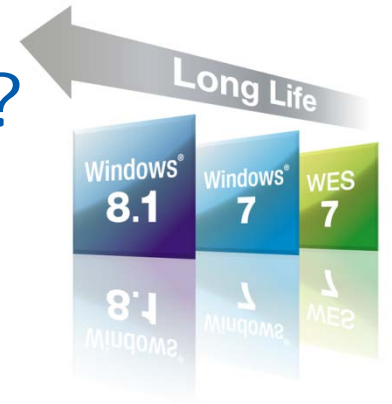
Performance?



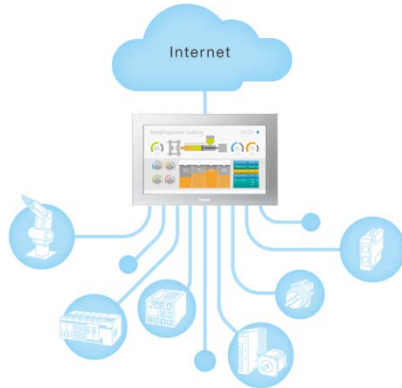
Design?



Reliability?



Connectivity?



Maintenance?



Application with Powerful Solution

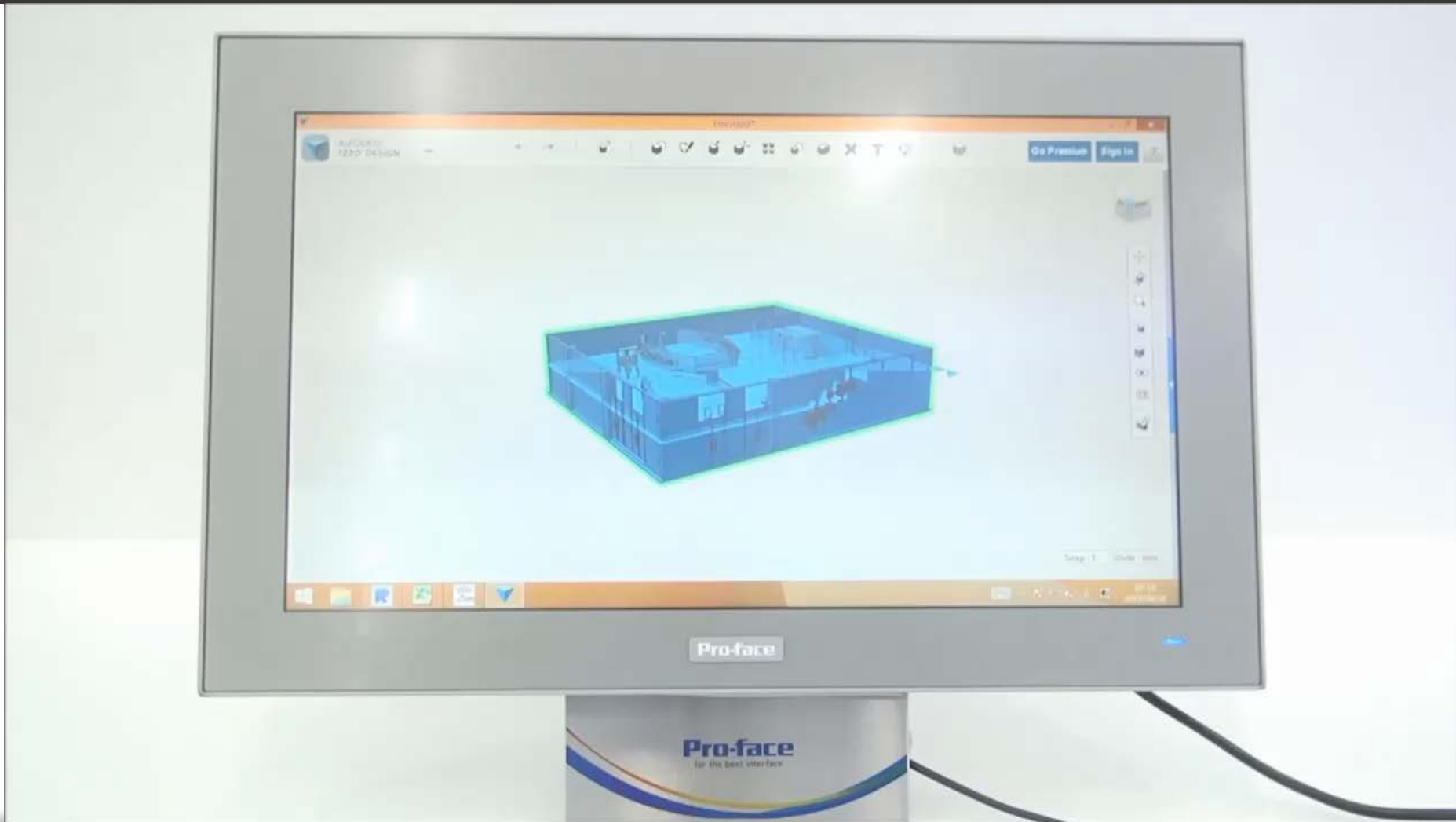
▶ [Lineup](#)

▶ [Specification](#)

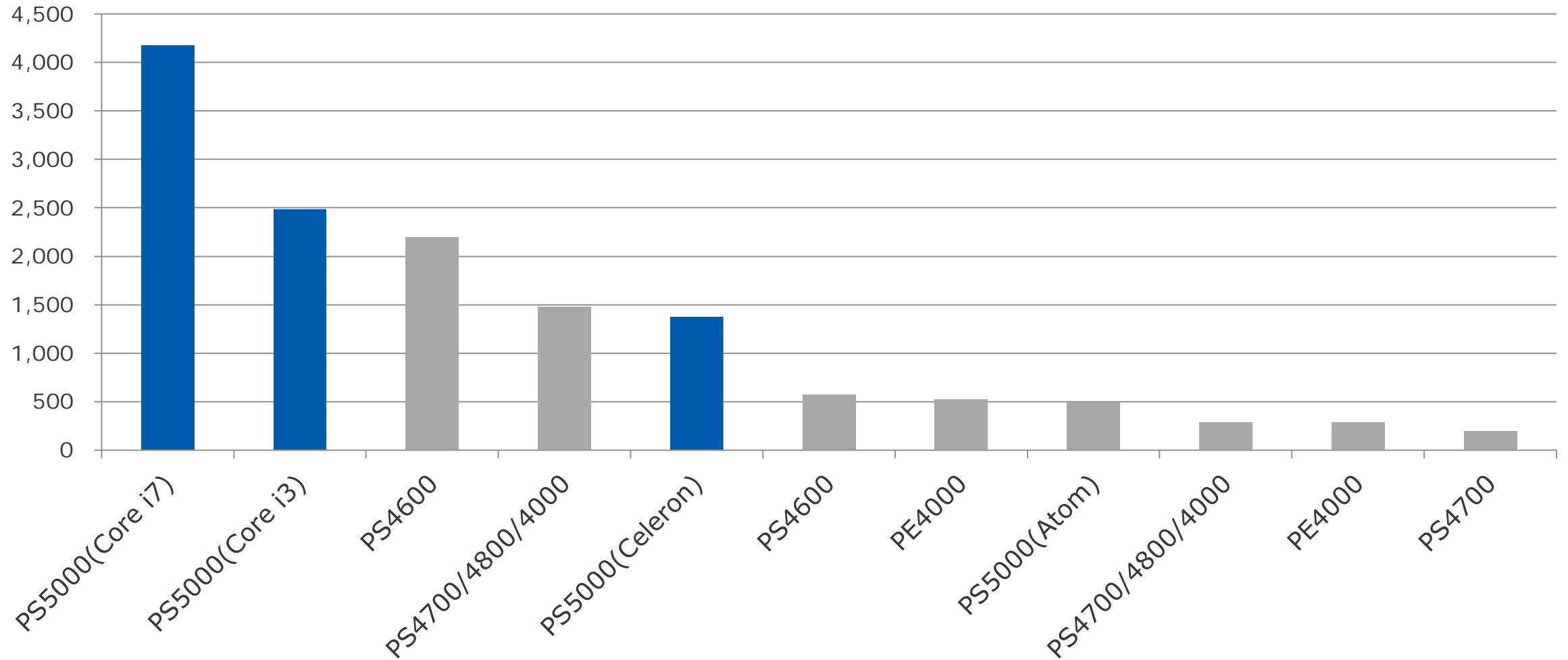
▶ [Interface\(3D\)](#)

▶ [Configurator](#)

# Smoothly operation of heavy contents



# CPU benchmark



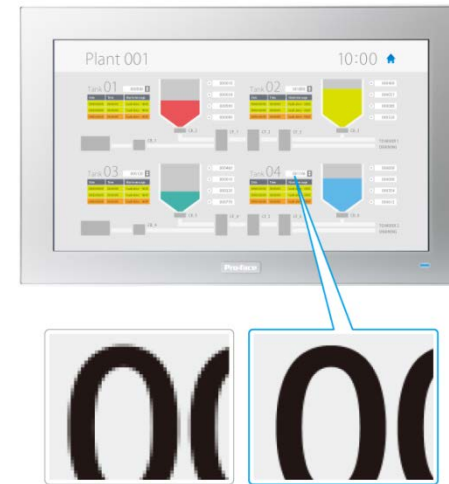
# Performance

Excellent performance in a comfortable package



A generous helping of the latest technology, even for an industrial computer, gives this industrial PC a surprising edge performance-wise.

High-visibility, high-resolution display

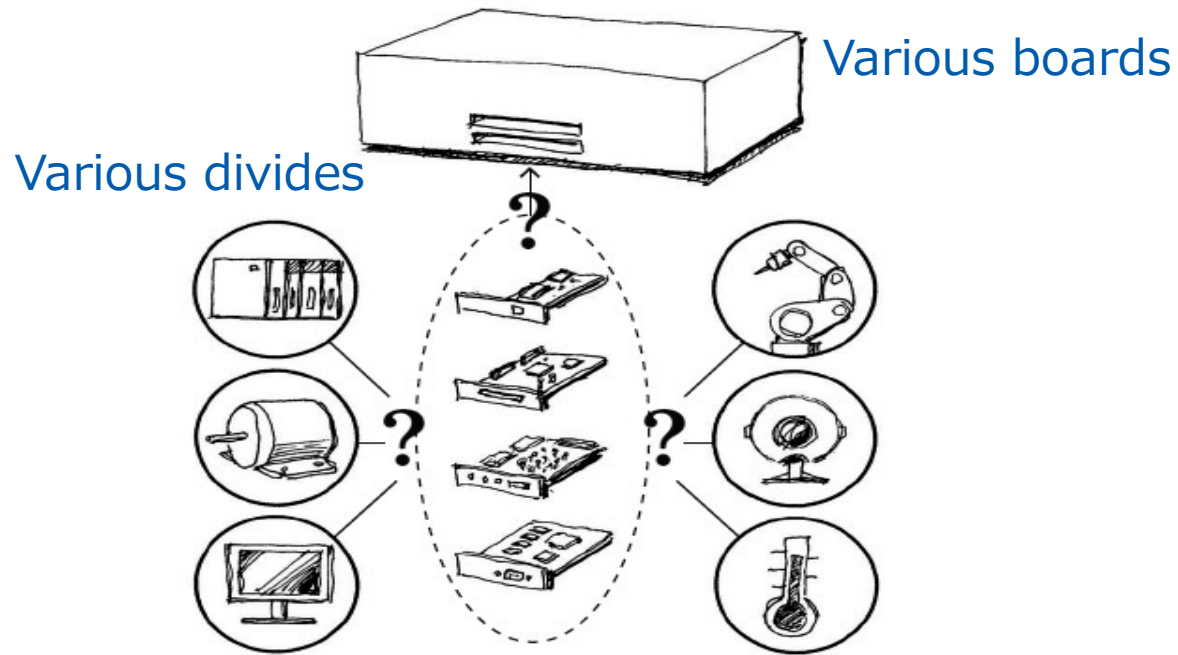


Even when used as an industrial panel computer to show a lot of information from monitoring applications all over the plant, the display shows numbers, letters, inspection images, and other information in a clear and legible manner.

# A variety of options to fit the required interface

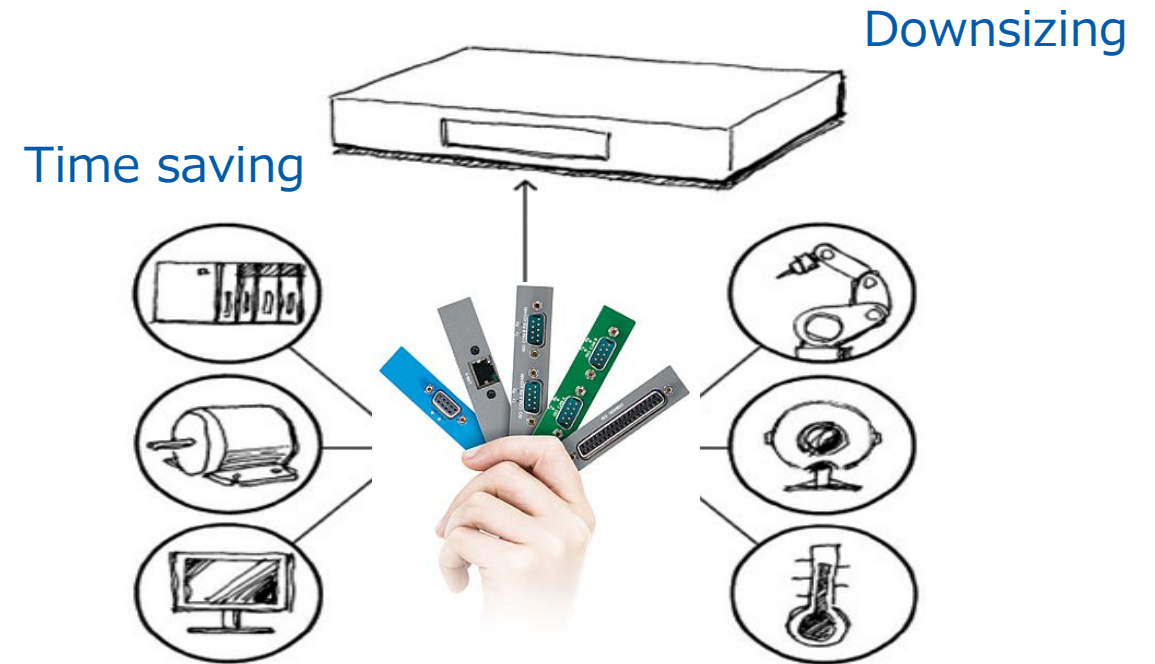
## Before

It takes time for the choice and inspection for board.



## After

No more time for choice and inspection. No more slot for expansion.


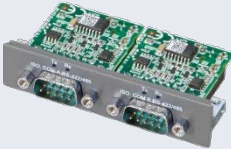




No more slot for expansion.





# Performance

Items	Description
Ethernet 	<ul style="list-style-type: none"><li>• 2x GbE LAN with PoE *</li><li>• GbE LAN (IEEE 1588)</li></ul>
USB	<ul style="list-style-type: none"><li>• 2x USB3.0 *</li></ul>
NVRAM	<ul style="list-style-type: none"><li>• NVRAM 2MB</li></ul>
COM 	<ul style="list-style-type: none"><li>• 2x RS-422/485 (with Isolation)</li><li>• 2x RS-232 (with Isolation)</li><li>• 4x RS-422/485</li><li>• 4x RS232C</li></ul>
Audio	<ul style="list-style-type: none"><li>• Line IN, Line OUT, Mic IN *</li></ul>
Cellular	<ul style="list-style-type: none"><li>• EDGE/GPRS/GSM, 1 x internal cable, 1x Antenna</li></ul>
Fieldbus 	<ul style="list-style-type: none"><li>• Profibus DP Master with NVRAM</li><li>• CANopen</li></ul>
Digital I/O 	<ul style="list-style-type: none"><li>• 16 DI / 8 DO</li></ul>

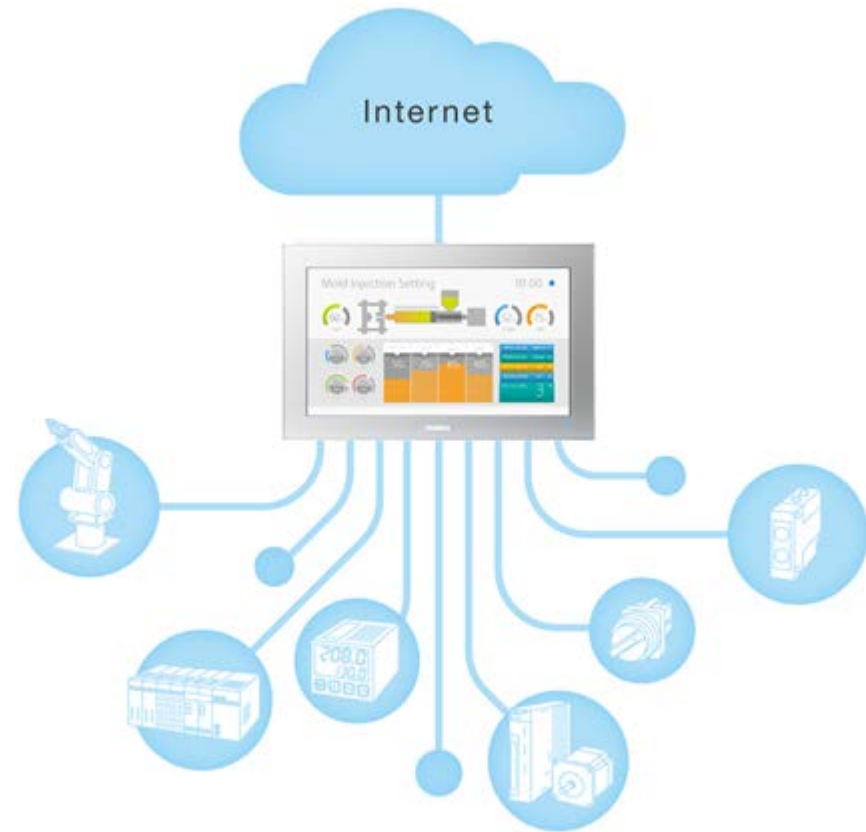
\*Modular Type only

# Connectivity

## Wide variety of drivers for program-less connections to control equipment

An extensive array of drivers is available for freely connecting to any manufacturer's control equipment. In order to ensure usability of a customer's control equipment attached to a device, the available drivers allow communication and control without driver development and with no programming necessary.

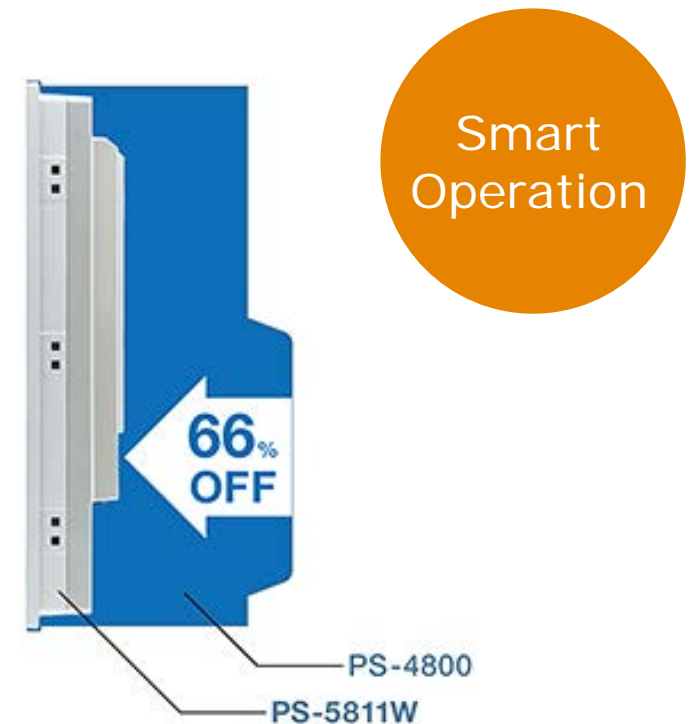
Easily connect any control equipment to the internet, bringing it up-to-date via the Internet of Things (IoT).



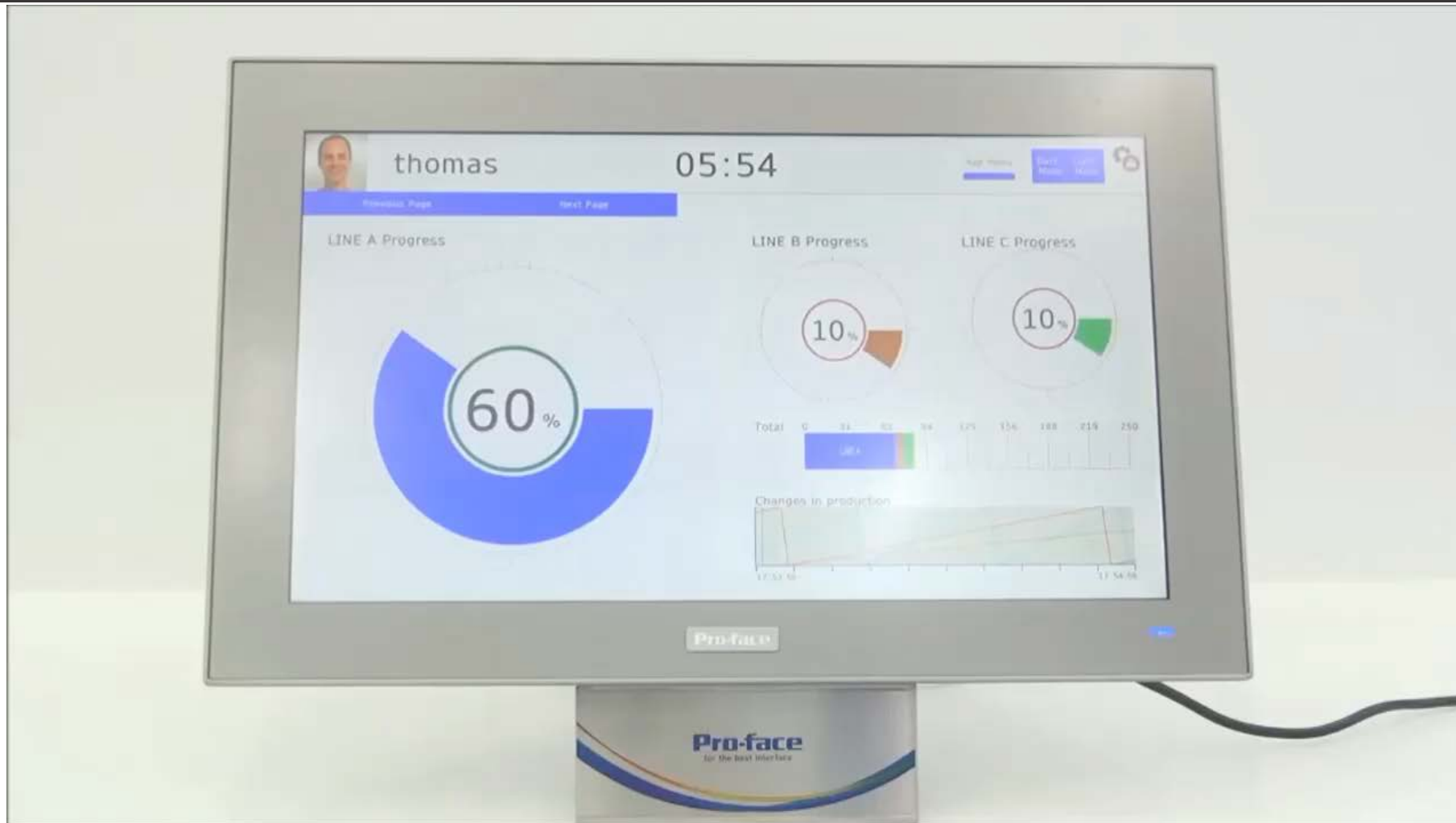
# Drastically slimmer profile with less wasted space

By paying close attention to shaving off every possible millimeter, we have achieved an ultra-thin design only about 30% as deep as conventional products.

With a thinner operation panel to deal with when designing equipment, customers can greatly reduce costs associated with purchasing operation panels.



# Intuitively operable multi-touch display



# Design

High-quality glass face offering ease of use and visibility



The display is made of low-reflectivity glass. And with less glare and higher contrast, the display boasts improved visibility in any setting.

Simple, high-level enclosure design to match industrial applications



Being an industrial PC, this product adopts a minimalist design that does away with wasteful components.

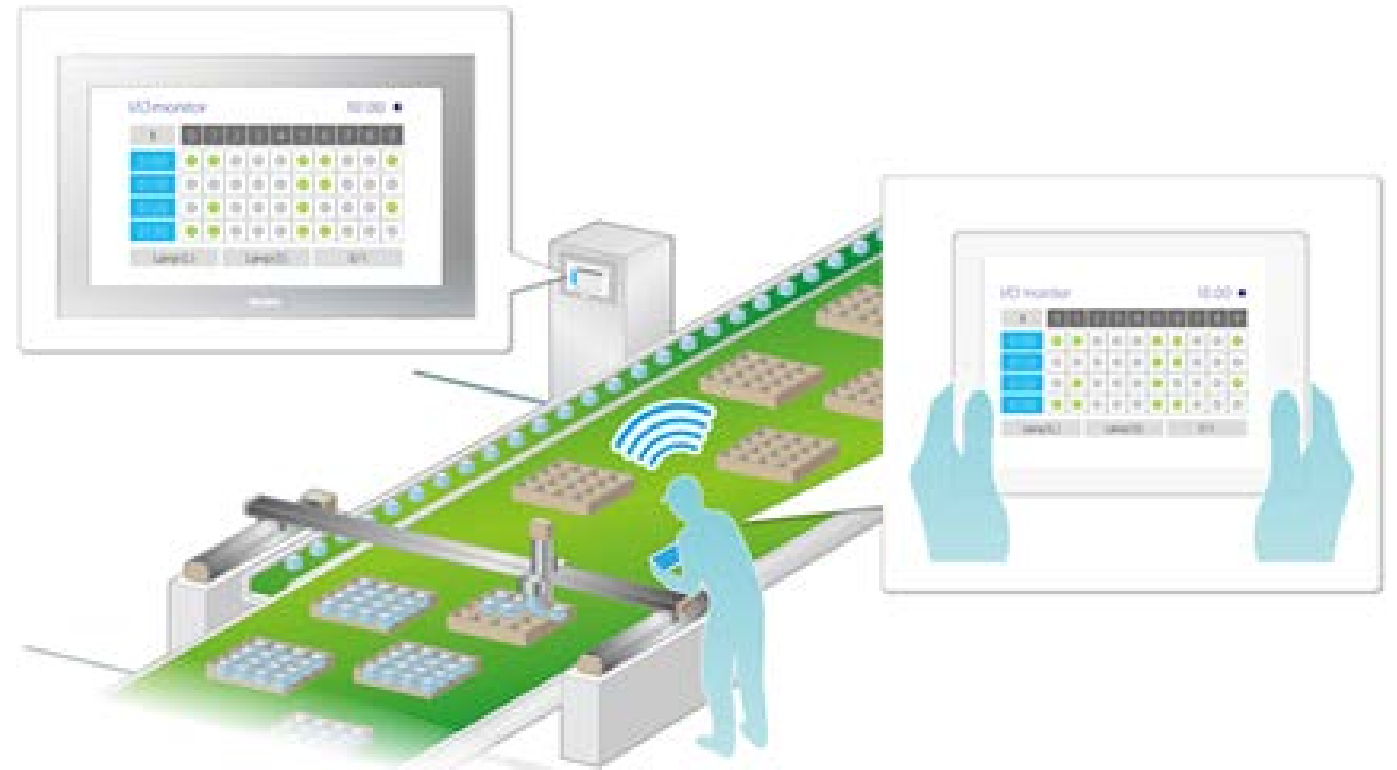
Design- and maintenance-conscious interface layout



To make things easier for designers and maintenance personnel, the interfaces have all been gathered on the lower part of the unit.

# Remote debugging for reduced labor at start-up

The ability to perform operations with a tablet means a worker can continue with operation checks even when the operation panel for checking I/O and other operations is not near the check location, such as with large equipment or lengthy equipment that uses conveyors or the like.



About  
Pro-face  
RemoteHMI

# Pro-face Remote HMI



# Maintenance

## No need for regular maintenance thanks to a fan-less design

Industrial computer fans for excessive heat can stop functioning due to dust, oil, or other factors from the manufacturing site.

By using a fan-less design, there's no need to change the fan on a regular basis, thus reducing maintenance costs and management effort.



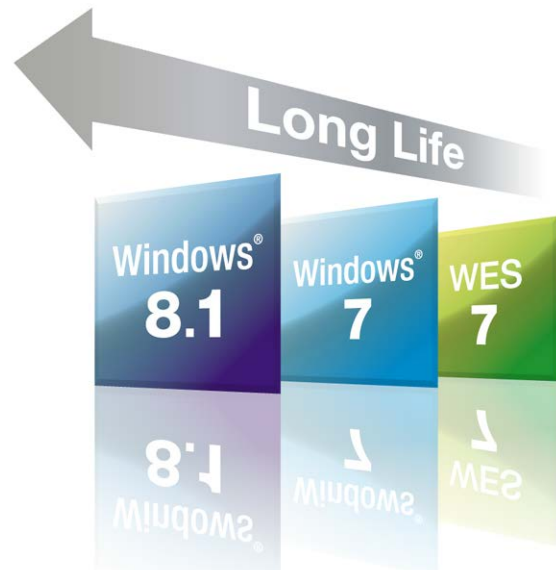


# Washable PC (IP66)



# Reliability

Stable, long-term supply of OS updates for a longer equipment life



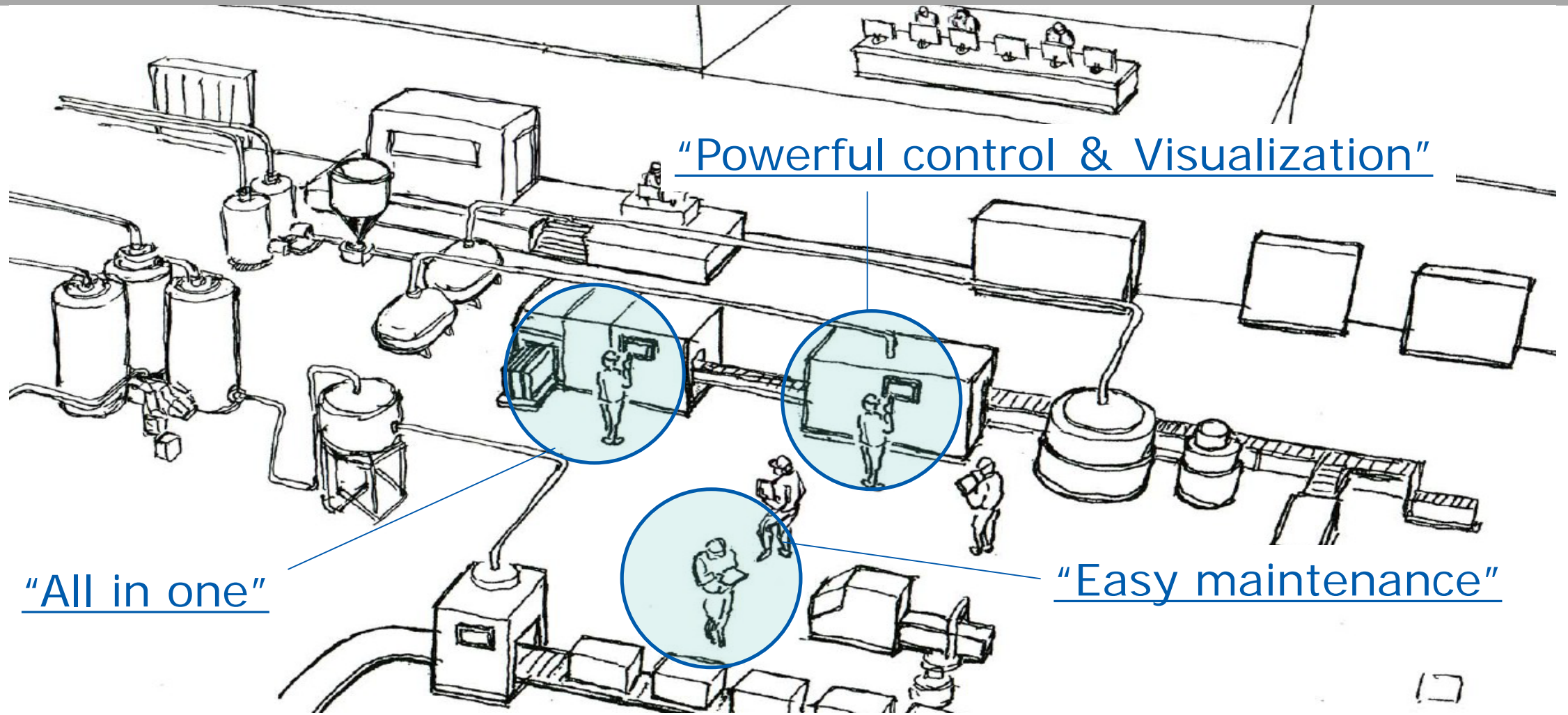
customer demand requires a design that assumes the equipment will be used for a long time.

Worldwide support for worry-free global expansion



With Pro-face offices all over the world, customers can receive repairs.

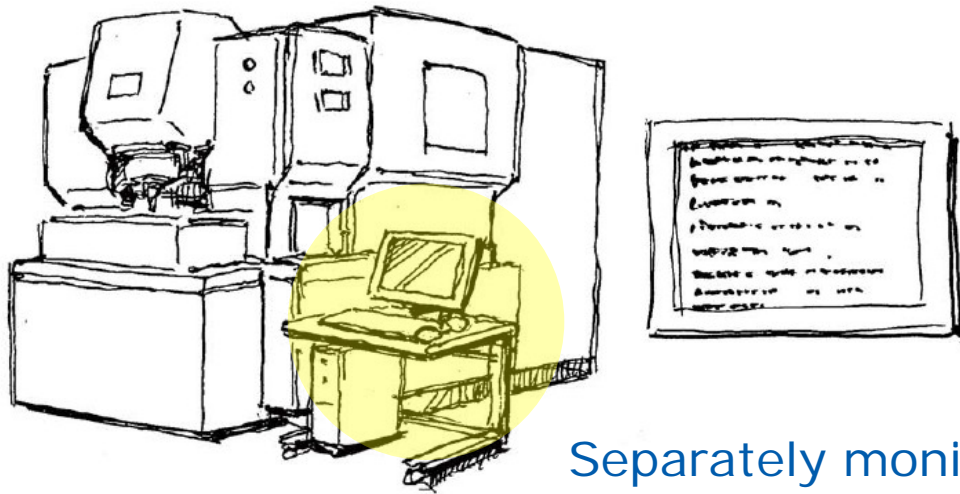
# Application with Powerful Solution



# Powerful control & Visualization

## Before

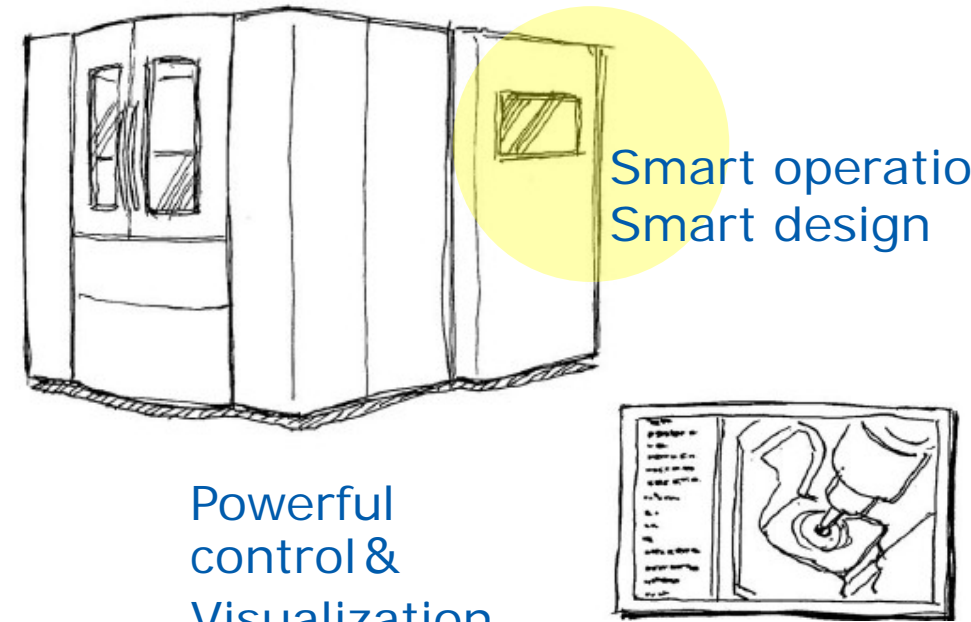
Because high specifications are required, therefore I use a general PC. However, separate location is required.



Separately monitor  
Separately PC

## After

The best performance IPC in the industry. Both the function and the design become stylish.



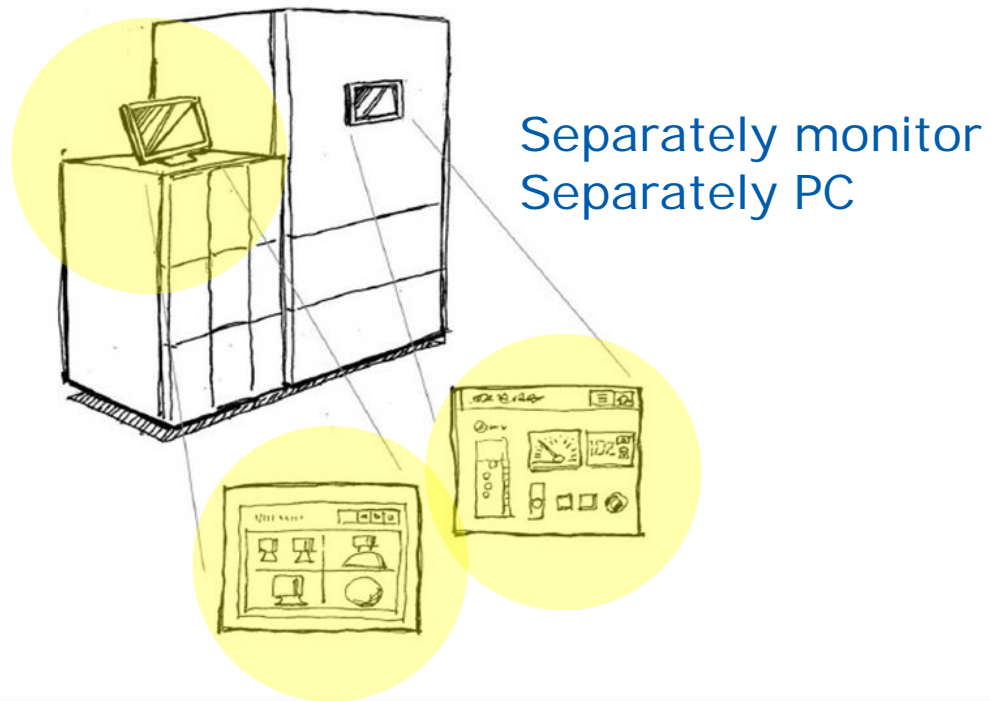
Powerful  
control &  
Visualization

Smart operation  
Smart design

# All in one

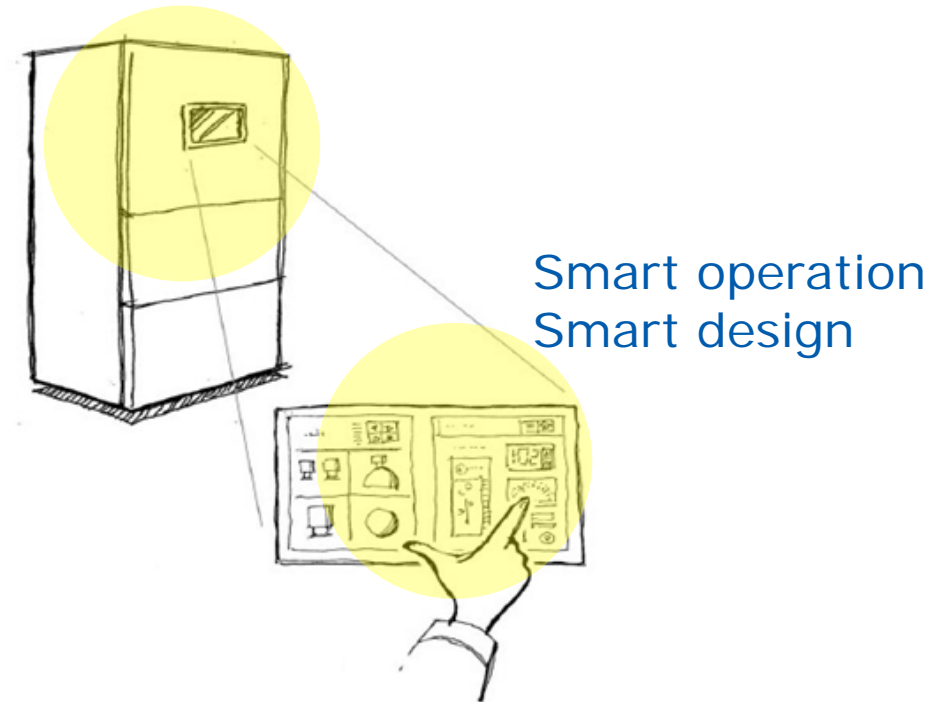
## Before

PC and monitor need to be located separately.  
Waste of the cost and inefficient operation.



## After

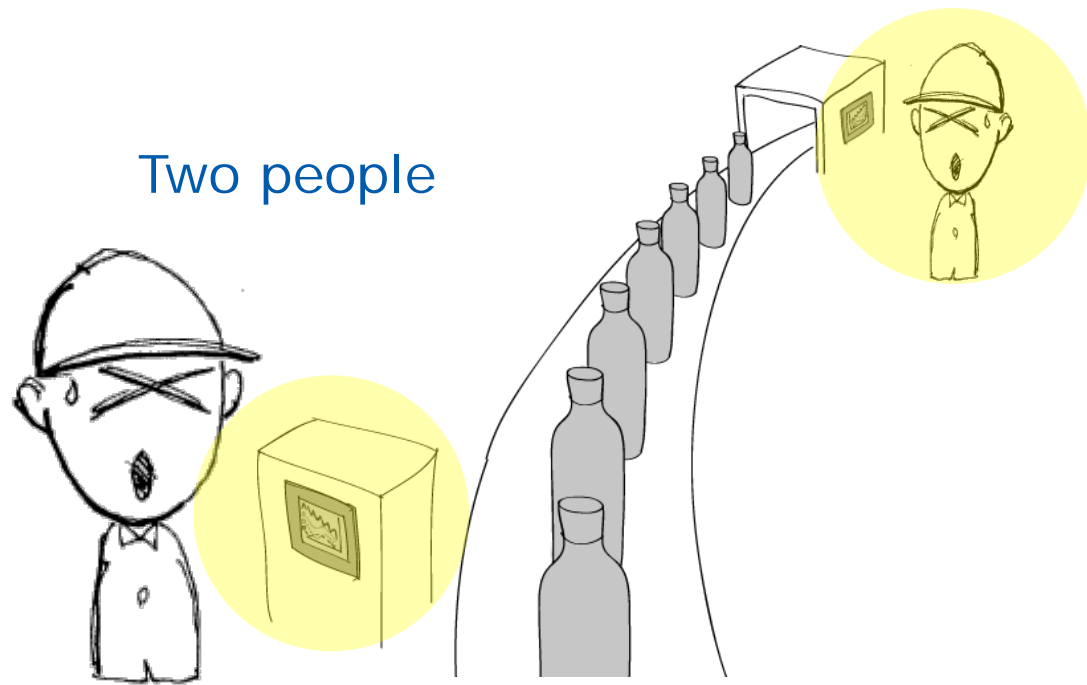
Operate smoothly with a single wide screen.  
Besides, it is an exclusive PC-free and is low-cost.



# Easy maintenance

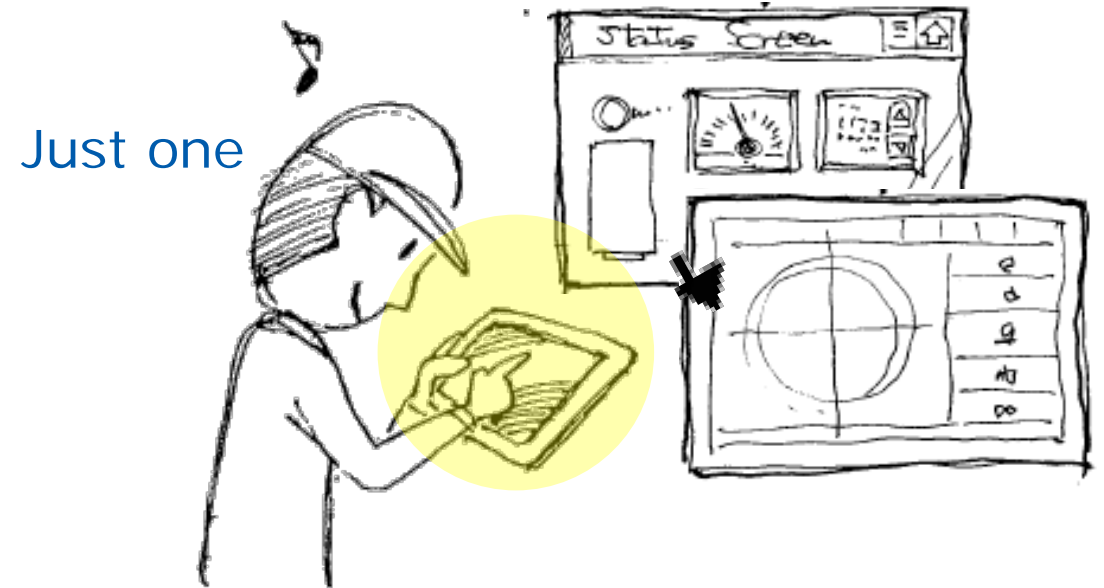
## Before

It takes time to debug and maintain in a long line or big device by alone. Therefore two people are always necessary.






## After

Operate smoothly with a single wide screen. Besides, it is an exclusive PC-free and is low-cost.



# PS5000 Series Lineup

			BOX	10w"	15"	15w"	19w"	22w"
<b>Modular Type</b>  Box PC X    Display module design provides flexible functionality and size	<b>Core i7 model</b> 8GB or 16GB 24VDC/100-240VAC *option	0/2 slots	-	-	PS-5700T _** <Single touch>	PS-5700W _**	PS-5800W _**	PS-5900W _**
	<b>Celeron model</b> 4GB or 8GB		-	-	PS-5700T _** <Single touch>	PS-5700W _**	PS-5800W _**	PS-5900W _**
<b>Slim Type</b>  Slim design with single display	<b>Core i3 model</b> 8GB 24VDC/100-240VAC *option	0 slot	-	-	-	PS-5711W _**	PS-5811W _**	-
	<b>Atom model</b> 4GB		-	PS-5501W _**	-	PS-5701W _**	PS-5821W _**	Enclosed model
<b>Box Type</b>  Horizontal and Vertically standing	<b>Core i7 model</b> 24VDC/100-240VAC *option	0/2 slots	PS-5000B-**	-	-	-	-	-
	<b>Celeron model</b>		PS-5000B-**	-	-	-	-	-

▶ [Top](#)

▶ [Lineup](#)


▶ [Specification](#)

▶ [Interface\(3D\)](#)

▶ [Configurator](#)

# General Specifications

[> Next](#)  
([Functional Specifications](#))

	PS5711W	PS5811W
Bezel	Aluminum	
International Safety Standards		
Rated Input Voltage	DC Power Model: 24 Vdc $\pm$ 20 % * Optional AC Power adapter : 100 to 240 Vac	
Power Consumption	18 W (Max 60W)	28 W (Max 60W)
In-Rush Current	Typ. 7 A	
Surrounding Air Temperature	When using SSD/CFast running : 0 to 55 °C [32 to 131 °F] When using HDD running : 0 to 45 °C [32 to 113 °F]	
Storage Temperature	-20 to 60 °C [-4 to 140 °F]	
Ambient Humidity	10 to 95 % RH (Wet bulb temperature: 40 °C [104 °F] max. - no condensation)	
Storage Humidity	10 to 95 % RH (Wet bulb temperature: 40 °C [104 °F] max. - no condensation)	
Pollution Degree	For use in Pollution Degree 2 environment	
Air Pressure (altitude range)	2,000 m [6,560 ft] max.	
Vibration Resistance	Operation for products with SSD or CF card storage device: 5 to 500 Hz: 2Grms Operation for products with HDD storage device: 5 to 500 Hz: 1Grms	
Concussion Resistance	IEC 60068-2-27 Ea test	
Electromagnetic Compatibility (EMC)	Immunity to High Frequency Interference Electromagnetic Emissions Class A	
Structure	IP66	
Cooling Method	Passive heat sink for the operation	
Weight Approx.	6.0 kg [13.22 lb]	7.0 kg [15.44 lb]
External Dimensions	W419.7 x H269.0 x D56.7 mm [W16.52 x H10.59 x D2.23 in.]	W488.0 x H309.6 x D56.7 mm [W19.21 x H12.17 x D2.23 in.]
Panel Cut Dimensions	W412.4 x H261.7 mm [W16.24 x H10.30 in.]	W479.3 x H300.3 mm [W18.87 x H11.82 in.]

[▶ Top](#)

[▶ Lineup](#)

[▶ Specification](#)

[▶ Interface\(3D\)](#)

[▶ Configurator](#)



# Functional Specifications

[> Previous](#)  
[\(General Specifications\)](#)

		PS5711W	PS5811W
Display Size		15.6"	18.5"
Display Colors		16.7 million	
Backlight		LED Life span > 50,000 h @ 25 °C [77 °F]	
Brightness Control		Step less adjustment	
Supported OS		HDD or SSD: Windows7 Ultimate (64bit) or Windows Embedded 8.1 Industry (64bit) CFast: Windows Embedded Standard 7 Premium (64bit)	
CPU		Core i3-4010U 1.7GHz	
Main Memory		DDR3 8 GB	
Chipset		Intel QM87	
Graphics Accelerator		Inte HD Graphics 4400	
Video Memory		Up to 1.7 GB	
Graphics		FWXGA TFT (1,366 x 768 pixels)	
Touch Panel Type		Projected capacitive	
Touch Panel Resolution		4,096 x 4,096	
Interface	Serial ATA	HDD or SSD x1 CFast: x1	
	Serial (COM1)	RS-232C (D-Sub 9-pin, plug)	
	Serial (COM2)	RS-232C/422/485 (D-Sub 9-pin, plug)	
	Ethernet (LAN1)	10/100/1000 Mbit/s (RJ-45 Modular jack)	
	Ethernet (LAN2)	10/100/1000 Mbit/s (RJ-45 Modular jack)	
	USB (TYPE-A)	USB 3.0 x2 (bottom side)	
	Video	HDMI x1	
	Audio	Line out x1	
	Expansion slot	Optional Interface x1 (mPCIe)	

▶ [Top](#)

▶ [Lineup](#)

▶ [Specification](#)

▶ [Interface\(3D\)](#)

▶ [Configurator](#)



**Pro-face**  
for the best interface