

Pro-face™

by Schneider Electric

Versatile software BLUE



**Effectively manage devices
for your machine
with many device drivers**

Connect to control devices
around the world. Select the driver
that meets your needs.



**Rich and expressive
interfaces with intuitive
operation**

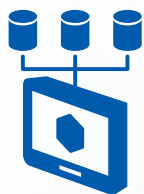
Anyone can reach easily
understandable information.

VERSATILITY



**Reduce time to create
a project with flexible
scripting and modern
design methods**

Create and customize
screens efficiently



**Effectively use
machine information.**

Make the best of machine
information and communicate
smoothly with
management systems.





Visualization Operation

Responsive design

Zoom out to focus on important information, zoom in for detailed information.



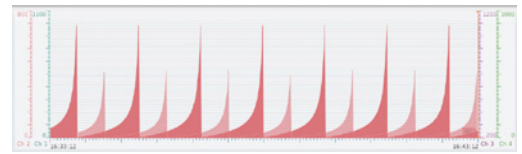
Just one step to show detailed information

Access information with fewer clicks



Easily identify patterns with highly flexible graph features

Using various features, including comparisons graphs, can be more expressive than ever before.



Compare with past data with just one touch. (Multi-scale, Split mode, Rectangle graph, Block trend)

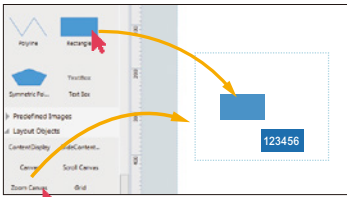
Smooth display with anti-aliasing even when zoomed



Drawing

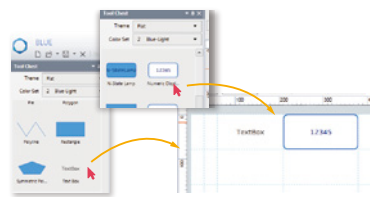
Easily create gesture screens

Just drag and drop the target objects on screens.



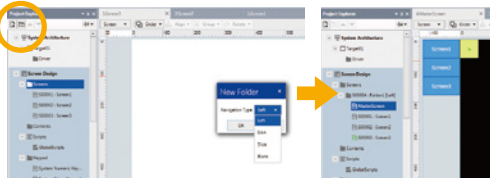
Reduce time for layout changes

Use grid cell editing to automatically adjust an object's size and location during layout changes.

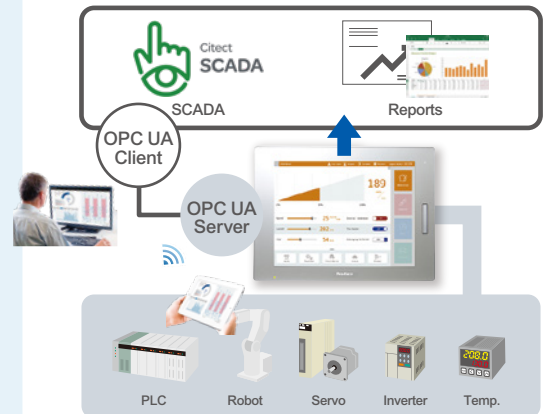


Set navigation easily

With the navigation feature, you don't need to create screen change switches.



Data Access & Connectivity



Connect to up to 10 drivers at the same time (PS6000/PS5000 and PCI/AT and SP5000:10, GP4000*/ST6000/STM6000:4, GP4100 Color Model:2)
*GP4000 is no longer supported by BLUE from 3.1 Service Pack 1 and thereafter

Model#	Descriptions
PFXBLPCZLSP***	BLUE Professional Single license
PFXBLPCZLGP***	BLUE Professional Group License (3 Licenses / License key code)
PFXBLPCZLTP***	BLUE Professional Team License (10 Licenses / License key code)

Model#	Description
PFXBLECZLS****	BLUE Basic Single license * Only for ST6000/STM6000 Series / GP4100 Series Color Model
PFXBLRCZLSP** **	BLUE Runtime *For Windows PC
PFXWRT***	BLUE Web Viewer Runtime
PFXBTUSB32	BLUE USB Media Installer

Supported Model
■ SP5000
■ ST6000/STM6000
■ GP4100 Color model
■ PS6000/PS5000, PCI/AT

Some models are not supported. For more details, please see BLUE website.

Please check our website for more details and to understand how to complete the references (***)

⚠ WARNING

HAZARD OF OPERATOR INJURY, OR UNINTENDED EQUIPMENT DAMAGE
Before operating any of these products, be sure to read all related manuals thoroughly. Failure to follow these instructions can result in death, serious injury or equipment damage.

- For printing purposes, the colors in this catalog may differ from those of the actual unit.
- Actual user screens may differ from the screens shown here.
- Electrical equipment should be installed, operated, serviced, and maintained only by qualified personnel. No responsibility is assumed by Schneider Electric Japan Holdings Ltd. for any consequences arising out of the use of this material.
- All product names used in this catalog are the registered trademarks or trademarks of their respective companies.
- All information contained in this catalog is subject to change without notice.

Pro-face
by Schneider Electric

Visit our website for more information.
www.proface.com