

Chapter 9

System Monitor

Subject of this Chapter

This chapter describes the system monitor features of the Industrial Personal Computer.

What Is in This Chapter?

This chapter contains the following topics:

Topic	Page
System Monitor Interface	102
Using System Monitor	106
Using Remote Monitoring	109
Using Notification Center	112

System Monitor Interface

Overview

The **System Monitor** interface provides remote monitoring, a features that helps you to access multiple clients through a single console for remote device management. The **System Monitor** immediately recognizes equipment and provides real-time equipment maintenance, which improve system stability and reliability.

Remote Monitoring monitors the system status of remote devices. The monitored items include hard disk temperature, hard drive health, network connection, system/CPU temperature and system voltages.

Remote Monitoring also provides support for function logs so that managers can regularly check the status of their remote devices.

The **System Monitor** can display messages when thresholds are exceeded.

System Monitor Requirements

Operating system requirements:

Operating system
Windows Embedded Standard 7 (WES7P) SP1 64 bits MUI
Windows 7 Ultimate SP1 64 bits
Windows Embedded 8.1 Industry 64 bits MUI

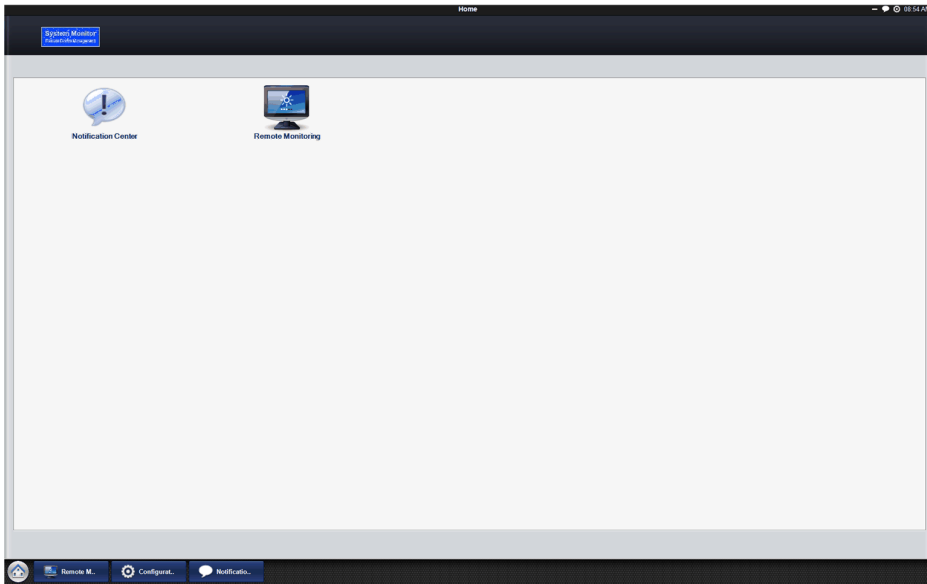
Software requirements:

Description	Software
Framework	Microsoft.NET Framework version 2.0 or higher
Driver	Pro-face Software API

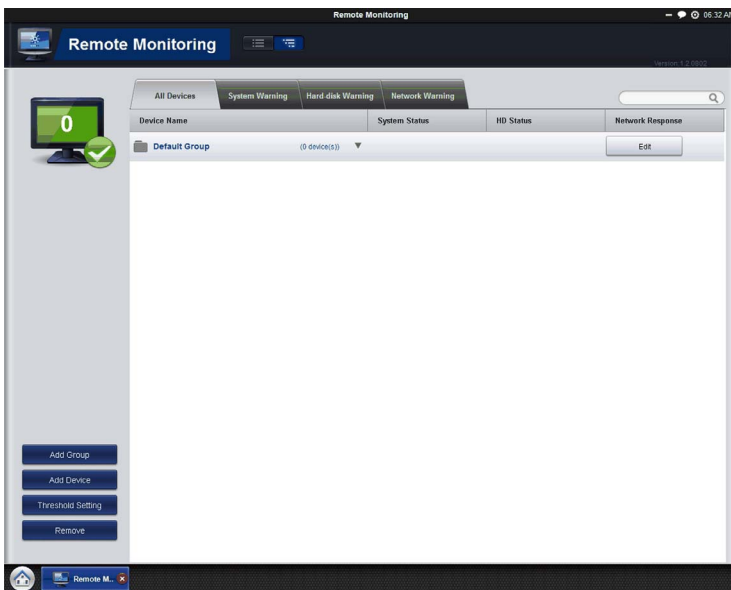
System Monitor Console

The **System Monitor** console acts as a server for the clients. Devices that run on the **System Monitor** console display the health and status information from **System Monitor** clients. The console has to be made available by the client over a network.

To launch the **System Monitor** console, click **Windows Start Menu** → **All Programs** → **Pro-face** → **System Monitor**

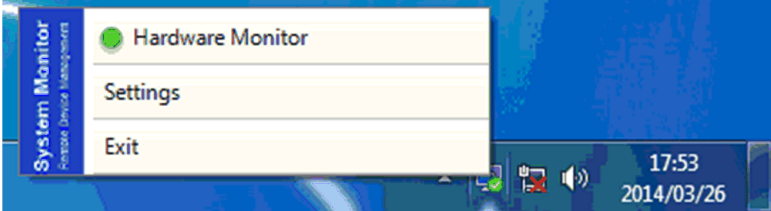
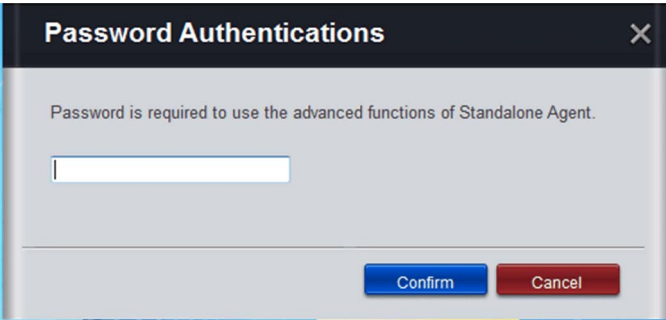
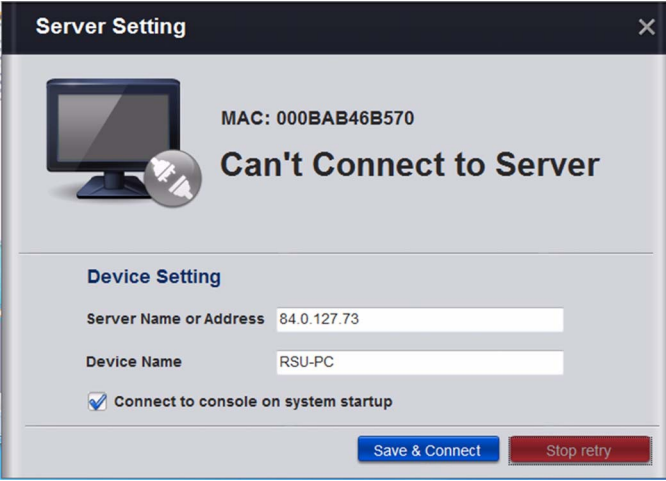


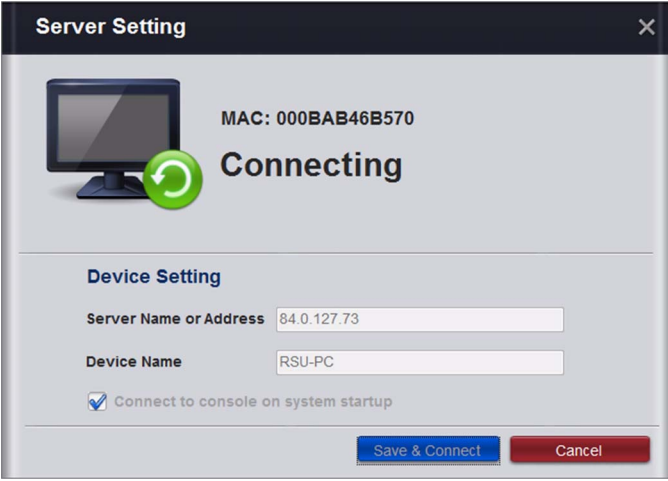
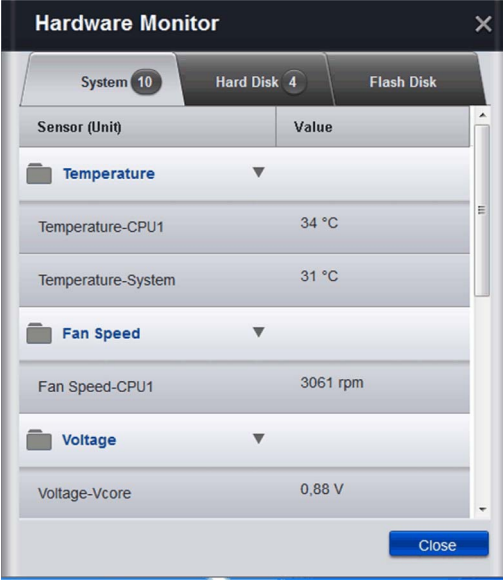
Click **Remote Monitoring** application:



System Monitor Agent

This procedure describes the **System Monitor Stand Alone Agent** general user interface:

	Description
1	<p>The System Monitor stand alone agent automatically starts when the system starts. To enter a new server IP address, open the System Monitor Agent, click the icon in the toolbar:</p> 
2	<p>Enter your Password Authentications:</p> 
3	<p>Enter your server IP address. Your server is the device which has System Monitor console running. Name the device gives the possibility to recognize it in multiple client configurations:</p> 

	Description
4	<p>Click Save & Connect to connect the agent to the System Monitor console server:</p> 
5	<p>To see the Hardware Monitor, open the System Monitor Agent, click the icon in the toolbar:</p> 

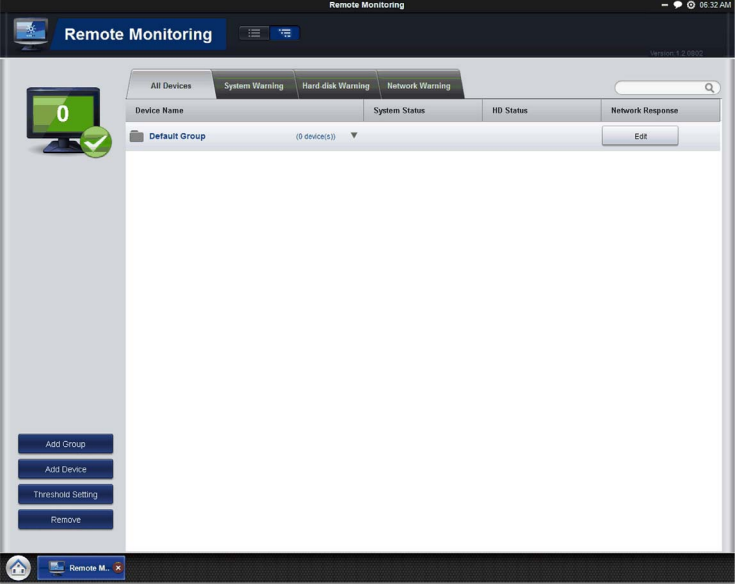
Using System Monitor

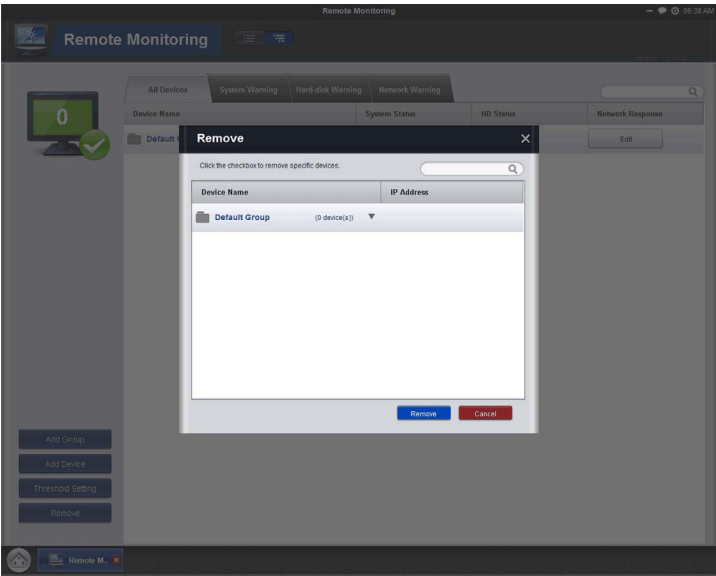
Overview

System Monitor is for remote device management.

Using System Monitor

This procedure describes the **System Monitor** general user interface:

	Description
1	<p>Search bar: You can search for a device by device name. The list view shows the result instantly.</p>  <p>Hierarchical or Flat Viewing Mode: click the buttons on the right to the application name to switch between hierarchical or flat viewing mode. In the hierarchical mode, the devices can be divided into different groups for easier management; in flat viewing mode, all the devices are shown in the same page to have the overview of all the devices.</p>
2	<p>Group Tab: according to the information or functionality they are divided into several tabs. The tabs also display the number of current devices.</p>
3	<p>Sorting: click on the column header to sort all the important information. Default is to sort by device name.</p>
4	<p>Device item: shows all device items.</p>
5	<p>Status count: this shows the values that users care most about.</p>
6	<p>Extended function: for each user, every remote application has its own customized functions.</p>

Description	
7	<p>Remove devices: If a device is offline for some time and you do not want it to show up, click the Remove Device button to remove it.</p> <p>NOTE: If the device comes online, it shows up again.</p> 

Configuration

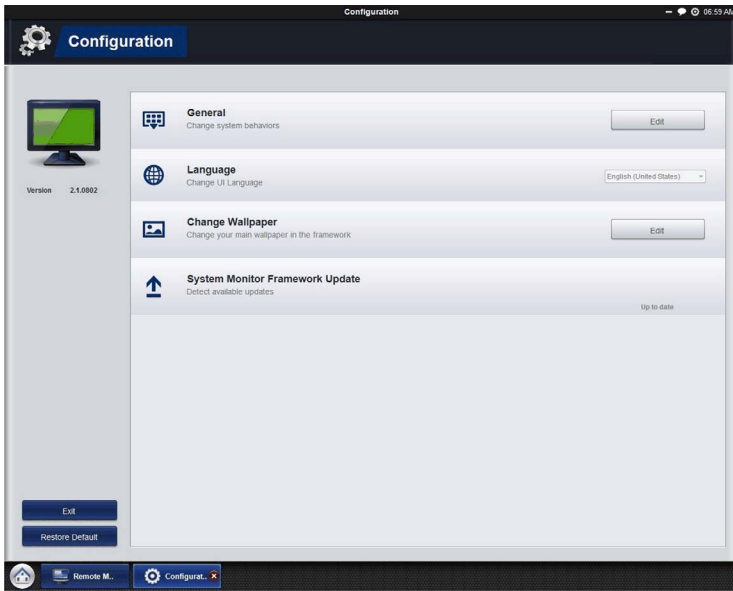
You can set configuration such as auto start up, language selection, wallpaper and update.

General (Change system behaviors): click **Edit** to set **System Monitor** to appear in the system tray and then set it to appear automatically in the system tray when the OS starts up.

Language (Change User Interface Language)

Change Wallpaper (Change your main wallpaper in the framework): click **Edit** to select your own wallpaper on the main screen.

System Monitor Console Framework Update (Detect available updates): when the console connects to the internet and finds a new update on the server, the **Update** icon is enabled and allows you to update online. Sometimes, the updater will ask you to reboot this device when the update is complete.

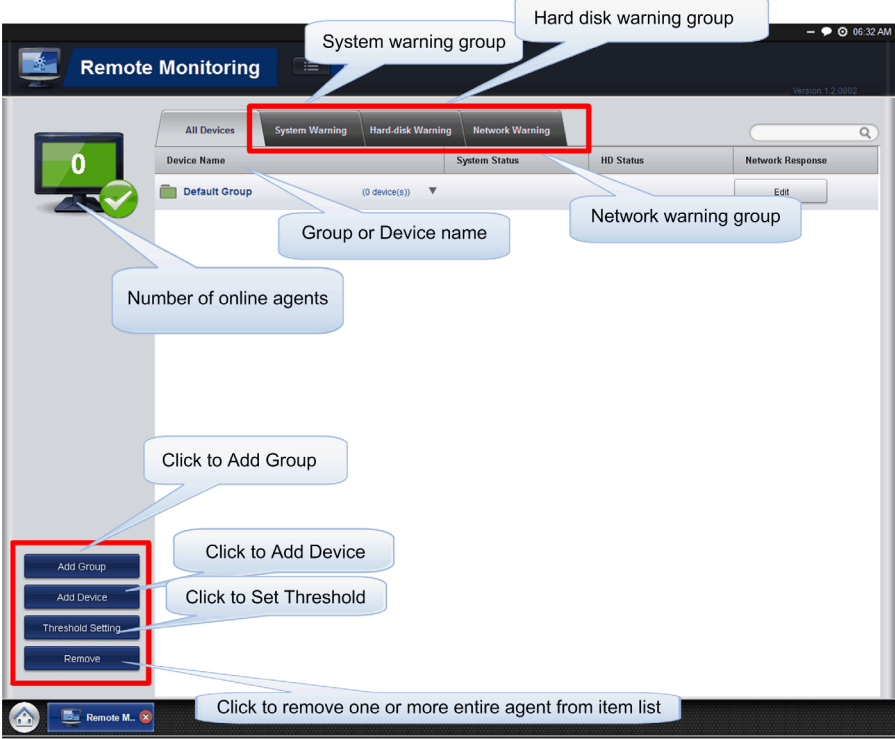


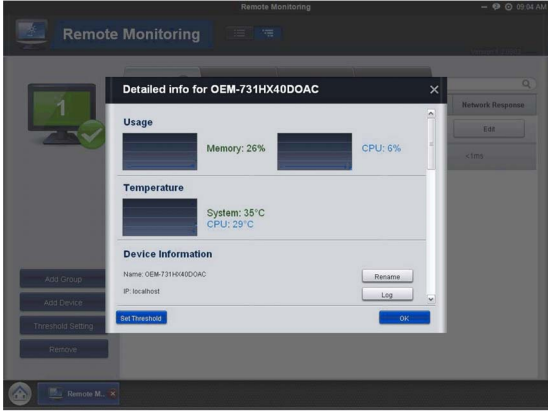
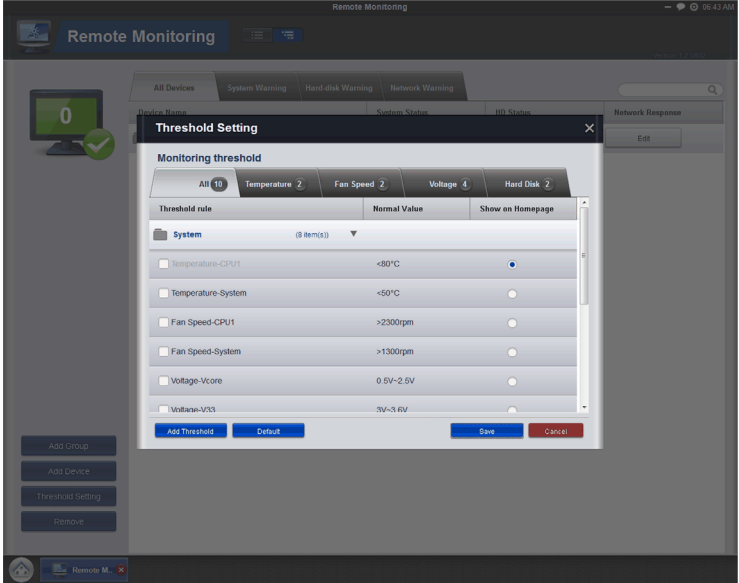
Using Remote Monitoring

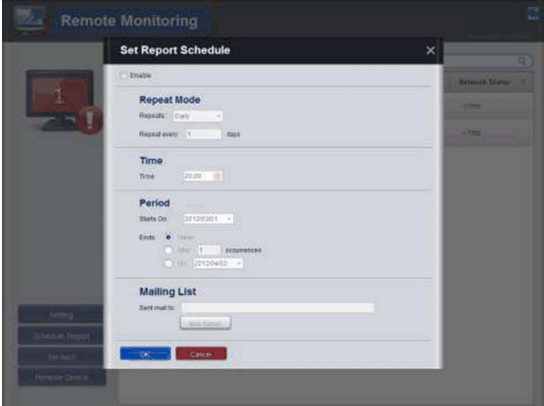
Remote Monitoring

The **Remote Monitoring** application monitors the system status of remote devices, this includes hard disk temperatures, hard drive health, network connection, system/CPU temperatures, system/CPU fan speeds and system voltages. Email alarms and function logs are generated so that managers can regularly keep track of their remote devices.

This procedure shows to access the **Remote Monitoring** application:

	Description
1	<p>Click Remote Monitoring icon to run the application. Main application screen.</p>  <p>Add Group: create group name and edit description then add device(s) to a specific group.</p> <p>Add Device: click Add Device to add devices. Click Search to scan for device(s) on the LAN and select the devices which you wanted then add it/them.</p> <p>Threshold Setting: monitoring threshold contains four items: Temperature, Fan Speed, Voltage, and Hard Disk. In addition to the defaults, managers can increase or decrease items from this page. When the status higher or lower than threshold, the number color will change to red for warning.</p> <p>Remove: if you have determined that your device or group is not online, click Remove to remove it from the list.</p> <p>Update All Agent: console detect agent's update status, once one of your agents on device list is not up to date, the icon Update All Agents icon will show on the top of extended function, and you can update all agents by clicking it.</p> <p>Manage device of group: click Edit on the device bar to add or remove device(s). Click Edit to edit group name and related description.</p>

	Description
<p>2</p>	<p>Detailed device status: click device to get detailed information contained several items: CPU/Memory Usage, System Temperature, CPU Temperature, Device MAC Address, Motherboard Model, BIOS version, Processor Model, Memory Capacity, OS version, System Status, Storage Status and Network Status.</p> 
<p>3</p>	<p>Monitoring threshold settings The Setting window can be used to monitor threshold setting, this contains 4 items: Temperature, fan speed, voltage, and hard disk. In addition to this, managers can increase or decrease items in this page.</p> 

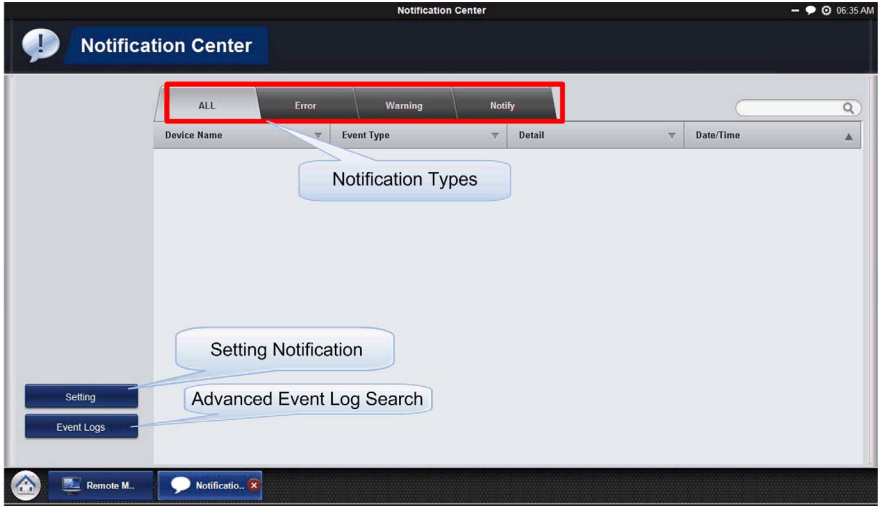
	Description
4	<p>Set report schedule</p> <p>The main feature for this is to set up a schedule and the running report status. The function is based on the information that you set in the Set Report Schedule window. If you want to use the schedule and the repeat functions, follow the step-by-step instructions: Click the Schedule Report button to start, and set the repeat mode, time, and mailing list recipient then press the OK button.</p> 

Using Notification Center

Notification Center Monitoring

The **Notification Center** application manages the messages with 3 different types: Error, Warning, and Notify.

This procedure shows the **Notification Center** application:

	Description
1	<p>Click Notification Center icon to run the application. Main application screen.</p>  <p>All: list latest 500 logs in 5 pages, and allow search bar to search the latest 500 event logs. Setting: shows advanced notification center settings.</p>
2	<p>Event Logs: click the Event Logs icon to search the log. Search: you can search all logs here within a period by keyword. Export: log supports to be exported for your searching result.</p>