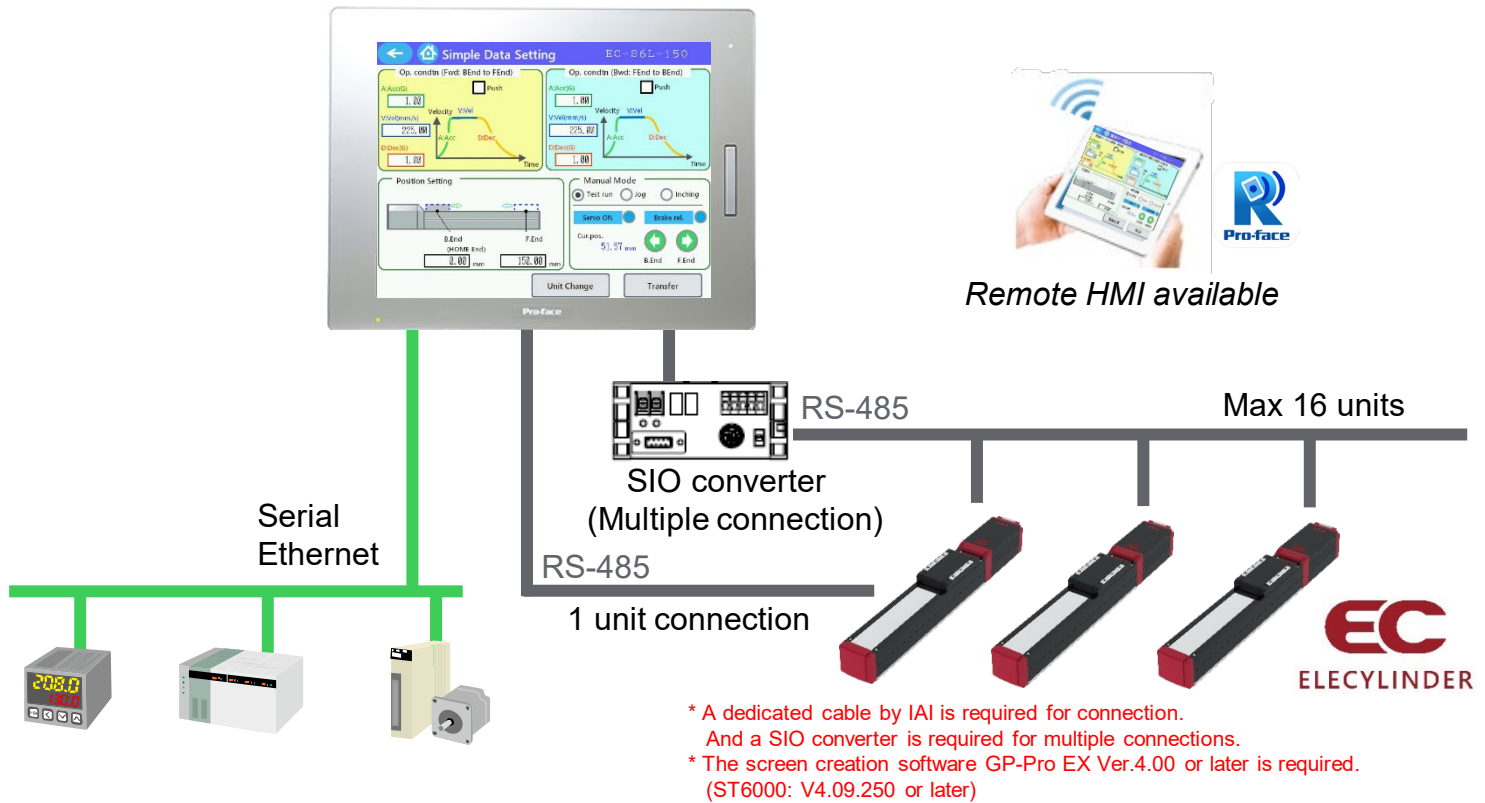


Monitor and operate

# [Simple Data Setting] screen of Touch Panel Teaching pendant on Pro-face HMI

**IAI**  
Quality and Innovation



## Monitor and Set speed and Position data

- ✓ Easy position data settings and setting of A: acceleration, V: velocity, and D: deceleration for forward and backward positions of the ELECYLINDER
- ✓ Check the current setting for up to 16 ELECYLINDERS
  - Individually check the current setting of a single ELECYLINDER
  - Set / Change axis numbers and axis names.
- ✓ Manual operation (JOG operation and incrementing)
- ✓ Remote monitoring and operation on a tablet or a PC with Pro-face Remote HMI is available



Download connected device sample screens from webpage.

[https://www.proface.com/en/download/device\\_sample/iai/elecylinder](https://www.proface.com/en/download/device_sample/iai/elecylinder)



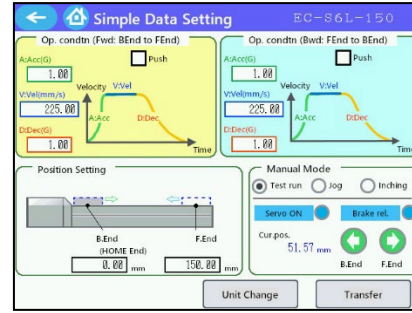
## ■ Sample Screens

### Axis Select Screen



Check the connection status of ELECYLINDER.

### Simple Data Setting Screen



Able to configure AVD settings of forward and backward, position settings for the ELECYLINDER and to perform manual operation.

Image of the initial screen after model selection

## ■ Supported ELECYLINDERS by IAI



Category	Type	Model
Slider	Standard	-
		Motor return
	Belt Drive	-
		Bottom Mounted
	High rigidity	-
		Motor return
Large	-	
	Ultra-Mini	
Rod	Standard	-
		Motor return
	Radial cylinder	-
		Motor return
	High rigidity radial cylinder	-
		Motor return
	Small	-
	Dust-proof, drip-proof	-
	Dust-proof, drip-proof radial cylinder	-
	Ultra-Mini	-
Table	Small	-
	Ultra-Mini	-
Stopper Cylinder	-	-
Rotary	-	-
	Large	-
Gripper	-	-

## ■ Supported Display Units

Series	Resolution	Display unit type of the sample project file *1
GP4000	640 x 480 dot (VGA)	GP-4501T (Analog)
SP5000		
ST6000	800 x 480 dot (WVGA) *2	Box: SP-5B10 Display: SP-5400WA
STM6000		
GP4000	320 x 240 dot (QVGA)	GP-4301T
LT4000		

### Screen Editor:

GP-Pro EX Ver.4.00.000 or later

\*ST6000 series only: GP-Pro EX Ver 4.09.250 or later

\*STM6000 series only: GP-Pro EX Ver 4.09.350 or later

\*1 If you use the other models, you can change a model in the GP-Pro EX project file. For details, please refer to the Technical Guide.

\*2 For WVGA (800x480 pixels), there is function button area at the right of the screen. Please read the manual, "Functions Added to Sample Project File for SP5000 Wide Model".

\*Some already purchased models can be upgraded with a firmware update and a screen data patch.



Products that communicate with ROBO Cylinder (ACON / PCON / SCON) and SEL controllers (XSEL/PSEL/SSEL/ASEL/Table Top systems) are available.

proface.com

Download connected device sample screens to meet your machine.

[www.proface.com/en/download/device\\_sample/iai/elecylinder](http://www.proface.com/en/download/device_sample/iai/elecylinder)

Contact Us (World wide Pro-face)

<https://www.proface.com/en/contact>

© 2022 Schneider Electric Japan Holdings Ltd. All Rights Reserved.