

No PC required

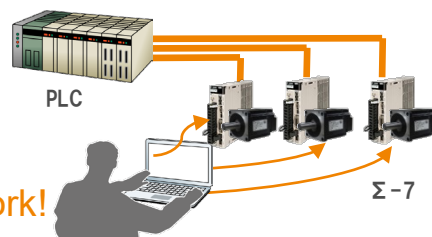
## Work time = Cost Reduction Easy multi-axis parameter adjustment

Open the control panel. Connect to a PC.

Before

- Sudden machine stop
- Servo Drive error
- Multi-axis parameter setting

Open the control panel.  
Connect to a PC. It takes time to work!



Reduces the need to open the control panel.  
No more PC adjustments!

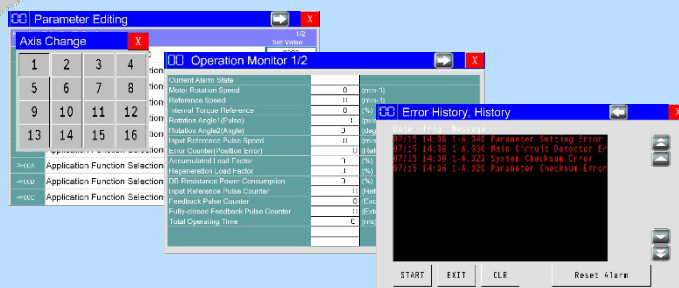
After

Easy to check the status and change the settings!

If you stand in front of the HMI, you can immediately check and set the status of the Servo Drive. Reduce the time to open the control panel and the time to adjust with a PC!

Plus, since multiple Σ-7s can be connected to HMI, the time required for multi-axis parameter adjustment is reduced!

Reduce engineering time by utilizing Device connection sample!



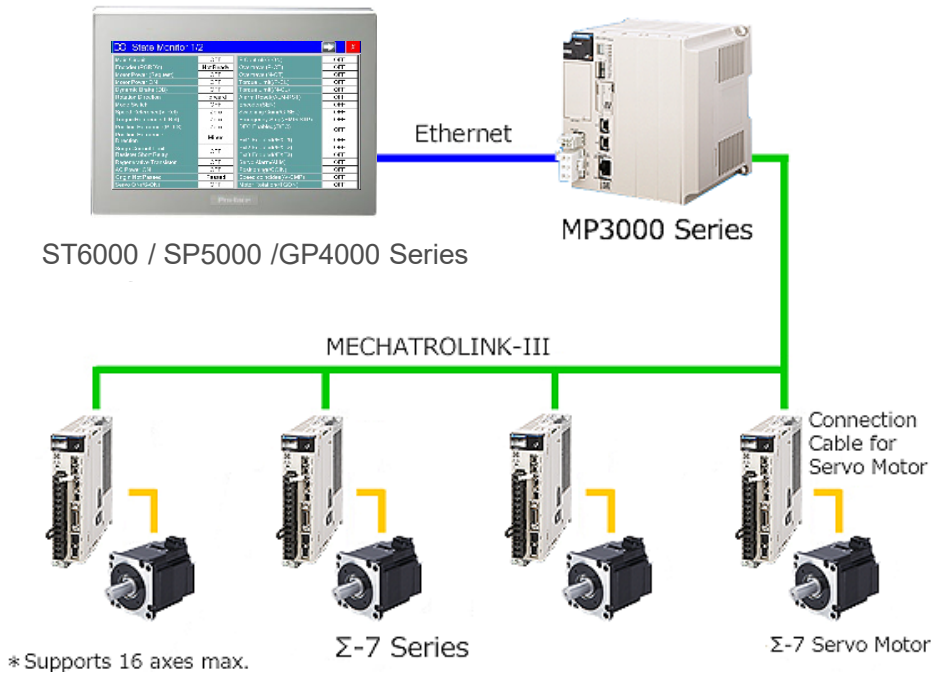
Download



Go to Link

# System Configuration

## Sigma-7 Series



## Sigma-7 Series

YASKAWA Electric Corporation Compatible Models		
ACServoDrive	Sigma-7 Series	SGD7S-xxxx20A (Single-axis SERVOPACK with MECHATROLINK-III)
		SGD7W-xxxA20A (Two-axis SERVOPACK with MECHATROLINK-III)
		SGD7S-xxxx10A (Single-axis SERVOPACK with MECHATROLINK-II)

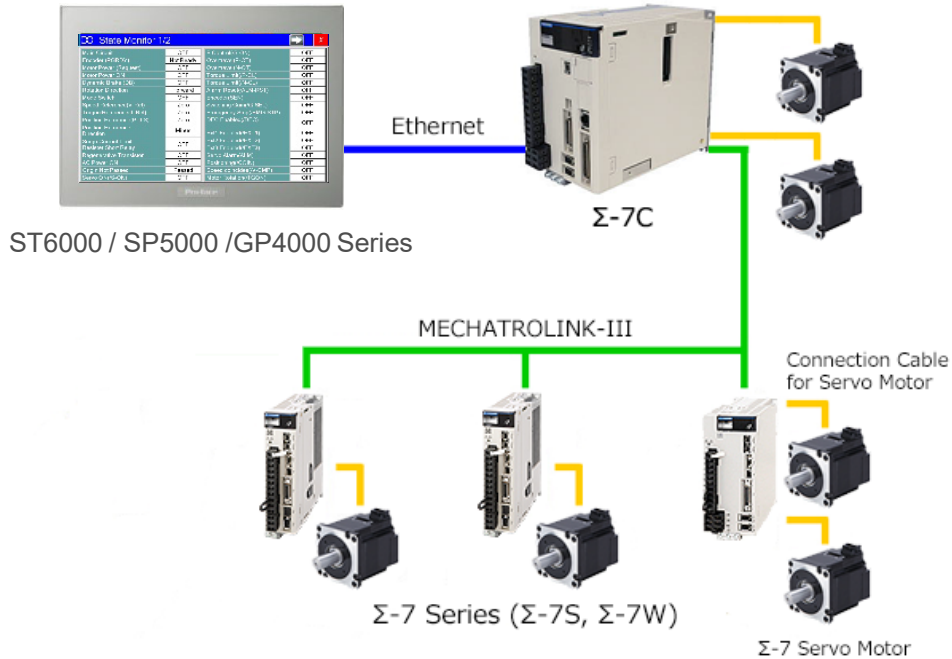
Series	Resolution	Display unit type of the sample project file *1	Screen Editor
GP4000 Series SP5000 Series	640 x 480 (VGA)	Box: SP-5B10 Display: SP-5500TP	GP-Pro EX Ver. 4.03.100 or later
SP5000 Series SP5000X Series	800 x 480 (WVGA) *2	Box: SP-5B10 Display: SP-5400WA	GP-Pro EX Ver. 4.03.100 or later
ST6000 Series			GP-Pro EX Ver. 4.09.300 or later
STM6000 Series			GP-Pro EX Ver. 4.09.350 or later
GP4000 Series	320 x 240 (QVGA)	GP-4301T	GP-Pro EX Ver. 4.03.100 or later
SP5000 Series SP5000X Series ST6000 Series	1280 x 800 (WXGA)	ST-6600WA	GP-Pro EX Ver. 4.09.300 or later
ST6000 Series	1024 x 600 (WSVGA)	ST-6500WA	GP-Pro EX Ver. 4.09.300 or later

\*1 If you use the other models, you can change a model in the GP-Pro EX project file.

\*2 For WVGA (800x480 pixels), there is function button area at the right of the screen. Please read the manual, "Functions Added to Sample Project File for SP5000 Wide Model".

# System Configuration

## Sigma-7C



### YASKAWA Electric Corporation Compatible Models

Two-Axis SERVOPACKs with Built-in Controllers Sigma-7C	Sigma-7 Series SERVOPACKs	SGD7C-***AMAA
--	---------------------------	---------------

Series	Resolution	Display unit type of the sample project file *1	Screen Editor
GP4000 Series SP5000 Series	640 x 480 (VGA)	GP-4501T (Analog Touch Panel)	GP-Pro EX Ver. 4.09.120 or later
SP5000 Series SP5000X Series ST6000Series	1280 x 800 (WXGA)	ST-6600WA	GP-Pro EX Ver. 4.09.300 or later
ST6000Series	1024 x 600 (WSVGA)	ST-6500WA	GP-Pro EX Ver. 4.09.300 or later

\*1 If you use the other models, you can change a model in the GP-Pro EX project file.

# Easy to check the status and change the settings!

## Monitor

**State Monitor 1/2**

Main Circuit	OFF	Pr
Encoder (PGRDY)	Not Ready	Pr
Motor Power (Request)	OFF	Pr
Motor Power ON	OFF	Pr
Dynamic Brake (DB)	OFF	Pr
Rotation Direction	Forward	Pr
Mode Switch	OFF	Pr
Speed Reference(V-Ref)	Zero	Pr
Torque Reference(T-Ref)	Zero	Pr
Position Reference(PULS)	Zero	Pr
Position Reference Direction	Minus	Pr
Surge Current Limit	OFF	Pr
Resistor Short Relay	OFF	Pr
Regenerative Transistor	OFF	Pr
AC Power ON	OFF	Pr
Origin Not Passed	Passed	Pr
Servo ON(S-ON)	OFF	Pr

**Operation Monitor 1/2**

Current Alarm State	0	(min-1)
Motor Rotation Speed	0	(min-1)
Reference Speed	0	(min-1)
Internal Torque Reference	0	(%)
Rotation Angle1(Pulse)	0	(pulse)
Rotation Angle2(Angle)	0	(deg)
Input Reference Pulse Speed	0	(min-1)
Error Counter/Position Error	0	(Reference Unit)
Accumulated Load Factor	0	(%)
Regeneration Load Factor	0	(%)
Ext3 Enabled(EXT3)	OFF	
Ext3 Enabled(EXT3)	OFF	
Servo Alarm(ALM)	OFF	
Positioning(COIN)	OFF	
Speed coincides(V-CMP)	OFF	
Motor Rotation(TGON)	OFF	

**System Monitor**

Motor Power ON	Speed Reference	Main Circuit
Motor Rotation	Speed Coincidence	
(Initial)		
Setup	Alarm	

**Input Signal Monitor**

SI0(CN1-13)
SI1(CN1-7)
SI2(CN1-8)
SI3(CN1-9)
SI4(CN1-10)
SI5(CN1-11)
SI6(CN1-12)

Operation Monitor / State Monitor / System Monitor / Input Signal Monitor / Output Signal Monitor

## Alarm

**Alarm Trace**

No.	Error Data	Working time
01		
02		
03		
04		
05		
06		
07		
08		
09		
10		

**Error History, History**

07/15 14:06 1-A. 640 Parameter  
07/15 14:06 1-A. 630 Main Ctr  
07/15 14:06 1-A. 622 System Cl  
07/15 14:06 1-A. 620 Parameter

START EXIT CLR Reset Alarm

Displays current alarm, alarm history

## Test Run

**Program JOG Operation**

Servo ON/OFF opera

Run

Initial/Halt

Running condition re-setting

Run Condition 1

Pr531: Program JOG Movement Reference (VREF) (0.000/4000)

Pr533: Program JOG Movement Speed (0.000/1000)

Pr534: Program JOG Movement Pattern

Pr535: Program JOG Movement Pattern

0	1	2
3	4	5

Run

Jog Operation

## Parameter

**Parameter(Backup)**

Select a file to be backed up

Error Code

Success

Display Unit->SD/USB

**Parameter(restore)**

Caution

Attention! Parameter of Controller will be rewritten.

Parameter will be restored. Is it OK?

OK Cancel

**Parameter Editing**

Axis Change	1/2	Set Value
1	2	0000
2	3	0000
3	4	0000
4	5	0000
5	6	0000
6	7	0000
7	8	0000
8	9	0000
9	10	0000
10	11	0000
11	12	0000
12	13	0000
13	14	0000
14	15	0000
15	16	0000
Pr00A	Application Function Selections A	0000
Pr00B	Application Function Selections B	0000
Pr00C	Application Function Selections C	0000

Parameter Backup / restore

Parameter Setting



\*Be sure to read the manual and attached instructions before use.

**Free Download Link**

Notes: For support and warranty of products from 3rd party, please contact the manufacturer / distributor of the product.

**Pro-face**  
by Schneider Electric

Visit our website for more information.  
[www.proface.com](http://www.proface.com)



Contact Us (Worldwide Pro-face)  
<https://www.proface.com/en/contact>

Pro-face provides the HMI Specialist service & support certainty around the world.  
<https://www.proface.com/en/solution/video/specialist>