

No PC required

Easy to see Machine Controller status

Open the control panel. Connect to a PC.

Before

Sudden machine stop or error
 Open the control panel.
 Connect to a PC. It takes time to work!



Reduces the need to open the control panel.
 No more PC for adjustments!

After

Easy to check the status without a PC.
 If you stand in front of the HMI, you can immediately check and set the status of the Machine Controller. Reduce the time to open the control panel and the time to adjust with a PC!



Plus, HMI Operators can easily upgrade the program and data on the machine.

Reduce engineering time by utilizing Device connection sample!

User Operation Error Status								
Name	DWG.A	DWG.I	DWG.H	DWG.L	Value	register	Value	
Error Count	SW110	0000	SW172	0000	SW142	0000	SW174	0000
Error Code	SW111	0000	SW173	0000	SW143	0000	SW175	0000
Error A Register	SW112	0000	SW174	0000	SW144	0000	SW176	0000
Changed A Register	SW113	0000	SW175	0000	SW145	0000	SW177	0000
Error F Register	SW114	0000	SW176	0000	SW146	0000	SW178	0000
Changed F Register	SW115	0000	SW177	0000	SW147	0000	SW179	0000
Latest Error Address	SW116	0000	SW178	0000	SW148	0000	SW180	0000
Error DWG No.	SW117	0000	SW179	0000	SW149	0000	SW181	0000
DWG No. of C.P.	SW118	0000	SW180	0000	SW150	0000	SW182	0000
DWG Step of C.P.	SW119	0000	SW181	0000	SW151	0000	SW183	0000
User Operation Error	SW120	0000	SW182	0000	SW152	0000	SW184	0000
	SW121	0000	SW183	0000	SW153	0000	SW185	0000
	SW122	0000	SW184	0000	SW154	0000	SW186	0000
	SW123	0000	SW185	0000	SW155	0000	SW187	0000
	SW124	0000	SW186	0000	SW156	0000	SW188	0000

ALM>User ops./IO error

ERR:Serious failure

BAT:Battery alarm

N-ALP:Motion error

Axis status

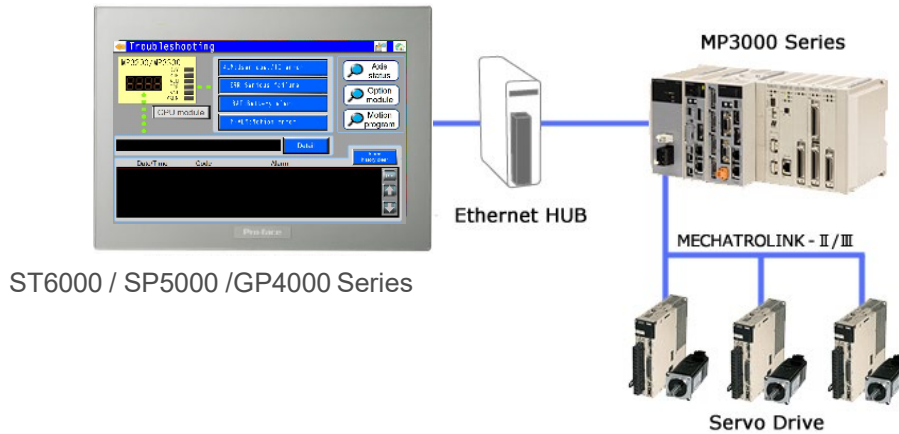
Option module

Motion program



Go to Link

System Configuration



YASKAWA Electric Corporation Compatible Models			
Machine Controller	MP3000 Series	JAPMC-CPxxxxx	
Series	Resolution	Display unit type of the sample project file *1	Screen Editor
GP4000 Series SP5000 Series	640 x 480 (VGA)	GP-4501T (Analog Touch Panel)	GP-Pro EX Ver. 4.09.120 or later
SP5000 Series SP5000X Series	800 x 480 (WVGA) *2	Box: SP-5B10 Display: SP-5400WA	GP-Pro EX Ver. 4.09.120 or later
ST6000 Series			GP-Pro EX Ver. 4.09.300 or later
STM6000 Series			GP-Pro EX Ver. 4.09.350 or later
SP5000 Series SP5000X Series ST6000 Series	1280 x 800 (WXGA)	ST-6600WA	GP-Pro EX Ver. 4.09.300 or later
ST6000 Series	1024 x 600 (WSVGA)	ST-6500WA	GP-Pro EX Ver. 4.09.300 or later

*1 If you use the other models, you can change a model in the GP-Pro EX project file.

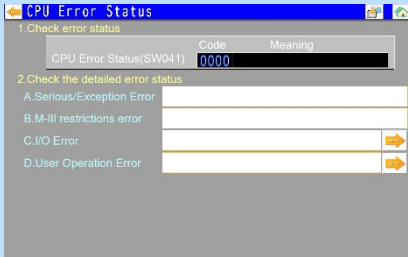
*2 For WVGA (800x480 pixels), there is function button area at the right of the screen. Please read the manual, "Functions Added to Sample Project File for SP5000 Wide Model".

Supported Devices

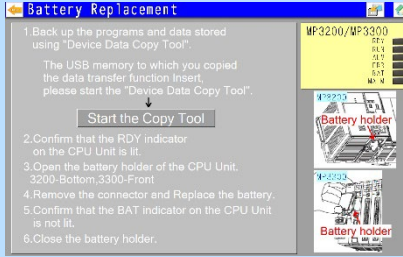
	Bit Address	Word Address
System registers	SB000000 - SB65534F	SW00000 - SW65534
Data registers	IB000000 - IB27FFFF	IW00000 - IW27FFF
Input registers	OB000000 - OB27FFFF	OW00000 - OW27FFF
Output registers	MB00000000 - MB1048575F	MW00000000 - MW1048575
G registers	GB000000000 - GB02097151F	GW000000000 - GW02097151

Easy to check the status and troubleshooting! Let's download Device connection sample

[Go to Link](#)



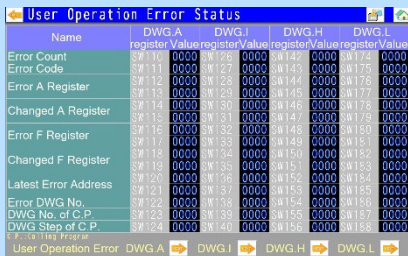
CPU Error Status



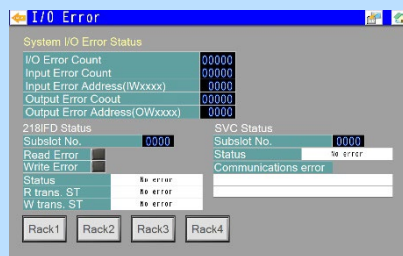
Battery Replacement



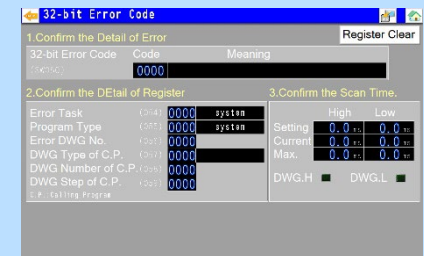
Troubleshooting



User Operation Error Status



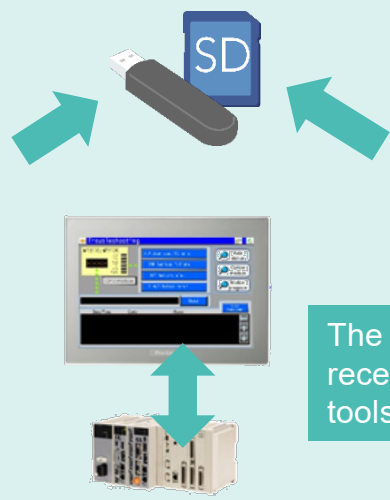
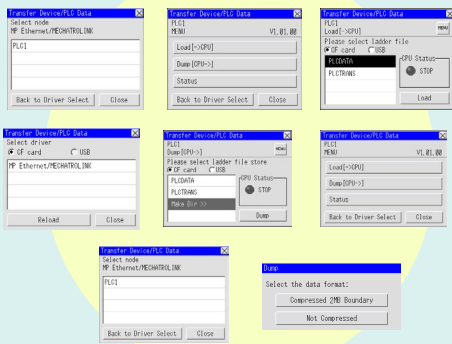
I/O Error



32-bit Error Code

Device Data Copy Tool

Executes files for program transfer can be saved in an external storage device.



Send and receive MP programs via external storage

The program can be sent and received without PC tools(MPE720)

Notes: For support and warranty of products from 3rd party, please contact the manufacturer / distributor of the product.

Pro-face
by Schneider Electric

Visit our website for more information.
www.proface.com



Contact Us (Worldwide Pro-face)
<https://www.proface.com/en/contact>

Pro-face provides the HMI Specialist service & support certainty around the world.
<https://www.proface.com/en/solution/video/specialist>