

Pro-face™

by Schneider Electric

Versatile software BLUE



Effectively manage devices for your machine with many device drivers

Connect to control devices around the world. Select the driver that meets your needs.



Rich and expressive interfaces with intuitive operation

Anyone can reach easily understandable information.

VERSATILITY



Reduce time to create a project with flexible scripting and modern design methods

Create and customize screens efficiently



Effectively use machine information.

Make the best of machine information and communicate smoothly with management systems.





Visualization Operation

Responsive design

Zoom out to focus on important information, zoom in for detailed information.



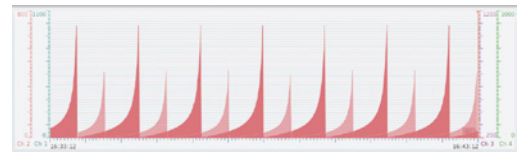
Just one step to show detailed information

Access information with fewer clicks



Easily identify patterns with highly flexible graph features

Using various features, including comparisons graphs, can be more expressive than ever before.



Compare with past data with just one touch. (Multi-scale, Split mode, Rectangle graph, Block trend)

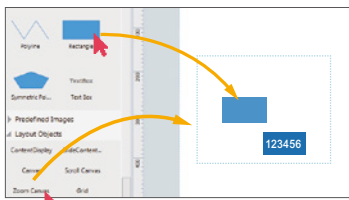
Smooth display with anti-aliasing even when zoomed



Drawing

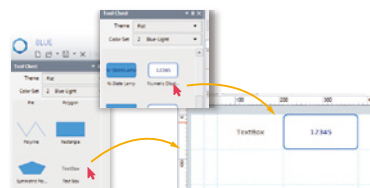
Easily create gesture screens

Just drag and drop the target objects on screens.



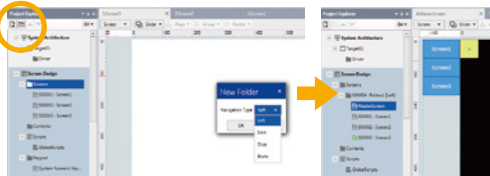
Reduce time for layout changes

Use grid cell editing to automatically adjust an object's size and location during layout changes.

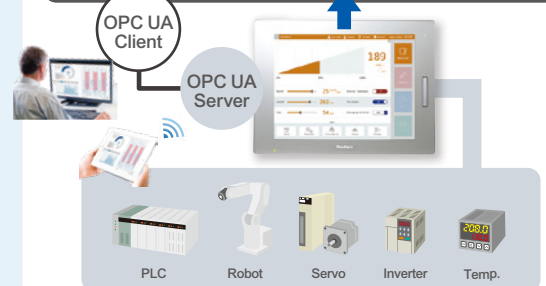


Set navigation easily

With the navigation feature, you don't need to create screen change switches.



Data Access & Connectivity



Connect to up to 10 drivers at the same time (PS6000/PS5000 and PC/AT and SP5000/SP5000X:10, GP4000*/ST6000/STM6000:4, GP4100 Color Model:2)

*GP4000 is no longer supported by BLUE from 3.1 Service Pack 1 and thereafter

Model#	Descriptions
PFXBLCZLSPA3Z	BLUE Professional Single license
PFXBLCZLSPA31	BLUE Professional Group License (3 Licenses / License key code)
PFXBLCZLTPA31	BLUE Professional Team License (10 Licenses / License key code)

Model#	Description
PFXBLECZLSPA3Z	BLUE Basic (Single license)*
PFXBLRCZLSPA31	BLUE Runtime (For Windows PC)
PFXWRT***	BLUE Web Viewer Runtime

Supported Model	
■ SP5000/SP5000X	■ GP4100 Color model
■ ST6000/STM6000	■ PS6000/PS5000, PC/AT

*Only for ST6000/STM6000 Series / GP4100 Series Color Model

Some models are not supported. For more details, please see [BLUE website](#).

Please check our website for more details and to understand how to complete the references (***)

WARNING

HAZARD OF OPERATOR INJURY, OR UNINTENDED EQUIPMENT DAMAGE
Before operating any of these products, be sure to read all related manuals thoroughly.
Failure to follow these instructions can result in death, serious injury or equipment damage.

- For printing purposes, the colors in this catalog may differ from those of the actual unit.
- All product names used in this catalog are the registered trademarks or trademarks of their respective companies.
- Actual user screens may differ from the screens shown here.
- All information contained in this catalog is subject to change without notice.
- Electrical equipment should be installed, operated, serviced, and maintained only by qualified personnel.

No responsibility is assumed by Schneider Electric Japan Holdings Ltd. for any consequences arising out of the use of this material.

Pro-face
by Schneider Electric

Visit our website for more information.
www.proface.com