

# **EPSON**

## **Inkjet Printer Device Driver**

**Microsoft® Windows™ CE 3.0 English / Japanese Release  
Specification**

### **Version 3.36b**

Seiko Epson Corporation  
September 27, 2005

## Revision History

---

Rev.	Description	Date
1	Converted from text file and included UI suppression info.	2005/09/27

## Typographic Conventions

---

<code>courier</code>	Indicates a code excerpt, command, file name, class name, function name, argument, keyword, tag or file content.
<b>bold courier</b>	Indicates a sample command-line entry.
<i>italics</i>	Indicates definitions, emphasis or titles.

## Copyright Information

---

“Microsoft” and “Windows” are registered trademarks of Microsoft Corporation in Japan, the United States and other countries abroad. Any other trademarks referenced in this document are property of their respective owners.

© Seiko Epson Corporation, 2002-2005. All rights reserved.

## Table of Contents

---

1. Overview.....	4
1.1 Summary.....	4
1.2 Supported Printers .....	4
2. Release History .....	6
3. Driver Specification.....	7
3.1 Supported Paper Sizes .....	7
3.2 Margins.....	7
3.3 Supported Paper Types.....	8
3.4 Print Modes and Resolutions (Plain Paper) .....	8
3.5 Memory Requirements (A4 Paper Size) .....	10
4. Included Files .....	15
5. Installation Instructions.....	16
6. Uninstallation Instructions .....	17
7. Application Notes .....	18
Appendix A. Creating A Printer Device Context.....	19
Appendix B. Registry-Stored Print Job Settings .....	21
Appendix C. Callback Function (Error Handling) .....	22
Appendix D. Error Causes and Print Job Severity .....	23
Appendix E. Sample Error Messages.....	24

## 1. Overview

---

### 1.1 Summary

This document contains the specification for the Microsoft® Windows™ CE 3.0- compatible printer driver for Epson inkjet printers.

Driver Version	OS Version	CPU Type	Processor ID
3.36b	Windows CE 3.0	SH4	10005

Table 1.1. Supported Operating System and Processor Configuration

### 1.2 Supported Printers

The printer driver supports a wide range of inkjet printers. The printer driver determines if the printer is supported by checking a device ID string that is sent via USB from the device. Additionally, new ESC-P/R printers (scheduled for release from Spring 2005) are supported by this driver. The following table details the supported models:

Japanese Model	International Model
	Stylus C40
	Stylus C42
-	Stylus C43SX/C44
-	Stylus C45/C46
-	Stylus C65/C66
-	Stylus C85/C86
-	Stylus CX4500/CX4600
-	Stylus CX5300/CX5400
-	Stylus CX6300/CX6400
-	Stylus CX6500/CX6600
-	Stylus Photo RX500/RX510
CC-600PX	Stylus CX5100/CX5200
CL-750	
CL-760	
PM-3500C	Stylus Photo 1280/1290/1290S
PM-3700C	-
PM-730C	Stylus Photo 820/820U
PM-740C	Stylus Photo 830

PM-740DU	Stylus Photo 830U
PM-780C	Stylus Photo 780
PM-780CS	
PM-790PT	
PM-830C	
PM-840C	
PM-850PT	Stylus Photo 925
PM-860PT	Stylus Photo 935
PM-870C	Stylus Photo 900
PM-880C	Stylus Photo 890
PM-890C	-
PM-930C	-
PM-940C	-
PM-970C*	-
PM-980C*	-
PM-A700	Stylus Photo RX420/RX425/RX430
PM-A850	Stylus Photo RX600
PM-A870	Stylus Photo RX620/RX630
PM-D1000	-
PM-D750	Stylus Photo R300
PM-D770	Stylus Photo R320
PM-G700	Stylus Photo R200/R210
PM-G720	-
PM-G800	-
PM-G820	-
PX-A550	Stylus CX3500/CX3600/CX3650
PX-G900	Stylus Photo R800
PX-G920	-
PX-V500	Stylus C63/C64
PX-V600	Stylus C83/84
PX-V700	Stylus C82
ESC/P-R printers	ESC/P-R printers

Table 1.2. Supported Inkjet Printers

\* These models utilize the 7-color mode for color printing. 4-color mode is not supported.

## 2. Release History

---

### 2005/07 Version 3.36b

1. This release now includes support for the following additional printer models:

**Japanese (“Epson”):** CC-600, PX-A550, PM-3500C, PM-A700, PM-A850, PM-A870, PM-D770, PM-D1000, PM-G720, PM-G820, PX-G920

**International (“Epson Stylus”):** C43SX/C44, C45/C46, C65/C66, C85/C86, CX3500/CX3600/CX3650, CX4500/CX4600, CX5100/CX5200, CX5300/CX5400, CX6300/CX6400, CX6500/CX6600

**International (“Epson Stylus Photo”):** 830, 830U, 935, 1280/1290/1290S, R210, R320, RX420/RX425/RX430, RX500/RX510, RX600, RX620/RX630

All future ESC/P-R printers will be officially supported after the models become available on the market.

If the driver is unable to get the device ID from the printer (i.e. parallel port or network printer), a dialog box will give notification of an ESC/P-R printer being connected. If the user selects “OK”, the driver will print the image using the ESC/P-R command set.

2. The color table for the PX-V500 inkjet printer has been changed.
3. All printers no longer display a dialog box before printing.

### 2004/10 Version 3.31.1b

1. Fixed the following bug from Version 3.31.1a:  
When a printer is connected to the parallel port of the target device, the “select printer” dialog box will appear. This error has been corrected.

### 2004/10 Version 3.31.1a

1. A new feature was added to suppress the select printer dialog box.  
See Section 3.5 for details.

### 2004/4 Version 3.31.1

2. The first release for the Pro-face series.

## 3. Driver Specification

---

### 3.1 Supported Paper Sizes

Normal printers typically support the following five paper sizes:

Paper Name	Dimensions	Supported By
A4	210 mm x 297 mm	All Printers Models
B5	182 mm x 257 mm	All Printers Models
Letter	8½" x 11"	All Printers Models
Legal	8½" x 14"	All Printers Models
Japanese Postcard ("Hagaki")	100 mm x 148 mm	Japanese Models Only

Table 3.1. Supported Papers

Theoretically, a new-model ESC/P-R printer can utilize any paper size that the printer supports (i.e. 4x6, 2L, business card, etc.); however, the device driver is often customized for various applications, so the ESC/P-R printer will often have its paper size capabilities limited.

### 3.2 Margins

#### 3.2.1. Non-Borderless Print Mode

In non-borderless print mode, Epson printers support the following minimum margin sizes:

Margin	3 mm / 4-side supported models	Older models
Top	3 mm	3 mm
Bottom	3 mm	<b>14 mm</b>
Left	3 mm	3 mm
Right	3 mm	3 mm

Table 3.2.1.1. Non-borderless minimum margin size

Newer Epson printers are capable of supporting 3 mm borders on all four sides of the page. The following printers support this mode:

Japanese Models	International Models
PM-A870	Stylus Photo RX620/RX630
PM-A850	Stylus Photo RX600

PM-A700	Stylus Photo RX420/RX425/RX430
	Stylus CX4500/CX4600
PM-A550	Stylus CX3500/CX3600/CX3650
-	Stylus Photo RX500/RX510
PM-D1000	-
PM-D770	Stylus Photo R320
PM-D750	Stylus Photo R300
PM-G820	-
PM-G800	-
PM-G720	-
PM-G700	Stylus Photo R200/R210
PX-G920	-
PX-G900	Stylus Photo R800
-	Stylus C85/C86
PX-V600	Stylus C83/C84
-	Stylus C65/C66
PX-V500	Stylus C63/C64
ESC/P-R printers	ESC/P-R printers

Table 3.2.1.2. 3 mm / 4-side supported printer models

### 3.3 Supported Paper Types

This device driver supports only plain paper for all inkjet printers.

### 3.4 Print Modes and Resolutions (Plain Paper)

PX-V700, Stylus C82

Print Mode	Output Resolution	Dot Size	Print Direction
Normal	360 x 360 dpi	Variable	Unidirectional
Draft	360 x 180 dpi	Variable	Unidirectional

PM-930C, PM-940C, PM-970C, PM-980C

Print Mode	Output Resolution	Dot Size	Print Direction
Normal	720 x 360 dpi	Variable	Unidirectional
Draft	720 x 360 dpi	Fixed	Unidirectional



PX-G900, PX-G920, Stylus Photo R800

Print Mode	Output Resolution	Dot Size	Print Direction
Normal	720 x 360 dpi	Variable	Unidirectional
Draft	720 x 360 dpi	Variable	Bidirectional

PM-D1000, PM-G800, PM-G820

Print Mode	Output Resolution	Dot Size	Print Direction
Normal	360 x 720 dpi	Variable	Unidirectional
Draft	360 x 360 dpi	Variable	Bidirectional

PM-3500C, PM-3700C, PM-880C, Stylus C45/C46, Stylus Photo 890,  
Stylus Photo 1280/1290/1290S

Print Mode	Output Resolution	Dot Size	Print Direction
Normal	360 x 360 dpi	Variable	Unidirectional
Draft	360 x 360 dpi	Fixed	Bidirectional

CL-750, CL-760, PM-730C, PM-740C, PM-740DU, PM-780C, PM-780CS, PM-790PT, PM-830C  
PM-840C, PM-850PT, PM-860PT, PM-870C, PM-890C  
Stylus C40, Stylus C42, Stylus C43SX/C44, Stylus Photo 820/820U, Stylus Photo 830  
Stylus Photo 830U, Stylus Photo 780, Stylus Photo 925, Stylus Photo 935, Stylus Photo 900

Print Mode	Output Resolution	Dot Size	Print Direction
Normal	360 x 360 dpi	Variable	Unidirectional
Draft	360 x 360 dpi	Fixed	Unidirectional

ESC/P-R

Print Mode	Output Resolution	Dot Size	Print Direction
Draft / Normal	Varies by printer model		

All Other Printers

Print Mode	Output Resolution	Dot Size	Print Direction
Normal	360 x 360 dpi	Variable	Unidirectional
Draft	360 x 360 dpi	Variable	Bidirectional

### 3.5 Memory Requirements (A4 Paper Size)

PM-970C, PM-980C

	<b>Memory Usage (KB)</b>	<b>Print Mode</b>
Maximum	991	Normal
Minimum	583	Draft

PM-930C, PM-940C

	<b>Memory Usage (KB)</b>	<b>Print Mode</b>
Maximum	2034	Normal
Minimum	1104	Draft

CL-750, CL-760, Stylus C40, Stylus C42

	<b>Memory Usage (KB)</b>	<b>Print Mode</b>
Maximum	423	Normal
Minimum	237	Draft

Stylus CC44/43SX, Stylus C46/ C45

	<b>Memory Usage (KB)</b>	<b>Print Mode</b>
Maximum	908	Normal
Minimum	432	Draft

PX-V500, Stylus C63/C64

	<b>Memory Usage (KB)</b>	<b>Print Mode</b>
Maximum	665	Normal
Minimum	657	Draft

PX-V600, Stylus C65/C66, Stylus C83/C84, C85/C86

	<b>Memory Usage (KB)</b>	<b>Print Mode</b>
Maximum	916	Normal
Minimum	908	Draft

PX-G900, PX-G920, Stylus Photo R800

	<b>Memory Usage (KB)</b>	<b>Print Mode</b>
Maximum	1301	Normal
Minimum	1293	Draft

PX-V700, Stylus C82

	<b>Memory Usage (KB)</b>	<b>Print Mode</b>
Maximum	889	Normal
Minimum	529	Draft

PM-880C, PM-3500C, PM-3700C, Stylus Photo 890, Stylus Photo 1280/1290/1290S

	<b>Memory Usage (KB)</b>	<b>Print Mode</b>
Maximum	1309	Normal
Minimum	1301	Draft

CC-600PX, Stylus CX5100/CX5200, Stylus CX5300/CX5400, Stylus CX6300/CX6400  
Stylus CX6500/CX6600

	<b>Memory Usage (KB)</b>	<b>Print Mode</b>
Maximum	908	Normal
Minimum	900	Draft

PX-A550, PM-A700, Stylus Photo 420/430, Stylus CX3650/CX3600/CX3500  
Stylus CX4500/CX4600,

	<b>Memory Usage (KB)</b>	<b>Print Mode</b>
Maximum	798	Normal
Minimum	790	Draft

PM-D1000

	<b>Memory Usage (KB)</b>	<b>Print Mode</b>
Maximum	1148	Normal
Minimum	1135	Draft

PM-G820, PM-G800

	<b>Memory Usage (KB)</b>	<b>Print Mode</b>
Maximum	1205	Normal
Minimum	1199	Draft

PM-A850, PM-A870, PM-D750, PM-D770, PM-G700, PM-G720  
Stylus Photo RX620/RX630, Stylus Photo RX600, Stylus Photo RX500/RX510  
Stylus Photo R300, Stylus Photo R320, Stylus Photo R200/R210

	<b>Memory Usage (KB)</b>	<b>Print Mode</b>
Maximum	1135	Normal
Minimum	1127	Draft

ESC/P-R

	<b>Memory Usage (KB)</b>	<b>Print Mode</b>
All	28	All

All Other Printers

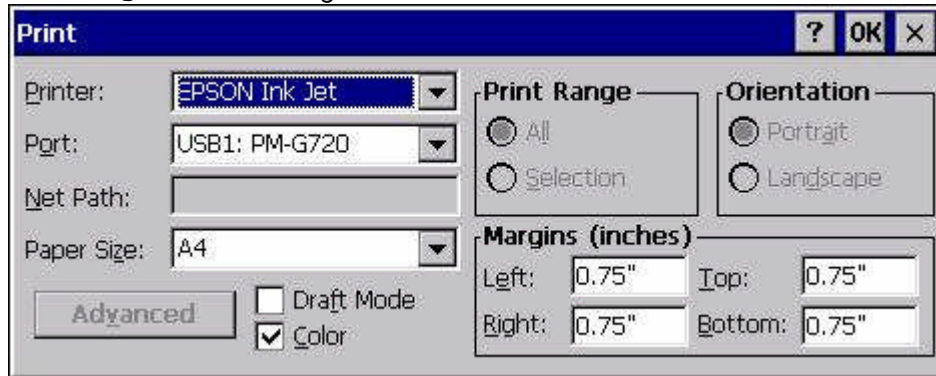
	<b>Memory Usage (KB)</b>	<b>Print Mode</b>
Maximum	772	Normal
Minimum	432	Draft

### 3.5 Dialog Boxes

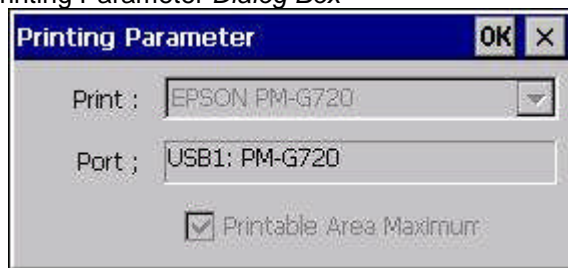
#### 3.5.1 Notification Dialog Box

The printer driver can typically display three different dialog boxes for user input and notification (Japanese versions shown for reference).

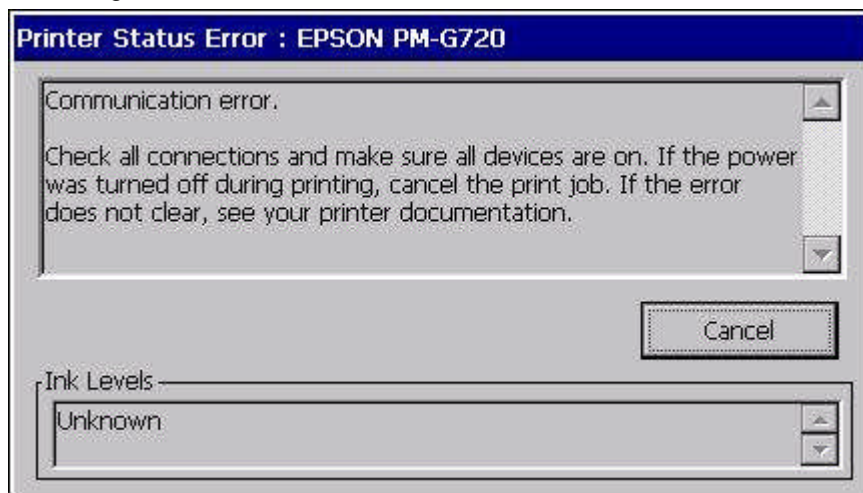
PrintDlg Common Dialog Box



Printing Parameter Dialog Box



Error Dialog Box



### 3.5.2 Device Contexts

In a typical application, the `PrintDlg` common dialog box is typically used in order to automatically create the device context. However, if the developer chooses to manually create the device context, the `PrintDlg` dialog box will not prompt the user to select a printing device. This is typically accomplished by calling the `CreateDC()` function (see Appendix A for sample code). Furthermore, if this function is called, print job settings (i.e. paper size, paper type, color mode) must be manually set in the system registry (see Appendix B for system registry details).

### 3.5.5 UISuppress

Typically, after printing, the “Printing Parameter” dialog box will prompt the user for confirmation of the print settings. However, this dialog box may be hidden using the `UISuppress` registry entry. The details of the registry entry are as follows:

Parameter	Value
Location	HKEY_LOCAL_MACHINE\Printers\EPSON Ink Jet
Name	UISuppress
Type	DWORD
Value	1 to suppress, otherwise use any other value

Table 3.5.5. `UISuppress` Registry Entry

It must be noted that the `UISuppress` feature will not hide the “Printing Parameters” dialog box if a new printer is connected for the first time. However, for all subsequent print jobs, the `UISuppress` feature will function normally. The actions of the `UISuppress` feature are as follows

Device Context Creation Mode	<code>UISuppress On</code>	<code>UISuppress Off</code>
<code>PrintDlg</code> common dialog box	Values taken from registry.*	Values taken from <code>PrintDlg</code> common dialog box.
<code>CreateDC()</code> function (manual)	Values taken from registry.	<code>DEVMODE</code> data structure is used to set the print job configuration.*

Table 3.5.5. `UISuppress` Effect on Print Job Configuration

\* These settings work, but are typically not used.

### 3.5.6 Bypassing the Standard Error Dialog Box

To bypass the standard Epson error dialog box, the application must implement a callback function in order to accommodate error handling. Details of this procedure are located in Appendix C.

## 4. Included Files

---

The following files are included with a standard device driver package:

### DLL Libraries

EPERLC.dll	Printer Driver
EPESCPR104.dll	Printer Driver
EPSTME2.dll	Port Monitor
EPPORTE4.dll	Port Monitor
EPUCNZE0.dll	Utility Library
EPUCCLE0.dll	Utility Library
EPUCSTE2.dll	Utility Library
EPUSBCP1.dll	USB Printer Class Driver
EPUSBST.dll	USB Class Driver

### Executables

EPERL3.exe	Printer Driver
EPUCCEE1.exe	Printer Utility

### Other Files

EPERLJRM.txt	Readme (Japanese)
EPERLERM.txt	Readme (English)

## 5. Installation Instructions

---

Two installation methods are available for the Epson inkjet printer device driver.

- Ensure that the target device is not connected to a printer.
- Please uninstall any previous versions of the device driver before installation. If this is not done, unnecessary files may remain on the system.

### 5.1 Method 1: CAB File Installation

1. Copy the cabinet (.cab) file to any location on the target device.
2. Install the driver by tapping twice on the .cab file. An installation dialog box will launch. Select OK.

### 5.2 Method 2: Manual Installation

1. Unzip the compressed ZIP archive to any location on a PC.
  2. Copy all files (other than the registry information files) to the Windows folder on the target device.
  3. Update the registry on the target device.
- Restarting the device is not necessary after installation.



## 6. Uninstallation Instructions

---

Two uninstallation methods are available for the Epson inkjet printer device driver.

- Ensure that the target device is not connected to a printer.

### 5.1 Method 1: If the driver was installed using the CAB file

1. In the Control Panel, click the "Remove Programs" icon.
2. The "Remove Programs Properties" dialog box appears. Select the "EPSON Ink Jet Printer" entry and click the "Remove" button.
3. The "Confirm File Deletion" message box appears. Click the Next button.

### 5.2 Method 2: If the driver was installed manually

1. Delete all driver files copied to the "%Windows" folder.  
(Refer to "Included Files" for the file list.)
  2. By referring to the registry file used at installation, delete all driver-related entries from the system registry.
- Restarting the device is not necessary after uninstallation.

## 7. Application Notes

---

1. Additional implementation details (regarding printing procedure and utilities) are located in the Readme file included with the device driver. Please read this file before installation.
2. If the operating system cannot allocate enough memory to accommodate the size of the image bitmap being printed, the print process will terminate. Therefore, it is crucial to allocate a sufficient amount of memory for printing prior to running the device driver.
3. Adjusting the color depth will reduce memory usage. The device driver typically defaults to 24 bits per pixel (BPP). However, the device driver supports low-color 8 BPP and 16 BPP modes in addition to the default 24 BPP mode. The color depth can be changed in the following system registry entry:

Parameter	Value
Location	HKEY_LOCAL_MACHINE¥Printers¥EPSON Ink Jet
Name	BPP
Type	DWORD
Value	8 BPP mode: 8 decimal (8 hex) 16 BPP mode: 16 decimal (10 hex) 24 BPP mode: All other values

Table 7.1. BPP Registry Entry

4. If printing from Internet Explorer, the paper size defined in IE must be identical to the paper size defined in the “printing settings” dialog box. If these paper sizes are different, unpredictable printing may occur.
5. The `PrintDlg` common dialog box displayed in Internet Explorer specifies the page margins in millimeters, which is incorrect. The correct description should read “centimeters”.
6. When an unsupported Epson printer is connected to the device, and the user is prompted to choose a printer that most closely matches the unsupported model, please contact Seiko Epson for support information.

## Appendix A. Creating A Printer Device Context

---

The `CreateDC()` function is used in order to create a printer device context without calling the `PrintDlg` function. The `CreateDC()` function accepts the following four parameters:

```
HDC CreateDC( LPCTSTR lpszDriver, LPCTSTR lpszDevice,
              LPCTSTR lpszOutput, CONST DEVMODE *lpInitData );
```

Argument	Description
<code>lpszDriver</code>	File name of the printer device driver DLL
<code>lpszDevice</code>	Device name (may be null)
<code>lpszOutput</code>	Port name
<code>*lpInitData</code>	A pointer to the device initialization structure (of type <code>DEVMODE</code> ).

Table A.1. `CreateDC` function arguments

Typically, the print job settings are obtained from the `PrintDlg` function at print-time. However, since a device context is only created when the `UISuppress` feature is on, the `CreateDC()` function requires that a `lpInitData` data structure be provided as a parameter. However, the `lpInitData` structure will always be overridden by the job parameters found in the system registry. The `DEVMODE` data structure is defined as follows:

```
typedef struct_devicemode {
    WCHAR dmDeviceName[CCHDeviceName];
    WORD dmSize;
    short dmOrientation;
    short dmPaperSize;
    short dmPaperLength;
    short dmPaperWidth;
    short dmSacle;
    short dmCopies;
    short dmPrintQuality;
    short dmColor;
} DEVMODE;
```

The following two members must be defined. The system registry always overrides the remaining members.

Member	Description
<code>WCHAR dmDeviceName[CCHDeviceName]</code>	Driver name (must be identical to the name found in the system registry)
<code>WORD dmSize</code>	<code>DEVMODE</code> structure size (typically obtained by calling the <code>sizeof(DEVMODE)</code> function).

Table A.2. Mandatory `lpinitData` members

### Sample Code – Creating a Device Context

```
DEVMODE InitData;  
wsprintf(InitData, dmDeviceName, L"%s", TEXT("EPSON Ink Jet"));  
InitData.dmSize = sizeof(DEVMODE);  
HDC hPrinterDC = CreateDC(  
    TEXT("EPERLC"),        // driver DLL filename  
    NULL,                  // not used (set to NULL)  
    TEXT("USB1:"),        // port name  
    &InitData  
);
```

## Appendix B. Registry-Stored Print Job Settings

---

If the `CreatedC()` function is used, it is necessary to set the following print job data in the system registry:

Location			
HKEY_LOCAL_MACHINE\Printers\EPSON Ink Jet			
Name	Type	Value (Decimal)	Description
<b>PaperSize</b>	DWORD	9 (default)	A4
		13	B5
		263	Hagaki (Japanese Postcard)
		1	Letter
		5	Legal
<b>PaperMedia</b>	DWORD	0 (default)	Plain Paper
<b>PrintColor</b>	DWORD	2 (default)	Color
		1	Monochrome
<b>PrintOrientation</b>	DWORD	1 (default)	Portrait
		2	Landscape
<b>PrintQuality</b>	DWORD	-4 (default)	Normal
		-1	Draft
<b>Print Area</b>	DWORD	1 (default)	3 mm / 4-side margins
		0	3 mm / 3-side & 14 mm bottom margin
<b>BPP</b>	DWORD	24 (default)	24 bits per pixel
		16	16 bits per pixel
		8	8 bits per pixel

Table B.1. Print Job Registry Settings

1. If a registry key is set to an undefined value, or the registry key does not exist, the driver will default to the values listed in the above table.
2. If a non-Japanese printer is connected and “Japanese Postcard” (263) is set as the paper size, the driver will default to A4 size.
3. If a printer which does not support 3 mm / 4-side margins is connected, the driver will automatically print using 3 mm / 3-side & 14 mm bottom margins. See Table 3.2.1.2 for a list of supported printers.

## Appendix C. Callback Function (Error Handling)

---

In order to process error events, a DLL must be configured which exports the following functions:

```
BOOL ReportPrinterStatus( DWORD dwError,  
                          LPCTSTR lpPortName, LPCTSTR lpPrinterName );
```

Argument	Description
dwError	Error Type
lpPortName	Port Name
lpPrinterName	Printer Name

Table C.1. ReportPrinterStatus function arguments

Return Value	Description
TRUE	Retry print job.
FALSE	Cancel print job.

Table C.2. ReportPrinterStatus return values

This function is the means by which the driver reports an error at the time of error generation. The return value of the function indicates whether continuation or discontinuation of printing should be done. The user must be notified of all errors. Information regarding error causes can be found in Appendix D; sample error messages are detailed in Appendix E.

Registering the DLL with the device driver is accomplished with the following registry key:

Parameter	Value
Location	HKEY_LOCAL_MACHINE\Software\EPSON\Utility\ETDriver
Name	NTFYDLL
Type	String
Value	DLL filename (do not include path and file extension)

Table C.3. NTFYDLL Registry Entry

## Appendix D. Error Causes and Print Job Severity

Error Code	Severity	Description
EPR_NTIFY_FATAL	Fatal	A fatal error has occurred.
EPR_NTIFY_COMM	Fatal	The device has lost connectivity with the printer.
EPR_NTIFY_SERVICEREQ	Fatal	The printer's inkpad has become fully saturated.
EPR_NTIFY_BUSY	Fatal	The printer is currently in use (direct printing is taking place from other interfaces, such as the memory card).
EPR_NTIFY_PAPERJAM	Fatal	Paper jam.
EPR_NTIFY_HCINK	Fatal	Not enough ink to support head cleaning.
EPR_NTIFY_INKEND*	Recoverable	Ink cartridge empty.
EPR_NTIFY_CFAIL*	Recoverable	Ink cartridge cannot be recognized.
EPR_NTIFY_COPEN	Recoverable	Cartridge cover open.
EPR_NTIFY_CEMPTY*	Recoverable	No ink cartridge present
EPR_NTIFY_INKSET	Recoverable	Improper ink cartridge inserted.
EPR_NTIFY_PAPEREND	Recoverable	Out of paper. If the print job is restarted, the printer will automatically feed the new paper.
EPR_NTIFY_PAPERENDB	Recoverable	Out of paper. If the print job is restarted, the printer will not automatically feed (a switch may have to be manually set, etc.) (Not all models)
EPR_NTIFY_FACTORY	Recoverable	The printer is still in factory default state and the ink cartridges are not set.
EPR_NTIFY_CARTRIDGE_OVERFLOW	Recoverable	A cartridge with a built-in waste fluid tank is overflowing. (Not all models)
EPR_NTIFY_OVERHEAT	Recoverable	The printer is overheating. Print speed is automatically reduced. (Not all models)
EPR_NTIFY_TRAYCLOSED	Recoverable	The paper output tray is closed. (Not all models)
EPR_NTIFY_GENERAL	Recoverable	Printer-specific error. Error message may be displayed on the printer front panel, if available. (Not all models)

Table D.1. Printer Errors

## Appendix E. Sample Error Messages

---

Several error messages are color-dependent, specified by “XX” in the error name. The color codes for the various ink cartridges are:

<b>Color Code</b>	<b>Color Name</b>
CY	Cyan
MA	Magenta
YL	Yellow
LC	Light Cyan
LM	Light Magenta
LY	Light Yellow
DY	Dark Yellow
B2	Black 2
GR	Gray
RD	Red
BL	Blue
MB	Matte Black
PB	Photo Black
GO	Gross Optimizer

Table E.1. Color Codes



<b>Notification Code</b>	<b>Recommended Message</b>	<b>Button</b>
EPR_NTIFY_FATAL	General error. Turn the printer off. Remove any foreign objects from inside the printer. After a few minutes, turn the printer back on.	Cancel
EPR_NTIFY_GENERAL	General error. Confirm the printer status.	Continue Cancel
EPR_NTIFY_COMM	Communication error. Check all connections and make sure all devices are on. If you disconnect during printing, turn the printer off for at least 10 seconds before turning it back on. If the error does not clear, see your printer documentation. Or, connected printer is not supported.	Cancel
EPR_NTIFY_SERVICE REQ	Service required. Parts inside your printer are at the end of their service life. See your printer documentation.	Cancel
EPR_NTIFY_INKENDAL L	Ink out. Replace the ink cartridge. The genuine EPSON ink cartridges are recommended for replacement. When the ink cartridges are changed, select "Continue" or "Cancel" after the printer movement is completed.	Continue Cancel
EPR_NTIFY_INKENDB	Ink out. Replace the black ink cartridge. The genuine EPSON ink cartridges are recommended for replacement. When the ink cartridges are changed, select "Continue" or "Cancel" after the printer movement is completed.	Continue Cancel
EPR_NTIFY_INKENDC	Ink out. Replace the color ink cartridge. The genuine EPSON ink cartridges are recommended for replacement. When the ink cartridges are changed, select "Continue" or "Cancel" after the printer movement is completed.	Continue Cancel
EPR_NTIFY_INKENDB C	Black and color inks out. Replace the black and color ink cartridges. The genuine EPSON ink cartridges are recommended for replacement. When the ink cartridges are changed, select "Continue" or "Cancel" after the printer movement is completed.	Continue Cancel
EPR_NTIFY_INKENDX X	Ink out. Replace the XX ink cartridge. The genuine EPSON ink cartridges are recommended for replacement. When the ink cartridges are changed, select "Continue" or "Cancel" after the printer movement is completed.	Continue Cancel

EPR_NTIFY_INKENDUK	Ink out. Replace the ink cartridge. The genuine EPSON ink cartridges are recommended for replacement. When the ink cartridges are changed, select "Continue" or "Cancel" after the printer movement is completed.	Continue Cancel
EPR_NTIFY_CARTRIDGEOVERFLOW	Ink cartridge at end of service life. The ink cartridge must be replaced because the internal pad that absorbs ink during head cleaning has become saturated. Replace the ink cartridge. The genuine EPSON ink cartridges are recommended for replacement. When the ink cartridges are changed, select "Continue" or "Cancel" after the printer movement is completed.	Continue Cancel
EPR_NTIFY_COPEN	Ink cartridge cover open. Close the ink cartridge cover.	Continue Cancel
EPR_NTIFY_CFAILALL	The installed ink cartridge cannot be recognized. Replace the ink cartridge. The genuine EPSON ink cartridges are recommended for replacement. When the ink cartridges are changed, select "Continue" or "Cancel" after the printer movement is completed.	Continue Cancel
EPR_NTIFY_CFAILB	The installed ink cartridge cannot be recognized. Replace the black ink cartridge. The genuine EPSON ink cartridges are recommended for replacement. When the ink cartridges are changed, select "Continue" or "Cancel" after the printer movement is completed.	Continue Cancel
EPR_NTIFY_CFAILC	The installed ink cartridge cannot be recognized. Replace the color ink cartridge. The genuine EPSON ink cartridges are recommended for replacement. When the ink cartridges are changed, select "Continue" or "Cancel" after the printer movement is completed.	Continue Cancel
EPR_NTIFY_CFAILBC	The installed ink cartridges cannot be recognized. Replace the black and color ink cartridge. The genuine EPSON ink cartridges are recommended for replacement. When the ink cartridges are changed, select "Continue" or "Cancel" after the printer movement is completed.	Continue Cancel
EPR_NTIFY_CFAILXX	The installed ink cartridge cannot be recognized. Replace the XX ink cartridge. The genuine EPSON ink cartridges are recommended for replacement. When the ink cartridges are changed, select "Continue" or "Cancel" after the printer movement is completed.	Continue Cancel
EPR_NTIFY_CFAILUK	The installed ink cartridge cannot be recognized. Replace the ink cartridge. The genuine EPSON ink cartridges are recommended for replacement. When the ink cartridges are changed, select "Continue" or "Cancel" after the printer movement is completed.	Continue Cancel

EPR_NTFY_INKSET	Incompatible combination of ink cartridges installed Non-Standard combination not supported. Replace the current ink cartridge with the correct ink combination. The genuine EPSON ink cartridges are recommended for replacement. When the ink cartridges are changed, select "Continue" or "Cancel" after the printer movement is completed.	Continue Cancel
EPR_NTFY_CEMPTYALL	Ink cartridge not correctly installed. Replace the ink cartridge. . The genuine EPSON ink cartridges are recommended for replacement. When the ink cartridges are changed, select "Continue" or "Cancel" after the printer movement is completed.	Continue Cancel
EPR_NTFY_CEMPTYB	Black ink cartridge not correctly installed. Replace the black ink cartridge. The genuine EPSON ink cartridges are recommended for replacement. When the ink cartridges are changed, select "Continue" or "Cancel" after the printer movement is completed.	Continue Cancel
EPR_NTFY_CEMPTYC	Color ink cartridge not correctly installed. Replace the color ink cartridge. The genuine EPSON ink cartridges are recommended for replacement. When the ink cartridges are changed, select "Continue" or "Cancel" after the printer movement is completed.	Continue Cancel
EPR_NTFY_CEMPTYC	Black and color ink cartridges not correctly installed. Replace the black and color ink cartridge. The genuine EPSON ink cartridges are recommended for replacement. When the ink cartridges are changed, select "Continue" or "Cancel" after the printer movement is completed.	Continue Cancel
EPR_NTFY_CEMPTYYX	Ink cartridge not correctly installed. Replace the XX ink cartridge. The genuine EPSON ink cartridges are recommended for replacement. When the ink cartridges are changed, select "Continue" or "Cancel" after the printer movement is completed.	Continue Cancel
EPR_NTFY_CEMPTYYUK	Ink cartridge not correctly installed. Replace the ink cartridge. The genuine EPSON ink cartridges are recommended for replacement. When the ink cartridges are changed, select "Continue" or "Cancel" after the printer movement is completed.	Continue Cancel
EPR_NTFY_PAPEREND	Paper not loaded correctly. Set the paper correctly and press the paper button (or maintenance button) on the printer or push the Continue button.	Continue Cancel
EPR_NTFY_PAPERENDB	Paper not loaded correctly. Set the paper correctly and press the feed button on the printer.	Continue Cancel

EPR_NTIFY_PAPERJAM	Paper jam Remove any remaining jammed paper by hand.	Cancel
EPR_NTIFY_BUSY	Printer busy Please wait.	Cancel
EPR_NTIFY_HCINK	Not enough ink to start requested operation.	Cancel
EPR_NTIFY_FACTORY	Ink cartridges cannot be recognized. Replace the ink cartridge. The genuine EPSON ink cartridges are recommended for replacement. When the ink cartridges are changed, select "Continue" or "Cancel" after the printer movement is completed.	Continue Cancel
EPR_NTIFY_OVERHEAT	The printer temperature is high, so printing is at low speed. See your printer documentation for detailed information.	Continue Cancel
EPR_NTIFY_TRAYCLOSED	The output tray is closed. Open the output tray.	Continue Cancel