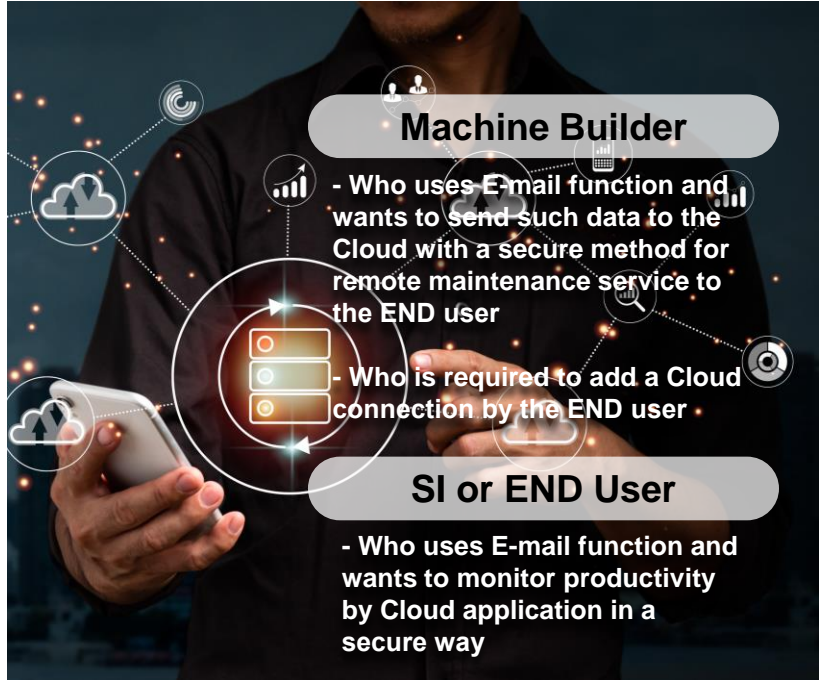


**Pro-face**<sup>TM</sup>

by **Schneider Electric**



**HMI with Node-RED + Cloud**



**Machine Builder**

- Who uses E-mail function and wants to send such data to the Cloud with a secure method for remote maintenance service to the END user

- Who is required to add a Cloud connection by the END user

**SI or END User**

- Who uses E-mail function and wants to monitor productivity by Cloud application in a secure way

**Empower Your Operations with Secure Cloud Data Upload**

**Secure Data Communication**

Your critical data with a secure protocol that ensures seamless communication with the Cloud. Node-RED offers a reliable and secure pathway to upload data, maintaining a secure environment within your facility.

**Utilization of Data**

Access and analyze data effortlessly, empowering multiple stakeholders to utilize received data through intuitive dashboards. Gain insights and make informed decisions based on comprehensive data analysis.

**Easy Start-up with Low Cost**

Seamlessly collect HMI logging data to the Cloud with minimal setup and low cost. Leverage the standard GP-Pro EX feature to collect HMI logging data via email and effortlessly transmit this data to the Cloud using Node-RED.



**Collaborative System**

- High Flexibility -

**Products List**

**Pro-face**

**3<sup>rd</sup> Party**



plus



ST6000

PS6000

GP-Pro EX

Node-RED

AWS (Amazon)

[Go to Web](#)

[Go to Web](#)

Ver.4.09.100 or later

SP5000

GP4000

[Go to Web](#)

[Go to Web](#)

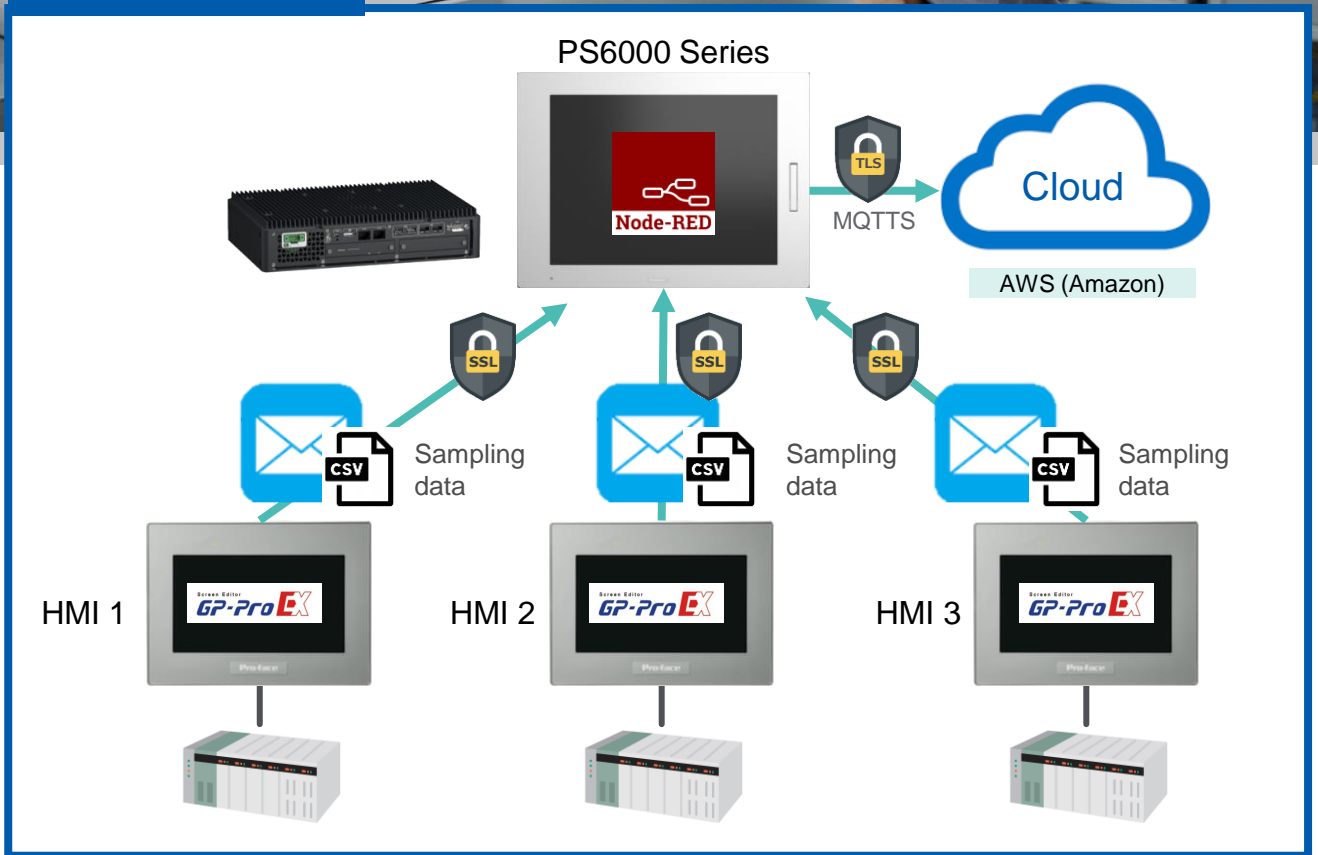
[Go to Web](#)

# How does it work



- 1 Send email from HMI to mail server
- 2 Read unread emails every 1 min on Node-RED  
(After sending to the Node-RED, emails change from unread to read. Only unread emails are sent.)
- 3 Convert the data in the email file received on the Node-RED side to JSON that can be recognized by AWS.
- 4 Send the converted data to AWS via MQTTS.

## Structure



\*Operation is not guaranteed in all environments.

**Pro-face**  
by Schneider Electric

Visit our website for more information.  
[www.proface.com](http://www.proface.com)



Contact Us (Worldwide Pro-face)  
<https://www.proface.com/en/contact>

Pro-face provides the HMI Specialist service & support certainty around the world.  
<https://www.proface.com/en/solution/video/specialist>



# HMI Centric Architecture

[Go to Web](#)

