



All-in-one solution

for saving space and boosting engineering efficiency

Basic HMI + Control: STC6000 Series



+



proface.com

Pro-faceTM
by Schneider Electric

Connect your systems effortlessly and streamline your architecture with the STC6000.

Say goodbye to complex setups and hello to simplified integration. Save valuable time and resources while achieving optimal performance.

Sink / Source STC6000 Series  5.7" / VGA 262K colors	Built-in I/O	DIO Inputs : 16 High-Speed Counter / Pulse Catch Input Pulse / PWM Output Outputs : 16 •Single phase (4-point) •2 phase (1-point or 2-point) 4-point
	 Rear mounting	TM3  TM3 (Max 2 units)
	 Extension mounting	TM3  Max.5m Transmitter (TM3XTRA1) Receiver (TM3XREC1) TM3 (Max 8 units)
	EtherNet/IP	EtherNet/IP Scanner  TM3BC  (Max 32 adapters) 3rd Party Devices (Max 32 adapters)

Refined

Attractive aesthetics

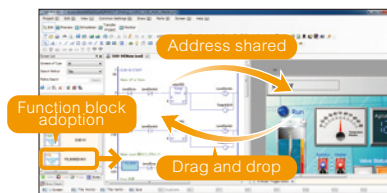
Manufacturing simple machines also requires attractive aesthetics and visualization. The metal frame gives the product a high-grade finish.



Simple & Easy

Engineering Time Saver

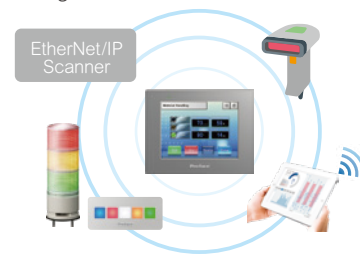
Screens and logic programs can be edited with the same software, and the same addresses or user-defined control symbols can be shared for screen parts and logic elements with drag-and-drop operation.



Connected & Secured

The Power of Expandability

High connectivity with rich interfaces and user-friendly protocols allowing you to connect various devices with ease. Strong support for OT – IT integration and remote maintenance.



STC-6300TA	
Model No	Digital output sink type: PFXSTC6300TADDKE Digital output source type: PFXSTC6300TADDCE
Display	5.7" (VGA) / 262K colors / Resistive film (analog)
Interface	RS-232C / 422 / 485 (D-Sub 9 pin) x 1 Ethernet1 IEEE802.3i / IEEE802.3u, 10BASE-T / 100BASE-TX x 1 USB host type A x 1, USB device Micro B x 1, DIO interface x 1, Expansion module interface x 1
Built-in I/O	DIO: Inputs : 16 / Outputs: 16 High-Speed Counter / Pulse Catch Input : Single phase (4-point) / 2 phase (1-point or 2-point) Pulse / PWM Output: 4-point
External I/O	Rear mounting: Modicon TM3 Module: Max 2 units Extension mounting: Modicon TM3 Module: Max 8 units *Required Transmitter (TM3XTRA1) and Receiver (TM3XREC1)

[proface.com](https://www.proface.com)

For more details information and Manuals, Certification, and related software to download.
https://www.proface.com/en/product/hmi_control/stc6000/top

Contact Us (Worldwide Pro-face)
<https://www.proface.com/en/contact>

©2024 Schneider Electric Japan Holdings Ltd. All Rights Reserved.
 HMI_STC6000_Leaflet_EN_10

