

3112T-PDWS Pro-Designer™ Workstations

DS-380030(B)



FEATURES

- 12.1" TFT SVGA (800x600) flat panel color display
- Analog resistive touchscreen
- Preloaded with Pro-face Pro-Designer HMI Runtime software
- Intel® Socket 370 Celeron® 1.2 GHz CPU, 256 KB cache, 100 MHz system bus
- 256 MB SDRAM
- AGP graphics controller with BIOS-selectable video RAM up to 64 MB (uses DRAM)
- VGA port for remote monitor
- Supports using remote monitor and built-in display simultaneously
- Preloaded with Windows® 2000 operating system
- 20 GB internal hard drive
- Side accessible 1.44 MB floppy drive and CD-ROM drive
- Type I CompactFlash™ card slot
- Two RS-232 ports
- One configurable RS-232/422/485 port
- Two SPP/EPP/ECP parallel ports
- 10/100Base-T Ethernet
- Audio input/output/mic
- PS/2 keyboard/mouse port (Y-cable included)
- Mounted with mounting clips or standard 75/100 mm VESA arm
- Power cable and drivers included
- 100-240 V AC power supply
- NEMA 4/4X/12, IP65 front panel
- 1-year warranty

The 3112T-PDWS Pro-Designer Workstations (PDWS) offer an HMI (human machine interface) on a Light-Duty Industrial Open Computer platform. These units come pre-installed with Pro-Designer HMI Runtime software. The Pro-Designer Development Software (sold separately) lets you design simple or complex HMI applications to run on a variety of platforms. These workstations are able to communicate to various PLCs and other controllers by simply downloading one's application. The 3112T-PDWS open platform operator interfaces allow operators to display manuals, view Adobe® Acrobat PDFs, connect to plant networks or optionally serve screens to a remote PC using a browser.

Higher Performance

The 1.2 GHz Intel Celeron CPU drives the fastest and most demanding data collection HMI applications.

Pre-loaded Operating Systems

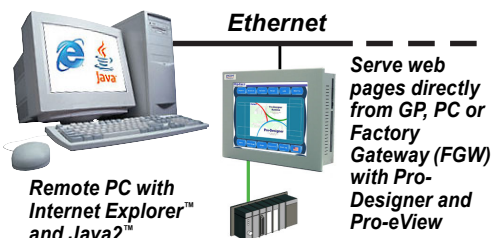
All 3112T-PDWS systems come standard with Windows 2000 pre-loaded.

Sharp, Easy-to-Read Displays

A bright 12" TFT screens can display complex operations with clarity.

Pro-eView Web-Enabled (Optional)

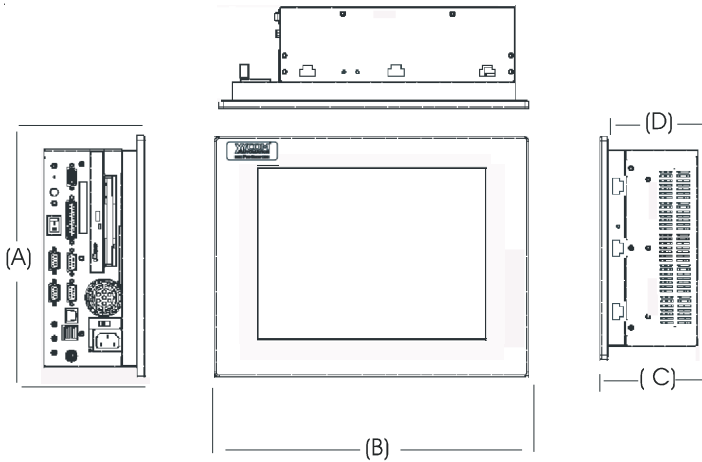
- Serve screens as web pages directly from Pro-Designer workstation.
- View your process anywhere you have internet connectivity.
- Individually select which HMI screens are published to the Internet.
- Various monitoring options available:
 - "monitor only" mode enabled or allow for remote screen variable changes.



PRODUCT CONFIGURATION

Model	3112T-PDWS
Display	12" LCD color display, 800 x 600 (SVGA)
Operator Input	Analog resistive touchscreen
Processors	Intel® Celeron
Preloaded OS	Windows® 2000

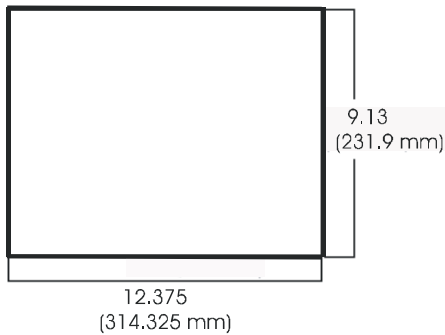
PRODUCT AND MOUNTING DIMENSIONS



3112T-PDWS Unit Dimensions

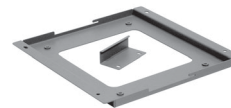
Height (A)	10.24" (260.0 mm)
Width (B)	13.39" (340.0 mm)
Depth (C)	4.25" (107.95 mm)
Mounting Depth (D)	3.90" (99.0 mm)
Weight	21 lbs (9.5 kg)

3112T-PDWS Mounting

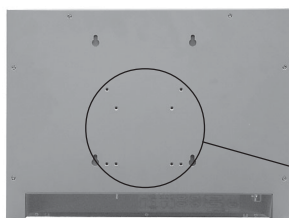


Mounting Options

The 3112T-PDWS are designed to be mounted directly into an equipment panel without requiring special mounting plates or brackets. It can also be mounted on a wall with the wall-mount adapter included in the mounting kit or it can be mounted on a standard 75/100 mm VESA swing or pendent arm. Both units are not NEMA rated if mounted outside of a panel.



Wall Mount Bracket



Wall Mount Pattern (x4)

75/100 mm VESA Arm

Panel Mounting Clips



PRODUCT SPECIFICATIONS AND RATINGS

All of the specifications are subject to change without notice.

Environmental

	Operating	Nonoperating
Thermal	0°C to 50°C (32° TO 122°F)	-20°C to 60°C (-4° to 140°F)
Humidity	20% to 80% RH, noncondensing	20% to 80% RH, noncondensing
Altitude	Sea level to 10,000 ft. (3,000 m)	Sea level to 40,000 ft. (12,000 m)

Electrical

3112T-PDWS

AC Power	100-240V AC 3.0 A (maximum) 88 W nominal ^a , 50/60 Hz
----------	------------------------------------------------------------------------

^a Nominal Power is measured for a base configuration only. Any additional expansion and/or devices will increase the input power required.

Regulatory Compliance

- CE
EN 55022, Class A
EN 6100-6-2
IEC 60950-1
EN 61000-3-2, Class A
EN 61000-3-3
- FCC (47 CFR, Part 15, Class A)

Safety Agency Approvals

- UL (UL 508) Listed
- cUL (CSA-C22.2, #142) Listed



Front Panel

- NEMA 4/4X/12

ORDERING INFORMATION

Choose an order number below:

Order Number	Description
3112T-PDWS	3112T Industrial PC with a Celeron 1.2 GHz CPU, 256 MB DRAM, 20 GB hard drive, 1.44 MB floppy drive, CD-ROM, Windows 2000 operating system, and pre-loaded with Pro-Designer Runtime software.
PS-DWE01-V42	Pro-Designer HMI Development software Version 4.2

Warranty Information

The 3112T-PDWS models carry a one-year parts & labor warranty.

Xycom Automation
750 North Maple Road
Saline, MI 48176

Phone: 734-429-4971
Fax: 734-429-1010
<http://www.xycom.com>

Customer Support Hotline:
734-944-0482



© 2005-2006 Xycom Automation. Specifications may change without notice.
Xycom Automation is a trademark of Xycom Automation. Other brand or product names are the property of their respective owners.



California Proposition 65 Warning—Lead and Lead Compounds

Advertencia de la Proposición 65 de California—Plomo y compuestos de plomo

Avertissement concernant la Proposition 65 de Californie—Plomb et composés de plomb

⚠ WARNING: This product can expose you to chemicals including lead and lead compounds, which are known to the State of California to cause cancer and birth defects or other reproductive harm. For more information go to: www.P65Warnings.ca.gov.

⚠ ADVERTENCIA: Este producto puede exponerle a químicos incluyendo plomo y compuestos de plomo, que es (son) conocido(s) por el Estado de California como causante(s) de cáncer y defectos de nacimiento u otros daños reproductivos. Para mayor información, visite : www.P65Warnings.ca.gov.

⚠ AVERTISSEMENT: Ce produit peut vous exposer à des agents chimiques, y compris plomb et composés de plomb, identifiés par l'État de Californie comme pouvant causer le cancer et des malformations congénitales ou autres troubles de l'appareil reproducteur. Pour de plus amples informations, prière de consulter: www.P65Warnings.ca.gov.

All trademarks are the property of Schneider Electric SE, its subsidiaries, and affiliated companies.

Schneider Electric USA, Inc.
800 Federal Street
Andover, MA 01810 USA
888-778-2733
www.schneider-electric.us

Todas las marcas comerciales son propiedad de Schneider Electric SE, sus filiales y compañías afiliadas.

Importado en México por:
Schneider Electric México, S.A. de C.V.
Av. Ejercito Nacional No. 904
Col. Palmas, Polanco 11560 México, D.F.
55-5804-5000
www.schneider-electric.com.mx

Toutes les marques commerciales sont la propriété de Schneider Electric SE, ses filiales et compagnies affiliées.

Schneider Electric Canada, Inc.
5985 McLaughlin Road
Mississauga, ON L5R 1B8 Canada
800-565-6699
www.schneider-electric.ca