

3115T Manual

**15" Thinline Industrial Flat
Panel PC**

Revision	Description	Date
A	Manual Released	4/02
B	Revision	8/03

Part Number 141876

Trademark Information

Brand or product names are registered trademarks of their respective owners.
Windows is a registered trademark of Microsoft Corp. in the United States and other countries.

Copyright Information

This document is copyrighted by Xycom Automation Incorporated (Xycom Automation) and shall not be reproduced or copied without expressed written authorization from Xycom Automation.

The information contained within this document is subject to change without notice. Xycom Automation does not guarantee the accuracy of the information.

United States FCC Part 15, Subpart B, Class A EMI Compliance Statement:

NOTE: This equipment has been tested and found to comply with the limits for a Class A digital device, pursuant to part 15 of the FCC Rules. These limits are designed to provide reasonable protection against harmful interference when the equipment is operated in a commercial environment. This equipment generates, uses, and can radiate radio frequency energy and, if not installed and used in accordance with the instruction manual, may cause harmful interference to radio communications. Operation of this equipment in a residential area is likely to cause harmful interference in which case the user will be required to correct the interference at his own expense.

For European Users - WARNING:

This is a Class A product. In a domestic environment this product may cause radio interference in which case the user may be required to take adequate measures.

INSTALLATION: Electromagnetic Compatibility WARNING:

The connection of non-shielded equipment interface cables to this equipment will invalidate FCC EMI and European Union EMC compliance and may result in electromagnetic interference and/or susceptibility levels which are in violation of regulations applying to the legal operation of this device. It is the responsibility of the system integrator and/or user to apply the following directions relating to installation and configuration:

All interface cables must include shielded cables. Braid/foil type shields are recommended. Communication cable connectors must be metal, ideally zinc die-cast backshell types, and provide 360 degree protection about the interface wires. The cable shield braid must be terminated directly to the metal connector shell, ground drain wires alone are not adequate.

Protective measures for power and interface cables as described within this manual must be applied. Do not leave cables connected to unused interfaces or disconnected at one end. Changes or modifications to this device not expressly approved by the manufacturer could void the user's authority to operate the equipment.

EMC compliance is, in part, a function of PCB design. Third party add-on AT/XT peripheral PCB assemblies installed within this apparatus may void EMC compliance. FCC/CE compliant PCB assemblies should always be used where possible. XYCOM AUTOMATION can accept no responsibility for the EMC performance of this apparatus after system integrator/user installation of PCB assemblies not manufactured and/or expressly tested and approved for compliance by XYCOM AUTOMATION. It is the responsibility of the system integrator/user to ensure that installation and operation of such devices does not void EMC compliance.

Table of Contents

CHAPTER 1 – PRODUCT INFORMATION	1
GENERAL INFORMATION	1
CPU Board	1
LCD Display	1
Power Supply	1
Touch Screen	1
HDD, FDD & CD-ROM	1
PRODUCT SPECIFICATIONS	2
Disk Drive Bays	2
LCD Display	2
Dynapro Touch Screen	2
Environmental Specifications	2
Power Supply	3
POS-370 CPU Board	3
MECHANICAL DIMENSIONS	4
SYSTEM SETUP	4
SYSTEM SETUP	5
Reverse Side of 3115T	5
Reverse Side of the Rear Cabinet	6
Side View of 3115T	6
Hard Disk Drive Installation/Removal	7
Panel Mounting	8
Wall Mounting	9
Arm Mounting	11
POS-370 MULTIMEDIA POS CONTROL BOARD	12
Product Overview	12
Specifications	12
POS-370 CPU Board Layout	14
POS-370 Dimensions	15
Setting the CPU of POS-370	16
CompactFlashDisk™ Flash Disk Setting	17
Clear CMOS Setup	18
LCD Panel Power Setup	18
LCD Panel Type Selection	19
COM2 RS-232/422/485 Selection	19
COM Port RI and Voltage Selection	20
IR Power Selection	22
USB Power Selection	22
Floppy Disk Drive Connector	23
PCI E-IDE Disk Drive Connector	24
Parallel Port	25
Serial Ports	26
Keyboard/Mouse Connector	29
External Switches and Indicators	30
USB Port Connector	31
IrDA Infrared Interface Port	31
VGA Connector	31
LAN RJ45 Connector	33
Fan Connector	33
LCD Backlight Connector	34
Home Networking Connector (Optional)	34
TV Out Connector (Optional)	34
Temperature Sensor Connector	34
LCD Panel Connector	35
Audio Line IN	35
Digital Input/Output	36
Audio Panel	37

Compact Flash Storage Card Socket	38
Audio SPK Output Connector	39
Chassis Intrusion Detection Connector.....	39
AT and ATX Power Connector.....	40
CHAPTER 2 – AWARD BIOS SETUP.....	43
STARTING SETUP	44
USING SETUP	45
GETTING HELP.....	46
MAIN MENU	46
Standard CMOS Features.....	47
Advanced BIOS Features	47
Advanced Chipset Features.....	47
Integrated Peripherals.....	47
Power Management Setup.....	47
PnP/PCI Configuration.....	47
PC Health Status	47
Frequency/Voltage Control.....	47
Load Fail-Safe Defaults	47
Load Optimized Defaults.....	47
Supervisor/User Password	48
Save & Exit Setup.....	48
Exit Without Save.....	48
STANDARD CMOS SETUP	49
Main Menu Selections.....	50
IDE Adapters.....	52
Advanced BIOS Features	53
Virus Warning	54
CPU Internal Cache/External Cache	54
CPU L2 Cache ECC Checking.....	55
Processor Number Feature.....	55
Quick Power On Self Test.....	55
First/Second/Third/Other Boot Device	55
Swap Floppy Drive.....	55
Boot Up Floppy Seek.....	55
Boot Up NumLock Status.....	55
Gate A20 Option	55
Typematic Rate Setting.....	56
Typematic Rate (Chars/Sec).....	56
Typematic Delay (Msec)	56
Security Option	57
OS Select For DRAM > 64MB.....	57
Report No FDD For Win 95.....	57
Video BIOS Shadow	57
ADVANCED CHIPSET FEATURES.....	58
Advanced DRAM Control 1/2 Settings.....	58
Auto Configuration	58
SDRAM RAS Active Time	59
SDRAM RAS Precharge Time	59
RAS to CAS Delay.....	59
Dram Background Command.....	59
LD-Off Dram RD/WR Cycles.....	59
Write Recovery Time	59
VCM REF To ACT/REF Delay	59
VCM ACCT To ACT/REF Delay.....	59
Early CKE Delay 1T Cntrl	60
Early CKE Delay Adjust.....	60
Mem Command Output Time.....	60
SDRAM/VCM CAS Latency	60
SDRCLK Control.....	60
SDWCLK Control CS#/CKE.....	60
SDWCLK Control MA/SRAS.....	60

<i>SDWCLK Control DQM/MD</i>	60
<i>EGMRCLK Control</i>	61
<i>EGMWCLK Control</i>	61
<i>System BIOS Cacheable</i>	61
<i>Video RAM Cacheable</i>	61
<i>Memory Hole at 15M-16M</i>	61
<i>AGP Aperture Size</i>	61
<i>Graphic Window WR Combin</i>	61
<i>Concurrent Function (MEM)</i>	62
<i>Concurrent Function (PCI)</i>	62
<i>CPU Pipeline Control</i>	62
<i>PCI Delay Transaction</i>	62
<i>Power-Supply Type</i>	63
<i>Memory Parity Check</i>	63
INTEGRATED PERIPHERALS	63
<i>SIS 630 OnChip IDE Device</i>	63
Internal PCI/IDE	63
IDE Primary Master/Slave PIO	64
Primary Master/Slave UltraDMA	64
IDE Burst Mode	64
<i>SIS 630 OnChip PCI Device</i>	64
SIS-7018 AC97 AUDIO	64
SIS-900 10/100M ETHERNET	64
<i>Super I/O Device</i>	64
Onboard FDC Controller	64
Onboard Serial Port 1/ Port 2/Port 3/Port 4	64
UART Mode Select	65
UR2 Duplex Mode	65
Onboard Parallel Port 1/Port 2	65
Parallel Port Mode	65
ECP Mode Use DMA	65
USB Controller	65
USB Keyboard Support	65
IDE HDD Block Mode	66
Init Display First	66
System Share Memory Size	66
POWER MANAGEMENT SETUP	66
ACPI Function	67
ACPI Suspend Type	67
Video Off Option	67
Video Off Method	67
<i>Switch Function</i>	67
Hot Key Function As	67
HDD Off After	68
Power Button Over Ride	68
<i>PM Wake Up Events</i>	68
IRQ [3-7,9-15], NMI	68
Ring/PCIPME Power Up Control	68
KB Power On Password	68
Power Up by Alarm	68
PNP/PCI CONFIGURATION SETUP	69
<i>Reset Configuration Data</i>	69
<i>Resource controlled by</i>	69
<i>IRQ Resources</i>	70
<i>IRQ3/4/5/7/9/10/11/12/14/15 assigned to</i>	70
<i>PCI/VGA Palette Snoop</i>	70
PC HEALTH STATUS	71
<i>Voltage 0/1/2/3/4/5/6/7</i>	71
<i>Voltage Battery</i>	71
<i>Temperature 1/2/3</i>	72
<i>Fan 1/2 Speed</i>	72
FREQUENCY/VOLTAGE CONTROL	72

Auto Detect DIMM/PCI CLK.....	72
Spread Spectrum.....	72
CPU Host/DRAM/PCI Clock.....	72
CPU Clock Ratio.....	73
DEFAULTS MENU.....	73
Load Fail-Safe Defaults.....	73
Load Optimized Defaults.....	73
SUPERVISOR/USER PASSWORD SETTING.....	73
EXIT SELECTING.....	74
Save & Exit Setup.....	74
Exit Without Saving.....	74
APPENDIX A – WATCHDOG TIMER.....	76
APPENDIX B – POWER ON SELF TEST MESSAGES.....	78
POST MESSAGES.....	78
POST BEEP.....	78
ERROR MESSAGES.....	78
CMOS BATTERY HAS FAILED.....	78
CMOS CHECKSUM ERROR.....	78
DISK BOOT FAILURE, INSERT SYSTEM DISK AND PRESS ENTER.....	78
DISKETTE DRIVES OR TYPES MISMATCH ERROR - RUN SETUP.....	79
DISPLAY SWITCH IS SET INCORRECTLY.....	79
DISPLAY TYPE HAS CHANGED SINCE LAST BOOT.....	79
EISA Configuration Checksum Error PLEASE RUN EISA CONFIGURATION UTILITY.....	79
EISA Configuration Is Not Complete PLEASE RUN EISA CONFIGURATION UTILITY.....	79
ERROR ENCOUNTERED INITIALIZING HARD DRIVE.....	79
ERROR INITIALIZING HARD DISK CONTROLLER.....	79
FLOPPY DISK CNTRLR ERROR OR NO CNTRLR PRESENT.....	80
Invalid EISA Configuration PLEASE RUN EISA CONFIGURATION UTILITY.....	80
KEYBOARD ERROR OR NO KEYBOARD PRESENT.....	80
Memory Address Error at.....	80
Memory parity Error at.....	80
MEMORY SIZE HAS CHANGED SINCE LAST BOOT.....	80
Memory Verify Error at.....	80
OFFENDING ADDRESS NOT FOUND.....	81
OFFENDING SEGMENT:.....	81
PRESS A KEY TO REBOOT.....	81
PRESS F1 TO DISABLE NMI, F2 TO REBOOT.....	81
RAM PARITY ERROR - CHECKING FOR SEGMENT.....	81
Should Be Empty But EISA Board Found PLEASE RUN EISA CONFIGURATION UTILITY.....	81
Should Have EISA Board But Not Found PLEASE RUN EISA CONFIGURATION UTILITY.....	81
Slot Not Empty.....	81
SYSTEM HALTED, (CTRL-ALT-DEL) TO REBOOT.....	82
Wrong Board In Slot PLEASE RUN EISA CONFIGURATION UTILITY.....	82
FLOPPY DISK(S) fail (40) → Floppy Type mismatch.....	82
Hard Disk(s) fail (80) → HDD reset failed.....	82
Hard Disk(s) fail (40) → HDD controller diagnostics failed.....	82
Hard Disk(s) fail (20) → HDD initialization error.....	82
Hard Disk(s) fail (10) → Unable to recalibrate fixed disk.....	82
Hard Disk(s) fail (08) → Sector Verify failed.....	82
Keyboard is locked out - Unlock the key.....	82
Keyboard error or no keyboard present.....	82
Manufacturing POST loop.....	82
BIOS ROM checksum error - System halted.....	83
Memory test fail.....	83
APPENDIX C – DMA, IRQ AND 1ST MB MEMORY.....	84
I/O ADDRESS MAP.....	84
DMA CHANNEL ASSIGNMENTS.....	84
IRQ MAPPING CHART.....	84

1ST MB MEMORY ADDRESS MAP85
I/O ADDRESSES.....86
APPENDIX D – DIGITAL INPUT/OUTPUT.....88
APPENDIX E – DUAL VIEW SETUP90
APPENDIX F – HOW TO UPGRADE A NEW BIOS.....101
BIOS UPDATE PROCEDURE.....101
RECOVERING YOUR OLD BIOS103
INDEX.....105

Chapter 1 – Product Information

General Information

The 3115T 15" LCD TFT Panel PC, takes advantage of a modern flat-panel display, POS-370 CPU board, drive spaces and a power supply for minimum size. It is an IBM PC/AT compatible computer specially designed to meet the applications for industrial environments.

CPU Board

The 3115T is designed for the POS-370 CPU board. The POS-370 board is equipped with a high performance socket 370 850 MHz Pentium III[®] CPU, LCD/CRT interface and 10/100Mbps Ethernet.

LCD Display

The 3115T is equipped with an XGA (1027 x 768) 15" TFT LCD.

Power Supply

The 3115T is equipped with an 100-240 VAC, 50-60 Hz power supply.

Touch Screen

The 3115T is equipped with a Dynapro analog resistive touch screen.

HDD, FDD & CD-ROM

The 3115T comes equipped with an internal 20GB hard disk drive, a 1.44 MB floppy disk drive and a slimline CD-ROM drive.

Product Specifications

Disk Drive Bays

Supports one 2.5" HDD, one slim FDD, and one slim CD-ROM.

LCD Display

Display Model	NEC
Display Type	15" TFT color
LCD model	NL10276BC30-04F
Resolution	1024x768
Max. colors	24 bits
Brightness	200 cd/m ²
LCD MTBF	50,000 hrs
Backlight MTBF	25,000 hrs
Supply Voltage	5V

Dynapro Touch Screen

Type: Analog Resistive

Resolution: Continuous

Light transmission: Typical value 72%

Surface Hardness: 4H (Test condition: ASTM D3363-92A)

8-wire touch screen

Support driver: Supports DOS and Windows 95/98/NT/2000.

Environmental Specifications

Operating Temperature: 0°C ~ 50°C

Relative Humidity: 5~85% @40°C, non-condensing

Vibration: 5 to 17 Hz, 0.1" double-amplitude displacement, 17 to 500 Hz, 1.5 G peak to peak. (No rotating media.)

Power Supply

Output Spec. at 50°C

Model	Input Voltage	Rated Load				Max Output			
		+5V	+12V	-12V	-5V	+5V	+12V	-12V	-5V
ACE-915AP	100 to 240VAC	10A	2.5A	0.1A	0.1A	14A	4A	0.3A	0.2A

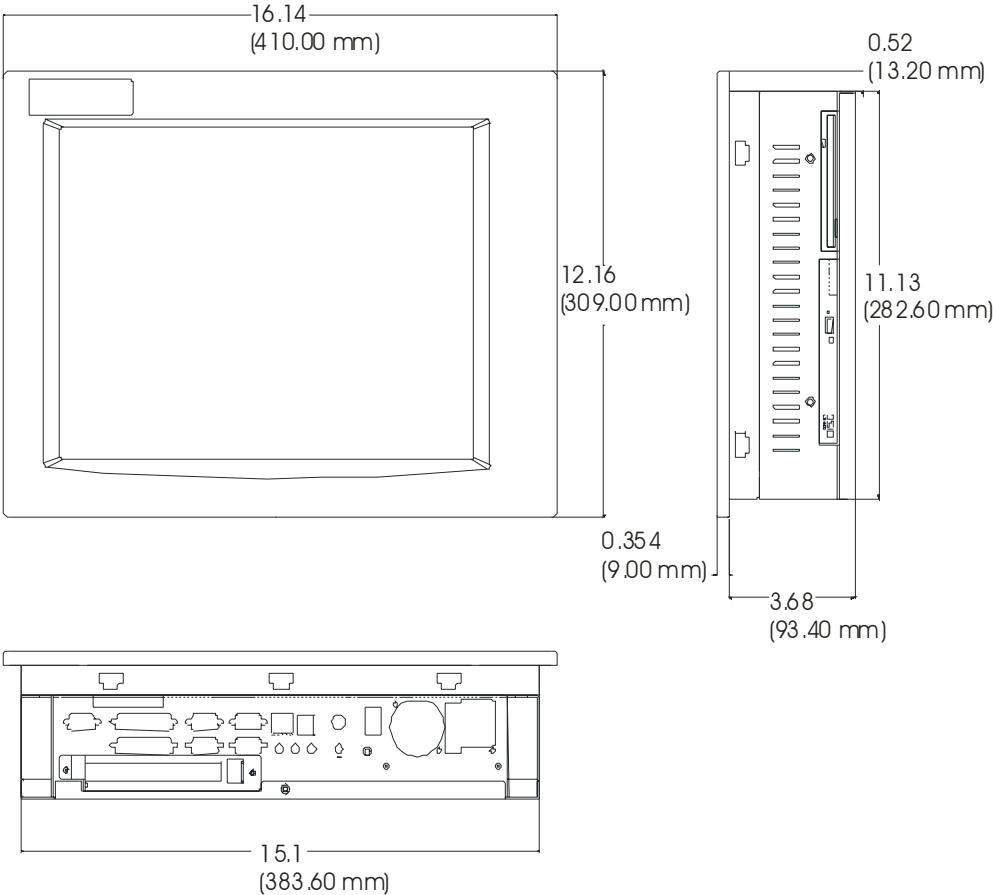
POS-370 CPU Board

The POS-370 socket 370 Celeron Pentium III[®] Processor Multimedia POS Control SBC provides the following features:

- CPU: Celeron or Pentium III[®] (up to 1GHz) Processor
- RAM: 2x DIMM sockets up to 1GB SDRAM.
- Bus: PCI bus expansion to support.
- Chipset: SIS630, support 133MHz CPU/DRAM clock
- LCD/CRT Controller: On chip SIS300
- 10/100Mbps Ethernet Controller: On chip SIS900 LAN BASE-TX standard Dual Auto-sensing interface to 10Mbps or 100Mbps networks
 - RJ45 connector for 10BASE-T and 100BASE-TX
 - Full duplex capability, full software driver support.
- On CHIP AC97 support SIS 7018
- Four high speed Serial ports: three RS-232C, one RS-232C or RS-422/485 Port
- Parallel Ports: Two SPP/EPP/ECP Parallel Ports
- Enhanced IDE Interface: (DMA 66)
40-pin Header for 3.5" HDD
- PCI Bus Expansion to support PCI bus signal
- Isolated Digital I/O: 4 Digital Inputs and 4 Digital Output channels
- IrDA port: Support Serial Infrared (SIR) and Amplitude Shift Keyed IR (ASKIR) interface.
- Five USB ports: Support dual USB ports for future expansion.
- Watchdog timer: Can be set by 1 min. period.
- Keyboard connector
- Mouse: PS/2 Mouse Port on-board.
- Power Consumption: +5V/6.5A
- Operating Humidity: 5-95% non-condensing

Mechanical Dimensions

Front Panel: 16.14" (410mm) x 12.16" (309mm) x 0.354" (9mm) (WxHxD)
Cabinet: 15.1" (383.6mm) x 11.13" (282.6mm) x 3.68" (93.4mm) (WxHxD)

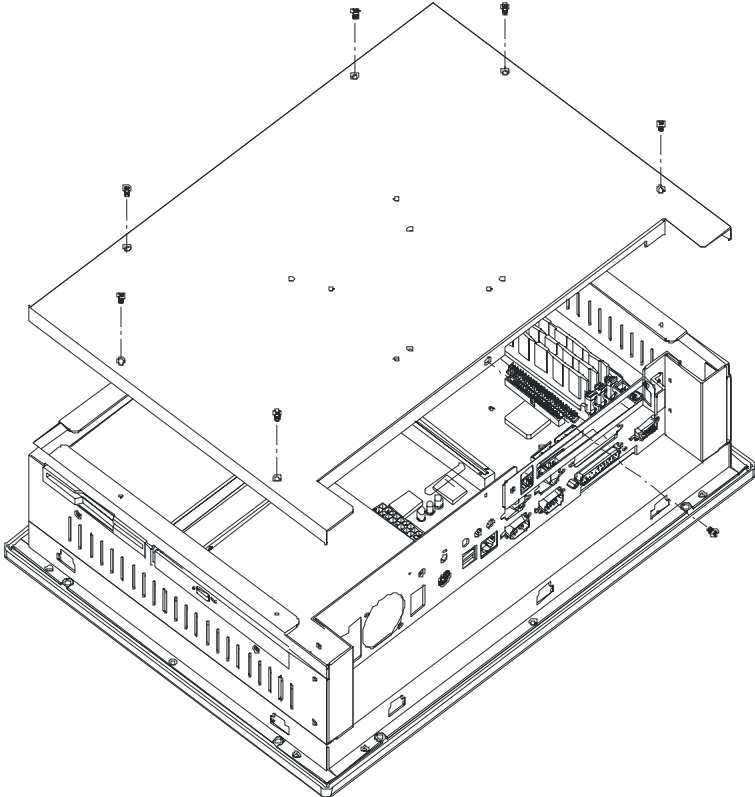


System Setup

The 3115T 15" LCD TFT Panel PC, is provided as a complete configured system for your operation. The following sections of this chapter will help your installation and maintenance.

Reverse Side of 3115T

The below diagram shows the reverse side of 3115T. For maintenance, installation or upgrade, first remove the back cover by unfastening seven screws as shown in the diagram below.

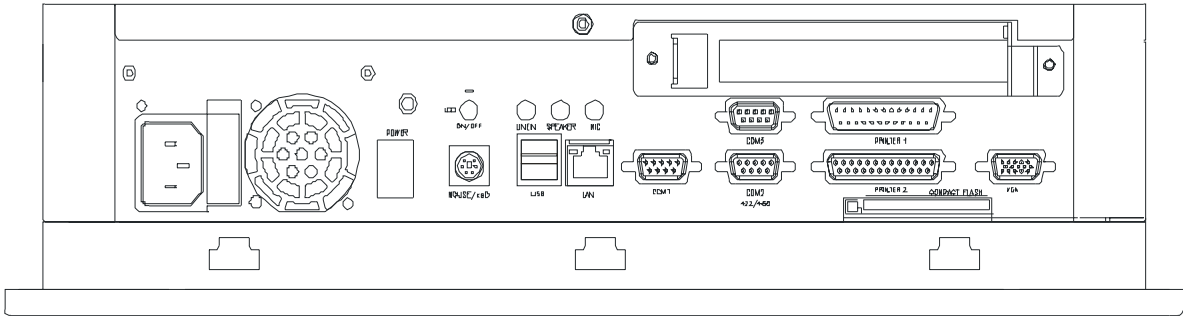


Caution

Before any installation/un-installation, please take precautions to prevent damage to the components due to static electricity.

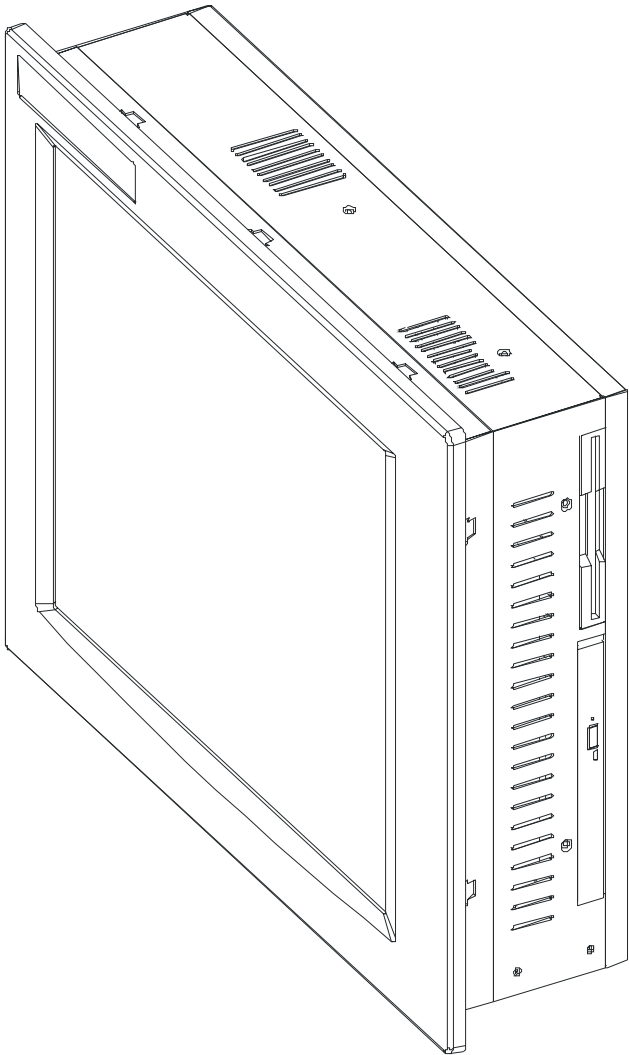
Reverse Side of the Rear Cabinet

The below figure shows the reverse side of the rear cabinet.



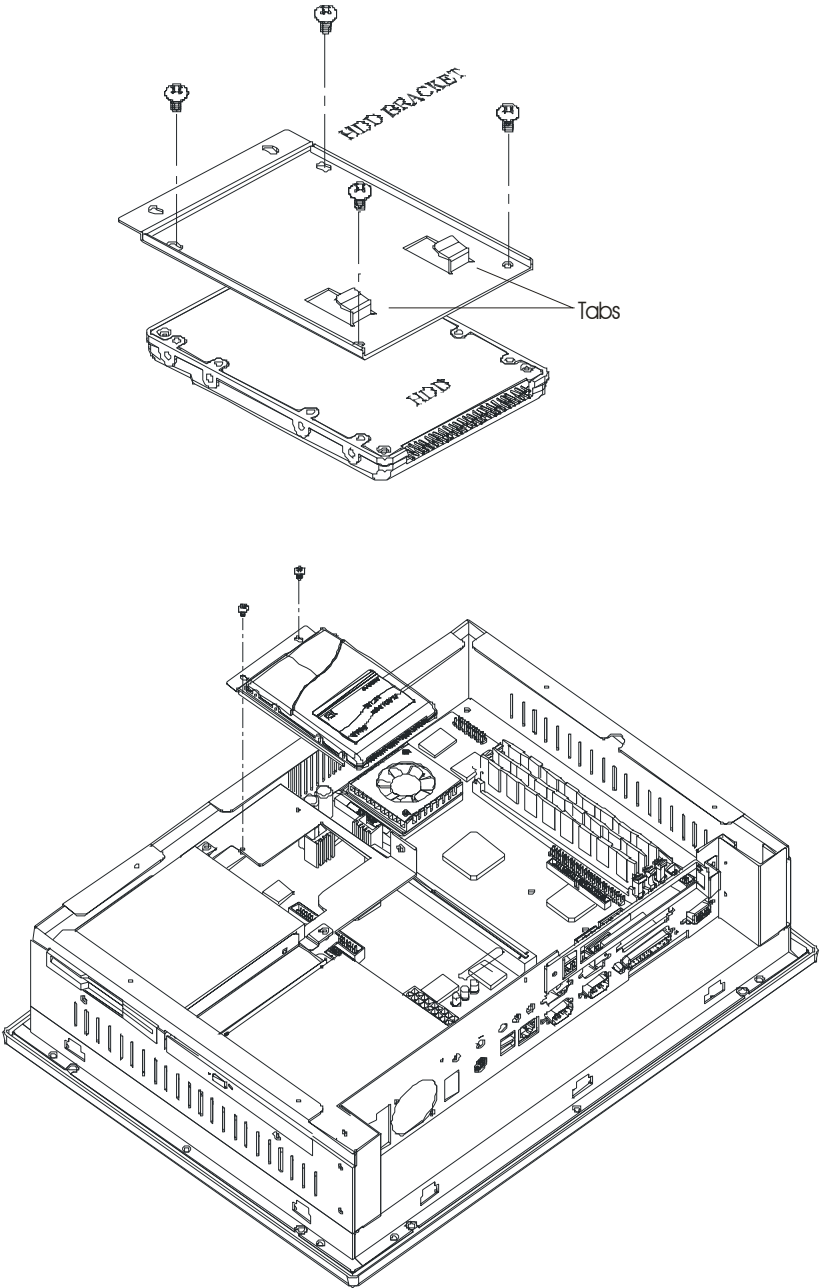
Side View of 3115T

One FDD and CD-ROM are accessible from the side of the chassis.



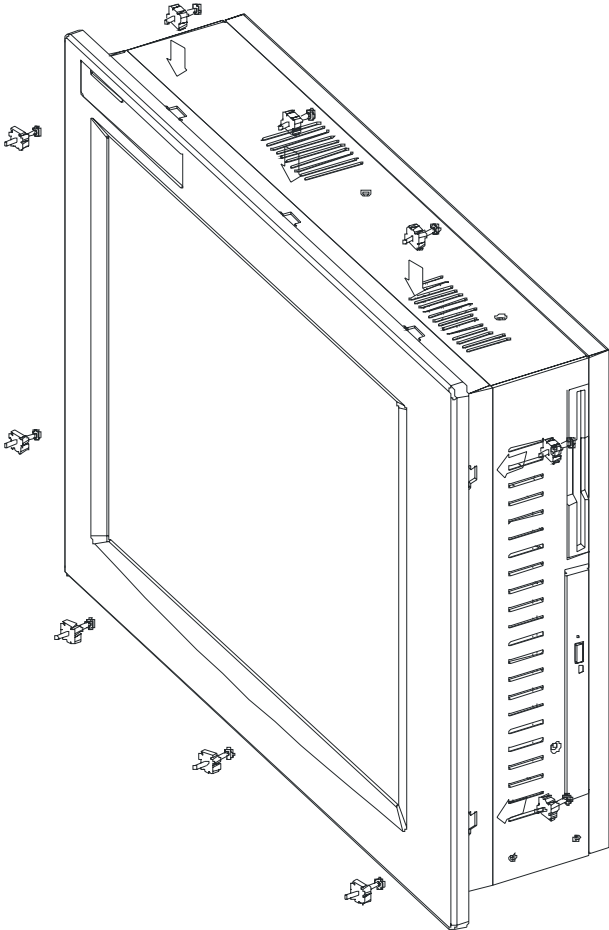
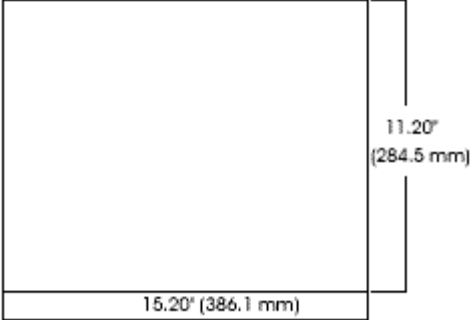
Hard Disk Drive Installation/Removal

To install the hard disk drive (HDD), first fasten the HDD to the HDD bracket. Then, slide the HDD bracket into place. Be sure to engage the tabs, fasten the HDD bracket to the cabinet using two screws as shown in the diagram below.



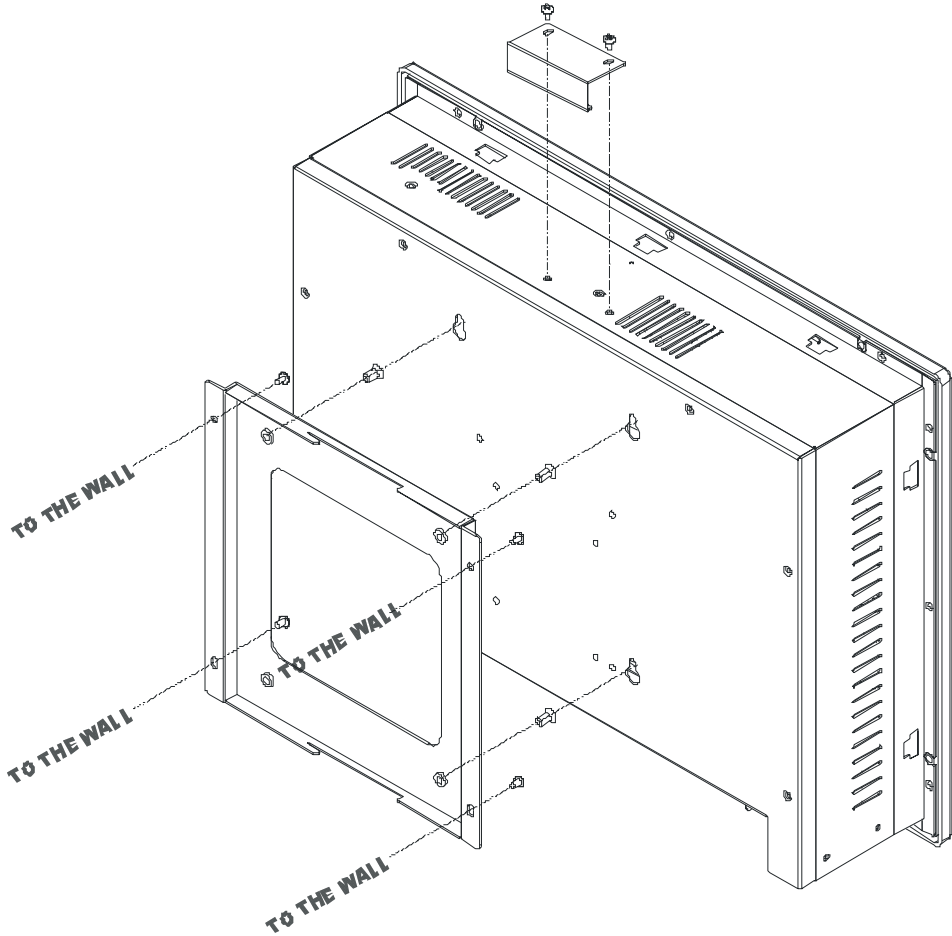
Panel Mounting

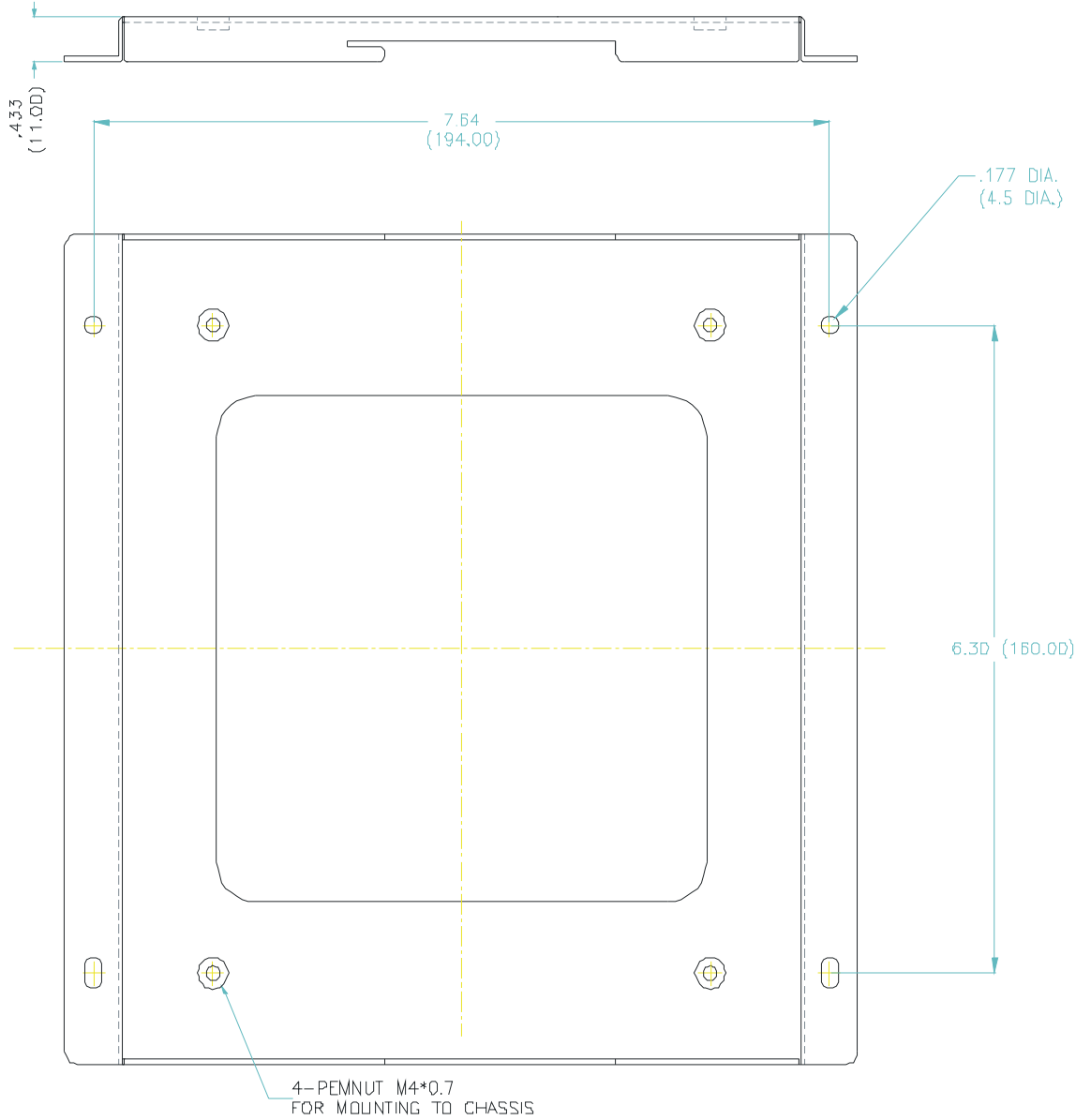
The 3115T is designed for panel mounting. Before mounting the 3115T to the panel, check the cut out dimension first. Then mount it to panel using ten supporters, as shown in the diagrams below.



Wall Mounting

The 3115T is suitable for wall mount using the included brackets and hardware.

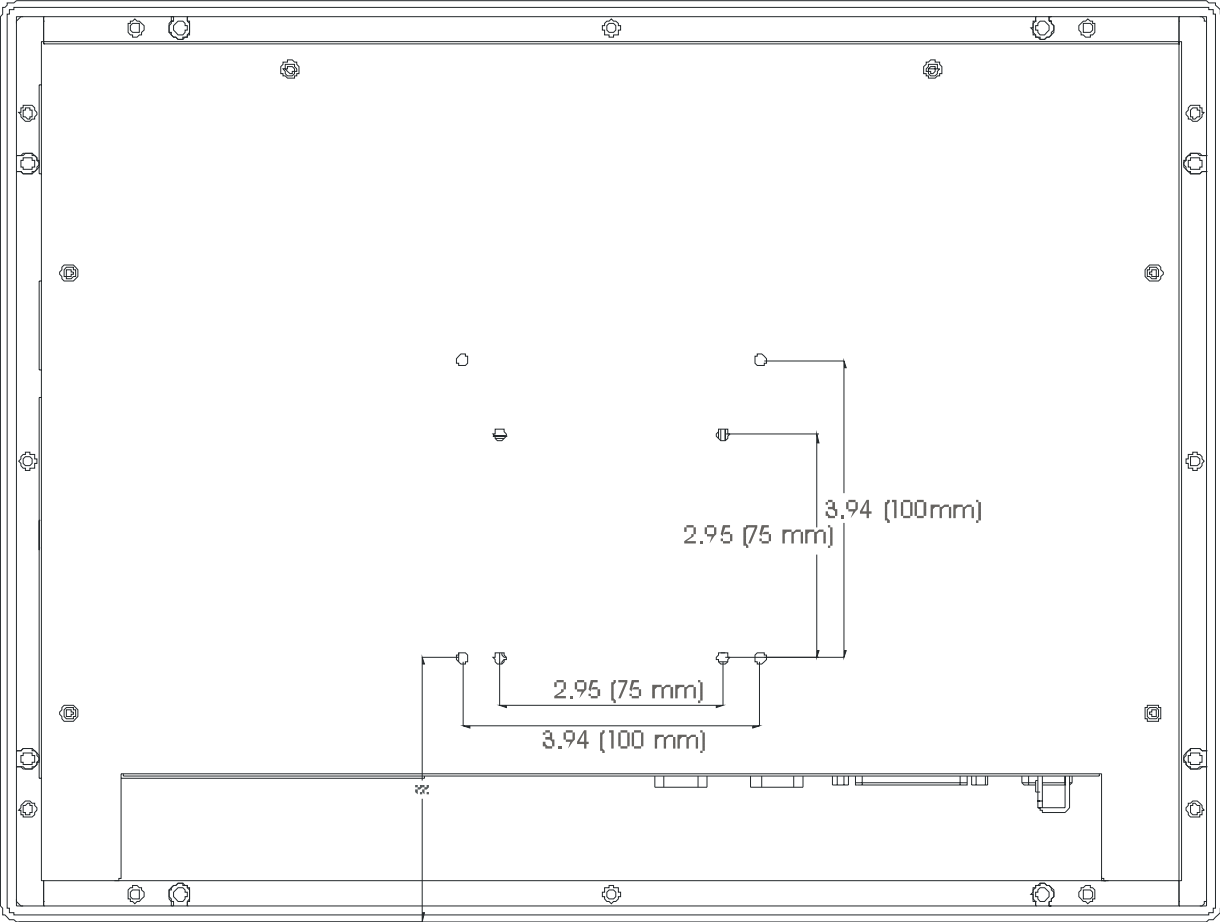




WALLMOUNT DIMENSIONS
ENGLISH (mm)

Arm Mounting

The 3115T also accommodates 75/100mm interface pads for arm mounting.



POS-370 Multimedia POS Control Board

Product Overview

The POS-370 Socket 370 Pentium III® (FC-PGA) with Multimedia and a 10/100Mbps Ethernet embedded board. It is equipped with a high-performance Pentium III (FC-PGA) 850MHz (or above) processor and advanced high performance multi-mode I/O.

This board has a built-in IDE Interface CompactFlashDisk™ Flash Disk for embedded application. The CompactFlashDisk™ Flash Disk is 100% compatible as a hard disk drive, allowing users to run any DOS command without need of extra software utility programs.

Two advanced high-performance LPC super I/O chip, the ITE (IT8705F) and NS (NS87366), are used in the POS-370 board. The on-chip UARTs are compatible with the NS16C550. The parallel port and FDD interface are compatible with IBM PC/AT architecture.

POS-370 uses the advanced SIS,SIS630 Chipset, which is 100% PCI compatible chipset with PCI 2.1 standard. In addition, this board provides two 168-pin sockets for its on-board DRAM. The DIMM module is a 3.3V SDRAM and accommodates up to 512MB for each module.

The VGA chip (on chip SIS300) used on POS-370 supports dual view function to display simultaneously on two monitors under Windows 95/98/NT/2000. In general, this function is achieved by two VGA chips.

Specifications

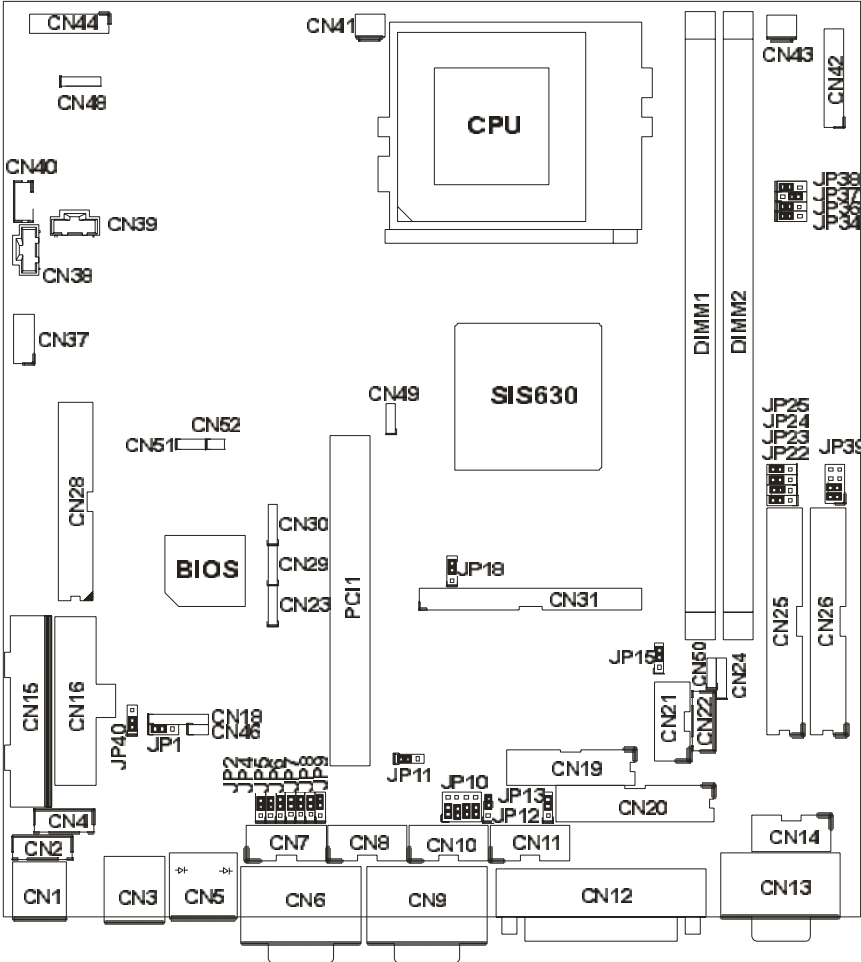
- **CPU:** Supports Pentium III (FC-PGA) 850MHz processor. Supports 133MHz FSB.
- **Expansion Bus:** PCI bus, expansion to support PCI bus signal
- **DMA channels:** 7
- **Interrupt levels:** 15
- **Chipset:** SIS630 66/100/133MHz CPU/DRAM Clock
- **RAM:** Two 168-pin DIMM sockets support SDRAM RAM module, up to 1GB.
- **AGP VGA Controller:** On chip SIS300 3D (Share memory up to 64MB RAM)
 - AGP bus speed: 66MHz
 - VESA Standard Super High Resolution Graphic Mode up to:
 - 1920 x 1440 256 colors 80 Hz
 - 1600 x 1200 256/32K colors 100 Hz
 - 1280 x 1024 256/32K/64K/16M colors 120 Hz
 - 1024 x 768 256/32K/64K/16M colors 120 Hz

800 x 600 16/256/32K/64K/16M colors 120 Hz

640 x 480 16/256/32K/64K/16M colors 120 Hz

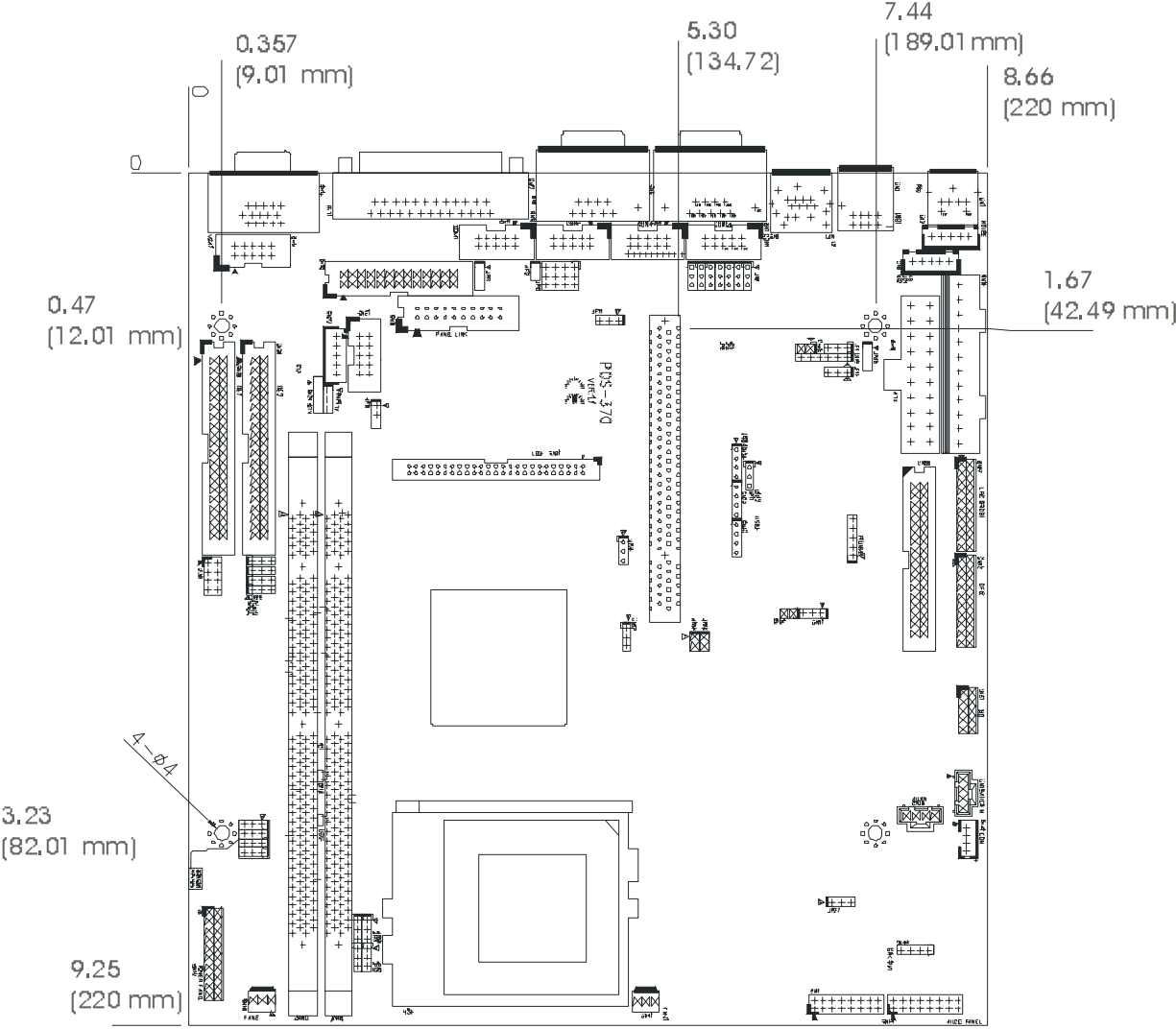
- **10/100Mbps Ethernet Controller:** SIS900 (embedded in SIS630 chipset), Auto-sensing interface to 10Mbps, 100Mbps Network
 - RJ45 connector for 10BASE-TX and 100BASE-TX
 - Full Duplex capability
 - Full Software driver support (except DOS)
- **Ultra DMA/66 (Enhanced PCI IDE Interface):** Up to four PCI Enhance IDE hard drives. The Ultra DMA/66 IDE can handle data transfer up to 66MB/second and is compatible with existing ATA-2 IDE specifications.
- **Multi-I/O Chip:** IT8705F, NS87366, all I/O setup by BIOS:
 - Three 16C550 RS-232C Ports (one used by the touch screen).
 - One RS-232 or RS-422/485 Port (RS485 features auto-direction control--no extra direction control is needed).
 - Two EPP/ECP Parallel Port, one Floppy Port (three ports total external to the 3115T).
- **Floppy disk drive interface:** Two 2.88 MB, 1.44MB, 1.2MB, 720KB, or 360KB floppy disk drives.
- **Four high speed Serial ports:** NS16C550 compatible UARTs (three ports total external to the 3115T, one used for the touch screen).
- **Bi-directional Parallel Port:** Two parallel port support (both external to the 3115T).
- **Digital I/O:** Isolated 4 Digital Input and 4 Digital Output channels internal to the 3115T.
- **IrDA port:** Support First Infrared(FIR) and Amplitude Shift. Keyed IR(ASKIR) interface internal to the 3115T.
- **USB port:** Support five USB ports for future expansion (two external to the 3115T—only one for DOS).
- **Watchdog timer:** Can be set to 1 minute (Minimal) or above period. Reset is generated when CPU does not periodically trigger the timer. Your program uses hex 440 to control the watch-dog and generate a system reset.
- **CompactFlashDisk™:** The Flash Disk provides 100% compatibility with IDE hard disk.
- **SIS7081 PCI Audio Chipset:** Sound Blaster compatible and Roland MPU401 compatible.
- **Wake-Up Function:** Supports Wake-On-Lan and Wake-On-Ring.
- **Dual View Function**
- **Mouse & Keyboard Connector:** PS/2 Mouse Port Expansion Keyboard. (Requires Y-adapter for both, external to the 3115T).
- **Operating Humidity:** 5 ~ 95 %, non-condensing

POS-370 CPU Board Layout



POS-370 Dimensions

Top View



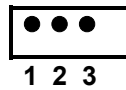
Caution

Some components on POS-370 are very sensitive to static discharges. To protect it from unintended damage, be sure to follow these precautions:

1. Ground yourself to remove any static charge before touching your POS-370. You can do it by using a grounded wrist strap at all times or by frequently touching any conducting materials that is connected to the ground.
2. Handle your POS-370 by its edges. Don't touch IC chips, leads or circuitry if not necessary.
3. Do not plug any connector or jumper while the power is on.
4. Do not put your POS-370 unprotected on a flat surface, as the board has components on both sides.

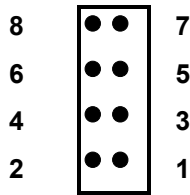
Setting the CPU of POS-370

- **JP34,36,37,38:** CPU & DRAM FREQUENCY SETTING (H/W)



CPU/DRAM	JP34	JP36	JP37	JP38
66/66	2-3	2-3	2-3	1-2
100/100	1-2	1-2	2-3	1-2
133/133	1-2	1-2	1-2	2-3

- **JP39: CPU MULTIPLIER SETTING (AUTO)**



*Normally the CPU from Intel has fixed multipliers in this case POS 370 will automatic follow the CPU's fixed multipliers setting no matter the JP39 jumper setting

Ratio	1-2	3-4	5-6	7-8
3.0 x	ON	OFF	OFF	OFF
3.5 x	ON	OFF	ON	OFF
4.0 x	OFF	ON	OFF	OFF
4.5 x	OFF	ON	ON	OFF
5.0 x	ON	ON	OFF	OFF
5.5x	ON	ON	ON	OFF
6.0x	OFF	OFF	OFF	ON
6.5x	OFF	OFF	ON	ON
7x	ON	OFF	OFF	ON
7.5x	OFF	OFF	ON	ON
8x	OFF	ON	OFF	ON

CompactFlashDisk™ Flash Disk Setting

The CompactFlashDisk™ is 100% compatible to IDE hard disk. It is just “plug and play”, easy and reliable. The CompactFlashDisk™ is available from 8MB to 128MB.

- **JP12: CompactFlashDisk™ IDE Master & Slave Setting**

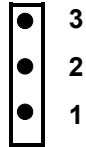


PIN NO.	DESCRIPTION
Open	Slave
Short	Master

Clear CMOS Setup

If you forget the CMOS password, you can clear or reset it by closing the **JP18**. After JP18(1-2) is closed, turn on the power for about 3 seconds then turn it off and open the JP18(1-2). Now, the password has been cleared from your CMOS.

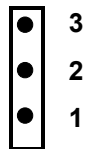
- **JP18: Clear CMOS Setup**



PIN NO.	DESCRIPTION
2-3	Normal Operation
1-2	Clear CMOS Setup

LCD Panel Power Setup

- **JP15: LCD Power Setting**



JP15	DESCRIPTION
2-3	+3.3V
1-2	+5V

* Set to +5V is NOT standard

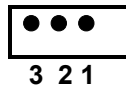
LCD Panel Type Selection

POS-370 can support up to 24 bit LCD.

- **JP22,23,24,25:** LCD Panel Type Selection (H/W)

Now support LCD Type:

1. IMES M121-SOHR (800x600 TFT)
2. LG LM151X2 (1024x768 TFT)
3. SAMSUNG LT121S1-153 (800x600 TFT)
4. SAMSUNG LT121S1-106 (800x600 TFT)

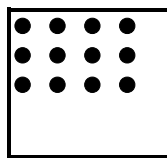


JP22	JP23	JP24	JP25	DESCRIPTION
2-3	2-3	1-2	2-3	1024X768 TFT
2-3	2-3	2-3	2-3	800X600 TFT

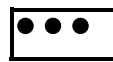
COM2 RS-232/422/485 Selection

- **JP10,JP11:** COM2 Mode Selection

3 6 9 12



2 5 8 11
1 4 7 10 (JP10)



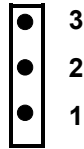
1 2 3

(JP11)

JP10	JP11	DESCRIPTION
1-2,4-5,7-8,10-11	1-2	RS232
2-3,5-6,8-9,11-12	2-3	RS422
2-3,5-6,8-9,11-12	2-3	RS485

COM Port RI and Voltage Selection

- **JP2,JP4:** Set pin 9 of COM1 as signal RI or voltage source

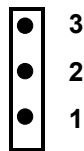


JP2	DESCRIPTION
2-3	COM1 RI Pin Use RI
1-2	COM1 RI Pin Use Voltage

JP4	DESCRIPTION
2-3	COM1 RI Pin Use Voltage +12V
1-2	COM1 RI Pin Use Voltage +5V

* If JP2 Uses (2-3) Don't care JP4

- **JP7,JP6:** Set pin 9 of COM2 as signal RI or voltage source



JP7	DESCRIPTION
2-3	COM2 RI Pin Use RI
1-2	COM2 RI Pin Use Voltage

JP6	DESCRIPTION
2-3	COM2 RI Pin Use Voltage +12V
1-2	COM2 RI Pin Use Voltage +5V

* If JP7 Uses (2-3) Don't care JP6

- **JP13,JP5:**Set pin 9 of COM3 as signal RI or voltage source



JP13	DESCRIPTION
2-3	COM3 RI Pin Use RI
1-2	COM3RI Pin Use Voltage

JP5	DESCRIPTION
2-3	COM3 RI Pin Use Voltage +12V
1-2	COM3RI Pin Use Voltage +5V

* If JP13 Uses (2-3) Don't care JP5

- **JP9,JP8:** Set pin 9 of COM4 as signal RI or voltage source



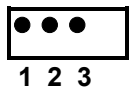
JP9	DESCRIPTION
2-3	COM4 RI Pin Use RI
1-2	COM4RI Pin Use Voltage

JP8	DESCRIPTION
2-3	COM4 RI Pin Use Voltage +12V
1-2	COM4RI Pin Use Voltage +5V

* If JP9 Uses (2-3) Don't care JP8

IR Power Selection

- **JP1:** Select the operating voltage for IR (infrared)



JP1	DESCRIPTION
1-2	VCC
2-3	5V Standby

USB Power Selection

- **JP40:** Select the operating voltage for USB



JP40	DESCRIPTION
1-2	VCC
2-3	5V Standby

Floppy Disk Drive Connector

POS-370 board is equipped with a 34-pin daisy-chain driver connector cable.

- **CN28:** FDD CONNECTOR

PIN NO.	DESCRIPTION	PIN NO.	DESCRIPTION
1	GROUND	2	REDUCE WRITE
3	GROUND	4	N/C
5	GROUND	6	N/C
7	GROUND	8	INDEX#
9	GROUND	10	MOTOR ENABLE A#
11	GROUND	12	DRIVE SELECT B#
13	GROUND	14	DRIVE SELECT A#
15	GROUND	16	MOTOR ENABLE B#
17	GROUND	18	D4IRECTION#
19	GROUND	20	STEP#
21	GROUND	22	WRITE DATA#
23	GROUND	24	WRITE GATE#
25	GROUND	26	TRACK 0#
27	GROUND	28	WRITE PROTECT#
29	GROUND	30	READ DATA#
31	GROUND	32	SIDE 1 SELECT#
33	GROUND	34	DISK CHANGE#

PCI E-IDE Disk Drive Connector

You can attach four IDE (Integrated Device Electronics) hard disk drives to the POS-370 IDE controller.

- **CN26,25:** (40Pin 2.54mm IDE 1, 2): Primary, Secondary IDE Connector
- **CN26,25:** IDE1,2 Interface Connector

PIN NO.	DESCRIPTION	PIN NO.	DESCRIPTION
1	RESET#	2	GND
3	DATA 7	4	DATA 8
5	DATA 6	6	DATA 9
7	DATA 5	8	DATA 10
9	DATA 4	10	DATA 11
11	DATA 3	12	DATA 12
13	DATA 2	14	DATA 13
15	DATA 1	16	DATA 14
17	DATA 0	18	DATA 15
19	GND	20	N/C
21	IDE DRQ	22	GND
23	IOW#	24	GND
25	IOR#	26	GND
27	IDE CHRDY	28	GND
29	IDE DACK	30	GND
31	INTERRUPT	32	N/C
33	SA 1	34	N/C
35	SA 0	36	SA 2
37	HDC CS0#	38	HDC CS1#
39	HDD ACTIVE#	40	GND

Parallel Port

This port is usually connected to a printer. The POS-370 includes an on-board parallel port, accessed through a 25-pin D-type female connector CN12 and 26-pin flat-cable connector CN20.

- **CN12:** (LPT1) Parallel Port Connector

Pin	Description	Pin	Description
1	STROBE#	2	DATA 0
3	DATA 1	4	DATA 2
5	DATA 3	6	DATA 4
7	DATA 5	8	DATA 6
9	DATA 7	10	ACKNOWLEDGE
11	BUSY	12	PAPER EMPTY
13	PRINTER SELECT	14	AUTO FORM FEED #
15	ERROR#	16	INITIALIZE
17	PRINTER SELECT LN#	18	GND
19	GND	20	GND
21	GND	22	GND
23	GND	24	GND
25	GND		

- **CN20:** (LPT2) Parallel Port Connector

Pin	Description	Pin	Description
1	STROBE#	2	AUTO FORM FEED #
3	DATA 0	4	ERROR#
5	DATA 1	6	INITIALIZE
7	DATA 2	8	PRINTER SELECT LN#
9	DATA 3	10	GND
11	DATA 4	12	GND
13	DATA 5	14	GND
15	DATA 6	16	GND
17	DATA 7	18	GND
19	ACKNOWLEDGE	20	GND
21	BUSY	22	GND
23	PAPER EMPTY	24	GND
25	PRINTER SELECT	26	N/C

Serial Ports

The POS-370 offers four high-speed NS16C550 compatible UARTs with Read/Receive 16 byte FIFO serial ports (COM1/COM2/COM3/COM4).

- **CN7:** Serial Port 2x5 pin header Connector (COM1)

Pin No.	Description	Pin No.	Description
1	DCD	2	DSR
3	RXD	4	RTS
5	TXD	6	CTX
7	DTR	8	RI
9	GND	10	NC

- **CN6:** Serial Port DB-9 Male Connector (COM1)

Pin No.	Description
1	DATA CARRIER DETECT (DCD)
2	RECEIVE DATA (RXD)
3	TRANSMIT DATA (TXD)
4	DATA TERMINAL READY (DTR)
5	GROUND (GND)
6	DATA SET READY (DSR)
7	REQUEST TO SEND (RTS)
8	CLEAR TO SEND (CTS)
9	RING INDICATOR (RI)

- **CN10:** Serial Port 2x5 pin header Connector (COM2)

COM2 supports three modes: RS232, RS422, RS485 (For 2x5 pin header Connector).

RS232 Mode

Pin No.	Description	Pin No.	Description
1	DCD	2	DSR
3	RXD	4	RTS
5	TXD	6	CTX
7	DTR	8	RI
9	GND	10	NC

RS422 Mode

Pin No.	Description	Pin No.	Description
1	TXD-	2	RX-
3	TXD+	4	RX+
5	NC	6	NC
7	NC	8	Voltage
9	NC	10	NC

RS485 Mode

Pin No.	Description	Pin No.	Description
1	RTX-	2	NC
3	RTX+	4	NC
5	NC	6	NC
7	NC	8	Voltage
9	NC	10	NC

- **CN9:** Serial Port DB-9 Male Connector (COM2)

COM2 supports three modes: RS232, RS422, RS485 (For DB-9 Connector).

RS232 Mode

Pin No.	Description	Pin No.	Description
1	DCD	6	DSR
2	RXD	7	RTS
3	TXD	8	CTX
4	DTR	9	RI
5	GND		

RS422 Mode

Pin No.	Description	Pin No.	Description
1	TXD-	6	RX-
2	TXD+	7	RX+
3	NC	8	NC
4	NC	9	Voltage
5	NC		

RS485 Mode

Pin No.	Description	Pin No.	Description
1	RTX-	6	NC
2	RTX+	7	NC
3	NC	8	NC
4	NC	9	Voltage
5	NC		

- **CN11:** Serial Port 2x5 pin header Connector (COM3)

Pin No.	Description	Pin No.	Description
1	DCD	2	DSR
3	RXD	4	RTS
5	TXD	6	CTX
7	DTR	8	RI
9	GND	10	NC

- **CN8:** Serial Port 2x5 pin header Connector (COM4)

Pin No.	Description	Pin No.	Description
1	DCD	2	DSR
3	RXD	4	RTS
5	TXD	6	CTX
7	DTR	8	RI
9	GND	10	NC

Keyboard/Mouse Connector

The POS-370 provides one external keyboard and mouse connector. A Y-adapter is required to use both.

- **CN1:** Extended Keyboard & PS/2 Mouse 6-pin Mini Din Connector

PIN NO.	DESCRIPTION
1	KB DATA
2	MS DATA
3	GND
4	VCC
5	KB CLOCK
6	MS CLOCK

- **CN4:** 5-pin Header Keyboard Connector

PIN NO.	DESCRIPTION
1	KB CLOCK
2	KB DATA
3	N/C
4	GND
5	+5V

- **CN2:** PS/2 Mouse 5-pin Header Connector

PIN NO.	DESCRIPTION
1	MS DATA
2	N/C
3	GND
4	+5V
5	MS CLOCK

External Switches and Indicators

There are several external switches and indicators for monitoring and controlling your CPU board. All the functions are in the CN42 connector.

- **CN42:** Multi Panel

PIN NO.	DESCRIPTION	PIN NO.	DESCRIPTION
1.	SPEAKER	11	POWER-VCC
2.	ACPI LED	12	N/C
3.	N/C	13	GND
4.	+5V	14	KEYLOCK
5.	RESET SW	15	GND
6.	GND	16	GND
7.	IDE LED -	17	N/C
8.	IDE LED+	18	ATX POWER CONTROL
9.	ATX POWER BUTTON	19	ATX 5VSB
10.	GND	20	ATX 5VSB

USB Port Connector

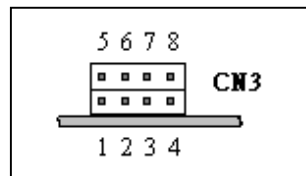
The POS-370 has five built-in USB ports for the future new I/O bus expansion.

- **CN23, 29, 30:** Pin Header USB Connector

PIN NO.	Description
1	VCC
2	USBD0-
3	USBD0+
4	GND

- **CN3:** 2 External USB Connectors

PIN NO.		DESCRIPTION
1	5	VCC
2	6	USBD0-
3	7	USBD0+
4	8	GND



IrDA Infrared Interface Port

POS-370 built-in IrDA port supports Serial Infrared (SIR) or Amplitude Shift Keyed IR (ASKIR) interface. If you want to use the IrDA port, you have to configure the FIR or ASKIR model in the BIOS's Peripheral Setup's COM2. The normal RS-232 COM2 will be disabled.

- **CN18:** IrDA Connector

PIN NO.	DESCRIPTION
1	VCC
2	CIR-TX
3	IR-RX
4	GND
5	IR-TX
6	CIR-RX

* Pin 2, 6 Support CIR

VGA Connector

The built-in 10-pin VGA connector can be connected directly to your monochrome CRT monitor as well as high-resolution color CRT monitor.

- **CN13:** 15-pin Female VGA Connector

1	RED	2	GREEN
3	BLUE	4	N/C
5	GND	6	GND
7	GND	8	GND
9	VCC	10	GND
11	N/C	12	DDC DAT
13	HSYNC	14	VSYNC
15	DDC CLK		

- **CN14:** 10-pin Connector

1	RED	2	SMCLK
3	GREEN	4	SMDATA
5	BLUE	6	GND
7	H-SYNC	8	GND
9	V-SYNC	10	GND

- **CN21:** 10-pin Connector (Option SIS301)
*(For Dual Display → Secondary Monitor → CRT)

1	RED	2	SMCLK
3	GREEN	4	SMDATA
5	BLUE	6	GND
7	H-SYNC	8	GND
9	V-SYNC	10	GND

LAN RJ45 Connector

POS-370 is equipped with a built-in 10/100Mbps Ethernet Controller. You can connect it to your LAN through RJ45 LAN connector. The pin assignments are as follows.

- **CN5:** LAN 1 RJ45 Connector

1	TX+	5.	N/C
2	TX-	6.	RX-
3.	RX+	7.	N/C
4.	N/C	8.	N/C

Fan Connector

The POS-370 provides one CPU cooling fan connector and one system fan connectors. These connectors can supply 12V/500mA to the cooling fan.

- **CN41:** CPU Fan Connector

PIN NO.	DESCRIPTION
1	Fan Sensor
2	+12V
3	GND

- **CN43:** System Fan Connector

PIN NO.	DESCRIPTION
1	Fan Sensor
2	+12V
3	GND

LCD Backlight Connector

- **CN22:** LCD Backlight Connector

Pin No.	Description	Pin No.	Description
1	NC	2	ENABKL
3	GND	4	+12V
5	GND		

Home Networking Connector (Optional)

- **CN49:** Home Networking Connector

Pin No.	Description	Pin No.	Description
1	HRXP	2	GND
3	HRXN		

*** Need Transformer Board****TV Out Connector (Optional)**

* (For Dual Display → Secondary Monitor → TV)

- **CN24:** TV Connector (S-video)

Pin No.	Description	Pin No.	Description
1	TV-Y	2	GND
3	GND	4	TV-C

- **CN50:** TV Connector (Composite)

Pin No.	Description	Pin No.	Description
1	TV-CVBS	2	GND
3	GND		

Temperature Sensor Connector

- **CN46:** Temperature Sensor Connector

Pin No.	Description	Pin No.	Description
1	THER-DA	2	GND

LCD Panel Connector

- **CN31:** LCD Panel Connector

Pin	Description	Pin	Description
1	NC	2	NC
3	NC	4	NC
5	NC	6	NC
7	NC	8	NC
9	NC	10	NC
11	NC	12	NC
13	NC	14	P21
15	P23	16	P22
17	P16	18	P20
19	P17	20	P18
21	P19	22	P14
23	P13	24	P12
25	P15	26	P11
27	P7	28	P10
29	VDD	30	VDD
31	P9	32	P8
33	P4	34	P6
35	P3	36	P5
37	P2	38	P1
39	M	40	P0
41	SHFCLK	42	ENABLK
43	FPVDD	44	FLM
45	FPVEE	46	LP
47	GND	48	GND
49	+12V	50	+12V

Audio Line IN

- **CN40:** Audio CD IN (2.0mm)

Pin No.	Description	Pin No.	Description
1	CD IN_R	2	GND
3	CD IN_L	4	GND

- **CN38:** Audio Video IN (2.54mm)

Pin No.	Description	Pin No.	Description
1	CD IN_R	2	GND
3	GND	4	CD IN_L

- **CN39:** Audio AUX IN (2.54mm)

Pin No.	Description	Pin No.	Description
1	CD IN_R	2	GND
3	GND	4	CD IN_L

Digital Input/Output

POS-370 provides an isolated digital input/output. The usage is described in detail in Appendix E.

- **CN37:** Digital Input/Output

Pin	Description	Pin	Description
1	Input 0	2	Input 1
3	Input 2	4	Input 3
5	Output 0	6	Output 1
7	Output 2	8	Output 3
9	Ext-GND	10	Ext-VCC

Audio Panel

- CN44: Audio Panel

Pin	Description	Pin	Description
1	Line Out R	2	GND
3	Line Out L	4	GND
5	Line Out R	6	Line Out L
7	GND	8	GND
9	Line In R	10	Line In L
11	GND	12	GND
13	SPK Out R	14	SPK Out L
15	MIC In	16	GND

Compact Flash Storage Card Socket

The POS-370 configures Compact Flash Storage Card in IDE Mode. It will use IDE channel when Compact Flash card is plugged in.

- **CN45:** Compact Flash Storage Card Socket pin assignment

PIN NO	DESCRIPTION	PIN NO	DESCRIPTION
1	GROUND	26	CARD DETECT1
2	D3	27	D11
3	D4	28	D12
4	D5	29	D13
5	D6	30	D14
6	D7	31	D15
7	CS1#	32	CS3#
8	N/C	33	N/C
9	GROUND	34	IOR#
10	N/C	35	IOW#
11	N/C	36	OBLIGATORY TO PULL HIGH
12	N/C	37	IRQ15
13	VCC	38	VCC
14	N/C	39	MASTER/SLAVE
15	N/C	40	N/C
16	N/C	41	RESET#
17	N/C	42	IORDY
18	A2	43	N/C
19	A1	44	OBLIGATORY TO PULL HIGH
20	A0	45	ACTIVE#
21	D0	46	PDIAG#
22	D1	47	D8
23	D2	48	D9
24	N/C	49	D10
25	CARD DETECT2	50	GROUND

Audio SPK Output Connector

- **CN48:** Audio SPK Output Connector

Pin No.	Description	Pin No.	Description
1	SPK-R	2	GND
3	GND	4	SPK-L

Chassis Intrusion Detection Connector

- **CN51:** Chassis Intrusion Detection Input Connector

PIN NO.	DESCRIPTION
1	Pull_High
2	CHAS_IN
3	GND

* Need Pin 1 and Pin 2 short → Active

- **CN52:** Chassis Intrusion Detection Output Connector

PIN NO.	DESCRIPTION
1	CHAS_OUT
2	5VSB

* Normal → Pin 1 High

* Active → Pin 1 Always Low (If JP41 Pin 2 short to Pin 1)

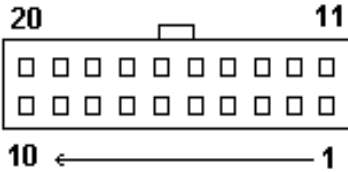
AT and ATX Power Connector

- **CN15:** AT Power Supply Connector

If you use AT power supply, plug both of the power supply connectors into CN15. Make sure that you plug them in the right direction, the black wires (GND) of each power cable must be CLOSE to each other (in the center of the CN15 connector).

Pin #	CN15 Connector	Cable Color
P8	1 ———— ⊖	Power Good
	2 ———— ●	+5V Red
	3 ———— ●	+12V
	4 ———— ●	-12V
	5 ———— ●	Ground Black
	6 ———— ●	Ground Black
	7 ———— ⊖	Ground Black
	8 ———— ●	Ground Black
P9	9 ———— ●	-5V
	10 ———— ●	+5V Red
	11 ———— ●	+5V Red
	12 ———— ●	+5V Red

- **CN16:** ATX Power Supply Connector



CN16 is a 20-pin ATX Power Supply Connector. Please refer to the following table for the pin assignments.

PIN NO.	DESCRIPTION	PIN NO.	DESCRIPTION
11	3.3V	1	3.3V
12	-12V	2	3.3V
13	GND	3	GND
14	PS-ON	4	+5V
15	GND	5	GND
16	GND	6	+5V
17	GND	7	GND
18	-5V	8	Power good
19	+5V	9	5VSB
20	+5V	10	+12V

Chapter 2 – Award BIOS Setup

Introduction

This chapter describes the Award Setup program built into the ROM BIOS. The setup program allows users to modify the basic system configuration. This special information is then stored in battery-backed RAM so that it retains the Setup information when the power is turned off.

Starting Setup

The Award BIOS is immediately activated when you first power on the computer. The BIOS reads the system information contained in the CMOS and begins the process of checking out the system and configuring it. When it finishes, the BIOS will seek an operating system on one of the disks and then launch and turn control over to the operating system.

While the BIOS is in control, the Setup program can be activated in one of two ways:

1. By pressing immediately after switching the system on, or
2. By pressing the key when the following message appears briefly at the bottom of the screen during the POST (Power On Self Test).

Press DEL to enter SETUP.

If the message disappears before you respond and you still wish to enter Setup, restart the system to try again by turning it OFF then ON or pressing the "RESET" button on the system case. You may also restart by simultaneously pressing <Ctrl>, <Alt>, and <Delete> keys. If you do not press the keys at the correct time and the system does not boot, an error message will be displayed and you will again be asked to...

PRESS F1 TO CONTINUE, DEL TO ENTER SETUP

Using Setup

In general, you use the arrow keys to highlight items, press Enter to select, use the PgUp and PgDn keys to change entries, press F1 for help and press Esc to quit. The following table provides more detail about how to navigate in the Setup program using the keyboard.

Up arrow	Move to previous item
Down arrow	Move to next item
Left arrow	Move to the item in the left hand
Right arrow	Move to the item in the right hand
Esc key	Main Menu -- Quit and not save changes into CMOS Status Page Setup Menu and Option Page Setup Menu -- Exit current page and return to Main Menu
PgUp key	Increase the numeric value or make changes
PgDn key	Decrease the numeric value or make changes
+ key	Increase the numeric value or make changes
- key	Decrease the numeric value or make changes
F1 key	General help, only for Status Page Setup Menu and Option Page Setup Menu
(Shift)F2 key	Change color from total 16 colors. F2 to select color forward, (Shift) F2 to select color backward
F3 key	Calendar, only for Status Page Setup Menu
F4 key	Reserved
F5 key	Restore the previous CMOS value from CMOS, only for Option Page Setup Menu
F6 key	Load the default CMOS value from BIOS default table, only for Option Page Setup Menu
F7 key	Load the default
F8 key	Reserved
F9 key	Reserved
F10 key	Save all the CMOS changes, only for Main Menu

Getting Help

Press F1 to pop up a small help window that describes the appropriate keys to use and the possible selections for the highlighted item. To exit the Help Window press Esc or the F1 key again.

If, after making and saving system changes with Setup, you discover that your computer no longer is able to boot, the Award BIOS supports an override to the CMOS settings which resets your system to its defaults.

The best advice is to only alter settings which you thoroughly understand. To this end, we strongly recommend that you avoid making any changes to the chipset defaults. These defaults have been carefully chosen by both Award and your systems manufacturer to provide the absolute maximum performance and reliability. Even a seemingly small change to the chipset setup has the potential for causing you to use the override.

Main Menu

Once you enter the AwardBIOS™ CMOS Setup Utility, the Main Menu will appear on the screen. The Main Menu allows you to select from several setup functions and two exit choices. Use the arrow keys to select among the items and press Enter to accept and enter the sub-menu.

CMOS Setup Utility - Copyright (C) 1984-1998

Standard CMOS Feature	Frequency/Voltage Control
Advanced BIOS Feature	Load Fail-Safe Defaults
Advanced Chipset Feature	Load Optimized Defaults
Integrated Peripherals	Set Supervisor Password
Power Management Setup	Set User Password
PnP/PCI Configurations	Save & Exit Setup
PC Health Status	Exit Without Saving
Esc: Quit ↑ ↓ ← →: Select Item	
F10: Save & Exit Setup	
Time, Date, Hard Disk Type....	

Note that a brief description of each highlighted selection appears at the bottom of the screen.

The main menu includes the following main setup categories. Note that some systems may not include all entries.

Standard CMOS Features

Use this menu for basic system configuration. Refer to the “Standard CMOS Setup” heading later in this chapter for details.

Advanced BIOS Features

Use this menu to set the Advanced Features available on your system. Refer to the “Advanced BIOS Features” heading later in this chapter for details.

Advanced Chipset Features

Use this menu to change the values in the chipset registers and optimize your system's performance. Refer to the “Advanced Chipset Features” heading later in this chapter for details.

Integrated Peripherals

Use this menu to specify your settings for integrated peripherals. Refer to the “Integrated Peripherals” heading later in this chapter for details.

Power Management Setup

Use this menu to specify your settings for power management. Refer to the “Power Management Setup” heading later in this chapter for details.

PnP/PCI Configuration

This entry appears if your system supports PnP/PCI. Refer to the “PnP/PCI Configuration Setup” heading later in this chapter for details.

PC Health Status

Use this menu to monitor your hardware. Refer to the “PC Health Status” heading later in this chapter for details.

Frequency/Voltage Control

Use this menu to specify your settings for frequency/voltage control. Refer to the “Frequency/Voltage Control” heading later in this chapter for details.

Load Fail-Safe Defaults

Use this menu to load the BIOS default values for the minimal/stable performance for your system to operate. Refer to the “Defaults Menu” heading later in this chapter for details.

Load Optimized Defaults

Use this menu to load the BIOS default values that are factory settings for optimal performance system operations. While Award has designed the custom BIOS to maximize performance, the factory has the right to change these defaults to meet their needs. Refer to the “Defaults Menu” heading later in this chapter for details.

Supervisor/User Password

Use this menu to set User and Supervisor Passwords. Refer to the “Supervisor/User Password Setting” heading later in this chapter for details.

Save & Exit Setup

Save CMOS value changes to CMOS and exit setup. Refer to the “Exit Selecting” heading later in this chapter for details.

Exit Without Save

Abandon all CMOS value changes and exit setup. Refer to the “Exit Selecting” heading later in this chapter for details.

Standard CMOS Setup

The items in Standard CMOS Setup Menu are divided into 10 categories. Each category includes no, one or more than one setup items. Use the arrow keys to highlight the item and then use the PgUp or PgDn keys to select the value you want in each item.

Standard CMOS Features

<p>Date: Mon, Feb 8 1999 Time: 16:19:20</p> <ul style="list-style-type: none"> ➤ IDE Primary Master 2557 MB ➤ IDE Primary Slave None ➤ IDE Secondary Master None ➤ IDE Secondary Slave None <p>Drive A 1.44M, 3.5 in.</p> <p>Drive B None</p> <p>LCD&CRT Both Panel : Hardware Setting Halt On All Errors</p> <p>Based Memory 640K Extended Memory 64512K Total Memory 65536K</p>	<p style="text-align: center;">Item Help</p> <hr/> <p>Menu Level ➤</p> <p>Change the day, month, year and century</p>
<p>↑↓←→Move Enter: Select +/-/PU/PD: Value F10:Save ESC: Exit F1:General Help</p> <p style="text-align: center;">F5:Previous Values F6:Fail-safe defaults F7:Optimized Defaults</p>	

Figure 1: The Main Menu

Main Menu Selections

Item	Options	Description
Date	MM DD YYYY	Set the system date.
Time	HH: MM: SS	Set the system time
IDE Primary Master	Options are in its sub menu (described in Table 3)	Press Enter to enter the sub menu of detailed options
IDE Primary Slave	Options are in its sub menu (described in Table 3)	Press Enter to enter the sub menu of detailed options
IDE Secondary Master	Options are in its sub menu (described in Table 3)	Press Enter to enter the sub menu of detailed options
IDE Secondary Master	Options are in its sub menu (described in Table 3)	Press Enter to enter the sub menu of detailed options
Drive A Drive B	None 360K, 5.25 in 1.2M, 5.25 in 720K, 3.5 in 1.44M, 3.5 in 2.88M, 3.5 in	Select the type of floppy disk drive installed in your system
LCD&CRT	Both CRT	Select LCD & CRT Display
Panel	Hardware Setting 800x600 TFT1 800x600 TFT2 1024x768 18bit TFT1 1024x768 18bit TFT2 1024x768 18bit TFT3 1024x768 18bit TFT4 1024x768 24bit TFT	Select Panel Type. Every type is predefined with a special timing. You may try each setting according to your LCD. However, not every kind of LCD will be supported.
Halt On	All Errors No Errors All, but Keyboard All, but Diskette All, but Disk/Key	Select the situation in which you want the BIOS to stop the POST process and notify you
Base Memory	N/A	Displays the amount of conventional memory detected during boot up

Extended Memory	N/A	Displays the amount of extended memory detected during boot up
Total Memory	N/A	Displays the total memory available in the system

Table 2 Main Menu Selections

IDE Adapters

The IDE adapters control the hard disk drive. Use a separate sub menu to configure each hard disk drive.

Figure 2 shows the IDE primary master sub menu.

CMOS Setup Utility – Copyright © 1984-1998 Award
Software

IDE Primary Master

IDE HDD Auto-Detection	Press Enter	Item Help
IDE Primary Master Access Mode	Auto 2557 MB Auto	Menu Level >>
Cylinder	4956	To auto-detect the HDD's size, head... on this channel
Head	16	
Precomp	0	
Landing Zone Sector	4955 63	
↑↓←→Move Enter: Select +/-/PU/PD: Value F10:Save ESC: Exit F1:General Help F5:Previous Values F6:Fail-safe defaults F7:Optimized Defaults		

Figure 2 IDE Primary Master sub menu

Use the legend keys to navigate through this menu and exit to the main menu. Use Table 3 to configure the hard disk.

Item	Options	Description
IDE HDD Auto-detection	Press Enter	Press Enter to auto-detect the HDD on this channel. If detection is successful, it fills the remaining fields on this menu.
IDE Primary Master	None Auto Manual	Selecting 'manual' lets you set the remaining fields on this screen. Selects the type of fixed disk. "User Type" will let you select the number of cylinders, heads, etc. Note: PRECOMP=65535 means NONE !
Capacity	Auto Display your disk drive size	Disk drive capacity (Approximated). Note that this size is usually slightly greater than the size of a formatted disk given by a disk checking program.
Access Mode	Normal LBA Large Auto	Choose the access mode for this hard disk
The following options are selectable only if the 'IDE Primary Master' item is set to 'Manual'		
Cylinder	Min = 0 Max = 65535	Set the number of cylinders for this hard disk.
Head	Min = 0 Max = 255	Set the number of read/write heads
Precomp	Min = 0 Max = 65535	**** Warning: Setting a value of 65535 means no hard disk
Landing zone	Min = 0 Max = 65535	****
Sector	Min = 0 Max = 255	Number of sectors per track

Table 3 Hard disk selections

Advanced BIOS Features

This section allows you to configure your system for basic operation. You have the opportunity to select the system's default speed, boot-up sequence, keyboard operation, shadowing and security.

Advanced BIOS Features

Virus Warning	Enabled	Item Help <hr/> <hr/> Menu Level ➤ Allows you to choose the VIRUS warning feature for IDE Hard Disk boot sector protection. If this function is enabled and someone attempt to write data into this area, BIOS will show a warning message on screen and alarm beep
CPU Internal Cache	Enabled	
External Cache	Enabled	
CPU L2 Cache ECC Checking	Enabled	
Quick Power On Self Test	Disabled	
First Boot device	Floppy	
Second Boot device	HDD-0	
Third Boot device	Floppy	
Boot other device	Disabled	
Swap Floppy Drive	Disabled	
Boot Up Floppy Seek	Disabled	
Boot Up NumLock Status	Off	
Gate A20 Option	Normal	
Typematic Rate Setting	Disabled	
Typematic Rate (Chars/Sec)	6	
Typematic Delay (Msec)	250	
Security Option	Setup	
OS Select For DRAM > 64MB	Non-OS2	
Report NO FDD For Win 95	No	
↑↓←→Move Enter: Select +/-/PU/PD: Value F10:Save ESC: Exit F1:General Help F5:Previous Values F6:Fail-safe defaults F7:Optimized Defaults		

Virus Warning

Allows you to choose the VIRUS Warning feature for IDE Hard Disk boot sector protection. If this function is enabled and someone attempt to write data into this area, BIOS will show a warning message on screen and alarm beep.

Enabled	Activates automatically when the system boots up causing a warning message to appear when anything attempts to access the boot sector or hard disk partition table.
Disabled	No warning message will appear when anything attempts to access the boot sector or hard disk partition table.

CPU Internal Cache/External Cache

These two categories speed up memory access. However, it depends on CPU/chipset design.

Enabled	Enable cache
Disabled	Disable cache

CPU L2 Cache ECC Checking

This item allows you to enable/disable CPU L2 Cache ECC checking.

The choice: Enabled, Disabled.

Processor Number Feature

Some of the new generation of socket-370 processors are installed with a unique processor number. This number may be used for verification in internet transactions and e-commerce. If you prefer not to use or distribute the unique processor number, use this item to suppress the processor number.

The choice: Enable, Disable.

Quick Power On Self Test

This category speeds up Power On Self Test (POST) after you power up the computer. If it is set to Enable, BIOS will shorten or skip some check items during POST.

Enabled	Enable quick POST
Disabled	Normal POST

First/Second/Third/Other Boot Device

The BIOS attempts to load the operating system from the devices in the sequence selected in these items.

The choice: Floppy, LS/ZIP, HDD, SCSI, CDROM, Disabled.

Swap Floppy Drive

If the system has two floppy drives, you can swap the logical drive name assignments.

The choice: Enabled/Disabled.

Boot Up Floppy Seek

Seeks disk drives during boot up. Disabling speeds boot up.

The choice: Enabled/Disabled.

Boot Up NumLock Status

Select power on state for NumLock.

The choice: Enabled/Disabled.

Gate A20 Option

Select if chipset or keyboard controller should control GateA20.

Normal	A pin in the keyboard controller controls GateA20
Fast	Lets chipset control GateA20

Typematic Rate Setting

Key strokes repeat at a rate determined by the keyboard controller. When enabled, the typematic rate and typematic delay can be selected.

The choice: Enabled/Disabled.

Typematic Rate (Chars/Sec)

Sets the number of times a second key stroke is repeated when the key is held down.

The choice: 6, 8, 10, 12, 15, 20, 24, 30.

Typematic Delay (Msec)

Sets the delay time after the key is held down before it begins to repeat the keystroke.

The choice: 250, 500, 750, 1000.

Security Option

Select whether the password is required every time the system boots or only when you enter setup.

System	The system will not boot and access to Setup will be denied if the correct password is not entered at the prompt.
Setup	The system will boot, but access to Setup will be denied if the correct password is not entered at the prompt.

Note

To disable security, select PASSWORD SETTING at Main Menu and then you will be asked to enter password. Do not type anything and just press Enter, it will disable security. Once the security is disabled, the system will boot and you can enter Setup freely.

OS Select For DRAM > 64MB

Select the operating system that is running with greater than 64MB of RAM on the system.

The choice: Non-OS2, OS2.

Report No FDD For Win 95

Whether report no FDD for Win 95 or not.

The choice: Yes, No.

Video BIOS Shadow

This item allows the video BIOS to be copied to system memory for faster performance.

The choice: Enable, Disable.

Advanced Chipset Features

CMOS Setup Utility – Copyright © 1984 – 1998 Award Software

Advanced Chipset Features

Advanced DRAM Control 1	Press Enter	Item Help
Advanced DRAM Control 2	Press Enter	
System BIOS Cacheable	Disabled	
Video BIOS Cacheable	Disabled	Menu Level >
Memory Hole At 15M-16M	Enabled	
AGP Aperture Size	64MB	
Graphic Window WR Combin	Enable	
Concurrent function (MEM)	Enabled	
Concurrent function (PCI)	Enabled	
CPU Pipeline Control	Enabled	
PCI Delay Transaction	Enabled	
Power-supply Type	AT	
Memory Parity Check	Enabled	
↑↓←→Move Enter: Select +/-/PU/PD: Value F10:Save ESC: Exit F1:General Help F5:Previous Values F6:Fail-safe defaults F7:Optimized Defaults		

This section allows you to configure the system based on the specific features of the installed chipset. This chipset manages bus speeds and access to system memory resources, such as DRAM and the external cache. It also coordinates communications between the conventional ISA bus and the PCI bus. It must be stated that these items should never need to be altered. The default settings have been chosen because they provide the best operating conditions for your system.

Advanced DRAM Control 1/2 Settings

The first chipset settings deal with CPU access to dynamic random access memory (DRAM). The default timings have been carefully chosen and should only be altered if data is being lost. Such a scenario might well occur if your system had mixed speed DRAM chips installed so that greater delays may be required to preserve the integrity of the data held in the slower memory chips.

Auto Configuration

This item will automatically configure the chipset timing. Select 'Manual' to enter a specific timing value.

The choice: Manual, Auto, 100MHZ, 133MHZ.

SDRAM RAS Active Time

This item defines SDRAM ACT to PRE command period.

The choice: 6T, 7T, 5T, 4T.

SDRAM RAS Precharge Time

This item defines SDRAM PRE to ACT command period.

The choice: 3T, 2T, 4T, Reserved.

RAS to CAS Delay

This item defines SDRAM ACT to Read/Write command period.

The choice: 3T, 2T, 4T, Reserved.

Dram Background Command

This item is lead-off time control for DRAM background command. When 'Delay 1T' is selected, background commands are issued one clock after the memory address (MA) command has been issued. When 'Normal' is selected, background commands and MA are issued at the same time.

The choice: Delay 1T, Normal.

LD-Off Dram RD/WR Cycles

The item is lead-off time control for DRAM Read/Write Cycles. When 'Delay 1T' is selected, the memory read/write command is issued one clock pulse after the memory address (MA) is issued. When 'Normal' is selected, the read/write command and MA are issued at the same time.

The choice: Delay 1T, Normal.

Write Recovery Time

This item defines the Data-in to PRE command period.

The choice: 1T, 2T

VCM REF To ACT/REF Delay

This item defines VCM REF to REF/ACT command period.

The choice: 10T, 9T.

VCM ACCT To ACT/REF Delay

This item defines VCM ACT to ACT/REF command period.

The choice: 10T, 9T, 8T, Reserved.

Early CKE Delay 1T Cntrl

When this item is enabled, CKE is driven out from flip-flop. It is used when system operates under low frequency and CKE delay adjustment method defined in the 'Early CKE Delay Adjust' setting, which cannot meet the setup time and hold time requirements.

The choice: Normal, Delay 1T.

Early CKE Delay Adjust

This item controls the timing for CKE. Various delay options are provided to ensure that CKE can meet the SDRAM setup time and hold time specification when CKE is driven out.

The choice: 1ns, 2ns, 3ns, 4ns, 5ns, 6ns, 7ns, 8ns.

Mem Command Output Time

This item is to control the timing to drive memory command onto memory bus.

The choice: Normal, Delay 1T.

SDRAM/VCM CAS Latency

When synchronous DRAM is installed, the number of clock cycles of CAS latency depends on the DRAM timing.

The choice: 2, 3, SPD

SDRCLK Control

This item controls the phase of SDRCLK that lags behind SDCLK.

The choice: Enabled, Disabled.

SDWCLK Control CS#/CKE

This item controls the phase of SDWCLK used for chip set select signals pin that lags ahead SDCLK.

The choice: Enabled, Disabled.

SDWCLK Control MA/SRAS

This item controls the phase of SDWCLK used for MA/ SRAS signals that lags ahead SDCLK.

The choice: +5.0ns~-2.5ns (Default 0.0ns)

SDWCLK Control DQM/MD

This item controls the phase of SDWCLK used for DQM/MD signals that lags ahead SDCLK.

The choice: +5.0ns~-2.5ns (Default 0.0ns)

EGMRCLK Control

This item controls the phase of EGMRCLK that lags behind SDCLK.

The choice: -1.0ns~+6.5ns (Default 0.0ns)

EGMWCLK Control

This item controls the phase of EGMWCLK that lags ahead SDCLK.

The choice: +5.0ns~-2.5ns (Default 0.0ns)

System BIOS Cacheable

Selecting 'Enabled' allows caching of the system BIOS ROM at F0000h-FFFFFh, resulting in better system performance. However, if any program writes to this memory area, a system error may result.

The choice: Enabled, Disabled.

Video RAM Cacheable

Selecting 'Enabled' allows caching of the video RAM, resulting in better system performance. However, if any program writes to this memory area, a system error may result.

The choice: Enabled, Disabled.

Memory Hole at 15M-16M

You can reserve this area of system memory for ISA adapter ROM. When this area is reserved, it cannot be cached. The user information of peripherals that need to use this area of system memory usually discusses their memory requirements.

The choice: Enabled, Disabled.

AGP Aperture Size

This item allows you to select the size of Accelerated Graphics Port (AGP) aperture. The aperture is a portion of the PCI memory address range dedicated for graphics memory address space. Host cycles that hit the aperture range are forwarded to the AGP without any translation.

The choice: 4M, 8M, 16M, 32M, 64M, 128M, 256M.

Graphic Window WR Combin

Use this item to enable or disable CPU support for WR Combin.

The choice: Enable, Disable .

Concurrent Function (MEM)

This item allows you to set the CPU & PCI Masters Concurrently Access Memory Function. Selecting 'Enabled' allows CPU access memory cycles and PCI masters access memory cycles to be concurrently issued onto host bus and PCI bus, respectively. The memory access cycles will be rearranged by SIS630 to write to memory sequentially.

The choice: Enabled, Disabled

Concurrent Function (PCI)

This item allows you to set the CPU & PCI Masters Concurrently Access PCI Bus Function. Selecting 'Enabled' allows CPU access PCI bus cycle and PCI masters access memory cycles to be concurrently issued onto host bus and PCI bus, respectively.

The choice: Enabled, Disabled.

CPU Pipeline Control

When this item is enabled, only one pending cycle is allowed at one time.

When this item is disabled, there might be more than two pending cycles at one time depends on the CPU behavior.

The choice: Enabled, Disabled.

PCI Delay Transaction

If the chipset has an embedded 32-bit write buffer to support delay transaction cycles, you can enable this item to provide compliance with PCI Ver.2.1 specifications. We recommend that you leave this item at the default value.

The choice: Enable, Disable.

Power-Supply Type

This item controls the power-supply type to AT or ATX.

The choice: AT, ATX.

Memory Parity Check

Enabled this item to test the boot-up memory.

The choice: Enabled, Disabled.

Integrated Peripherals

CMOS Setup Utility – Copyright © 1984 – 1998 Award Software

Integrated Peripherals

		Item Help
SIS 630 OnChip IDE Device	Press Enter	
SIS 630 OnChip PCI Device	Press Enter	
Super I/O Device	Press Enter	
USB Controller	Enabled	
USB Keyboard Support	Enabled	
Init Display First	PCI Slot	
IDE HDD Block Mode	Enabled	
System Share Memory	8MB	
↑↓←→ Move Enter: Select +/-/PU/PD: Value F10:Save ESC: Exit F1:General Help F5:Previous Values F6:Fail-safe defaults F7:Optimized Defaults		<hr/> Menu Level ➤ If your IDE hard drive supports block mode select Enabled for automatic detection of the optimal number of block read/write per sector the drive can support

SIS 630 OnChip IDE Device**Internal PCI/IDE**

This chipset contains an internal PCI IDE interface with support for two IDE channels.

The choice: Primary, Secondary, Both.

IDE Primary Master/Slave PIO

The four IDE PIO (Programmed Input/Output) fields let you set a PIO mode (0-4) for each of the four IDE devices that the onboard IDE interface supports. Modes 0 through 4 provide successively increased performance. In 'Auto' mode, the system automatically determines the best mode for each device.

The choice: Auto, Mode 0, Mode 1, Mode 2, Mode 3, and Mode 4.

Primary Master/Slave UltraDMA

UDMA (Ultra DMA) is a DMA data transfer protocol that utilizes ATA commands and the ATA bus to allow DMA commands to transfer data at a maximum burst rate of 33 MB/s. When you select *Auto* in the four IDE UDMA fields (for each of up to four IDE devices that the internal PCI IDE interface supports), the system automatically determines the optimal data transfer rate for each IDE device.

The choice: Auto, Disabled.

IDE Burst Mode

Selecting 'Enabled' reduces latency between each drive read/write cycle, but may cause instability in IDE subsystems that cannot support such fast performance. If you are getting disk drive errors, try setting this value to 'Disabled'. This field does not appear when the Internal PCI/IDE field, above, is 'Disabled'.

The choice: Enabled, Disabled.

SIS 630 OnChip PCI Device**SIS-7018 AC97 AUDIO**

Select 'Enabled' to support AC97 Audio.

The choice: Enabled, Disabled.

SIS-900 10/100M ETHERNET

This item provides a total communication solution including 10/100Mb Fast Ethernet for Office requirement and 1Mb HomePNA for Home Networking.

The choice: Enabled, Disabled.

Super I/O Device**Onboard FDC Controller**

Select 'Enabled' if your system has a floppy disk controller (FDC) installed on the system board and you wish to use it. If you install and-in FDC or the system has no floppy drive, select 'Disabled' in this field.

The choice: Enabled, Disabled.

Onboard Serial Port 1/ Port 2/Port 3/Port 4

Select an address and corresponding interrupt for the first and second serial ports.

The choice: 3F8/IRQ4, 2E8/IRQ3, 3E8/IRQ4, 2F8/IRQ3, Disabled, Auto.

UART Mode Select

This item allows you to select UART mode.

The choice: Enabled, Disabled.

UR2 Duplex Mode

This item allows you to select the IR half/full duplex function.

The choice: Half, Full.

Onboard Parallel Port 1/Port 2

This item allows you to determine access onboard parallel port controller with which I/O address.

The choice: 3BC/IRQ7, 378/IRQ7, 278/IRQ5, Disabled.

Parallel Port Mode

Select an operating mode for the onboard parallel (printer) port. Select 'Normal', 'Compatible', or 'SPP' unless you are certain your hardware and software both support one of the other available modes.

The choice: SPP, EPP, ECP, ECP+EPP.

ECP Mode Use DMA

Select a DMA channel for the parallel port for use during ECP mode.

The choice: 3, 1.

USB Controller

Select 'Enabled' if your system contains a Universal Serial Bus (USB) controller and you have USB peripherals.

Choices are: Enabled, Disabled.

USB Keyboard Support

Select 'Enabled' if your system contains a Universal Serial Bus (USB) controller and you have a USB keyboard.

Choices are: Enabled, Disabled.

IDE HDD Block Mode

Block mode is also called block transfer, multiple commands, or multiple sector read/write. If your IDE hard drive supports block mode (most new drives do), select 'Enabled' for automatic detection of the optimal number of block read/writes per sector the drive can support.

The choice: Enabled, Disabled.

Init Display First

This item allows you to decide to active which bus first (PCI Slot or AGP first).

The choice: PCI Slot, AGP.

System Share Memory Size

This item defines the System Share Memory Size for video.

The choice:2MB,4MB,16MB, 32MB, 64MB, 2+2MB, 4+4MB, 8+8MB,16+16MB,32+32MB.

Power Management Setup

The Power Management Setup allows you to configure you system to most effectively save energy while operating in a manner consistent with your own style of computer use.

CMOS Setup Utility – Copyright © 1984 – 1998 Award Software

Power Management Setup

ACPI function	Enabled	Item Help
ACPI Suspend Type	S3(STR)	
Video Off Option	Susp,Stby -> Off	
Video Off Method	V/H SYNC_Blank	Menu Level >
Switch Function	Break/Wake	
Hot Key Function As	Power Off	
HDD Off After	Disable	
Power Button Override	Instant Off	
KB Power On Password	Disable	
PM Wake Up Events	Press Enter	
Power Up by Alarm	Press Enter	
↑↓←→Move Enter: Select +/-/PU/PD: Value F10:Save ESC: Exit F1:General Help F5:Previous Values F6:Fail-safe defaults F7:Optimized Defaults		

ACPI Function

This item allows you to enable/disable the Advanced Configuration and Power Management (ACPI).

The choice: Enabled, Disabled.

ACPI Suspend Type

This item allows you to S1 (Power ON Suspend)/S3 (Suspend To RAM) the Advanced Configuration and Power Management (ACPI).

The choice: S1 (POS), S3 (STR).

Video Off Option

When enabled, this feature allows the VGA adapter to operate in a power saving mode.

Always on	Monitor will remain on during power saving modes.
Suspend→Off	Monitor blanked when the systems enters the Suspend mode.
Susp.Stby→ Off	Monitor blanked when the system enters either Suspend or Standby modes
All Modes	Monitor blanked when the system enters any power saving mode.

Video Off Method

This determines the manner in which the monitor is blanked.

V/H SYNC+Blank	This selection will cause the system to turn off the vertical and horizontal synchronization ports and write blanks to the video buffer.
Blank Screen	This option only writes blanks to the video buffer.
DPMS	Select this option if your monitor supports the Display Power Management Signaling (DPMS) standard of the Video Electronics Standards to select video power management values.

Switch Function

You can choose whether or not to permit your system to enter complete Suspend mode. Suspend mode offers greater power savings, with a correspondingly longer awakening period..

The choice: Break/Wake, Disabled.

Hot Key Function As

Select 'Enabled' if your system has a hot key for soft power off.

The choice: Enabled, Disabled.

HDD Off After

By default, this item is disabled, meaning that no matter the mode the rest of the system, the hard drive will remain ready. Otherwise, you have a range of choices from 1 to 15 minutes or ‘Suspend’. This means that you can elect to have your hard disk drive be turned off after a selected number of minutes or when the rest of the system goes into a Suspend mode.

Power Button Over Ride

You could press the power button for more than four seconds forces the system to enter the Soft-Off state when the system has “hung.”

The choice: Soft-Off, Delay 4 Sec.

PM Wake Up Events

IRQ [3-7,9-15], NMI

The following is a list of IRQ’s, Interrupt ReQuests, which can be exempted much as the COM ports and LPT ports above can. When an I/O device wants to gain the attention of the operating system, it signals this by causing an IRQ to occur. When the operating system is ready to respond to the request, it interrupts itself and performs the service.

As above, the choices are On and Off.

When set to ‘On’, activity will neither prevent the system from going into a power management mode nor awaken it.

- **IRQ [3-7, 9-15], NMI**
- **IRQ 8 Break Suspend:** You can ‘Enable’ or ‘Disable’ monitoring of IRQ8 (the Real Time Clock) so it does not awaken the system from Suspend mode.

Ring/PCIPME Power Up Control

When you select ‘Enabled’, a signal from ring/PCIPME returns the system to Full On state.

The choice: Enabled, Disabled.

KB Power On Password

This item can be used to prompt the user for a password when the system power is resumed by keyboard action.

The choice: Disable, Enable.

Power Up by Alarm

When you select ‘Enabled’, the following fields appear. They let you set the alarm that returns the system to Full On state.

Date (of Month) Alarm lets you select a day from 1 to 31. Time Alarm lets you select a time for the alarm in hours, minutes, and seconds .

The choice: Enabled, Disabled.

PnP/PCI Configuration Setup

This section describes configuring the PCI bus system. PCI, or Personal Computer Interconnect, is a system which allows I/O devices to operate at speeds nearing the speed the CPU itself uses when communicating with its own special components. This section covers some very technical items and it is strongly recommended that only experienced users should make any changes to the default settings.

CMOS Setup Utility – Copyright © 1984-1998 Award Software

PnP/PCI Configurations

Reset Configuration Data	Disabled	Item Help
Resources Controlled By	Auto(ESCD)	-----
➤ IRQ Resources	Press Enter	Menu Level ➤
PCI/VGA Palette Snoop	Disabled	Default is Disabled. Select Enabled to reset Extended System Configuration Data(ESCD) when you exit Setup if you have installed a new add-on and the system reconfiguration has caused such a serious conflict that the OS cannot boot
↑↓←→Move Enter: Select +/-/PU/PD: Value F10:Save ESC: Exit F1:General Help F5:Previous Values F6:Fail-safe defaults F7:Optimized Defaults		

Reset Configuration Data

Normally, you leave this field Disabled. Select Enabled to reset Extended System Configuration Data (ESCD) when you exit Setup if you have installed a new add-on and the system reconfiguration has caused such a serious conflict that the operating system can not boot.

The choice: Enabled, Disabled.

Resource controlled by

The Award Plug and Play BIOS has the capacity to automatically configure all of the boot and Plug and Play compatible devices. However, this capability means absolutely nothing unless you are using a Plug and Play operating system such as Windows®95. If you set this field to “manual” choose specific resources by going into each of the sub menu that follows this field (a sub menu is preceded by a “➤”).

The choice: Auto(ESCD), Manual.

IRQ Resources

When resources are controlled manually, assign each system interrupt a type, depending on the type of device using the interrupt.

IRQ3/4/5/7/9/10/11/12/14/15 assigned to

This item allows you to determine the IRQ assigned to the ISA bus and is not available to any PCI slot. Legacy ISA for devices compliant with the original PC AT bus specification, PCI/ISA PnP for devices compliant with the Plug and Play standard whether designed for PCI or ISA bus architecture.

The choice: Legacy ISA and PCI/ISA PnP.

PCI/VGA Palette Snoop

Leave this field set to 'Disabled'.

Choices are Enabled, Disabled.

PC Health Status

This section helps you to get more information about your system including CPU temperature, FAN speed and voltages. It is recommended that you contact with your motherboard supplier to get proper value about your setting of the CPU temperature.

CMOS Setup Utility – Copyright © 1984-1998 Award
Software

PC Health Status

Voltage 0	1.65V	Item Help
Voltage 1	2.49V	-----
Voltage 2	3.37V	Menu Level >
Voltage 3	4.97V	
Voltage 4	11.96V	
Voltage 5	3.29V	
Voltage 6	-11.45V	
Voltage 7	4.65V	
Voltage Battery	2.91V	
Temperature1	- 55□	
Temperature2	40□	
Temperature3	79□	
FAN 1 Speed	4153 RPM	
FAN 2 Speed	0 RPM	
↑↓←→ Move Enter: Select +/-/PU/PD: Value F10:Save ESC: Exit F1:General Help F5:Previous Values F6:Fail-safe defaults F7:Optimized Defaults		

Voltage 0/1/2/3/4/5/6/7

The chipset reserves 8 inputs for monitoring working voltages from various sources in the system. These voltages may include CPU voltage, power pins of the ATX power (+/-12V, +/-5V, 3.3V...) and others.

Generic names (Voltage 0-9) are given to these items because where these pins are connected depends on different platforms you are using.

Voltage Battery

Monitor the output voltage of the RTC battery.

Temperature 1/2/3

The chipset reserves three inputs for monitoring temperatures that are typically the CPU and system temperatures.

Generic names are given as Voltage 0-7.

Fan 1/2 Speed

The chipset reserves two inputs for monitoring FAN speeds in the system. Usually, one FAN is applied to cool down the CPU and the other one is applied by different purpose.

Generic names are given as Voltage 0-7.

Frequency/Voltage Control

CMOS Setup Utility – Copyright © 1984-1998 Award Software

Frequency/Voltage Control

Auto Detect DIMM/PCI Clk	Disabled	Item Help
Spread Spectrum	Disabled	-----
CPU HOST/SDRAM/PCI Clock	Default	Menu Level >
CPU Clock Ratio	By H/W	
↑↓←→ Move Enter: Select +/-/PU/PD: Value F10:Save ESC: Exit F1:General Help F5:Previous Values F6:Fail-safe defaults F7:Optimized Defaults		

Auto Detect DIMM/PCI CLK

This item allows you to enable/disable auto detect DIMM/PCI Clock.

The choice: Enabled, Disabled.

Spread Spectrum

This item allows you to enable/disable the spread spectrum modulate.

The choice: Enabled, Disabled.

CPU Host/DRAM/PCI Clock

This item allows you to select CPU/PCI frequency.

The choice: Default, 66/66/33MHz, 133/133/33MHz, 100/100/33MHz.

CPU Clock Ratio

This item allows you to select CPU clock ratio.

The choice: By H/W 3, 3.5, 4, 4.5, 5, 5.5, 6, 6.5, 7, 7.5, 8.

Defaults Menu

Selecting “Defaults” from the main menu shows you two options which are described below.

Load Fail-Safe Defaults

When you press Enter on this item you get a confirmation dialog box with a message similar to:

Load Fail-Safe Defaults (Y/N) ? N

Pressing ‘Y’ loads the BIOS default values for the most stable, minimal-performance system operations.

Load Optimized Defaults

When you press Enter on this item you get a confirmation dialog box with a message similar to:

Load Optimized Defaults (Y/N) ? N

Pressing ‘Y’ loads the default values that are factory settings for optimal performance system operations.

Supervisor/User Password Setting

You can set either supervisor or user password, or both of them. The differences between are:

supervisor password:

Can enter and change the options of the setup menus.

user password:

Just can only enter but do not have the right to change the options of the setup menus. When you select this function, the following message will appear at the center of the screen to assist you in creating a password.

ENTER PASSWORD:

Type the password, up to eight characters in length, and press Enter. The password typed now will clear any previously entered password from CMOS memory. You will be asked to confirm the password. Type the password again and press Enter. You may also press Esc to abort the selection and not enter a password.

To disable a password, just press Enter when you are prompted to enter the password. A message will confirm the password will be disabled. Once the password is disabled, the system will boot and you can enter Setup freely.

PASSWORD DISABLED.

When a password has been enabled, you will be prompted to enter it every time you try to enter Setup. This prevents an unauthorized person from changing any part of your system configuration.

Additionally, when a password is enabled, you can also require the BIOS to request a password every time your system is rebooted. This would prevent unauthorized use of your computer.

You determine when the password is required within the BIOS Features Setup Menu and its Security option. If the Security option is set to password will be required both at boot and at entry to Setup. If set to 'Setup', prompting only occurs when trying to enter Setup.

Exit Selecting

Save & Exit Setup

Pressing Enter on this item asks for confirmation:

Save to CMOS and EXIT (Y/N)? Y

Pressing 'Y' stores the selections made in the menus in CMOS – a special section of memory that stays on after you turn your system off. The next time you boot your computer, the BIOS configures your system according to the Setup selections stored in CMOS. After saving the values the system is restarted again.

Exit Without Saving

Pressing Enter on this item asks for confirmation:

Quit without saving (Y/N)? Y

This allows you to exit Setup without storing in CMOS any change. The previous selections remain in effect. This exits the Setup utility and restarts your computer.

Appendix A – Watchdog Timer

The Watchdog Timer is a device to ensure that standalone systems can always recover from abnormal conditions that cause the system to crash. These conditions may result from an external EMI or a software bug. When the system stops working, hardware on the board will perform hardware reset (cold boot) to bring the system back to a known state.

Three I/O ports control the operation of Watch-Dog Timer.

440 (hex)	Write	Set Watchdog Time period Enable the refresh the Watchdog Timer.
440 (hex)	Write	Disable the Watch-Dog Timer.

Prior to enable the Watch-Dog Timer, user has to set the time-out period. The resolution of the timer is 1 minute and the range of the timer is from 1 min to 255 min. You need to send the time-out value to the I/O port – 440H, and then enable it by write data from the same I/O port – 440H(value is 01h-ffh). This activates the timer that will eventually time out and reset the CPU board. To ensure that this reset condition won't occur, the Watch-Dog Timer must be periodically refreshed by write the same I/O port 440H(the same value is 01h-ffh). This must be done within the time-out period. (Refer to the example program.) Finally, we have to disable the Watch-Dog timer by write the I/O port -- 440H (value is 0h). Otherwise, the system could reset unconditionally.

- Watch-Dog Timer Type Setting By RESET
- Write port 440: WDT Enable & Time-out Period

PERIOD	Value
1 – 255 min.	01 – FF

- Write port 440: WDT Disable

Function	Value
Disable	00

Example assembly program:

WDT_PORT = 440H

;;INITIAL TIMER COUNTER

MOV DX, WDT_PORT

MOV AL, 1 ;;1 minute

OUT DX, AL ;;start counter

W_LOOP:

MOV DX, WDT_PORT

MOV AL, 0

OUT DX, AL ;;stop counter

MOV DX, WDT_PORT

MOV AL, 1

OUT DX, AL ;;restart counter

;;ADD YOUR APPLICATION HERE

CMP EXIT_AP, 0

JNE W_LOOP

MOV DX, WDT_PORT

MOV AL, 0

OUT DX, AL

;;EXIT AP

Appendix B – Power On Self Test Messages

POST Messages

During the Power On Self Test (POST), if the BIOS detects an error, it will either sound a beep code or display a message.

If a message is displayed, it will be accompanied by:

**PRESS F1 TO CONTINUE, CTRL-ALT-ESC OR DEL TO ENTER
SETUP**

POST Beep

There are two kinds of beep codes in BIOS:

Single long beep followed by three short beeps—This code indicates that a video error has occurred and the BIOS cannot initialize the video screen to display any additional information.

Repeating long beep—The other code indicates that your DRAM error has occurred.

Error Messages

One or more of the following messages may be displayed if the BIOS detects an error during the POST. This list includes messages for both the ISA and the EISA BIOS.

CMOS BATTERY HAS FAILED

CMOS battery is no longer functional. It should be replaced.

CMOS CHECKSUM ERROR

Checksum of CMOS is incorrect. This can indicate that CMOS has become corrupt. This error may have been caused by a weak battery. Check the battery and replace if necessary.

DISK BOOT FAILURE, INSERT SYSTEM DISK AND PRESS ENTER

No boot device was found. This could mean that either a boot drive was not detected or the drive does not contain proper system boot files. Insert a system disk into Drive A: and press Enter. If you assumed the system would boot from the hard drive, make sure the controller is inserted correctly and all cables are properly

attached. Also be sure the disk is formatted as a boot device. Then reboot the system.

DISKETTE DRIVES OR TYPES MISMATCH ERROR - RUN SETUP

Type of diskette drive installed in the system is different from the CMOS definition. Run Setup to reconfigure the drive type correctly.

DISPLAY SWITCH IS SET INCORRECTLY

Display switch on the motherboard can be set to either monochrome or color. This indicates the switch is set to a different setting than indicated in Setup. Determine which setting is correct, and then either turn off the system and change the jumper, or enter Setup and change the VIDEO selection.

DISPLAY TYPE HAS CHANGED SINCE LAST BOOT

Since last powering off the system, the display adapter has been changed. You must configure the system for the new display type.

EISA Configuration Checksum Error PLEASE RUN EISA CONFIGURATION UTILITY

The EISA non-volatile RAM checksum is incorrect or cannot correctly read the EISA slot. This can indicate either the EISA non-volatile memory has become corrupt or the slot has been configured incorrectly. Also be sure the card is installed firmly in the slot.

EISA Configuration Is Not Complete PLEASE RUN EISA CONFIGURATION UTILITY

The slot configuration information stored in the EISA non-volatile memory is incomplete.

Note

When either of these errors appear, the system will boot in ISA mode, which allows you to run the EISA Configuration Utility.

ERROR ENCOUNTERED INITIALIZING HARD DRIVE

Hard drive cannot be initialized. Be sure the adapter is installed correctly and all cables are correctly and firmly attached. Also be sure the correct hard drive type is selected in Setup.

ERROR INITIALIZING HARD DISK CONTROLLER

Cannot initialize controller. Make sure the cord is correctly and firmly installed in the bus. Be sure the correct hard drive type is selected in Setup. Also check to see if any jumper needs to be set correctly on the hard drive.

FLOPPY DISK CNTRLR ERROR OR NO CNTRLR PRESENT

Cannot find or initialize the floppy drive controller. make sure the controller is installed correctly and firmly. If there are no floppy drives installed, be sure the Diskette Drive selection in Setup is set to NONE.

**Invalid EISA Configuration
PLEASE RUN EISA CONFIGURATION UTILITY**

The non-volatile memory containing EISA configuration information was programmed incorrectly or has become corrupt. Re-run EISA configuration utility to correctly program the memory.

Note

When this error appears, the system will boot in ISA mode, which allows you to run the EISA Configuration Utility.

KEYBOARD ERROR OR NO KEYBOARD PRESENT

Cannot initialize the keyboard. Make sure the keyboard is attached correctly and no keys are being pressed during the boot.

If you are purposely configuring the system without a keyboard, set the error halt condition in Setup to HALT ON ALL, BUT KEYBOARD. This will cause the BIOS to ignore the missing keyboard and continue the boot.

Memory Address Error at ...

Indicates a memory address error at a specific location. You can use this location along with the memory map for your system to find and replace the bad memory chips.

Memory parity Error at ...

Indicates a memory parity error at a specific location. You can use this location along with the memory map for your system to find and replace the bad memory chips.

MEMORY SIZE HAS CHANGED SINCE LAST BOOT

Memory has been added or removed since the last boot. In EISA mode use Configuration Utility to reconfigure the memory configuration. In ISA mode enter Setup and enter the new memory size in the memory fields.

Memory Verify Error at ...

Indicates an error verifying a value already written to memory. Use the location along with your system's memory map to locate the bad chip.

OFFENDING ADDRESS NOT FOUND

This message is used in conjunction with the I/O CHANNEL CHECK and RAM PARITY ERROR messages when the segment that has caused the problem cannot be isolated.

OFFENDING SEGMENT:

This message is used in conjunction with the I/O CHANNEL CHECK and RAM PARITY ERROR messages when the segment that has caused the problem has been isolated.

PRESS A KEY TO REBOOT

This will be displayed at the bottom screen when an error occurs that requires you to reboot. Press any key and the system will reboot.

PRESS F1 TO DISABLE NMI, F2 TO REBOOT

When BIOS detects a Non-maskable Interrupt condition during boot, this will allow you to disable the NMI and continue to boot, or you can reboot the system with the NMI enabled.

RAM PARITY ERROR - CHECKING FOR SEGMENT ...

Indicates a parity error in Random Access Memory.

**Should Be Empty But EISA Board Found
PLEASE RUN EISA CONFIGURATION UTILITY**

A valid board ID was found in a slot that was configured as having no board ID.

Note

When this error appears, the system will boot in ISA mode, which allows you to run the EISA Configuration Utility.

**Should Have EISA Board But Not Found
PLEASE RUN EISA CONFIGURATION UTILITY**

The board installed is not responding to the ID request, or no board ID has been found in the indicated slot.

Note

When this error appears, the system will boot in ISA mode, which allows you to run the EISA Configuration Utility.

Slot Not Empty

Indicates that a slot designated as empty by the EISA Configuration Utility actually contains a board.

Note

When this error appears, the system will boot in ISA mode, which allows you to run the EISA Configuration Utility.

SYSTEM HALTED, (CTRL-ALT-DEL) TO REBOOT ...

Indicates the present boot attempt has been aborted and the system must be rebooted. Press and hold down the CTRL and ALT keys and press DEL.

**Wrong Board In Slot
PLEASE RUN EISA CONFIGURATION UTILITY**

The board ID does not match the ID stored in the EISA non-volatile memory.

Note

When this error appears, the system will boot in ISA mode, which allows you to run the EISA Configuration Utility. FLOPPY DISK(S) fail (80) → Unable to reset floppy subsystem.

FLOPPY DISK(S) fail (40) → Floppy Type mismatch.

Hard Disk(s) fail (80) → HDD reset failed

Hard Disk(s) fail (40) → HDD controller diagnostics failed.

Hard Disk(s) fail (20) → HDD initialization error.

Hard Disk(s) fail (10) → Unable to recalibrate fixed disk.

Hard Disk(s) fail (08) → Sector Verify failed.

Keyboard is locked out - Unlock the key.

BIOS detect the keyboard is locked. P17 of keyboard controller is pulled low.

Keyboard error or no keyboard present.

Cannot initialize the keyboard. Make sure the keyboard is attached correctly and no keys are being pressed during the boot.

Manufacturing POST loop.

System will repeat POST procedure infinitely while the P15 of keyboard controller is pull low. This is also used for M/B burn in test.

BIOS ROM checksum error - System halted.

The checksum of ROM address F0000H-FFFFFFH is bad.

Memory test fail.

BIOS reports the memory test fail if the onboard memory is tested error.

Appendix C – DMA, IRQ and 1st MB Memory

I/O Address Map

DMA Channel Assignments

DMA Channel #	Description
0	Available
1	Available
2	Floppy Disk (8-bit transfer)
3	Available
4	Cascade for DMA controller 1
5	Sound
6	Available
7	Available

IRQ Mapping Chart

IRQ0	System Timer	IRQ8	RTC Clock
IRQ1	Keyboard	IRQ9	USB LAN
IRQ2	Cascade to IRQ Controller	IRQ10	(COM3)
IRQ3	(COM2)	IRQ11	(COM4)
IRQ4	(COM1)	IRQ12	PS/2 Mouse
IRQ5	Sound (LPT2)	IRQ13	FPU
IRQ6	FDC	IRQ14	Primary IDE
IRQ7	LPT1	IRQ15	Secondary IDE

Note

All IRQs have been assigned to the listed devices, so if you want to add any additional device interface, you must free the unused IRQ first. For example, if you don't use USB K/B or Mouse, then IRQ10 may be set free.

1st MB Memory Address Map

Memory Address	Description
00000-9FFFF	System Board extension for ACPI BIOS
A0000-CBFFF	SIS630
F0000-FFFFFF	System Board extension for ACPI BIOS
CC000-CFFFF	Unavailable for use by device

I/O Addresses

I/O Address Range	Description
000-01F	DMA Controller #1
020-021	Interrupt Controller #1, Master
040-05F	8254 Timer
060-06F	8042 (Keyboard Controller)
070-07F	Real Time Clock, NMI Mask
080-09F	DMA Page Register
0A0-0BF	Interrupt Controller #2
0C0-0DF	DMA Controller #2
0F0	Clear Math Coprocessor Busy
0F1	Reset Math Coprocessor
0F8-0FF	Math Coprocessor
408-409	Digital Input/Output
170-177 1F0-1F7	Fixed Disk
270-27F	Printer Port (LPT2)
2E8-2EF	Serial Port 4 (COM4)
2F8-2FF	Serial Port 2 (COM2)
378-37F	Parallel Printer Port 1 (LPT1)
380-38F	SDLC, Bisynchronous 2
3A0-3AF	Bisynchronous 1
3B0-3BB	SIS 630
3C0-3DF	SIS 630
3E8-3EF	Serial Port 3 (COM3)
3F0-3F7	Diskette Controller
3F8-3FF	Serial Port 1 (COM1)
440	Watch-dog timer

Appendix D – Digital Input/Output

POS-370 has 4-bit IN and 4-bit OUT built-in digital I/O connector. An external power supply to the connector's pin-9 and pin-10 is needed to activate the digital I/O circuit. The external power supply's DC output should be connected with POS-370's power supply at either 5V, 12V or GND to isolate POS-370 main system and the external I/O device.

In case that you cannot find any external power supply to activate the digital I/O, the 5V or 12V of the system's power supply can be used. Under this condition, The digital I/O is not isolated.

- Digital Input/Output Address
- Read port 409: Digital Input

Bit	Value
0 – 3	0 – F

- Write port 408: Digital Output

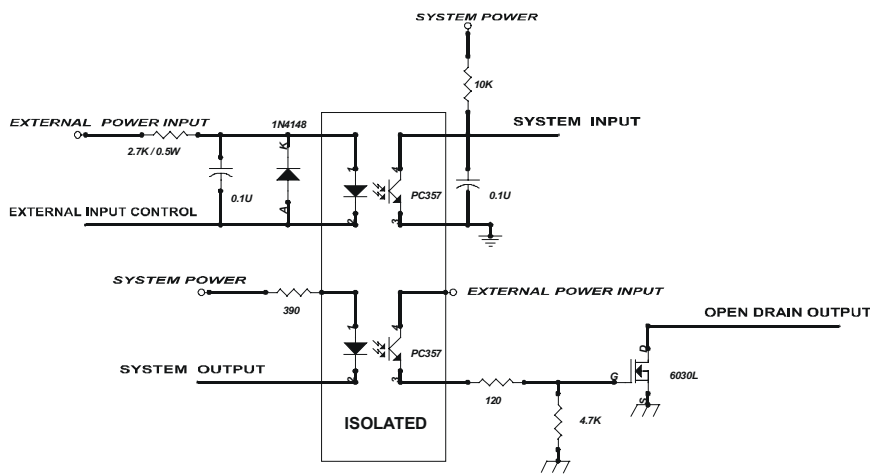
Bit	Value
4 – 7	0 – F

- External Voltage Input: 0V – 30V
(CN37 Pin 10)
- External Power GND Pin
(CN37 PIN 9)
- Digital Input specifications
(If External Voltage is 5V)
 - Logic 0 Level: +1V Max
 - Logic 1 Level: +4V Min
 (If External Voltage is 12V)
 - Logic 0 Level +1V max
 - Logic 1 Level: +11V min
 Input Impedance 2.7K Ω , 0.5 W

- Digital Output specifications:
 Open Drain to 30V Max
 Output Current: 2A Max (per channel)
 (External Power Input is 5V)

 Output Current: 3A Max (per channel)
 (External Power Input is 12V)

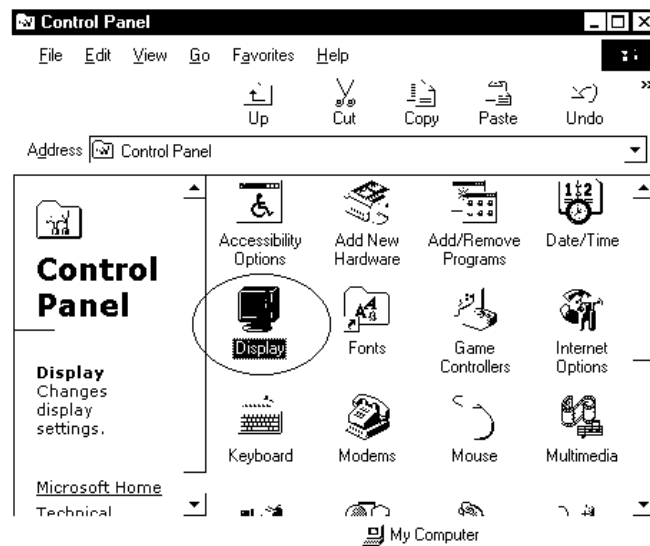
Digital Input/Output Circuit Diagram



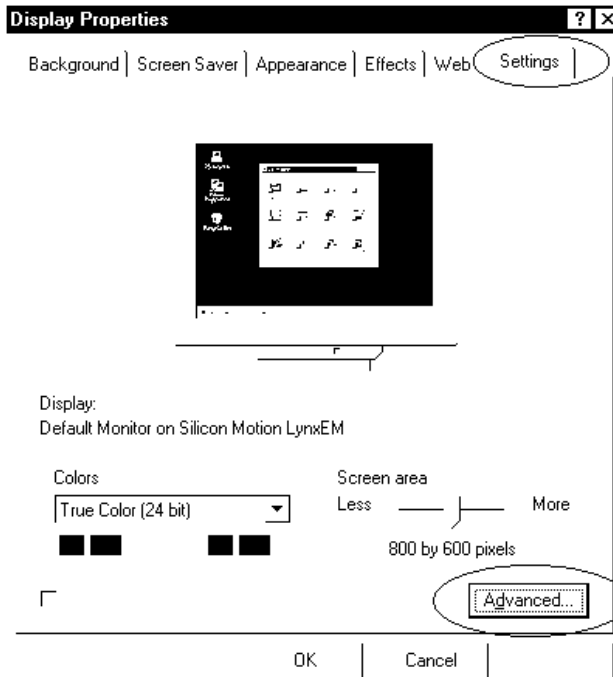
Appendix E – Dual View Setup

The POS-370 is equipped with a OnChip SIS300 VGA chip which supports dual view function. It allows you to run two applications on two monitors respectively. The following will describe how to enable the dual-view function in WINDOWS.

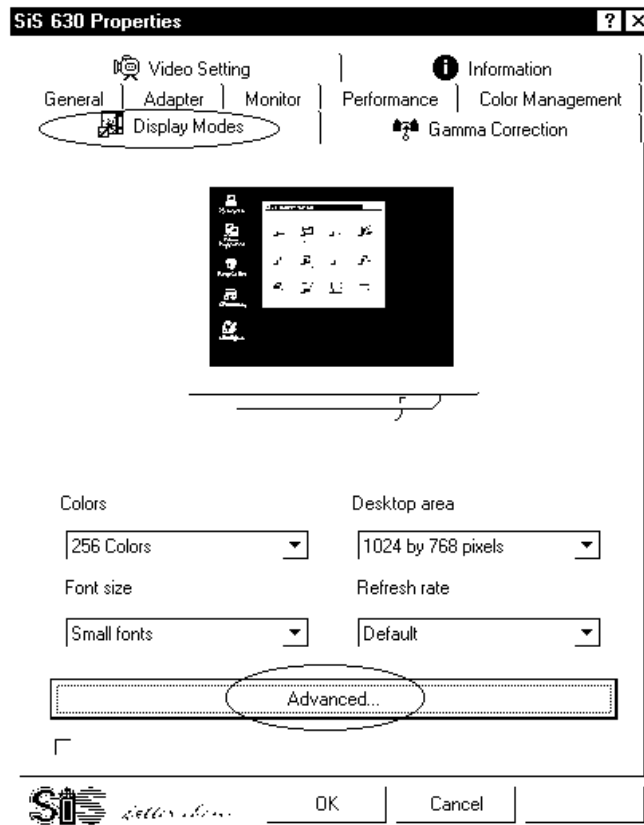
1. Select “Display” in Control Panel and enter “Display Properties”.



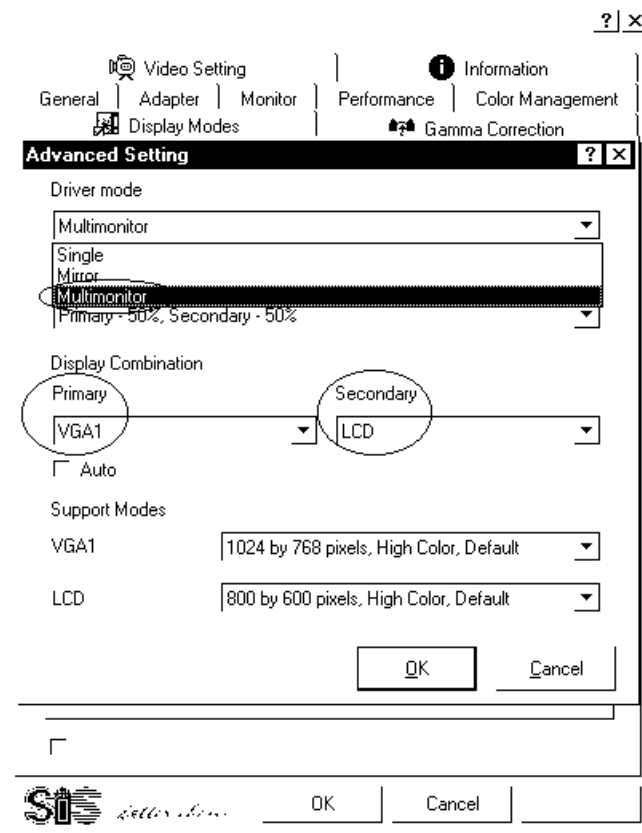
2. Select the item “Settings” and click on the “Advanced” button



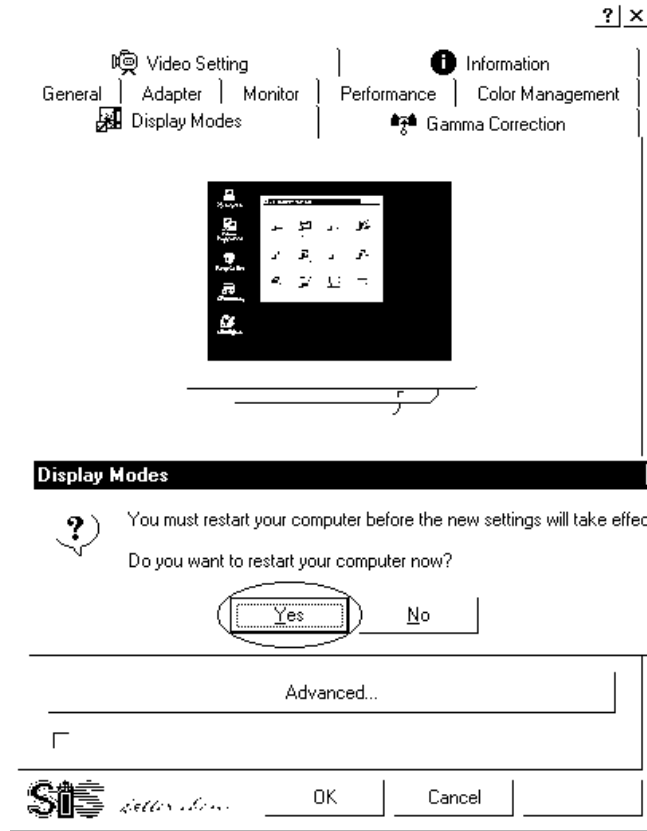
3. Select the item “Display Modes” and click on the “Advanced” button.



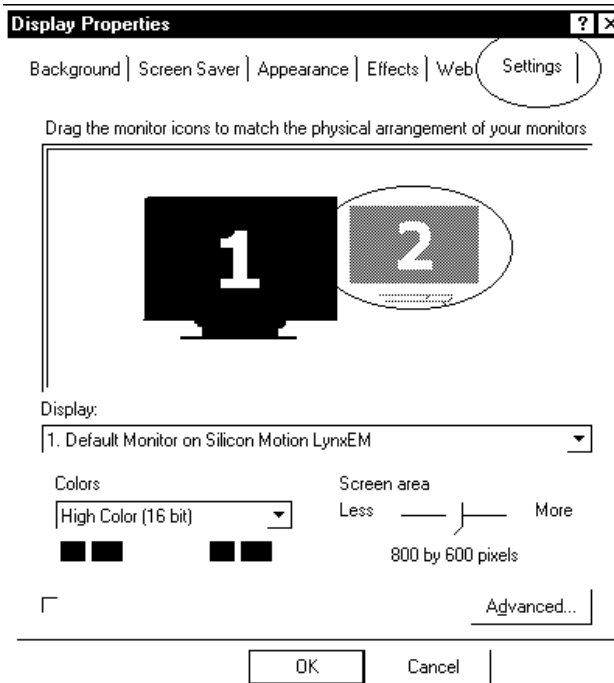
4. Select the item “Multimonitor” in “Driver Mode” and select the Display combination of primary and secondary display.



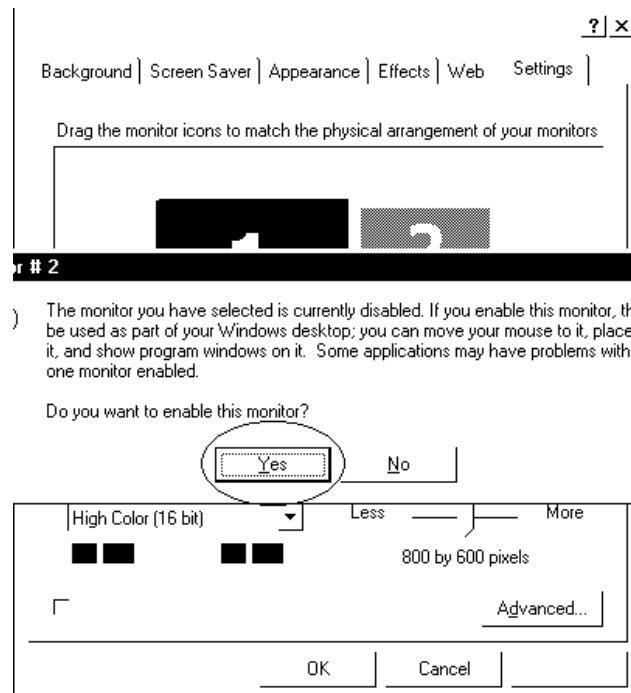
5. After everything is set up, you need to restart your computer to make the new setting take effect.



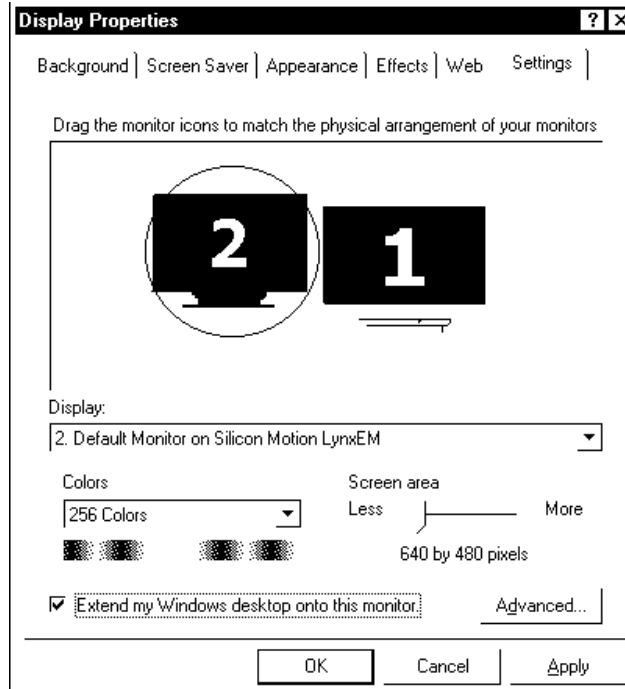
6. Re-enter “Display Properties” and go to the item “Setting”. You will be able to see two monitors showing on the screen.



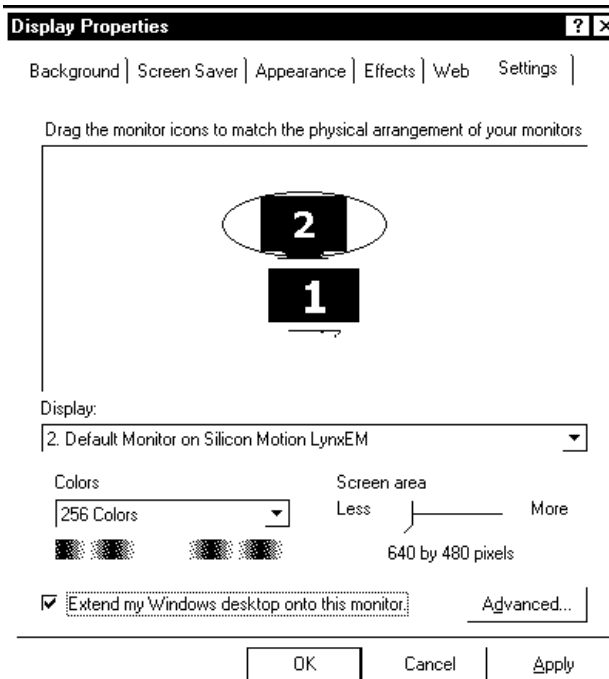
7. Click on the second monitor icon and Windows will ask you if you want to enable the second monitor. Click “Yes” to enable the second monitor.



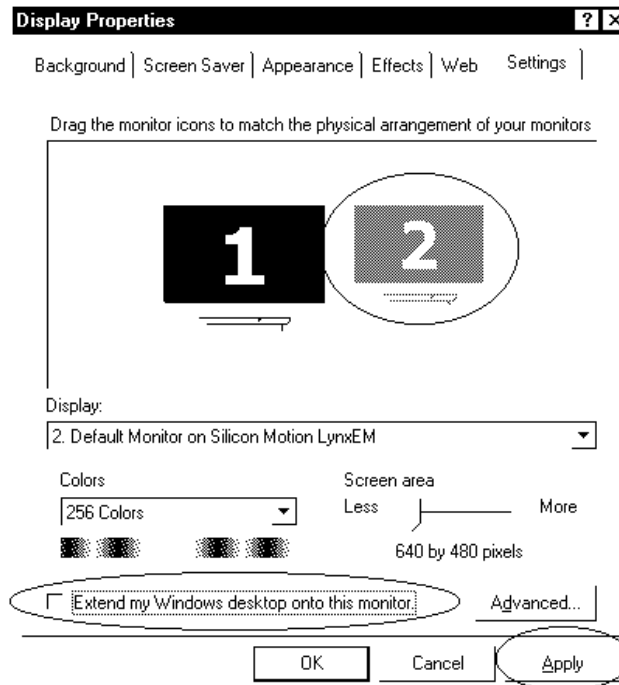
8. After you enable the second monitor, you could see image on the second monitor. Then you can drag the monitor icons to arrange the display of your monitors in the way of left-right or up-down alignment. The screen below is left-and-right alignment.



9. Up-and-down alignment.



10. If you want to disable the dual-view function, just click on the item “Extend my Windows desktop onto this monitor”. The mark before this item will be canceled and the dual-view function is disabled.



Appendix F – How to Upgrade a New BIOS

Please contact the Xycom Automation Application Engineering Department at 734-429-4971 to obtain the latest BIOS.

BIOS Update Procedure

1. Make a boot disk. Go to the DOS command prompt in MS-DOS or Windows 9x and, with an available floppy disk in "A", type "format A: /s" That will format the floppy and transfer the needed system files to it.

Notes

A. This procedure will erase any prior data on that floppy, so please proceed accordingly.

B. Typically four files will be transferred, only COMMAND.COM being visible when running a simple directory listing.

C. Please leave the diskette un-write protected for the balance of this procedure.

2. Download the BIOS upgrade file and awdfash.exe utility from an ICP web site to a temporary directory on your hard drive, or directly to the floppy you made in step 1.

3. Copy (BIOS file and awdfash.exe) two files to the boot floppy.

4. Reboot the system to the DOS command prompt using the boot diskette you just made.

5. At the DOS command prompt, "awdfash filename.xxx", where filename.xxx is the file name of the BIOS file. Press Enter.

6. Your first option, in sequence, will be to save the old BIOS. We recommend that you do that in case, for whatever reason, you decide you don't wish to use the new version once it is installed.

Notes

A. If you decide to save the old BIOS, PLEASE make sure you do NOT save it to the same file name as the new BIOS - if you use the same BIOS name the old file will be written over the new file with NO warning prompt. A simple file name to save the old BIOS to is OLDBIOS.BIN.

B. If you do NOT decide to save the old BIOS, PLEASE at least write down the version number of the old BIOS and store that information with your important computer documents. Enter N (for "no") and skip to step 9.

7. To save the old BIOS, enter Y (for "yes")

8. Enter a name for the OLD BIOS file and press Enter.

Note

PLEASE be sure you do NOT save the old BIOS file to the same file name as the new BIOS - if you use the same BIOS name, the old file will write over the new BIOS file WITHOUT a warning prompt. A simple file name for saving the old BIOS to is OLDBIOS.BIN.

9. Your second option, in sequence, will be whether you want to flash your BIOS. Enter Y (for "yes").

Note

This is the critical step. Once you hit the enter key, do NOT touch the keyboard, the reset button, or power switch while the flashing is in progress. There will be a bar progressing across the screen while the flashing is progressing.

10. When the flashing process is complete, you will be asked to reset or power off the system. Remove the floppy diskette from the floppy drive and either hit the reset button or the power button.

11. Reboot the system and note that the BIOS version on the initial boot-up screen has changed to the new BIOS version. Your BIOS upgrade is now complete.

0Recovering Your Old BIOS

1. Assuming you have the floppy made during the upgrade procedure noted above, boot the system with that diskette in the floppy drive. If you do not have floppy made during the upgrade procedure noted above, you will need to repeat steps 1 through 3 (above) for the version of the BIOS you wish to recover to.
2. Complete steps 4, 5, 6B, 9, 10, and 11 (above) substituting the name of the BIOS you wish to recover for the upgrade BIOS at step 5.

Install screen:

<p>FLASH MEMORY WRITER U6.6 (C)Award Software 1998 All Rights Reserved</p> <p>Flash Type -</p> <p>File Name to Program : <input type="text"/></p> <p>Error Message :</p>
--

Index

A

Arm mounting, 11
AT and ATX power connector, 40
Audio line-in connector, 35
Audio panel connector, 37
Audio speaker output connector, 39
Award BIOS setup, 43

B

BIOS recovery, 103
BIOS setup, 43

- advanced chipset features, 58
- advanced CMOS features, 53
- exit without save, 74
- frequency/voltage control, 72
- getting help, 46
- integrated peripherals, 63
- main menu, 46
- overview, 44
- PC health status, 71
- PnP/PCI configuration setup, 69
- power management setup, 66
- save and exit setup, 74
- standard CMOS features, 49
- starting, 44
- supervisor/user passwords, 73
- using, 45

BIOS upgrades, 101

C

CD-ROM drive, 1
Chassis intrusion detection connector, 39
CMOS setting, 18

COM2 setting, 19

Connectors

AT and ATX power, 40
audio line-in, 35
audio panel, 37
audio speaker, 39
chassis intrusion detection, 39
Digital input/output, 36
fan, 33
flash disk, 38
floppy disk drive, 23
home networking, 34
IrDA infrared interface port, 31
keyboard/mouse, 29
LAN RJ45, 33
LCD backlight, 34
LCD panel, 35
parallel port, 25
PCI E-IDE disk drive, 24
serial ports, 26
temperature, 34
TV-out, 34
USB port, 31
VGA, 31

Cooling fan connector, 33

CPU board, 1, 12

AT and ATX power connector, 40
audio line-in connector, 35
audio panel connector, 37
audio speaker output connector, 39
chassis intrusion detection connector, 39
digital input/output connector, 36
dimensions, 15
external switches and indicators, 30

- Fan connector, 33
 - flash disk connector, 38
 - floppy disk drive connector, 23
 - home networking connector, 34
 - IrDA infrared interface port connector, 31
 - keyboard/mouse connector, 29
 - LAN RJ45 connector, 33
 - layout, 14
 - LCD backlight connector, 34
 - LCD panel connector, 35
 - parallel port connector, 25
 - PCI E-IDE disk drive connector, 24
 - product overview, 12
 - serial port connectors, 26
 - specifications, 3, 12
 - temperature sensor connector, 34
 - TV-out connector, 34
 - USB port connector, 31
 - VGA connector, 31
 - CPU board settings
 - CMOS, 18
 - COM port IR and voltage, 20
 - COM2, 19
 - CPU, 16
 - flash disk, 17
 - IR power, 22
 - LCD panel power, 18
 - LCD panel type, 19
 - USB port power, 22
- D**
- Digital input/output, 88
 - connector, 36
 - Dimensions
 - mechanical, 4
 - Disk drive bay, 2
 - Disk drives, 1
 - Display backlight connector, 34
 - Display, LCD, 1
 - DMA channel assignments, 84
 - DMA, IRQ and memory map, 84
 - Dual view setup, 90
- E**
- Environmental specifications, 2
 - Error messages (power on self test), 78
 - External indicators
 - CPU board, 30
 - External switches and indicators
 - CPU board, 30
- F**
- Fan connector, 33
 - Flash disk
 - connector, 38
 - setting, 17
 - Floppy disk drive, 1
 - connector, 23
- G**
- General information, 1
- H**
- Hard disk drive, 1
 - installation/removal, 7
 - Home networking connector, 34
- I**
- I/O address map, 86
 - Indicators
 - CPU board, 30
 - Infrared interface port
 - connector, 31
 - power setting, 22
 - Input/output address map, 86
 - Installation
 - hard disk drive, 7
 - IR port
 - power setting, 22
 - setting, 20

IrDA infrared interface port
connector, 31

IRQ map, 84

K

Keyboard/mouse
connector, 29

L

LAN RJ45
connector, 33

LCD display, 1
backlight connector, 34
specifications, 2

LCD panel
connector, 35
power setting, 18
type selection, 19

Local area network connector, 33

M

Mechanical dimensions, 4
Memory address (1st MB) map, 85
Memory map, 84

Mounting

arm, 11
panel, 8
wall, 9

Mouse

connector, 29

P

Panel mounting, 8

Parallel port
connector, 25

PCI E-IDE disk drive
connector, 24

POST messages, 78

Power on self test, 78
error messages, 78

POST beep, 78
POST messages, 78

Power supply, 1
specifications, 3

Product information

CPU board, 1, 3, 12
disk drive bay, 2
disk drives, 1
environmental specifications, 2
general, 1
LCD display, 1, 2
mechanical dimensions, 4
power supply, 1, 3
specifications, 2
system setup, 5
touch screen, 1, 2

Product specifications, 2

CPU board, 3
disk drive bay, 2
environmental, 2
LCD display, 2
power supply, 3
touch screen, 2

R

Recovering the old BIOS, 103

Removal

hard disk drive, 7

Reverse side of unit

system setup, 5, 6

S

Screen, touch, 1

Serial ports

connectors, 26
setting
COM port IR and voltage, 20
COM2, 19

Side view of unit

system setup, 6

Speaker output connector, 39

Specifications

CPU board, 3, 12

disk drive bay, 2

environmental, 2

LCD display, 2

power supply, 3

touch screen, 2

Switches

CPU board, 30

System setup, 5

arm mounting, 11

hard disk drive installation/removal, 7

panel mounting, 8

reverse side of unit, 5, 6

side view of unit, 6

wall mounting, 9

T

Temperature sensor connector, 34

Touch screen, 1

specifications, 2

TV-out connector, 34

U

Unit reverse side, 5, 6

Unit side view, 6

Universal serial bus port

connector, 31

power selection, 22

Upgrading the BIOS, 101

USB port

connector, 31

power setting, 22

V

VGA connector, 31

Video output connector, 34

W

Wall mounting, 9

Watchdog timer, 76

141876 (B)

**Xycom Automation,
Inc.**
750 North Maple Rd.
Saline, MI 48176
Phone: 734-429-
4971

