

# PRO-FACE OPERATOR INTERFACES

## PRODUCT DATA SHEET



**AGP3300-T1-D24-D81K**  
**AGP3300-T1-D24-D81C**

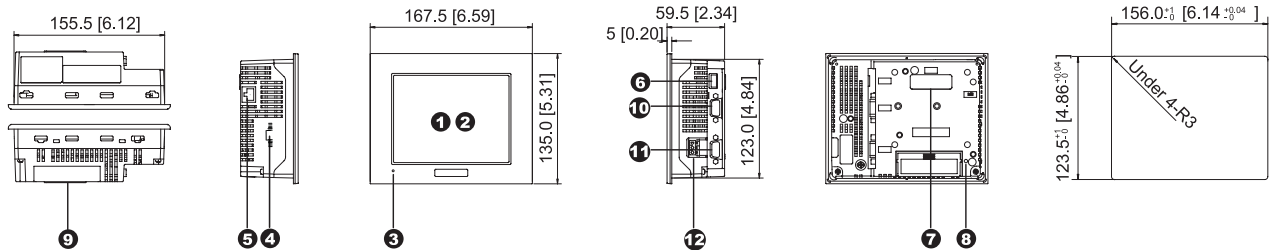


### AGP3300T D81K/D81C Integrated HMI Controller

**5.7" Integrated Control Operator Interface with Built-In Discrete I/O**

- All-in-One HMI and PLC with Built-in 6 discrete inputs and 2 discrete outputs
- 65,536 Colors TFT, Clear, Bright, High-Resolution TFT Display
- 64-bit RISC 133Mhz CPU for Ultra-Fast Screen Refresh and Data Sampling
- No Grid Analog Touch Panel for Improved Visibility and Precise Part Placement
- Supports Up to Two Protocol Drivers Simultaneously
- High Speed Application Transfer, 10 Times Faster than Conventional Operator Interfaces
- 10/100 Base-T Ethernet, USB, Serial (MPI) and CompactFlash™ Communication Interfaces
- High-Definition Part Images and Multi-Language Support

### PRODUCT OVERVIEW

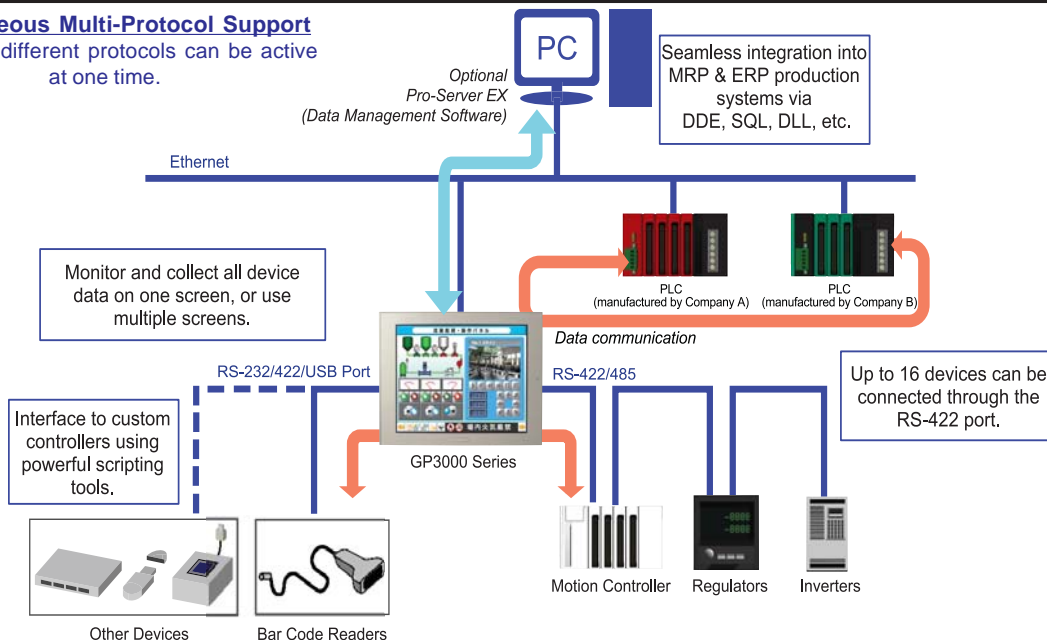


AGP-3300T(AC type) unit shown.

- |   |   |   |
|---|---|---|
| <ul style="list-style-type: none"> <li>1 Display</li> <li>2 Touch Panel</li> <li>3 Status LED</li> <li>4 Discrete I/O Interface<br/>6 Discrete Inputs, 2 Discrete Outputs Built-in.</li> <li>5 10/100 Base-T Ethernet Interface (LAN) (RJ45)</li> </ul> | <ul style="list-style-type: none"> <li>6 USB 1.1 Type A Interface (Host)<br/>One Port for download, bar-code, printer or other USB device</li> <li>7 Optional Communication Module Interface 2</li> <li>8 CF Card Access LED</li> <li>9 CompactFlash™ Card Access Cover (CF cards up to 512MB available)</li> </ul> | <ul style="list-style-type: none"> <li>10 Serial Interface (COM1)<br/>RS-232C/RS-422 serial interface. D-sub 9-pin plug type connector. Communication method is switched via software.</li> <li>11 Serial Interface (COM2)<br/>RS-422/RS-485 MPI (187kbps) serial interface. D-sub 9-pin socket type connector.</li> <li>12 Power Plug Connector</li> </ul> |
|---|---|---|

### COMMUNICATION CAPABILITY

**Simultaneous Multi-Protocol Support**  
 Up to four different protocols can be active at one time.



# AGP3300T D81K/D81C CONTINUED

## INTEGRATED MONITOR CONTROL

### ONLINE LOGIC PROGRAM MONITORING FEATURE

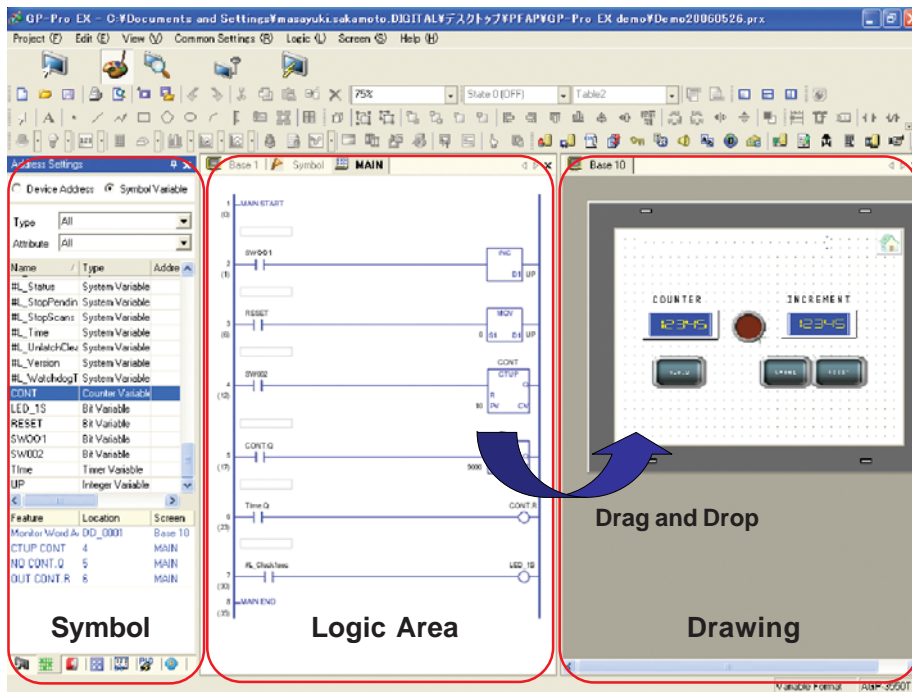


#### Detect Problems Faster

- View logic Programming on HMI while running. "No need for a laptop!"
- Verify current values of all variables live
- Quickly identify sequential logic faults
- Helps optimize Programming & Processes
- View logic in English or Japanese

### POWERFUL LOGIC PROGRAMMING

With GP-Pro EX, you can develop logic programs as well as screen creation. You can also import existing logic programs created with the GP-PRO/PBIII C-Package.



#### Time Saving Steps

##### Drag and Drop

Drag contact or coil to quickly create a graphical switch or lamp.

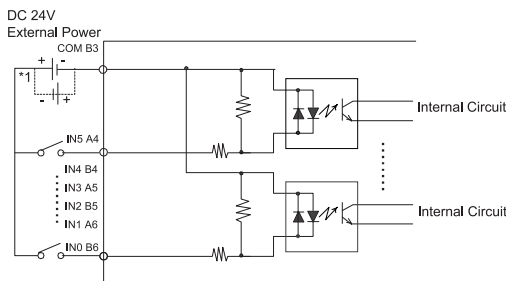
##### Re-usable sub-routines

Reduce steps for product programming development and maintenance using sub-routines.



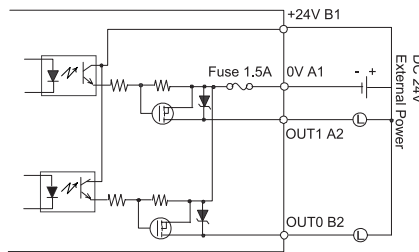
### BUILT-IN DISCRETE I/O

#### 6 Discrete Inputs, 2 Discrete Outputs Per Model

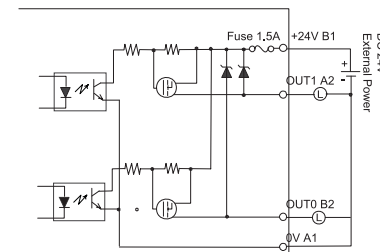


\*1 Dotted line shows connection to sink output type.

Discrete Input Connection



Discrete Output Connection (Sink Configuration)



Discrete Output Connection (Source Configuration)

# AGP3300T D81K/D81C SPECIFICATIONS

## FUNCTIONAL SPECIFICATIONS

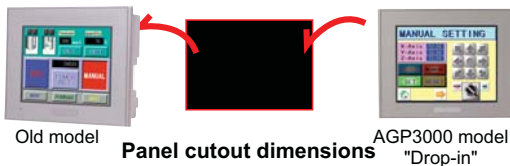
Model		AGP3300-T1-D24-D81K/D81C
Display	Type	TFT Color LCD
	Colors	65536 colors (no blink) / 16384 colors (3-speed blink)
	Backlight	CCFL Service life: 50,000 hrs. or more at 25°C (77°F) and 24 hrs. operation
	Resolution	320 x 240 pixels
	Brightness Control	8 levels of adjustment available via touch panel
Memory	Application	6 MB FEPRAM
	Data Backup	320KB SRAM
Interfaces	Serial (COM 1) Interface	RS-232C/422/485 configurable, 9 pin plug D-sub, Data Transmission Speed: 2400 to 115.2 Kbps
	Serial (COM 2) Interface	RS-422/485, 9 pin socket D-sub, Data Transmission Speed: 2400 to 115.2 Kbps (MPI Direct 187.5 Kbps)
	Ethernet Interface	Ethernet IEEE802.3, 10BASE-T/100BASE-TX, modular jack connector (RJ-45)
	Communication Module Interface	Interface port for optional communication modules.
	USB Interface	1 port USB1.1 Host I/F, USB TYPE-A connector
	Discrete 6 In 2 Out Interface	Connect to an I/O device. 6 Input pts 24VDC, Rated: 5.7 mA. 2 Outputs 24V DC, Rated: 24VDC @ 200mA/pt.
	CF Card Interface	1 slot CompactFlash™, TYPE II

## GENERAL SPECIFICATIONS

Electrical	Rated Voltage	24VDC
	Rated Voltage Range	19.2V DC to 28.8V DC
	Power Consumption	26W or less
Environmental	Ambient Operating Temp.	0°C (32°F) to 50°C (122°F)
	Storage Temperature	-20°C (-4°F) to 60°C (140°F)
	Storage Humidity	10%RH to 90%RH (non-condensing, wet bulb temperature: 39°C (102°F) or less)
	Altitude Operation	800hPa to 1114hPa (2000 meters or lower)
	Vibration & Shock Resistance	IEC61131-2 compliant. 5Hz to 9Hz single amplitude 3.5mm, 9Hz to 150Hz fixed acceleration 9.8m/s <sup>2</sup> , X,Y, Z directions for 10 times (80min.)
Structural	Ratings	Equivalent to IP65f, Nema #250 Type 4x/13 (Equivalent to NEMA 12 with the addition of "Oil or Coolant Spraying and Splashing")
	Certifications	CE, CSA, UL Listed CI 1 Div 2
	External Dimensions	W167.4mm[6.59in.] x H135mm [5.31in.] x D59.5mm [2.34in.]
	Weight	1.0kg (2.2lb) or less

## CUT-OUT COMPATIBILITY

### 16 Years of Cut-Out Compatibility



Panel cutout dimensions



Series	Size (mm)	156x123.5 mm
GP77R Series	GP377R Series	
GP2000 Series	GP2300/ GP2301 Series	
GP3000 Series	GP-3300 Series	

## SOFTWARE COMPATIBILITY



POWERED BY:

Screen Editor  
**GP-Pro EX**

HMI Development  
Software (V.1.10 or higher)

## ORDERING INFORMATION

ORDER NUMBER	DESCRIPTION
AGP3300-T1-D24-D81K	5.7" TFT, 2 Serial, 1 USB, Ethernet, Discrete 6 in 2 Out (Sink), 24V
AGP3300-T1-D24-D81C	5.7" TFT, 2 Serial, 1 USB, Ethernet, Discrete 6 in 2 Out (Source), 24V

### OPTIONAL ACCESSORIES

HMI-CAB-ETH	Ethernet Crossover Cable: HMI to PLC Ethernet port or to program HMI
CA3-USBCB-01	USB download cable, PC USB port to AGP USB port
CA3-DFS6-01	Overlay Screen protection sheets (5 sheets/pack)
PLC Cables & Accessories	See AGP3000 Connectivity Document

**Xycom Automation**  
Ph: 734-429-4971  
Fax: 734-429-1010  
<http://www.xycom.com>

**Customer Support Hotline:**  
**734-944-0482**



© 2006 Xycom Automation, LLC. Specifications may change without notice.  
Xycom Automation is a trademark of Xycom Automation. Other brand or product names are the property of their respective owners.



# California Proposition 65 Warning—Lead and Lead Compounds

## Advertencia de la Proposición 65 de California—Plomo y compuestos de plomo

### Avertissement concernant la Proposition 65 de Californie—Plomb et composés de plomb

**⚠ WARNING:** This product can expose you to chemicals including lead and lead compounds, which are known to the State of California to cause cancer and birth defects or other reproductive harm. For more information go to: [www.P65Warnings.ca.gov](http://www.P65Warnings.ca.gov).

**⚠ ADVERTENCIA:** Este producto puede exponerle a químicos incluyendo plomo y compuestos de plomo, que es (son) conocido(s) por el Estado de California como causante(s) de cáncer y defectos de nacimiento u otros daños reproductivos. Para mayor información, visite : [www.P65Warnings.ca.gov](http://www.P65Warnings.ca.gov).

**⚠ AVERTISSEMENT:** Ce produit peut vous exposer à des agents chimiques, y compris plomb et composés de plomb, identifiés par l'État de Californie comme pouvant causer le cancer et des malformations congénitales ou autres troubles de l'appareil reproducteur. Pour de plus amples informations, prière de consulter: [www.P65Warnings.ca.gov](http://www.P65Warnings.ca.gov).

All trademarks are the property of Schneider Electric SE, its subsidiaries, and affiliated companies.

**Schneider Electric USA, Inc.**  
800 Federal Street  
Andover, MA 01810 USA  
888-778-2733  
[www.schneider-electric.us](http://www.schneider-electric.us)

Todas las marcas comerciales son propiedad de Schneider Electric SE, sus filiales y compañías afiliadas.

Importado en México por:  
**Schneider Electric México, S.A. de C.V.**  
Av. Ejercito Nacional No. 904  
Col. Palmas, Polanco 11560 México, D.F.  
55-5804-5000  
[www.schneider-electric.com.mx](http://www.schneider-electric.com.mx)

Toutes les marques commerciales sont la propriété de Schneider Electric SE, ses filiales et compagnies affiliées.

**Schneider Electric Canada, Inc.**  
5985 McLaughlin Road  
Mississauga, ON L5R 1B8 Canada  
800-565-6699  
[www.schneider-electric.ca](http://www.schneider-electric.ca)