

AGP3400S D81K/D81C Integrated HMI Controller



Features:

- All-in-One HMI and PLC with Built-in 6 discrete inputs and 2 discrete outputs
- 4096 Colors, Clear, Bright, High-Resolution STN Display
- 64-bit RISC 266Mhz CPU for Ultra-Fast Screen Refresh and Data Sampling
- No Grid Analog Touch Panel for Improved Visibility and Precise Part Placement
- Supports Up to Four Protocol Drivers Simultaneously
- High Speed Application Transfer, 10 Times Faster than Conventional Operator Interfaces
- 10/100 Base-T Ethernet, USB, (MPI) Serial and CompactFlash™ Communication Interfaces
- High-Definition Part Images and Multi-Language Support

Specifications

Model	AGP3400-S1-D24-D81K	AGP3400-S1-D24-D81C
Graphics Display Resolution	640 x 480 pixels	
Display Type and Size	STN Color LCD (7.5 inch)	
Display Colors	4096colors (no blink)/(3-speed blink)	
Display Area	153.7mm[6.05in.] x 115.8mm[4.56in.]	
Touch Screen	Resistive film analog 1024 x 1024 resolution	
USB	1 port USB1.1 Host I/F, USB TYPE-A connector	
CF Card	1 slot CompactFlash™, TYPE II	
Serial	COM 1: RS-232C/422/485 configurable, 9 pin plug D-sub, Data Transmission Speed: 2400 to 115.2 kbps COM 2: RS-422/485, 9 pin socket D-sub, Data Transmission Speed: 2400 to 115.2 kbps (MPI Direct 187.5 kbps)	
Ethernet	Ethernet IEEE802.3, 10BASE-T/100BASE-TX, modular jack connector (RJ-45)	
Discrete 6 In 2 Out Interface	Connect to an I/O device. 6 Input pts 24VDC, Rated:5.7 mA. 2 Outputs 24V DC, Rated:24VDC @ 200mA/pt.	
Backlight	CCFL (Service life: 54,000 hrs. at 25 °C and 24 hr. Operation)	
Brightness and Contrast Controls	8 levels of adjustment available via touch panel	
Programming Memory	8MB FEPRAM (< Rev 4), 16MB (Rev 4 and up, using GP-Pro EX V2.6 or later)	
Data Backup	320kb SRAM with battery backup	
AUX Input/Output	AUX Discrete Output: Alarm Output, RUN Output, Buzzer Output, Rated: DC24V @ 50mA AUX Discrete Input: Remote Reset Input, Rated: DC24V @ 6mA Operating Voltage: ON State: DC9V or greater, OFF State: DC2.5V or less	
Sound Output Interface	Speaker Output 70mW(Rated Load: 8Ω, Frequency: 1KHz), Connector: Two piece type terminal block	

General Specifications

Input Voltage	DC24V (Rated voltage DC19.2 to 28.8V)
Power Consumption	28W or less
Ambient Operating Temp.	0°C (32°F) to 50°C (122°F)
Storage Temperature	-20°C (-4°F) to 60°C (140°F)
Altitude Endurance	800hPa to 1114hPa (2000 meters or lower)
Certifications	CE, CSA, UL Listed Cl 1 Div 2 Groups A, B, C, D
Humidity - Ambient/Storage	10%RH to 90%RH (non-condensing, wet bulb temperature: 39°C (102°F) or less)
Corrosive Gas	Free of corrosive gasses
Noise Immunity	Noise Voltage: 1000Vp-p Pulse Duration: 1μs Arise Time : 1ns
Cooling Method	Natural air circulation
Electrostatic Discharge Immunity	6kV (complies with EN 61000-4-2 Level 3)
Vibration Resistance	IEC61131-2 compliant. 5Hz to 9Hz single amplitude 3.5mm, 9Hz to 150Hz fixed acceleration 9.8m/s ² , X,Y, Z directions for 10 times (100min.)
Shock during operation	EN/IEC 60068-2-2 compliant, 147m/Sec, 11msec (Approx. 15G), 3 shocks to 3 direction/ axis
Rating	Equivalent to IP65f, Nema #250 Type 4x/13 (Equivalent to NEMA 12 with the addition of "Oil or Coolant Spraying and Splashing")
Weight	2.0kg [4.4lb] or less
External Dimensions	W215mm[8.46in.] x H170mm[6.69in.] x D60mm[2.36in.]
Warranty	Two-year standard (maximum 4 years)

Online Logic Programming Monitoring Feature

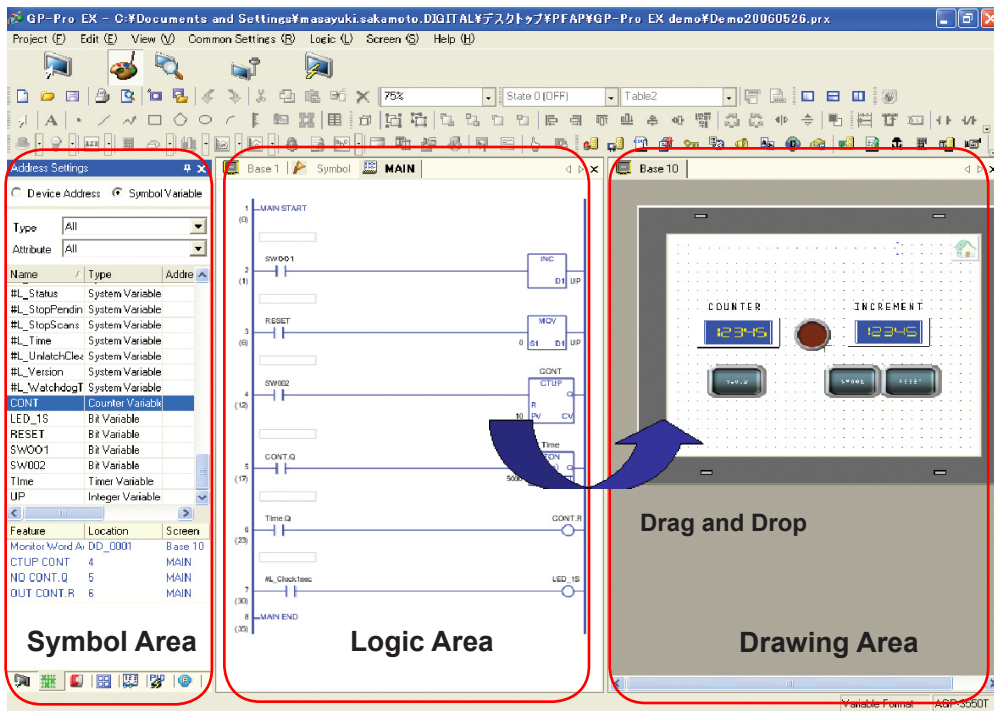


Detect Problems Faster

- View logic Programming on HMI while running.
"No need for a laptop!"
- Verify current values of all variables live
- Quickly identify sequential logic faults
- Helps optimize Programming & Processes
- View logic in English or Japanese

Powerful Logic Programming

With GP-Pro EX, you can develop logic programs as well as screen creation. You can also import existing logic programs created with the GP-PRO/PBIII C-Package.



Time Saving Steps

Drag and Drop

Drag contact or coil to quickly create a graphical switch or lamp.

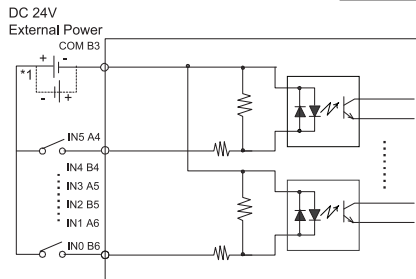
Re-usable sub-routines

Reduce steps for product programming development and maintenance using sub-routines.



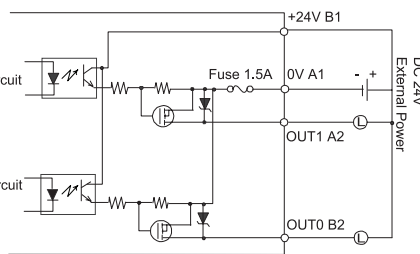
Buil-In Discrete I/O

6 Discrete Inputs, 2 Discrete Outputs Per Model

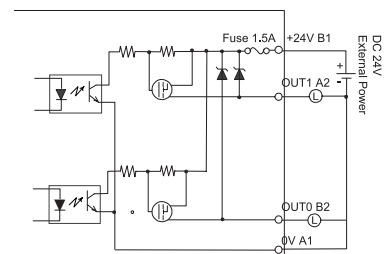


*1 Dotted line shows connection to sink output type.

Discrete Input Connection

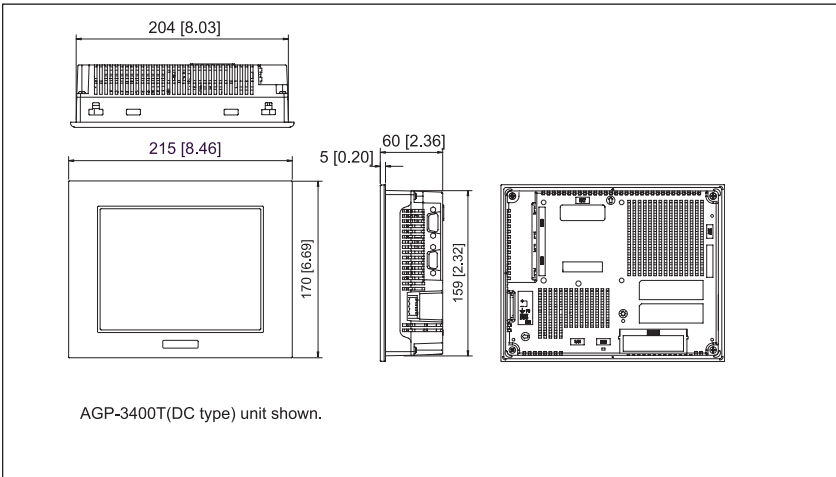


Discrete Output Connection (Sink Configuration)



Discrete Output Connection (Source Configuration)

AGP3400S - External Dimensions



Ordering Information

Part Number	Description
AGP3400-S1-D24-D81K	7.5" STN, 2 Serial, 1 USB, Ethernet, Discrete 6 In 2 Out sink), 24VDC
AGP3400-S1-D24-D81C	7.5" STN, 2 Serial, 1 USB, Ethernet, Discrete 6 In 2 Out (Source), 24VDC

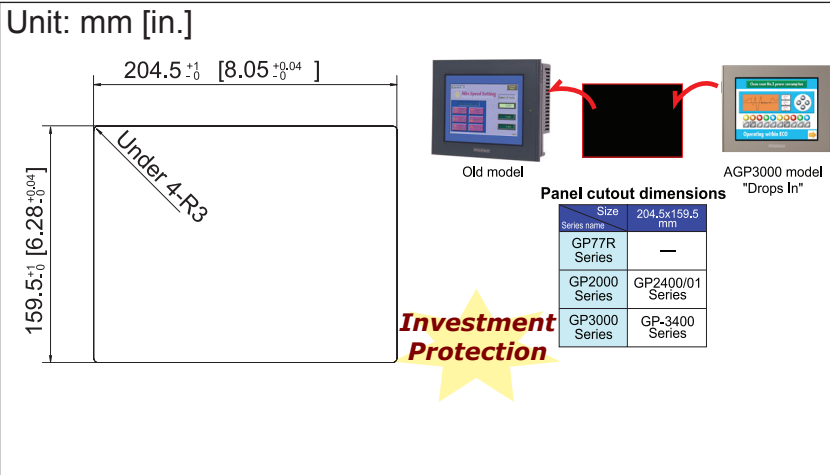
Optional Items

Part Number	Product Name
HMI-CAB-ETH	Ethernet Crossover Cable: HMI to PLC Ethernet port or to program HMI
CA3-USBCB-01	USB download cable, PC USB port to AGP USB port
PS400-DF00	Screen Protection Sheet (5 sheets/set)
PLC Cables & Accessories	See AGP3000 Connectivity Document

Caution: Before operating any of these products, please be sure to read all related manuals thoroughly.

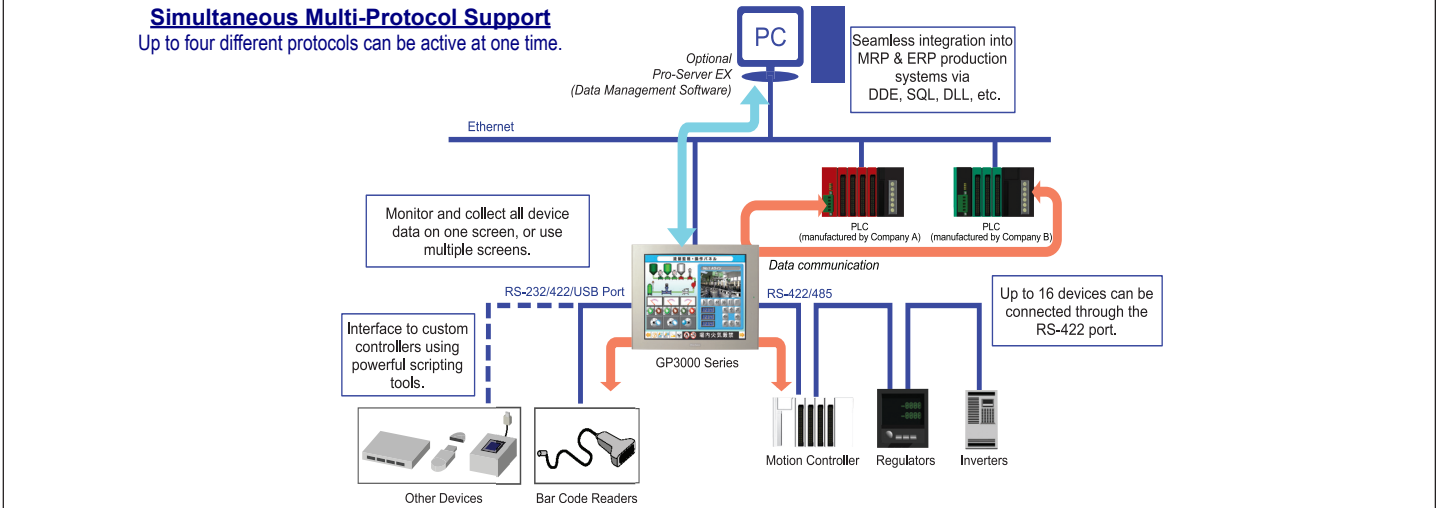
- All product names used in this document are trademarks or registered trademarks of their respective companies.
- All information contained in this document is subject to change without notice.

AGP3400S - Cut-Out Dimensions and Compatibility



Simultaneous Multi-Protocol Support

Up to four different protocols can be active at one time.



Pro-face America
 Phone: 734.429.4971
 Fax: 734.429.1010
 www.profaceamerica.com
 DS-AGP3400S_D10(C)

Customer Service Hotline: 734.944.0482

For more information
ACCESS www.profaceamerica.com

Pro-face
 Human Machine Interface



California Proposition 65 Warning—Lead and Lead Compounds

Advertencia de la Proposición 65 de California—Plomo y compuestos de plomo

Avertissement concernant la Proposition 65 de Californie—Plomb et composés de plomb

⚠ WARNING: This product can expose you to chemicals including lead and lead compounds, which are known to the State of California to cause cancer and birth defects or other reproductive harm. For more information go to: www.P65Warnings.ca.gov.

⚠ ADVERTENCIA: Este producto puede exponerle a químicos incluyendo plomo y compuestos de plomo, que es (son) conocido(s) por el Estado de California como causante(s) de cáncer y defectos de nacimiento u otros daños reproductivos. Para mayor información, visite : www.P65Warnings.ca.gov.

⚠ AVERTISSEMENT: Ce produit peut vous exposer à des agents chimiques, y compris plomb et composés de plomb, identifiés par l'État de Californie comme pouvant causer le cancer et des malformations congénitales ou autres troubles de l'appareil reproducteur. Pour de plus amples informations, prière de consulter: www.P65Warnings.ca.gov.

All trademarks are the property of Schneider Electric SE, its subsidiaries, and affiliated companies.

Schneider Electric USA, Inc.
800 Federal Street
Andover, MA 01810 USA
888-778-2733
www.schneider-electric.us

Todas las marcas comerciales son propiedad de Schneider Electric SE, sus filiales y compañías afiliadas.

Importado en México por:
Schneider Electric México, S.A. de C.V.
Av. Ejercito Nacional No. 904
Col. Palmas, Polanco 11560 México, D.F.
55-5804-5000
www.schneider-electric.com.mx

Toutes les marques commerciales sont la propriété de Schneider Electric SE, ses filiales et compagnies affiliées.

Schneider Electric Canada, Inc.
5985 McLaughlin Road
Mississauga, ON L5R 1B8 Canada
800-565-6699
www.schneider-electric.ca