

PRO-FACE OPERATOR INTERFACES

PRODUCT DATASHEET



AGP3600-T1-AF-FN1M

AGP3600-T1-D24-FN1M

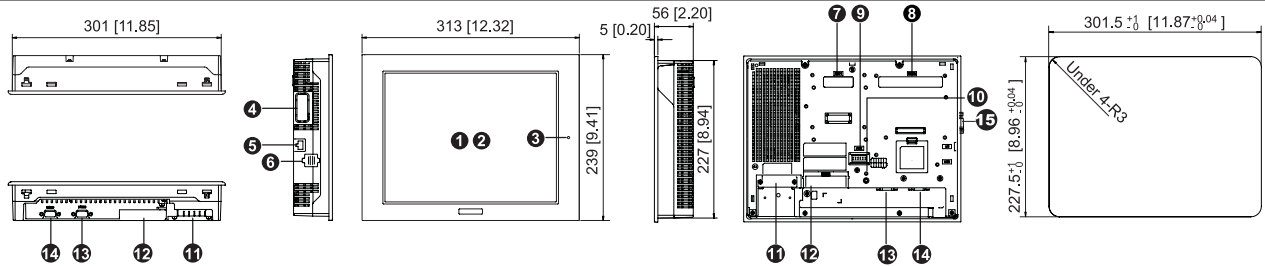


AGP3600T FN1M Integrated HMI Controller

12.1" Integrated Control Operator Interface with Dual Channel Flex Network Port

- Expand and control distributed I/O modules via Flex Network Interface
- 65,536 Color, Clear, Bright, High-Resolution LCD Display
- 64-bit RISC 266Mhz CPU for Ultra Fast Screen Refresh and Data Sampling
- No Grid Analog Touch Panel for Improved Visibility and Precise Part Placement
- Supports Up to Four Protocol Drivers Simultaneously
- High Speed Application Transfer, 10 Times Faster than Conventional Operator Interfaces
- 100 Base-T Ethernet, USB, Serial (MPI) and CompactFlash™ Communication Interfaces

PRODUCT OVERVIEW



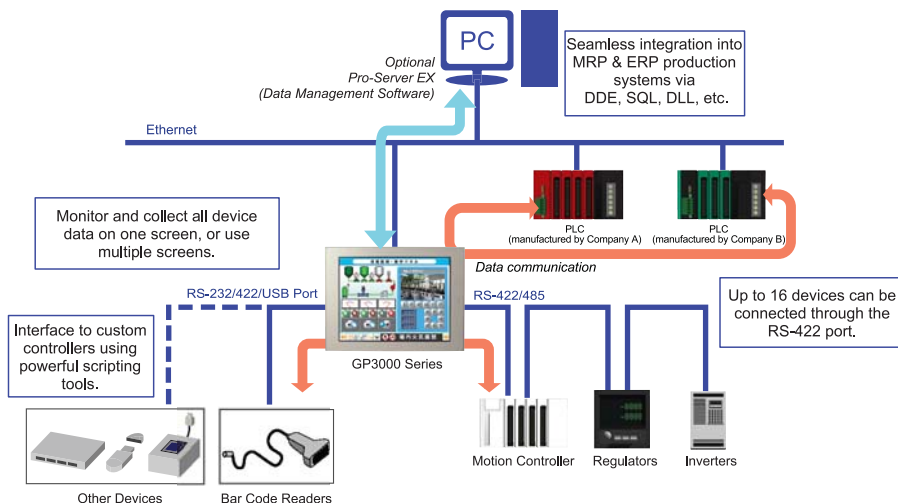
AGP-3600T(AC type) unit shown.

- 1 Display**
- 2 Touch Panel**
- 3 Status LED**
- 4 Expansion Communication Feature Interface 1**
- 5 10/100 Base-T Ethernet Feature (LAN) (RJ45)**
- 6 USB Interface (Host)**
Conforms to USB1.1. (TYPE-A conn.) 2 ports for data transfer cable, USB-compatible printer, or barcode reader, etc. The maximum communication distance is 5m.
- 7 Optional Communication Module Interface 2**
- 8 Optional Video Mix Module Interface**
Support for optional GP2000-VM41 4-Channel video camera input and RGB remote monitor output.
- 9 Auxiliary input/output /Audio Output Interface (AUX)**
This interface is External Reset, Alarm Output, Buzzer Output, and sound output.
- 10 CompactFlash Card Access LED**
This lamp will light when CF card is inserted and CF card cover is closed, or while accessing the CF card when the cover is opened.
- 11 Power Input Terminal Block**
Connect the power cable.
- 12 CompactFlash Access Cover**
The CF Card I/F and Dip Switches are located behind the access door. This cover must be closed when reading and writing to the CF Card.
- 13 Serial Interface (COM1)**
RS-232C/RS-422 serial interface. D-sub 9-pin plug type connector. Communication method is switched via software.
- 14 Serial Interface (COM2)**
RS-422/RS-485 (MPI 187kbps) serial interface. D-sub 9-pin socket type connector.
- 15 FLEX NETWORK Interface**
2 ch. Flex Network interface for use with FN-xxx distributed I/O modules.

COMMUNICATION CAPABILITY

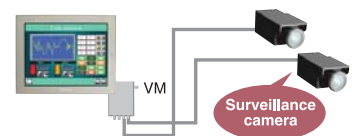
Simultaneous Multi-Protocol Support

Up to four different protocols can be active at one time.



Remote Video Monitoring

Add up to four additional cameras using optional GP2000-VM41 Video Mix Unit



Video images provide virtual on-site monitoring of line conditions.

Applications

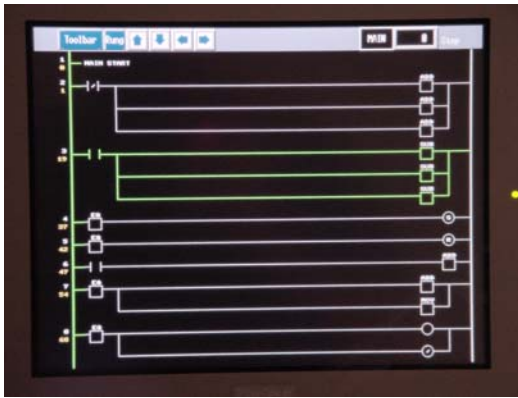
- Inline Process Monitoring
- Machine Safety
- Security



AGP3600T FN1M CONTINUED

INTEGRATED MONITOR CONTROL

ONLINE LOGIC PROGRAM MONITORING FEATURE

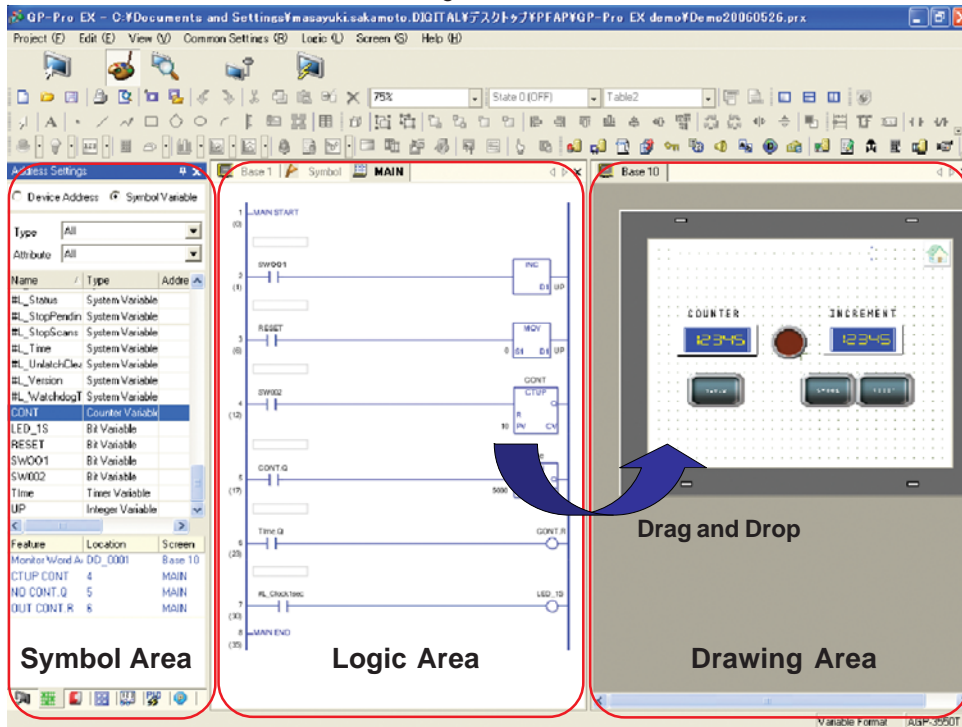


Detect Problems Faster

- View logic Programming on HMI while running. "No need for a laptop!"
- Verify current values of all variables live
- Quickly identify sequential logic faults
- Helps optimize Programming & Processes
- View logic in English or Japanese

POWERFUL LOGIC PROGRAMMING

With GP-Pro EX, you can develop logic programs as well as screen creation. You can also import existing logic programs created with the GP-PRO/PBIII C-Package.



Time Saving Steps

Drag and Drop
 Drag contact or coil to quickly create a graphical switch or lamp.

Re-usable sub-routines
 Reduce steps for product programming development and maintenance using sub-routines.

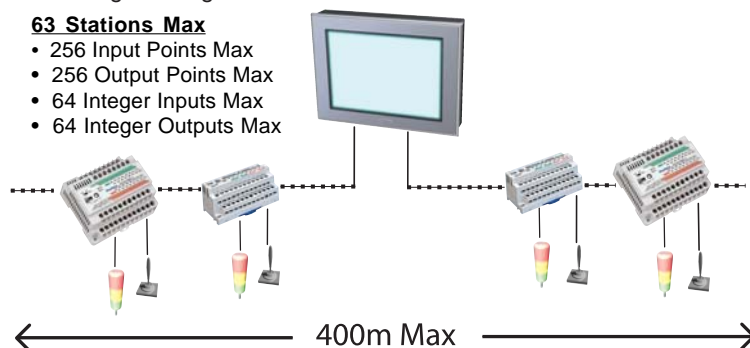


DISTRIBUTED I/O MODULES

Features include: timers, counters, logical operations, mathematical, bit operation, etc. Mix and match any combination of analog and digital I/O modules.

63 Stations Max

- 256 Input Points Max
- 256 Output Points Max
- 64 Integer Inputs Max
- 64 Integer Outputs Max



FLEX NETWORK MODULES

Monitor & Control

- For distributed I/O applications.
- Supports the Flex Network Analog and Discrete I/O Modules.



AGP3600T FN1M SPECIFICATIONS

FUNCTIONAL SPECIFICATIONS

| Model | AGP3600-T1-AF-FN1M | | AGP3600-T1-D24-FN1M |
|------------------|--|--|---------------------|
| Display | Type | TFT Color LCD | |
| | Colors | 65536 colors (no blink) / 16384 colors (3-speed blink) | |
| | Backlight | User replaceable CCFL (Service life: 50,000 hrs. or more at 25°C (77°F) and 24 hrs. operation) | |
| | Resolution | 800 x 600 pixels | |
| | Brightness Control | 8 levels of adjustment available via touch panel | |
| Memory | Touch Panel | Resistive film analog 1024 x 1024 resolution | |
| | Application | 8MB FEPRAM | |
| Interfaces | Data Backup | 320KB SRAM | |
| | Serial (COM 1) Interface | RS-232C/422/485 configurable, 9 pin D-sub plug, Data Transmission Speed: 2400 to 115.2 kbps | |
| | Serial (COM 2) Interface | RS-422/485, 9 pin D-sub socket, Data Transmission Speed: 2400 to 115.2 kbps | |
| | Ethernet Interface | Ethernet IEEE802.3, 10BASE-T/100BASE-TX, modular jack connector (RJ-45) | |
| | Communication Module Interface | Interface port for future field networking solutions | |
| | USB Interface | 2 ports USB1.1, Host I/F, USB TYPE-A connector | |
| | CF Card Interface | 1 slot CompactFlash™, TYPE II | |
| | Sound Output | Speaker output 70mW (Rated Load: 8ohm, Frequency: 1kHz) | |
| | Video Mix Interface | Support for optional GP2000-VM41 4-Channel Video camera input and RGB remote monitor with output. (Verify that your version of GP-Pro EX supports this feature.) | |
| | Flex Network Interface | Connect to Flex Network distributed I/O modules: 2 channel, 200m per channel. Speed: 6Mbps, 12Mbps. Bit variable Input/Output: 512pts max. Integer Variable Input/Output: 128 pts max. | |
| AUX Input/Output | AUX Discrete Output: Alarm Output, RUN Output, Buzzer Output, Rated: DC24V @ 50mA AUX Discrete Input: Remote Reset Input, Rated: DC24V @ 6mA Operating Voltage: ON State: DC9V or greater, OFF State: DC2.5V or less | | |

GENERAL SPECIFICATIONS

| | | | |
|---------------|------------------------------|---|-------------------------------|
| Electrical | Rated Voltage | 100V AC to 240V AC | 24V DC |
| | Rated Voltage Range | 85V AC to 265V AC | 19.2V DC to 28.8V DC |
| | Power Consumption | 100V AC 0.9A or less, 240V AC 0.45A or less | 50W or less |
| | Ambient Operating Temp. | 0°C (32°F) to 50°C (122°F) | |
| Environmental | Storage Temperature | -20°C (-4°F) to 60°C (140°F) | |
| | Humidity | 10%RH to 90%RH (non-condensing, wet bulb temperature: 39°C (102°F) or less) | |
| | Altitude Operation | 800hPa to 1114hPa (2000 meters or lower) | |
| | Vibration & Shock Resistance | IEC61131-2 compliant. 5Hz to 9Hz single amplitude 3.5mm, 9Hz to 150Hz fixed acceleration 9.8m/s ² , X,Y, Z directions for 10 times (100min.) | |
| Structural | Ratings | Equivalent to IP65f, Nema #250 Type 4x/13 (Equivalent to NEMA 12 with the addition of "Oil or Coolant Spraying and Splashing") | |
| | Certifications | CE, UL, cUL Recognized | CE, CSA, UL Listed CI 1 Div 2 |
| | External Dimensions | W313mm [12.31in.] x H239mm [9.41in.] x D56mm [2.20in.] | |
| | Weight | 3.0kg (6.6lb) or less | |

CUTOUT COMPATIBILITY

16 Years of Cut-Out Compatibility

Investment Protection

Old model Panel cutout dimensions AGP3000 model

| Series Name | Size (mm) |
|---------------|---|
| GP77R Series | 301.5x227.5 |
| GP2000 Series | GP250001 GP250001 Series |
| GP3000 Series | GP-3600 GP-3500 Series (STN or Mono) |

Drop-in replacement for: GP2600, GP2500, and GP577R units.

SOFTWARE COMPATIBILITY



POWERED BY:

Screen Editor

GP-Pro EX

HMI Development

Software (V.1.10 or higher)

ORDERING INFORMATION

ORDER NUMBER

AGP3600-T1-AF-FN1M

AGP3600-T1-D24-FN1M

OPTIONAL ACCESSORIES

HMI-CAB-ETH

CA3-USBCB-01

CA3-DFS12-01

GP2000-VM41

PLC Cables

DESCRIPTION

12.1" TFT, USB, Ethernet, Serial HMI, Flex Network, 100-240AC

12.1" TFT, USB, Ethernet, Serial HMI, Flex Network, 24VDC

Ethernet Crossover Cable: HMI to PLC Ethernet port or to program HMI

USB download cable, PC USB port to AGP USB port

Overlay Screen Protection Sheets (5 sheets/pack)

Four-Channel Video Mix Unit (Verify support in your version of GP-Pro EX)

See AGP3000 Connectivity Document

Xycom Automation

Ph: 734-429-4971

Fax: 734-429-1010

<http://www.xycom.com>

Customer Support Hotline:

734-944-0482

Pro-face®
XYCOM™

© 2006 Xycom Automation, LLC. Specifications may change without notice.

Xycom Automation is a trademark of Xycom Automation. Other brand or product names are the property of their respective owners.



California Proposition 65 Warning—Lead and Lead Compounds

Advertencia de la Proposición 65 de California—Plomo y compuestos de plomo

Avertissement concernant la Proposition 65 de Californie—Plomb et composés de plomb

⚠ WARNING: This product can expose you to chemicals including lead and lead compounds, which are known to the State of California to cause cancer and birth defects or other reproductive harm. For more information go to: www.P65Warnings.ca.gov.

⚠ ADVERTENCIA: Este producto puede exponerle a químicos incluyendo plomo y compuestos de plomo, que es (son) conocido(s) por el Estado de California como causante(s) de cáncer y defectos de nacimiento u otros daños reproductivos. Para mayor información, visite : www.P65Warnings.ca.gov.

⚠ AVERTISSEMENT: Ce produit peut vous exposer à des agents chimiques, y compris plomb et composés de plomb, identifiés par l'État de Californie comme pouvant causer le cancer et des malformations congénitales ou autres troubles de l'appareil reproducteur. Pour de plus amples informations, prière de consulter: www.P65Warnings.ca.gov.

All trademarks are the property of Schneider Electric SE, its subsidiaries, and affiliated companies.

Schneider Electric USA, Inc.
800 Federal Street
Andover, MA 01810 USA
888-778-2733
www.schneider-electric.us

Todas las marcas comerciales son propiedad de Schneider Electric SE, sus filiales y compañías afiliadas.

Importado en México por:
Schneider Electric México, S.A. de C.V.
Av. Ejercito Nacional No. 904
Col. Palmas, Polanco 11560 México, D.F.
55-5804-5000
www.schneider-electric.com.mx

Toutes les marques commerciales sont la propriété de Schneider Electric SE, ses filiales et compagnies affiliées.

Schneider Electric Canada, Inc.
5985 McLaughlin Road
Mississauga, ON L5R 1B8 Canada
800-565-6699
www.schneider-electric.ca