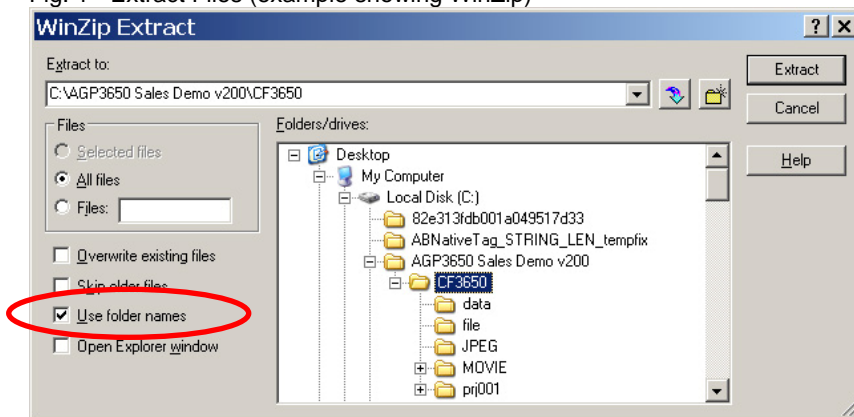


CF Card download instructions for AGP3x50 Sales Demo v2.00

## Step 1: Making a “bootable” CF Card

- 1) Use your web browser to connect to the Pro-face Partners Login and download the latest version of the AGP3\*50 Sales Demo v200.zip and AGP3\*50 Sales Demo Manual.pdf using the “Pro-face Demo Applications”, “AGP Sales Demo” links.
- 2) After the download completes extract the files and folders from the zip file to a location on your PC hard drive. When unzipping the files make sure you use the “Use Folder Names” (see Fig. 1) or similar function depending on your archive software.

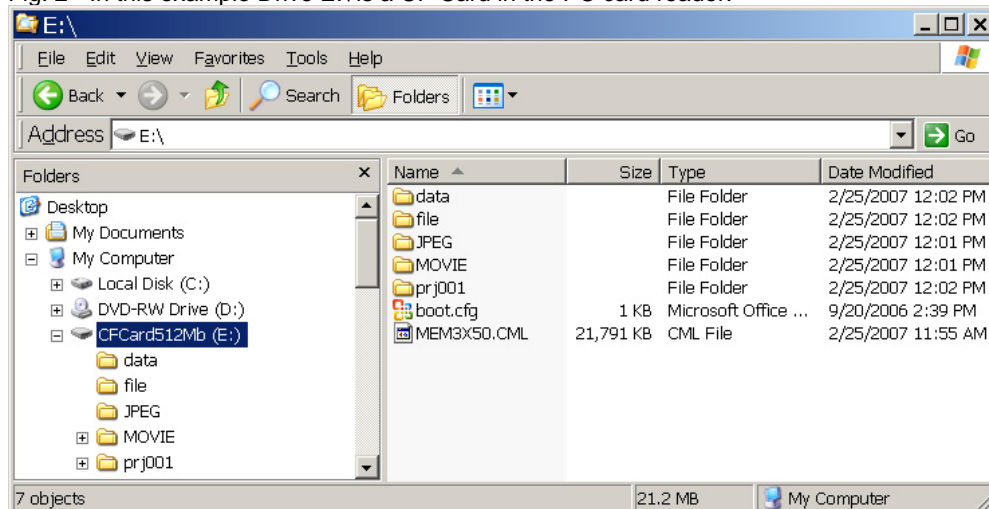
Fig. 1 - Extract Files (example showing WinZip)



After extracting the files you should see the folder structure as shown in Fig. 1

- 3) Insert a CF Card (at least 128Mb) in your PC card reader and make sure no old data exists.
- 4) In Windows Explorer copy all files and folders in the \CF3650 or \CF3750 folder to the root directory of the CF Card. Do not copy the CF3650 or CF3750 folder itself, copy only its contents. (see Fig. 2)

Fig. 2 - In this example Drive E:\ is a CF Card in the PC card reader.



## Downloading the Sales Demo project using a CF Card

Use your web browser to connect to the Sales FTP Site and download the latest version of the  
There are 2 ways to start downloading the project to an AGP using the CF Card created in Step 1.

- 1) Using the AGP Offline Menu, see Step 2.1
- 2) Using the AGP DIP Switches, See Step 2.2

### Step 2.1: Start downloading using the Offline Menu

- 1) Power down the AGP
- 2) Insert the CF Card created in Step 1 and close the CF Card door.
- 3) Power up the AGP
- 4) Use the 2-point touch to display the System Menu, depending on the OS and Runtime version of the AGP the System Menu may look like Fig. 3 or Fig. 4

Fig. 3



Fig. 4



- 5) If the system menu looks like Fig. 4 you will first have to touch the “CF/USB” button. This will bring up the menu as shown in Fig. 5. If the menu looks like Fig. 3 continue to 6.

Fig. 5

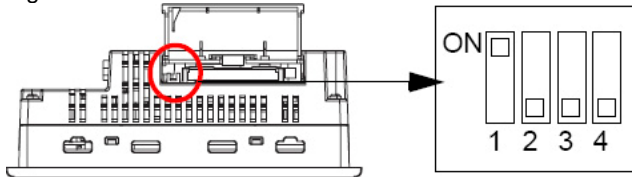


- 6) Continue by touching the “CF Starting” button to reboot the AGP into CF Start mode.
- 7) Go to Step 3 to download the project to the AGP

## Step 2.2: Start downloading using AGP DIP Switch 1

- 1) Power down the AGP
- 2) Locate the 4 DIP Switches located next to the CF Card slot in the AGP.  
Set DIP Switch 1 (the first switch) to the ON position (Fig. 6)

Fig. 6

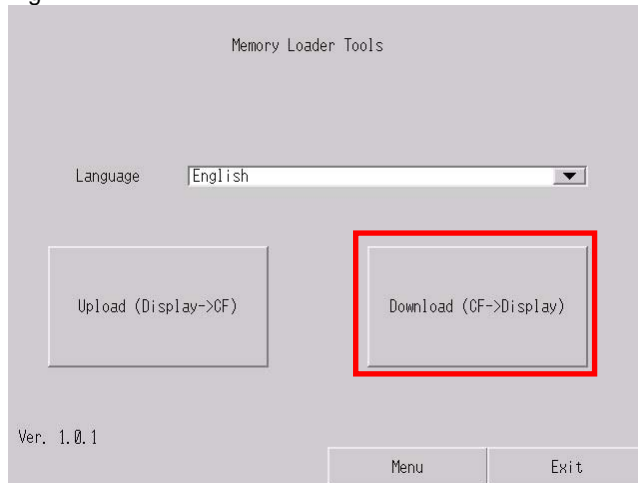


- 3) Insert the CF Card created in Step 1 and close the CF Card door.
- 4) Power up the AGP
- 5) Go to Step 3 to download the project to the AGP

## Step 3: Downloading the project files

- 1) After the AGP powers up the “Memory Loader Tools” menu will appear. (see Fig. 7)  
If the menu appears in Japanese use the Language drop down list to select English.

Fig. 7

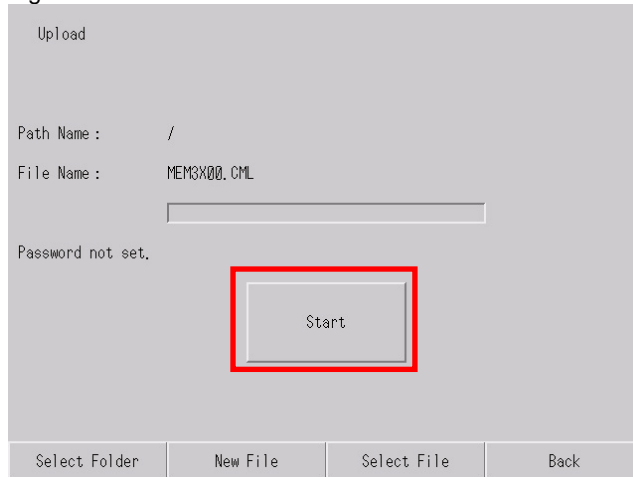


- 2) Touch the “Download (CF->Display)” button to continue. (see Fig. 7)
- 3) If a transfer password has previously been set for the AGP you will have to enter it now.

## Step 3: Downloading the project files (continued)

- 4) Touch the “Start” button to download the project to the AGP (Fig. 8)

Fig. 8



- 5) Follow the on screen instructions to complete the download process.
- 6) If you used the DIP Switch option in Step 2.2:
  - a. After the download completes power down the AGP
  - b. Set Dip Switch 1 to OFF