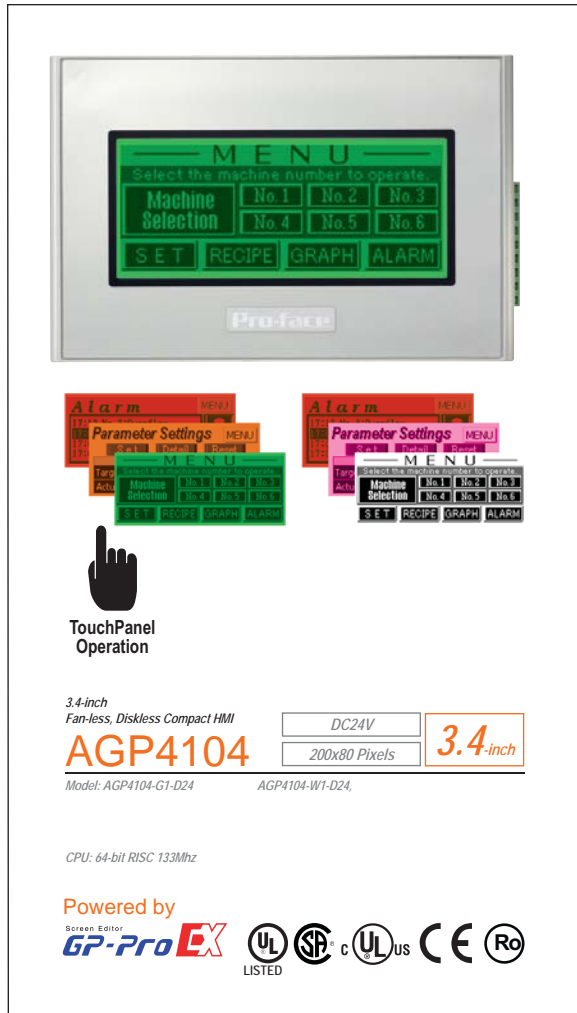


3.4" Compact HMI with TouchPanel - AGP4104



Features:

- Crisp, clear and bright, 200 x 80 resolution Monochrome LCD Display
- No Grid Analog Touch Panel for improved visibility and precise part placement
- Touch Panel operation with in a text panel replacement form factor
- Energy efficient, maintenance free LED backlight
- G1 models have a Green display supporting event based change to Orange/Red to alert operators
- W1 models have a White display supporting event based change to Pink/Red to alert operators
- 2 USB ports, plus one Ethernet Interface for device communication
- Programs with the free Limited Edition of GP-Pro EX

Performance Specifications		AGP4104-G1-D24	AGP4104-W1-D24
Display	Type	3.4" Monochrome LCD	
	Colors	Green / Orange / Red (16 shades)	White / Pink / Red (16 shades)
	Backlight	LED (service life: Green/White 50,000 hrs., Red 10,000 hrs. at 25°C and 24hr. operation)	
	Resolution	200 x 80 pixels	
	Brightness Adjustment	16 levels of adjustment available via touch panel	
	Contrast Adjustment	8 levels of adjustment available via touch pane	
Memory	Application	2.2MB Flash EPROM	
	Data Backup	No Internal backup SRAM	
Interfaces	Ethernet Interface	1x IEEE802.3u Ethernet port 10BASE-T / 100BASE-TX Modular jack RJ-45	
	Serial Interface	None. Serial Devices can be addressed through a second, Master, AGP3000 using the High Speed Multilink Feature (See GP-Pro EX development software documentation for details)	
	USB Interface	1x USB 2.0 (Host) Type A (for PC or USB Memory project transfer and Barcode Input) 1x USB 2.0 (Host) Type mini-B (for project transfer)	

General Specifications		AGP4104-G1-D24, AGP4104-W1-D24
Electrical	Input Voltage	24V DC
	Rated Voltage	19.2V DC to 28.8V DC
	Power Consumption (without USB devices)	2.7W or less
	Power Consumption (powering USB devices)	6.0W or less
Environmental	Ambient Operating Temp.	0°C (32°F) to 50°C (122°F)
	Storage Temperature	-20°C (-4°F) to 60°C (140°F)
	Humidity	10%RH to 90%RH (non-condensing, wet bulb temperature: 39°C (102°F) or less)
	Altitude Operation	800hPa to 1114hPa (2000 meters above sea level or lower)
	Vibration & Shock Resistance	IEC/EN61131-2 compliant 5 to 9 Hz single-amplitude 3.5 mm [0.14 in.] 9 to 150 Hz constant-accelerated velocity 9.8 m/s² X,Y, Z directions for 10 cycle (100 minute)
Structural	Ratings	Equivalent to IP65f, Nema #250 Type 4X/13
	Certifications	UL/c-UL Listed, CSA (UL508, CSA-C22.2 No.142-M1987), CE EN61000-6-2, EN61000-6-4, EN61131-2, RoHS
	External Dimensions	W 116.5mm [4.59in] X H 77.5mm [3.05in] X D 28mm [1.1in]
	Weight	0.2kg [0.4lb]
	Warranty	Two year standard

Communication Capability

Ethernet Drivers (Direct Connection)		Serial connections through Ethernet (Requires 2nd AGP3000)	
Rockwell Automation	EtherNet/IP (Native Tag)	Rockwell Automation	DF1
Siemens AG	SIMATIC S7 Ethernet		DH485
Schneider Electric	Modbus TCP Master	Siemens AG	SIMATIC S7 MPI Direct
	Modbus TCP Slave	GE	Series 90-30/70 SNP & SNP-X
Modbus-IDA	General Modbus TCP Master	Modbus-IDA	General Modbus SIO Master
ODVA	EtherNet/IP Explicit Messaging	Schneider Electric	Modbus SIO Master (RTU)
Omron Corporation	CS/CJ Series Ethernet		Modbus SIO Slave
	CS/CJ Series EtherNet/IP	Omron Corporation	CS/CJ Series HOST Link
Yaskawa Electric	MP Series Ethernet	Mitsubishi Electric	A, FX, Q, QnA, QUTE Series CPU Direct
Koyo Electronics / Automation Direct	Kostac / DL Series Modbus TCP	IAI Corporation	ROBO CYLINDER Modbus SIO
Mitsubishi Electric	Q/QnA Series Ethernet		X-SEL Controller
	FX Series Ethernet	The list above is a small selection of the many drivers that are supported by the AGP4104 HMI. In addition to these drivers the AGP4104 Series HMI support USB code readers and USB Storage Devices for Project Transfer without PC.	
	Q Series QnU CPU Ethernet		
Digital Electronics	Memory Link Ethernet	Pro-face continuously adds and updates drivers and makes these available free of charge on the Otasuke-Pro! Technical Support website.	
	General Ethernet		
Keyence	KV-700/1000/3000/5000 Ethernet	For a full list of supported drivers, new drivers and updates visit: https://www.hmisource.com/otasuke/download/update	
Hitachi	S10V Series Ethernet		
	H Series Ethernet		

Ordering Information (4100 Series)

Part Number	Description
AGP4104-G1-D24	3.4" Mono (Green/Orange/Red), 1 Ethernet Port, 2 USB, 24VDC
AGP4104-W1-D24	3.4" Mono (White/Pink/Red), 1 Ethernet Port, 2 USB, 24VDC
AGP4105-G1-D24	3.4" Mono (Green/Orange/Red), 1 Serial RS232C, 2 USB, 24VDC
AGP4105-W1-D24	3.4" Mono (White/Pink/Red), 1 Serial RS232C, 2 USB, 24VDC
AGP4106-G1-D24	3.4" Mono (Green/Orange/Red), 1 Serial RS422/485, 2 USB, 24VDC
AGP4106-W1-D24	3.4" Mono (White/Pink/Red), 1 Serial RS422/485, 2 USB, 24VDC
AGP4107-G1-D24	3.4" Mono (Green/Orange/Red), 1 Serial RS485(MPI), 2 USB, 24VDC
AGP4107-W1-D24	3.4" Mono (White/Pink/Red), 1 Serial RS485(MPI), 2 USB, 24VDC

Optional Items (4100 Series)

Part Number	Product Name
EX-ED-Vxx	Screen Editor Software (Limited Edition)
Note: Limited Edition of GP-Pro EX (V2.6 or later) can be used to program the AGP4100 Series. Please visit www.profaceamerica.com to download this fully functional Limited Edition (previously called "Trial version")	
ZC9USCBMB1	Transfer/Programming Cable USB: HMI type mini-B Port to PC USB type A Port
ZC9USEXMB1	USB type mini-B Front Panel Access Cable: 1M
CA5-USBEXT-01	USB type A Front Panel Access Cable: 1M
ZC9DS31	Touch Screen Protection Sheet (Qty 5)
ZC9USCL1	USB Cable clamp (Qty 5) type A USB port
ZC9USCLMB1	USB Cable clamp (Qty 5) type mini-B USB port
ZC9WG31	Replacement Gasket
ZC9AF31	Replacement Mounting Fasteners, 1 set of 2
ZC9CMC1	Replacement Serial Interface Connector for 4105/4106
CA6-USB232-01	Converts USB type A to 9 pin D-Sub RS-232C Serial Port
HMI-CAB-ETH	Ethernet Crossover cable, 6ft
ZC9CBQ31	RS232C Cable, 3M, 4105 to Mitsubishi PLC Q Series
ZC9CBFX11	RS422/485 Cable, 1M, 4106 to Mitsubishi PLC FX Series
ZC9CBFX51	RS422/485 Cable, 5M, 4106 to Mitsubishi PLC FX Series
ZC9CBA51	RS422/485 Cable, 5M, 4106 to Mitsubishi PLC A Series
ZC9CBFP21	RS232C Cable, 2M, 4105 to Panasonic FP Series PLC
Note: Serial cables for AGP4105/4106 and 4107 only, Ethernet cable for AGP4104 only Caution: Before operating any of these products, please be sure to read all related manuals thoroughly.	
<ul style="list-style-type: none"> - All product names used in this document are trademarks or registered trademarks of their respective companies. - All information contained in this document is subject to change without notice. 	

Small Cutout, Flexible Mounting Solutions



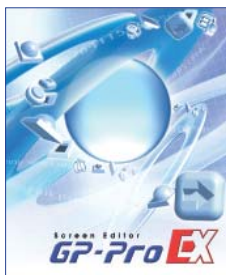
Landscape Mounted



Portrait Mounted

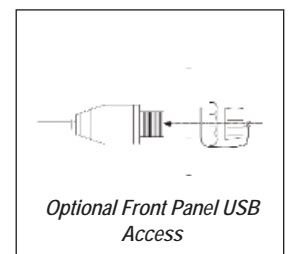
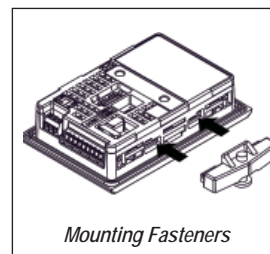
Cutout Dimensions: W 105.0mm [4.13in] x 66.0mm [2.60in]

Software Compatibility



Powered by
Screen Editor
GP-Pro EX
HMI Development Software

Program the AGP4100 Series HMI with the Limited Edition of GP-Pro EX V2.70 (or later) available as free download from www.profaceamerica.com.



Pro-face America
Phone: 734.429.4971
Fax: 734.429.1010
www.profaceamerica.com

Customer Service Hotline: 734.944.0482

For more information

ACCESS www.profaceamerica.com

Pro-face
Your HMI and Industrial PC Authority



California Proposition 65 Warning—Lead and Lead Compounds

Advertencia de la Proposición 65 de California—Plomo y compuestos de plomo

Avertissement concernant la Proposition 65 de Californie—Plomb et composés de plomb

⚠ WARNING: This product can expose you to chemicals including lead and lead compounds, which are known to the State of California to cause cancer and birth defects or other reproductive harm. For more information go to: www.P65Warnings.ca.gov.

⚠ ADVERTENCIA: Este producto puede exponerle a químicos incluyendo plomo y compuestos de plomo, que es (son) conocido(s) por el Estado de California como causante(s) de cáncer y defectos de nacimiento u otros daños reproductivos. Para mayor información, visite : www.P65Warnings.ca.gov.

⚠ AVERTISSEMENT: Ce produit peut vous exposer à des agents chimiques, y compris plomb et composés de plomb, identifiés par l'État de Californie comme pouvant causer le cancer et des malformations congénitales ou autres troubles de l'appareil reproducteur. Pour de plus amples informations, prière de consulter: www.P65Warnings.ca.gov.

All trademarks are the property of Schneider Electric SE, its subsidiaries, and affiliated companies.

Schneider Electric USA, Inc.
800 Federal Street
Andover, MA 01810 USA
888-778-2733
www.schneider-electric.us

Todas las marcas comerciales son propiedad de Schneider Electric SE, sus filiales y compañías afiliadas.

Importado en México por:
Schneider Electric México, S.A. de C.V.
Av. Ejercito Nacional No. 904
Col. Palmas, Polanco 11560 México, D.F.
55-5804-5000
www.schneider-electric.com.mx

Toutes les marques commerciales sont la propriété de Schneider Electric SE, ses filiales et compagnies affiliées.

Schneider Electric Canada, Inc.
5985 McLaughlin Road
Mississauga, ON L5R 1B8 Canada
800-565-6699
www.schneider-electric.ca