

# Pro-face

by Schneider Electric

Versatile software BLUE Ver. 3.0



## Many device drivers available

Connect to control devices around the world. Select the driver that meets your needs.



## Rich and expressive interfaces with intuitive operation

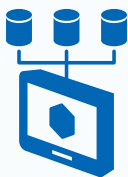
Anyone can reach easily understandable information.

# VERSATILITY



## Reduce time required to create screens with new design methods.

Create and customize screens efficiently



## Effectively use machine information.

Make the best of machine information and communicate smoothly with management systems.





# Visualization Operation

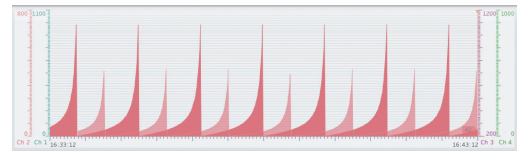
## Responsive design

Zoom out to focus on important information, zoom in for detailed information.



## Easily identify patterns with highly flexible graph features

Using various features, including comparisons graphs, can be more expressive than ever before.



Compare with past data with just one touch. (Multi-scale, Split mode, Rectangle graph, Block trend)

## Just one step to show detailed information

Access information with fewer clicks



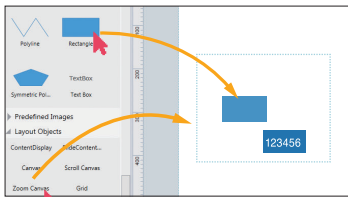
Smooth display with anti-aliasing even when zoomed



# Drawing

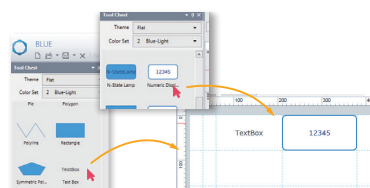
## Easily create gesture screens

Just drag and drop the target objects on screens.



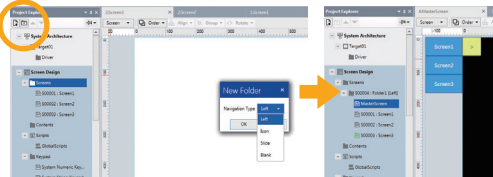
## Reduce time for layout changes

Use grid cell editing to automatically adjust an object's size and location during layout changes.

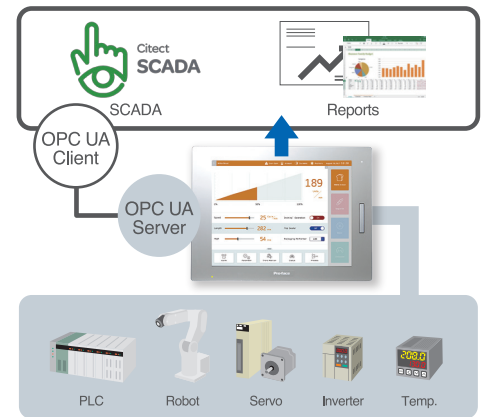


## Set navigation easily

With the navigation feature, you don't need to create screen change switches.



# Data Access & Connectivity



Connect to up to 10 drivers at the same time

\*GP4000:4, GP4100 color model: 2

Model	Description
PFXBLPCLSPM30	BLUE Professional (DVD)
PFXBLPCLZLSPM30	BLUE Professional Group License (3License / License key code)
PFXBLPCLTPM30	BLUE Professional Team License (10License / License key code)

Model	Description
PFXBLECZLSPM30	BLUE Express (DVD) *For only GP4100 color model
PFXBLRCZLSPM30	BLUE Runtime *For Windows PC

Supported Model	
	■ SP5000
	■ GP4000
	■ GP4100 Color model
	■ Pro-face IPC, PC/AT

Some models are not supported. For more details, please see BLUE website.

Please check our website for more details.

## ⚠ WARNING

HAZARD OF OPERATOR INJURY, OR UNINTENDED EQUIPMENT DAMAGE  
Before operating any of these products, be sure to read all related manuals thoroughly.  
Failure to follow these instructions can result in death, serious injury or equipment damage.

- For printing purposes, the colors in this catalog may differ from those of the actual unit.
  - All product names used in this catalog are the registered trademarks or trademarks of their respective companies.
  - Actual user screens may differ from the screens shown here.
  - All information contained in this catalog is subject to change without notice.
  - Electrical equipment should be installed, operated, serviced, and maintained only by qualified personnel.
- No responsibility is assumed by Schneider Electric Japan Holdings Ltd. for any consequences arising out of the use of this material.

**Pro-face**  
by Schneider Electric

Visit our website for more information.  
[www.proface.com](http://www.proface.com)

Global Headquarters  
Schneider Electric Japan Holdings Ltd.  
[JAPAN] Tel: +81-(0)6-6208-3133

North/South American Headquarters  
Pro-face America, Inc.  
[U.S.A.] Tel: +1-734-477-0600

European Headquarters  
Pro-face Europe B.V.  
[THE NETHERLANDS] Tel: +31 (0)23 55 44 099