

# 12.1" Industrial Flat Panel Display - FP-3600T



TouchPanel Operation

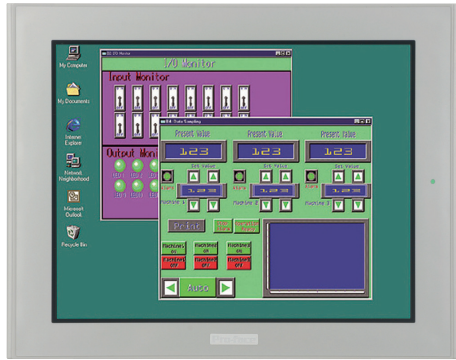


Figure is FP3600-T41

**Features:**

- SVGA Display TFT Touch Panel
- DVI Compatible
- Touch-panel Mouse emulation
- 262,144 colors
- VESA Mounting (75mm)\*3
- NEMA 4/4x/12 Rated (IP65F)
- RoHS Directive-conforming
- Bottom USB interface
- UL, cUL, CE (only for DC24V model)

**Performance Specifications**

Model	FP3600-T11 FP3600-T41-24V
Display Type	TFT Color LCD
Display Colors	262,144 Colors
Display Area	248.0mm [9.76in.] x 186.5.1mm [7.34in.]
Video	VGA Interface (analog RGB) Connector or DVI-D <sup>1</sup> Interface Connector
Graphics Display Resolution	SVGA (800 x 600 dots)
Backlight	CCFL (Replaceable)
Contrast Adjustment	Adjustable via OSD
Touch Screen	RS-232C or USB (Type B, USB 2.0 compatible) <sup>11</sup>
USB (Type A) <sup>2</sup>	Bottom port (USB 2.0 compatible)

\*1 Use one or the other.  
\*2 Available for use when the touch panel USB cable (B type) is connected to a PC.  
\*3 Need to use Rear cover <CA1-RCVLRG-01>

12.1-inch TFT Color LCD  
Flat Panel Monitor

**FP-3600T** AC100/240V SVGA 12.1-inch

Models: FP3600-T11, FP3600-T41-24V

\*Certifications, except RoHS, outlined for 24V DC unit only.

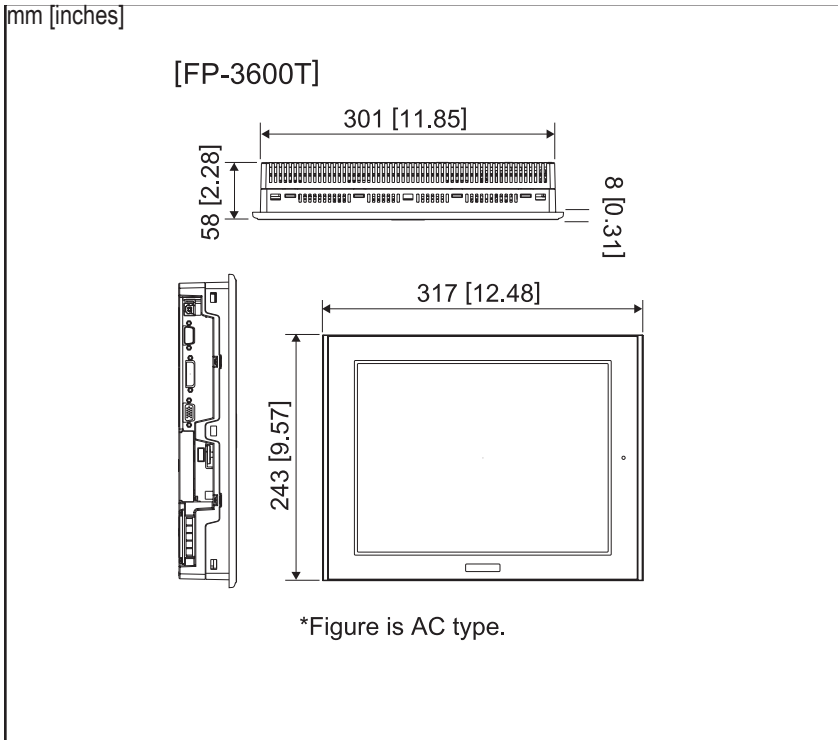


**General Specifications**

Model	FP3600-T11	FP3600-T41-24V
Input Voltage	AC100 / 240V (50/60Hz)	DC24V
Power Consumption	AC100 V0.90A or less, AC240 V0.45A or less	2.08A or less
Allowable Voltage Drop	1 cycle or less (Voltage drop interval must be 1s or more.)	Within 10ms
Voltage Endurance	AC1500V 20mA for 1 minute	AC1000V 20mA for 1 minute
Insulation Resistance	DC500V 10MΩ(min.) (between charging and FG terminals)	
Certifications	RoHS	UL508, CE, CSA-C22.2 No.142-M1987, EN55011 Class A, EN61000-6-2, RoHS
Ambient Operating Temperature <sup>4</sup>	Operating Temperature 0 to 50°C (unit must be installed within 30° of vertical)	
Humidity - Ambient/Storage	10 to 90% RH (Not condensing, wet bulb temperature: 39°C or less).	
Corrosive Gas	Free of corrosive gases	
Noise Immunity	Noise Voltage: 1500Vp-p, Pulse Duration: 1μs, Rise Time: 1ns (via noise simulator)	Noise Voltage: 1000Vp-p, Pulse Duration: 1μs, Rise Time: 1ns
Grounding	100Ω or less	
Electrostatic Discharge Immunity	6kV (complies with EN 61000-4-2)	
Vibration Resistance	JIS B 3502, IEC61131-2 compatible, 5Hz to 9Hz Half Amplitude 3.5mm, 9Hz to 150Hz Constant Acceleration 9.8m/s <sup>2</sup> , Applied in X, Y and Z directions 10 cycles for 100 minutes	
Rating	Equivalent to IP65f (only for the front area when the panel is installed) <sup>5</sup>	
Weight	Approx. 3.5kg [7.7lb]	
External Dimensions	317mm [12.48in.] W × 243mm [9.57in.] H × 58mm [2.28in.] D	
Warranty	Two (2) year	

<sup>4</sup> Ambient Operating Temperature indicates the cabinet interior or panel face temperature.  
<sup>5</sup> Meets IP65f testing requirements. Operation is not, however, guaranteed in every environment.

**FP-3600T - External Dimensions**



**Ordering Information**

Part Number	Description
FP3600-T11	12.1" TFT Color LCD, AC
FP3600-T41-24V	12.1" TFT Color LCD, DC24V

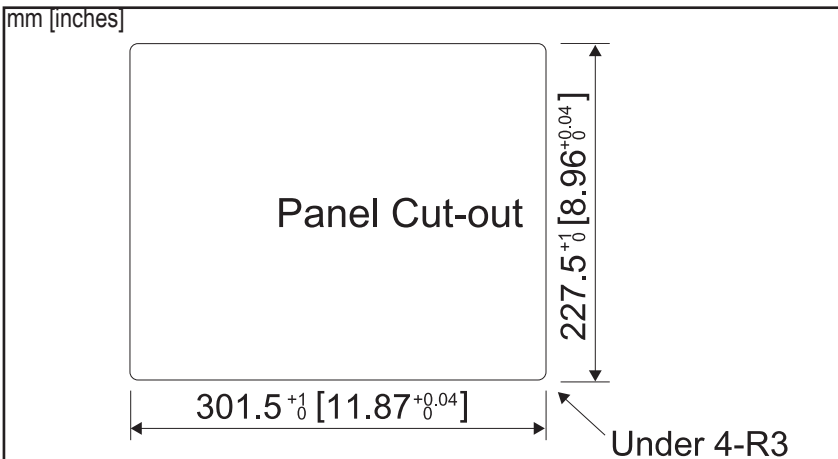
**Accessories or Replacement Components**

Product Name	Part Number
Touch Interface	
Serial Interface Cable	5m FP61V-IS00-O
USB Cable	5m FP-US00
Video Interface	
Analog RGB Cable	4.5m FP-CV02-45
DVI-D Cable	5m FP-DV01-50
Installation Fasteners	GP070-AT01
Backlight (2 pieces/set for 1 unit)	CA3-BLU12-01
Screen Protection Sheet (5 sheets/set)	PSL-DF00

**Caution:** Before operating any of these products, please be sure to read all related manuals thoroughly.

- All product names used in this document are trademarks or registered trademarks of their respective companies.
- All information contained in this document is subject to change without notice.

**FP-3600T - Cut-Out Dimensions**



**Pro-face America**  
Phone: 734.429.4971  
Fax: 734.429.1010  
www.profaceamerica.com

**Customer Service Hotline: 734.944.0482**

For more information  
**ACCESS** www.profaceamerica.com



# California Proposition 65 Warning—Lead and Lead Compounds

## Advertencia de la Proposición 65 de California—Plomo y compuestos de plomo

## Avertissement concernant la Proposition 65 de Californie—Plomb et composés de plomb

**⚠ WARNING:** This product can expose you to chemicals including lead and lead compounds, which are known to the State of California to cause cancer and birth defects or other reproductive harm. For more information go to: [www.P65Warnings.ca.gov](http://www.P65Warnings.ca.gov).

**⚠ ADVERTENCIA:** Este producto puede exponerle a químicos incluyendo plomo y compuestos de plomo, que es (son) conocido(s) por el Estado de California como causante(s) de cáncer y defectos de nacimiento u otros daños reproductivos. Para mayor información, visite : [www.P65Warnings.ca.gov](http://www.P65Warnings.ca.gov).

**⚠ AVERTISSEMENT:** Ce produit peut vous exposer à des agents chimiques, y compris plomb et composés de plomb, identifiés par l'État de Californie comme pouvant causer le cancer et des malformations congénitales ou autres troubles de l'appareil reproducteur. Pour de plus amples informations, prière de consulter: [www.P65Warnings.ca.gov](http://www.P65Warnings.ca.gov).

All trademarks are the property of Schneider Electric SE, its subsidiaries, and affiliated companies.

**Schneider Electric USA, Inc.**  
800 Federal Street  
Andover, MA 01810 USA  
888-778-2733  
[www.schneider-electric.us](http://www.schneider-electric.us)

Todas las marcas comerciales son propiedad de Schneider Electric SE, sus filiales y compañías afiliadas.

Importado en México por:  
**Schneider Electric México, S.A. de C.V.**  
Av. Ejercito Nacional No. 904  
Col. Palmas, Polanco 11560 México, D.F.  
55-5804-5000  
[www.schneider-electric.com.mx](http://www.schneider-electric.com.mx)

Toutes les marques commerciales sont la propriété de Schneider Electric SE, ses filiales et compagnies affiliées.

**Schneider Electric Canada, Inc.**  
5985 McLaughlin Road  
Mississauga, ON L5R 1B8 Canada  
800-565-6699  
[www.schneider-electric.ca](http://www.schneider-electric.ca)