

GP / GLC Software

# GP/GLC Software Version Up News

## Remote Monitoring

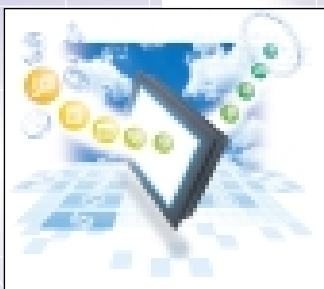


Check your factory data via the Internet.  
Simplify maintenance and support.

Web Operation Software

**GP-Web**

Ver.1.5



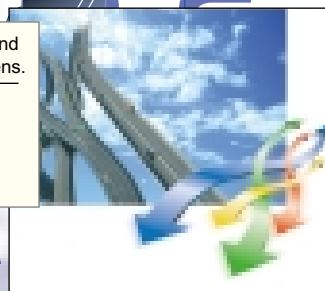
Easily view both present and past production data screens.

Pro-Server Add-on Software

**GP-Viewer**

Ver.1.0

## Data Collection



View the present, review the past.  
Build state of the art data collection systems.

Data Collection Software

**Pro-Server**

with Pro-Studio Ver.4.0



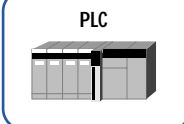
Integrated screen creation and control.  
Easy-to-use, Advanced-level HMI  
Screen Editor and Logic Program Development Software

**GP-PRO/PBIII**

©-Package01



## HMI & Control



Distributed I/O System-Flex Network  
I/O Terminals



## I/O Connection

## Simplicity Evolves

Upgrade

Newly upgraded Pro-face applications are easier than ever to use, and provide programless solutions that make your factory data "visible" and your equipment "open".

Putting the future of Factory Automation at your fingertips.

[www.pro-face.com](http://www.pro-face.com)

## Pro-face Software for:

- Remote Monitoring
- Data Collection
- HMI Screen Editing
- Logic Control Programming



ISO9001  
JQA-1367

# Building Advanced-Level Systems With Pro-face's Newly Updated Applications is Easy!



**Build HMI Systems!**

## GP-PRO/PB III - © - Package 01

Screen Editor and Logic Program Development Software

- Drag & drop features easily combine HMI and Control data.
- Automatically share symbol databases.
- Manage screens and control programs in a single file.

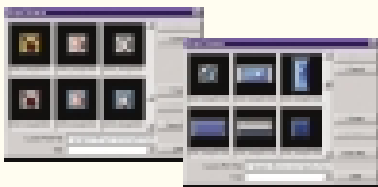
**Screen Creation**

**+** **Logic Program Development**

**= © - Package 01**

GP-PRO/PB III now combines screen creation and logic programming in a single, easy-to-use package.

**Create more realistic graphical screens.**



Buttons, switches and lamps are easy to position. Graphs and numerical displays are simply and quickly set up. The attractive and expressive screens you create will all be easy to use.

**Set up logic programs and enter device settings with just a mouse.**



Use your mouse to quickly and easily enter device settings. Just drag and drop the desired ladder instructions.

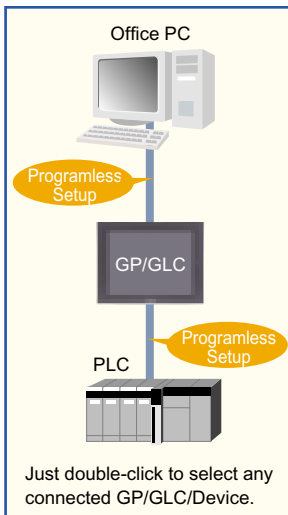
Easy-to-understand menu items let even beginners navigate smoothly through settings.

**Use Data Efficiently!**

Data Collection Software

### Pro-Server with Pro-Studio Ver. 4.0

Quickly collect data from the production site in your host computer. A wide variety of data formats helps optimize your data usage.



Collect your data in popular applications like Word or Excel. In fact, in any applications that support ADO, DDE, DLL, OPC, or SQL.

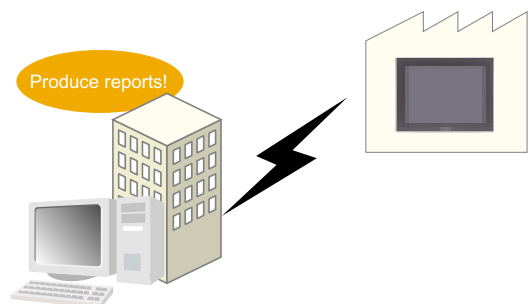
Easily connect a wide variety of control devices to your network, including PLCs, temperature controllers, inverters, servo motors and single-board PCs.

**Web-based Monitoring!**

Web Operation Software

### GP-Web Ver 1.5

Monitor GP/GLC screens at anytime, from anywhere.



Check screen data in real-time from your office PC connected to the Internet or Intranet. A revolutionary level of remote engineering.

- Simply converting GP-PRO/PB III data creates Internet-ready data.
- Access to the latest information at anytime, from any location, with no client settings necessary.

From data collection and monitoring to data displays and equipment control, these feature-packed, advanced-level applications deliver cost-effective data management solutions, with no special programming!

**New Versions!**

# GP-PRO/PB III Screen Editor and Logic Program Development Software Package 01

Screens are more attractive, simpler to create and easier to use.

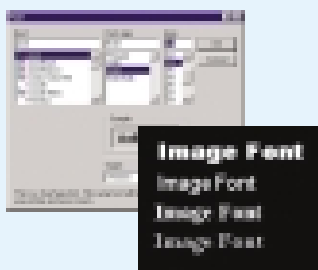
## Screen Data Creation (GP-PRO/PB III Ver. 6.0)

### New Image Fonts!

Use Windows fonts in your GP/GLC screen displays.

### Easy to read screens

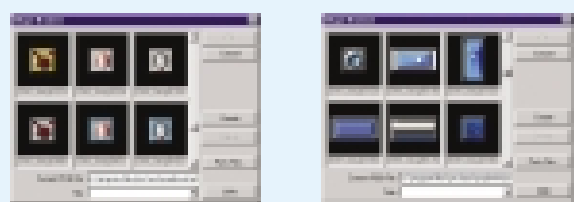
Use Windows fonts in your GP/GLC screens and create familiar, easy-to-read displays. Image fonts expand your range of expression and make your screens easy to understand



Enjoy realistic Image Parts in your screen displays.

### Newly added Image Parts!

Choose from over 1200 different Parts in the expanded Parts Library. You can even use your own BMP or JPEG images!



### Multi-Language Tables!

Use language tables to create a multi-language system

### Easily display any language

Simply set up a text string table and the language of each text string can be converted, even during operation, with the touch of a button or a command. Create multi-language projects quickly, without the need for individual language screens. The ability to change languages at the touch of a button allows you to quickly set up, operate and maintain equipment in any location around the world.



### Easy-to-use Windows

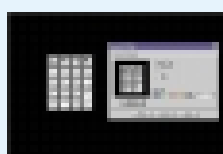
#### Setup is fast and simple.

Windows can be set to appear on GP/GLC screens with the same ease and speed as setting screen parts.



#### One-touch Keypad setup.

Simply touch the Keypad Part icon to call up a numeric display.



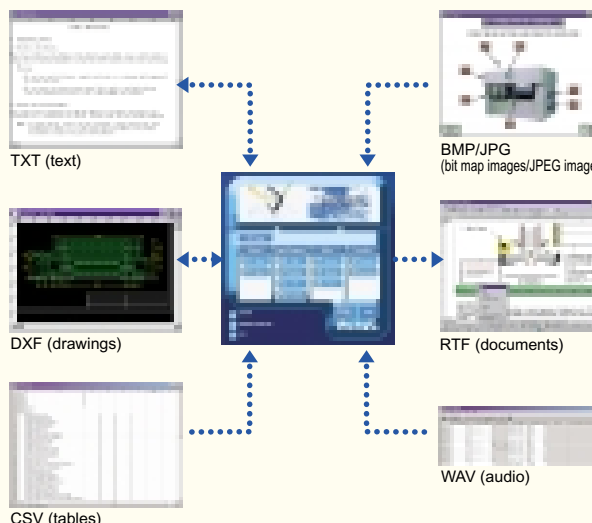
## New and Useful Features

### Easy JPEG creation and data conversion.

- JPEG compatibility allows easy image conversion, including full-color bitmaps.
- Save captured GP/GLC screens in JPEG format.
- Number of word log alarm messages increased.
- LS area doubled.
- Capture and upload simulation screens as JPEG files.
- Easy saving of GP-37W2B recipe, logging, and alarm history data.

### Enjoy easy data sharing, using a variety of popular data formats.

Data can be saved in six standard file formats that are used worldwide.



Sample screens streamline your project creation.

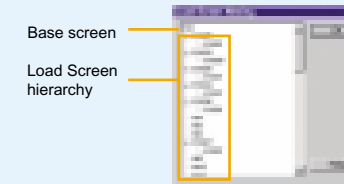
### GP/GLC sample screen libraries

Choose from a large library of sample screens. Great for beginners, these samples make screen set up easy to understand and speed up project creation. You can even modify and re-use them!



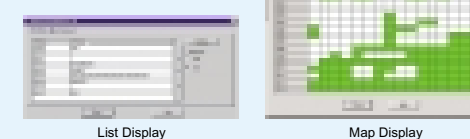
### Instantly see your screen hierarchy

Check your current base screen's load screen nesting in a single, easy-to-read display.



### Improve device allocation efficiency

Quickly check your project's used and available device addresses via a list or map.



### Auto document function simplifies production of manuals and history logs.

Simply select the necessary items for fast and easy printout of documentation.



## Logic Programming

Simultaneous screen and control design speeds up project creation!

Speed up downloads of screen and program data.

### Simultaneous data transfer

Save time by transferring screen and logic program data to the GLC at the same time. GLC screen data and logic programs are stored together in a single, easy to manage project file.

Easily share program variables

### Automatic import

The logic program is automatically imported when you save screen data, which eliminates the tedious and time-consuming 2-step process of saving screen data and logic program data separately.

Enjoy a wider range of control.

### Additional logic instructions

3 additional instructions bring greater freedom to logic programming, and raise the level of control instructions to that of a compact PLC.

Simplify variable management

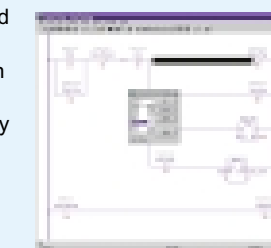
### Display list of available variables

Enjoy a single easy-to-read list of unused variables. Keep your variables under control while you set up I/O points.

Perform maintenance while your production line is running.

### Online program editing

Logic programs can now be edited while the GLC and the host computer are online. This function enables a quick response to sudden problems by allowing easy maintenance without shutting down the system.



Use an Ethernet network or a CF Card to share and store data.

### Ethernet and CF Card compatibility

Built-in Ethernet and CF Card compatibility makes it easy to back-up your screen data and logic programs. Use CF Cards to quickly set up and maintain project data in your factory floor GP/GLC units.



## Data Collection Software

# Pro-Server with Pro-Studio Ver.4.0

\*GP-PRO/PB III C-Package01/Ver.6.0 or later Required.

"See" past production conditions.

### Playback function

Automatically record, collect and play back production data. No need for special programming. Reuse your data in Excel, GP-Viewer, SCADA software, databases and applications supporting ADO, DDE, DLL, OPC or SQL, as well as VB/VC applications.

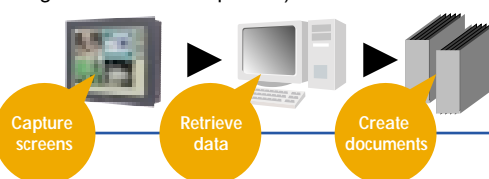


Just slide the timer bar and view past production data.

Remote Screen Image Capturing!

### Screen capture function

GP/GLC screens can be captured from a remote location and saved to a CF Card as a JPEG file. The data can then be collected by Pro-Server for easy checking on a PC. (When using the Video-mix Unit, video images can also be captured.)



## Pro-Server Add-on Software

# GP-Viewer Ver. 1.0

View past or present production data as easily as you would a video.

GP/GLC screens at the production site can be monitored directly on Pro-Server. Use the data playback feature to check previously recorded production data and visually trace the source of hard-to-find problems.



\*Pro-Server with Pro-Studio Ver.4.0 or later Required.

## Web Operation Software

# GP-Web Ver 1.5

"See" your production site from virtually anywhere in the world!

### Report production

GP-Web lets you check site conditions and quickly print that data out. This can save hours of work when creating reports.

### Real-time monitoring

Check your production site data from virtually anywhere, 24 hours a day, for real-time monitoring.

### Remote maintenance

Check factory conditions from your office, or even while you're on the road, to ensure a quick response to problems.

### Cell phone compatibility

You can even check site conditions on a cellular phone with Internet connectivity. A time-saving advantage for active business people.

\*Pro-Server with Pro-Studio Ver.4.0 or later Required.

## Software Environment Specifications

### GP-PRO/PB III C-Package01

Product No.	PC	OS	Screen Resolution	Hard Disk Space	Memory	Drive Type
GPPRO-CNT01W-P01	Windows compatible PC with Pentium II 266MHz or faster.	Japanese, English, Chinese (simplified and traditional), or Korean Windows® 95/98/2000/Windows NT®4.0: Service Pack 3 or later/XP	SVGA (800 x 600 pixels) or higher	Minimum: 65MB Recommended: 120MB	Minimum: 32MB Recommended: 64MB	CD-ROM drive

GP-PRO/PB III for Windows V6.0 screen editor software is also sold separately. Consult your dealer or Pro-face sales representative for details.

### Pro-Server with Pro-Studio Ver. 4.0 (when used with GP-PRO III Ver. 6.0 or C-Package01)

Product No.	PC/OS	OS	Screen Resolution	Hard Disk Space	Memory	Drive Type	Network Protocol
PSW-ED01-V40	Windows compatible PC running Windows® 95/98/2000/Me/Windows NT®(4.0 or later)/Pentium® 133MHz or faster (recommended: Pentium II 200MHz)	Japanese, Chinese (simplified or traditional), Korean or English Windows®95:OSR2 or later/98/2000/Me/Windows NT®4.0:Service Pack 3 or later	VGA (640 x 480 pixels) or higher	Minimum: 20MB Recommended: 30MB	Minimum: 32MB Recommended: 128MB	CD-ROM drive	TCP/IP (set from the control panel)

### GP-Web Ver.1.5

Product No.	PC	OS	Screen Resolution	Related Programs (FEP, etc.)	Hard Disk Space	Memory	Mouse
CW-CJ01-V15	Server (Runtime Environment)	Windows NT® 4.0 Server SP4.0 or later Windows® 2000 Server/Professional	SVGA (64,000 colors or more)	Pro-Server with Pro-Studio for Windows Ver.3.0 or later IIS Ver.4.0 or later (Windows NT® 4.0 Server, Windows® 2000 Server/Professional) Microsoft Internet Explorer Ver.5.0 or later	Minimum: 50MB	Minimum: 64MB Recommended: 128MB	Windows/PS2 compatible (customer supplied)
	Server (Development Environment)	Windows compatible PC with Pentium®133MHz or faster	Windows NT® 4.0 Server/Workstation SP4.0 or later Windows® 2000 Server/Professional	GP-PRO/PB III for Windows Ver.4.0 or later Pro-Server with Pro-Studio for Windows Ver.4.0 or later			
	Client	Windows® 95 OSR2 or later/Windows® 98/Windows® Me/Windows NT® 4.0 Server/Workstation SP4.0 or later Windows® 2000 Server/Professional	SVGA (256 colors)	Microsoft Internet Explorer Ver.5.0 or later			

## Software Lineup

 Screen Editor and Logic Program Development GP-PRO/PB III C-Package01 GPPRO-CNT01W-P01	 Screen Editor GP-PRO/PB III for Windows Ver.6.0 GPW-PB01W-V60	 Data Collection Software Pro-Server with Pro-Studio Ver. 4.0 PSW-ED01-V40	 Pro-Server Add-on Software GP-Viewer Ver.1.0 PSW-GV01-V10	 Web Operation Software GP-Web Ver. 1.5 GW-CJ01-V15
---	---	---	---	--

A wide range of operator interfaces that combine seamlessly in your factory system, making all your factory and device data truly "visible".

Beautiful graphics, easy to operate, and fast data transfer.  
Graphic Operator Interfaces for a new era.

## GP 2000 SERIES



Data, display, operation...plus control functions.  
High-performance controllers for versatile control systems.

## GLC 2000 SERIES



**Caution:** Before operating any of these products, please be sure to read all related manuals thoroughly.

- For printing purposes, the colors in this catalog may differ from those of the actual unit.
- Actual user screens may differ from the screens shown here.
- LCD screens may exhibit minute grid-points (light and dark) on the Display Panel surface. Also, "Contouring" - where some parts of the screen are brighter than others, producing a wavelike pattern - may occasionally occur. Both are normal for an LCD display and are not defects.
- Microsoft Windows®2000, Windows NT®, Windows®XP, Windows®95, Windows®98, Windows®Me are registered trademarks of Microsoft Corporation.
- Microsoft® Excel, Word, Access are registered trademarks of Microsoft Corporation.
- All product names used in this catalog are the registered trademarks of their respective companies.
- All information contained in this catalog is subject to change without notice.

ACCESS!! [www.pro-face.com](http://www.pro-face.com)

### Worldwide Contacts:

General Info: [info@pro-face.com](mailto:info@pro-face.com)  
Technical Info: [support@digital.co.jp](mailto:support@digital.co.jp)

©2002 Digital Electronics Corporation All Rights Reserved.

**Global Head Office**  
Digital Electronics Corporation  
8-2-52 Nanko-higashi  
Suminoe-ku, Osaka 559-0031  
JAPAN  
Tel: +81-(0)6-6613-3116  
Fax: +81-(0)6-6613-5888  
<http://www.pro-face.com>  
[info@pro-face.com](mailto:info@pro-face.com)

**China**  
Pro-face China Representative Office  
3606C, Southern Security Tower  
No. 580, Nanjing Road West  
Shanghai 200041  
P. R. CHINA  
Tel: +86-(0)21-5234-1646  
Fax: +86-(0)21-5234-1649  
<http://www.proface.com.cn>  
[proface@proface.com.cn](mailto:proface@proface.com.cn)

**South Korea**  
Pro-face Korea Co., Ltd.  
Room #701, Jaeyoung Building  
678-10 Deungchon-dong  
Kangseo-ku, Seoul 157-030  
SOUTH KOREA  
Tel: +82-(0)2-658-6835  
Fax: +82-(0)2-3664-6839  
<http://www.proface.co.kr>  
[proface@proface.co.kr](mailto:proface@proface.co.kr)

**Taiwan**  
Pro-face Taiwan Co., Ltd.  
2F, No. 69 Fushing North Road  
Taipei 105  
TAIWAN R.O.C.  
Tel: +886-(0)2-2772-5208  
Fax: +886-(0)2-8773-7892  
<http://www.proface.com.tw>  
[proface@proface.com.tw](mailto:proface@proface.com.tw)

**North/South America**  
Pro-face America, Inc./ Xycom  
750 North Maple Road  
Saline, MI 48176  
U.S.A.  
Tel: +1-734-429-4971  
Fax: +1-734-429-1010  
<http://www.profaceamerica.com>  
[sales.info@profaceamerica.com](mailto:sales.info@profaceamerica.com)

**European Head Office**  
Pro-face Europe B.V.  
Amsteldijk 166  
1079 LH Amsterdam  
THE NETHERLANDS  
Tel: +31 (0)20 6464 134  
Fax: +31 (0)20 6464 358  
<http://www.proface.com>  
[info@proface.com](mailto:info@proface.com)

**France**  
Pro-face France S.A.S.  
Le Vinci  
1, rue Henri Becquerel  
77290 Mity-Mory  
FRANCE  
Tel: +33 (0)1 60 21 22 91  
Fax: +33 (0)1 60 21 22 92  
<http://www.pro-face.com>  
[info@proface.fr](mailto:info@proface.fr)

**Germany**  
Pro-face Deutschland GmbH  
Albertus-Magnus-Str. 11  
42719 Solingen  
GERMANY  
Tel: +49 (0)212 258 260  
Fax: +49 (0)212 258 2640  
<http://www.pro-face.de>  
[sales@pro-face.de](mailto:sales@pro-face.de)

**Italy**  
Pro-face Italia S.p.A.  
Via Carcano 44  
20033 Desio (MI)  
ITALY  
Tel: +39 0362 33 71 63  
Fax: +39 0362 30 77 25  
<http://www.proface.com>  
[info.italia@proface.com](mailto:info.italia@proface.com)

**Scandinavia**  
Pro-face Scandinavia ApS  
Copenhagen Europe Centre  
Vesterbrogade 149  
1620 Copenhagen V  
DENMARK  
Tel: +45-33 27 06 16  
Fax: +45-33 27 05 06  
<http://www.proface.com>  
[scandinavia@proface.com](mailto:scandinavia@proface.com)

**United Kingdom**  
Pro-face UK, Ltd.  
The Venture Centre,  
The Science Park,  
Coventry CV4 7EZ  
ENGLAND  
Tel: +44 (0)2476 692363  
Fax: +44 (0)2476 692365  
<http://www.profaceuk.com>  
[info@profaceuk.com](mailto:info@profaceuk.com)