



# OPERATOR INTERFACE PRODUCTS APPLICATION NOTE

Subject: PC/AT Softscreen into Channel Zero on AB SLC500

AN# 1006A

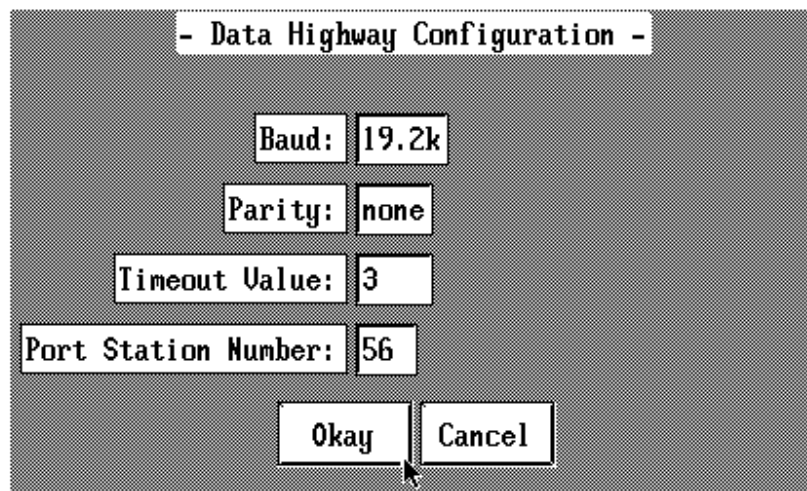
Date: 7/16/96

Name: Chris Biernacki

Page: 1 of 4

Description: Proper settings for communications

These are the settings for the Softscreen Port Configuration and the Channel Zero Configuration that will allow Softscreen to "talk" to a SLC500 via Channel Zero. These may not be the only settings that will allow communications, but these settings have been verified to facilitate communications. (NOTE: Softscreen must be configured for DATA HIGHWAY. This connection will allow Softscreen to address octally the N9 integer register in the SLC500 PLC. ex. N9:0 = [0], N9:1 = [1], N9:8 = [10],... N9:255 = [377])



**Softscreen settings to allow PC/AT Softscreen to connect to  
Channel 0 on a SLC500 PLC**



# OPERATOR INTERFACE PRODUCTS APPLICATION NOTE

Subject: PC/AT Softscreen into Channel Zero on AB SLC500

AN# 1006A

Date: 7/16/96

Name: Chris Biernacki

Page: 2 of 4

Description: Proper settings for communications

- PLC Configuration -

Name	Type	Address
PLC0	SLC-500	1
PLC28	PLC 2	0
PLC29	PLC 2	0
PLC30	PLC 2	0
PLC31	PLC 2	0
PLC32	PLC 2	0
PLC33	PLC 2	0
PLC34	PLC 2	0
PLC35	PLC 2	0

**Softscreen settings to allow PC/AT Softscreen to connect to  
Channel 0 on a SLC500 PLC**



# OPERATOR INTERFACE PRODUCTS APPLICATION NOTE

Subject: PC/AT Softscreen into Channel Zero on AB SLC500

AN# 1006A

Date: 7/16/96

Name: Chris Biernacki

Page: 3 of 4

Description: Proper settings for communications

```
===== CHANNEL CONFIGURATION =====  
CHANNEL 0 CONFIGURATION  
  Current Communication Mode: SYSTEM  
    System Mode Driver: DF1 FULL-DUPLEX  
    User Mode Driver: Reserved  
      Write Protect: DISABLED  
      Mode Changes: Reserved  
  Mode Attention Character: Reserved  
    System Mode Character: Reserved  
    User Mode Character: Reserved  
  Edit Resource/File Owner Timeout: 60 (seconds)  
  
CHANNEL 1 CONFIGURATION  
  System Mode Driver: DH-485 MASTER  
    Write Protect: DISABLED  
  Edit Resource/File Owner Timeout: 60 (seconds)
```

**Allen Bradley APS v5.11 settings to allow PC/AT Softscreen to  
connect to Channel 0 on a SLC500 PLC**



# OPERATOR INTERFACE PRODUCTS APPLICATION NOTE

Subject: PC/AT Softscreen into Channel Zero on AB SLC500

AN# 1006A

Date: 7/16/96

Name: Chris Biernacki

Page: 4 of 4

Description: Proper settings for communications

## CHANNEL 0 SYSTEM MODE CONFIGURATION

Communication Driver:	DF1 FULL-DUPLEX		
Diagnostic File:	Reserved		
Baud Rate:	19200	Parity:	NONE
Duplicate Detect:	ENABLED	Error Detect:	BCC
ACK Timeout [x20 ms]:	50	NAK Retries:	3
Source ID:	9	ENQ Retries:	3
Control Line:	NO HANDSHAKING	Embedded Responses:	ENABLED

**Allen Bradley APS v5.11 settings to allow PC/AT Softscreen to connect to Channel 0 on a SLC500 PLC**

**Cable: 2-3, 3-2, 5-5**