

PenMount Windows NT Software Installation for DMC9000 controller

This driver supports Windows NT. PenMount Windows NT driver detail contents are list as below:

<i>_USER1.HDR</i>	<i>_ISDEL.EXE</i>
<i>_SETUP.DLL</i>	<i>_SYS1.CAB</i>
<i>_SYS1.HDR</i>	<i>_USER1.CAB</i>
<i>_INST32I.EX</i>	<i>_CONFIG.INI</i>
<i>DATA.TAG</i>	<i>DATA1.CAB</i>
<i>DATA1.HDR</i>	<i>INFO.TXT</i>
<i>LANG.DAT</i>	<i>LAYOUT.BIN</i>
<i>LICENSE.TXT</i>	<i>OS.DAT</i>
<i>README.TXT</i>	<i>SETUP.LID</i>
<i>SETUP.INS</i>	<i>SETUP.INI</i>
<i>SETUP.EXE</i>	<i>SETUP.BMP</i>

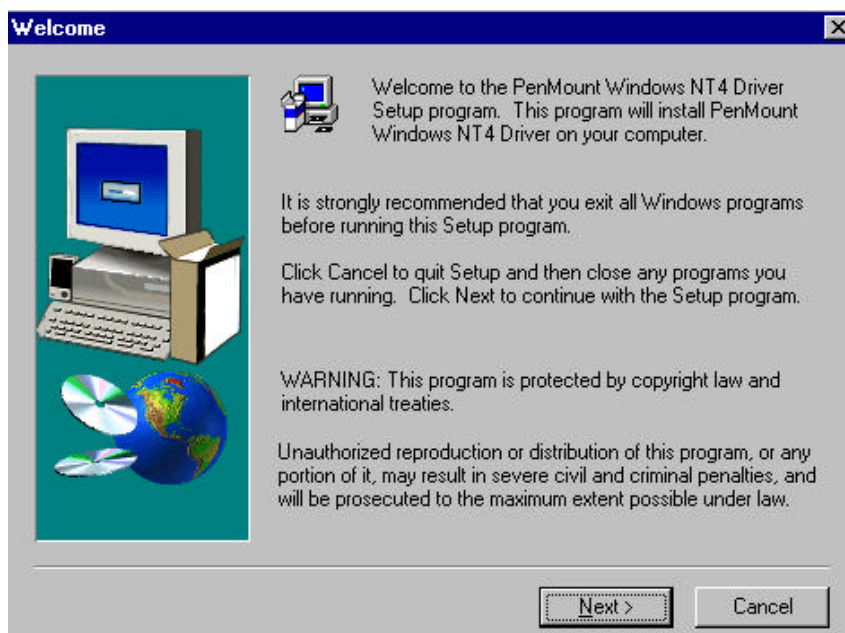
To install the software to your computer, your computer system must have Windows NT system running and installed PenMount Serial Interface control board such as 90A4, 9026B, 9036 or 9084 control board inside.

If you have an older version of PenMount Windows NT driver installed in your system, please remove it first.

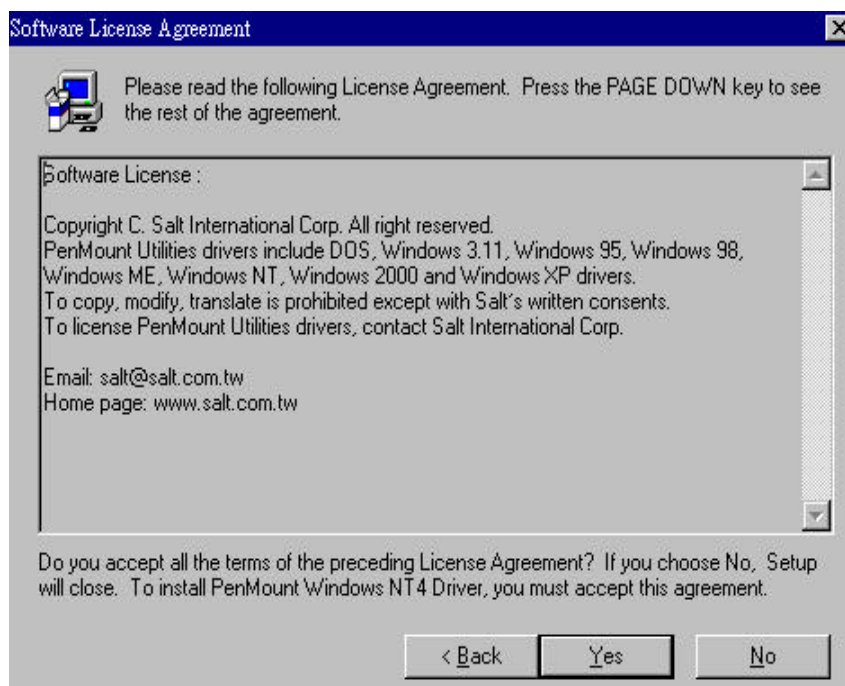
Follow up the steps below to install the PenMount Windows NT driver.

1. Insert PenMount Windows NT driver CD ROM. From the "Start" menu, select "Run".
2. There is one entry "setup.exe" in PenMount Windows NT driver. Or use browse to find it.

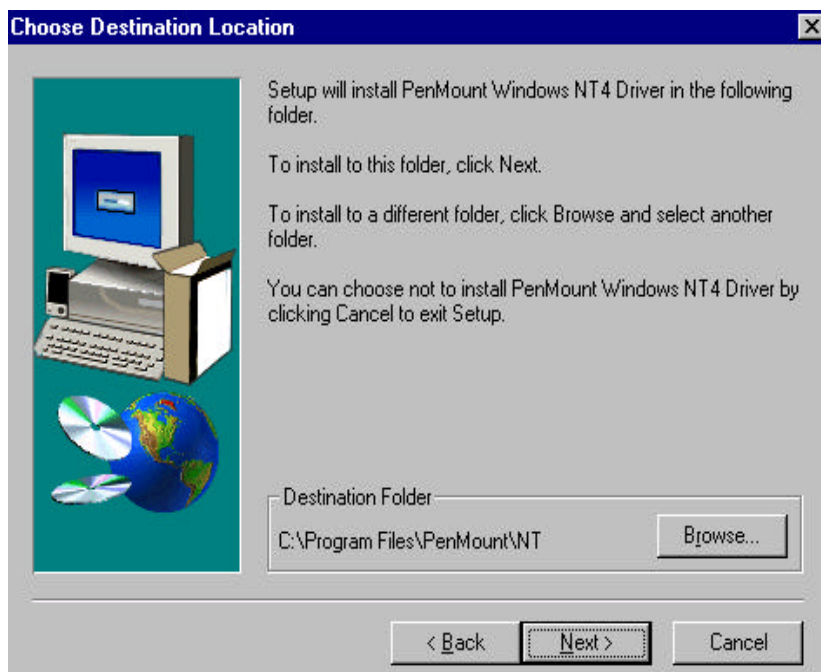
3. The screen displays "welcome" message appear. Select "Next".



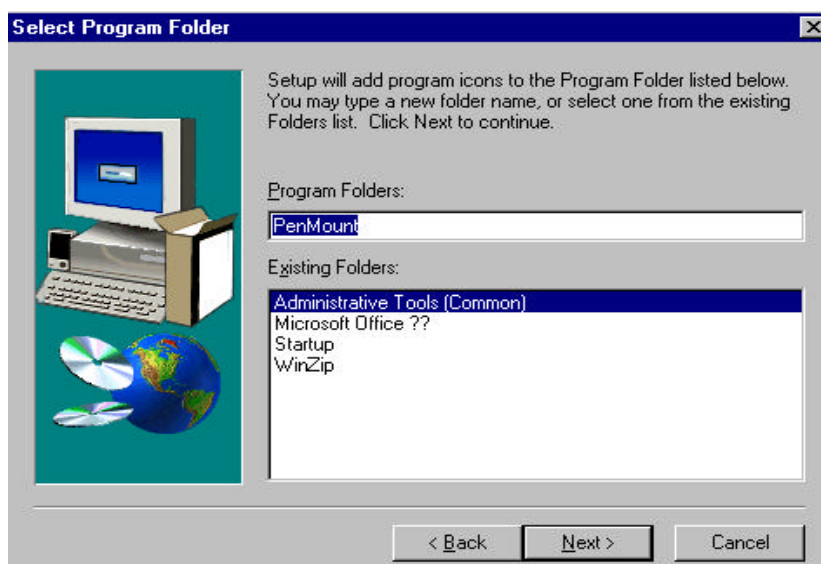
4. The next screens are "Software License Agreement" and "Information", select "Yes" and "Next".



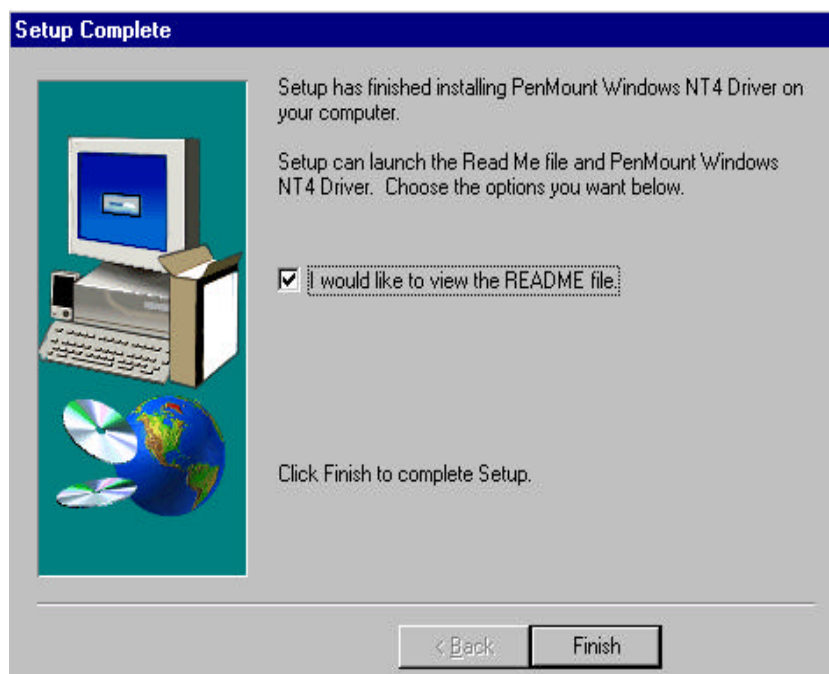
5. The next screen is "Choose Destination Location", it is for Setup installing PenMount Utilities in the folder: C:\Program\ Files\PenMount\NT, select "Next" or modify the folder name you like to use.



6. The next screen is "Select Program Folder", the default is set at "PenMount ", select "Next" or change it.



7. After selecting well, the screen is showing "Start Copying Files", select "Next" for starting copy files to system. The screen now is "Setup Complete", select "Finish".

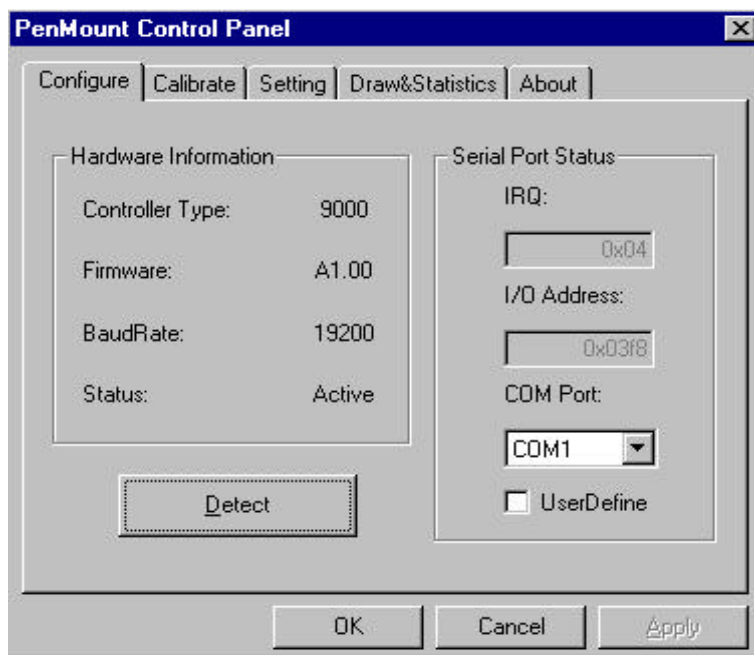


“PenMount Control Panel” now is on the screen. Functions are explained as follows. Set the ‘Configure’ now by using ‘DETECT’ icon to auto-detecting the correct com port. And reboot system. After rebooting system, do calibration now, select ‘Calibrate’ in ‘PenMount Control Panel’ from ‘PenMount Utilities’ that is in ‘Programs’ to adjust the mapping of touch point and screen display.

PenMount Windows NT Driver Functions

A. PenMount Control Panel

Configure:



There are several functions on this configure:

Controller Type:

It shows the PenMount controller type: 9000

Baud Rate:

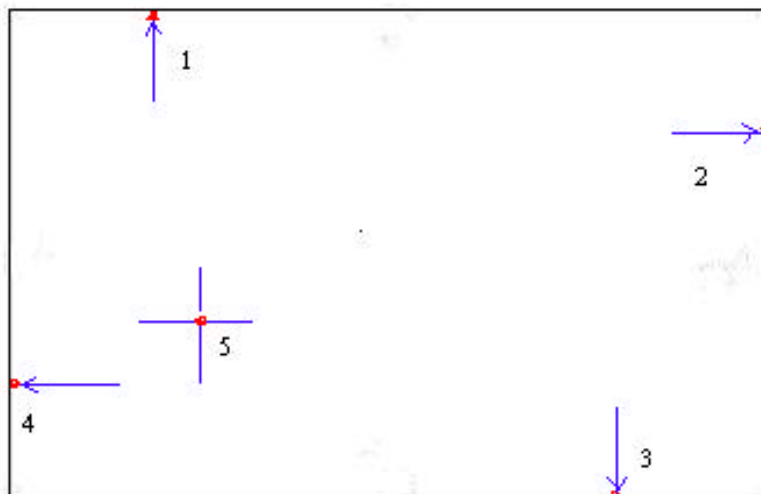
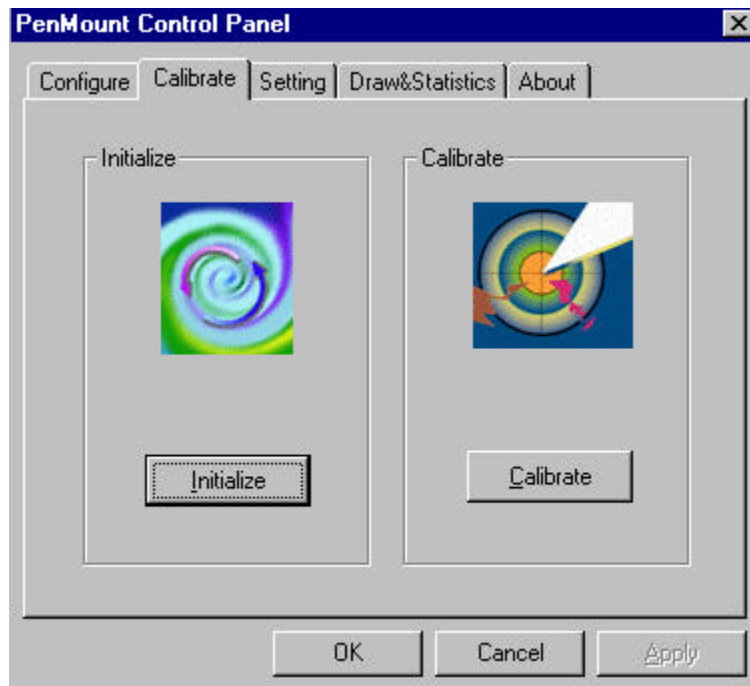
DMC9000 controller baud rate is fixed at 19200;

Detect:

"Detect" icon is the auto-detecting key for detecting COM port, IRQ number, based address.

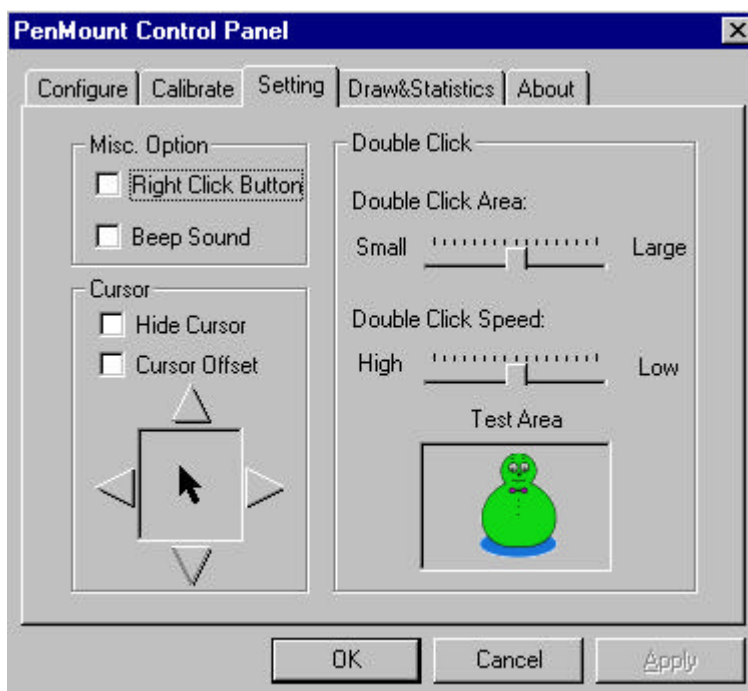
Calibrate:

There are two areas: "Initialize" for initializing the controller and "Calibrate" for adjusting the screen and touch screen matching.



Setting:

There are several functions on this setting:

**Misc. Option:**

"Right Click Button" is for setting touch click as mouse right button. "Beep Sound" is for turning on or off the beep sound.

Cursor:

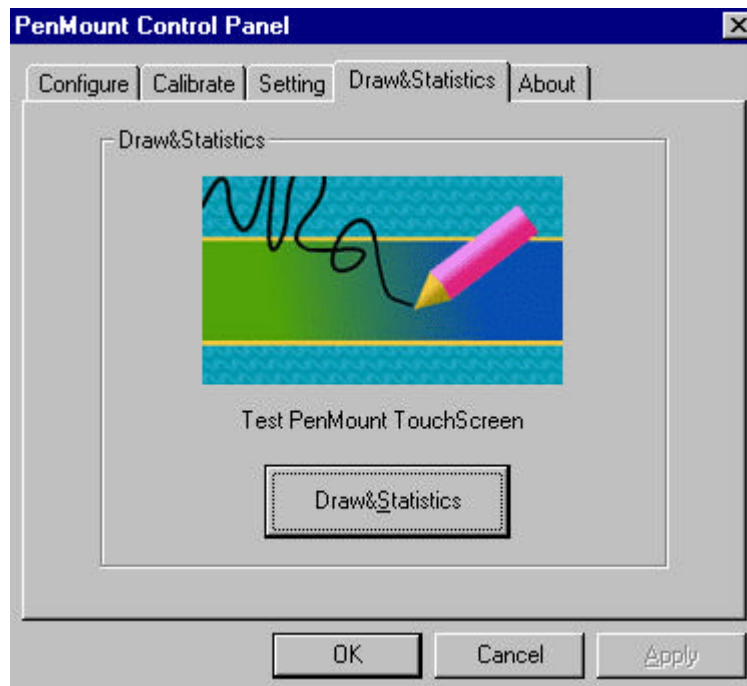
"Hide Cursor" and "Cursor Offset", user may offset the touch cursor display place by tuning the "Cursor Offset" function.

Double Click :

There are three areas, "Double Click Area", "Double Click Speed" and "Test" area. There is a tumbler swing once you double click in the test area. Move the button of "Double click Area" and "Double Click Speed" to adjust the double click performance

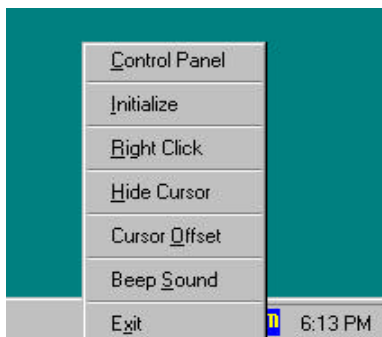
Draw&Statistics:

Test or demonstrate PenMount touch screen operation, also the touch location is shown on the display, touch “Draw&Statistics” to start.

**About:**

B. PenMount monitor

The PenMount monitor icon is shown in the menu bar of Windows NT system when turn on PenMount Monitor from PenMount Utilities. There are several functions on PenMount monitor :



Initial :

To reset PenMount controller chipset. Normally, user does not need to reset the controller chipset, PenMount Windows NT driver will check the controller chipset automatically.

Right Click Button:

When select this function, there is a mouse icon shown in the right-bottom place of screen. It shows 'left button' being as default for normal use, touch this mouse icon to change the next touch to be 'Right Button' function. After one touch, the mouse icon will change to 'Left Button' automatically. If user needs to use right button again, user has to touch the mouse icon again for changing the button function.

Hide Cursor:

To hide cursor, if user select to hide cursor, the cursor will be disappear until turn off this 'Hide Cursor' function.

Cursor Offset:

Adjust the cursor offset from 'SETTING' of PenMount Control Panel. Once select this function, mouse will be offset according to setting.

Beep Sound:

Turn on or off beep sound.

Exit:

Close the PenMount Monitor function.

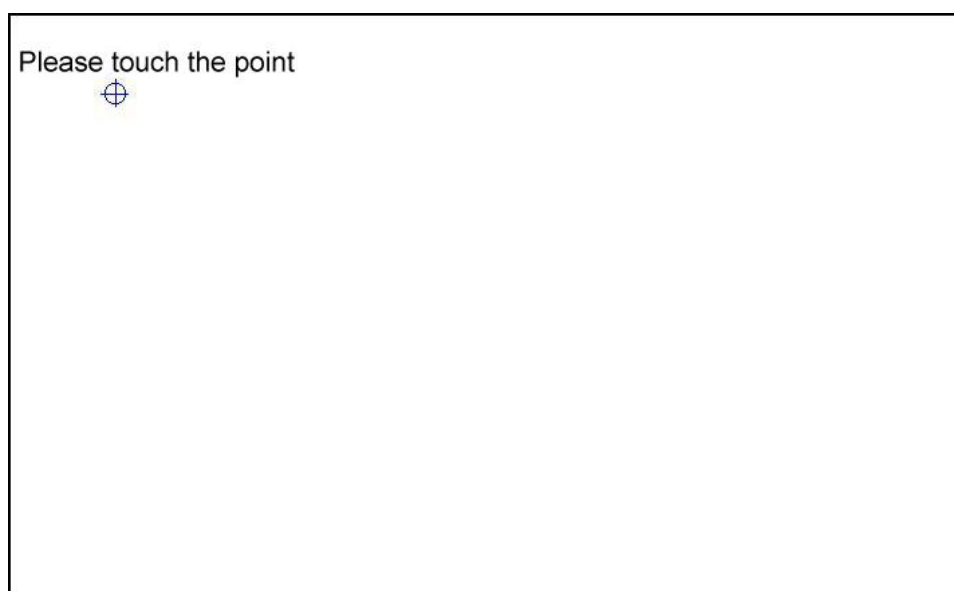
C. PenMount Rotating Functions:

PenMount driver for Windows NT supports several rotating software such as

- Portrait's Pivot Screen Rotation Software
- ATI Display Driver Rotate Function
- nVidia Display Driver Rotate Function
- SMI Display Driver Rotate Function
- Intel 845G/GE Display Driver Rotate Function

How to operate the rotate function:

1. Install the rotate software first.
2. Chose the rotate function, and then you will see the calibration point, please touch that point, and cursor will map the rotation itself.



How to uninstall PenMount Windows NT driver

Before you uninstall PenMount Windows NT driver, please 'EXIT' 'PenMount Monitor' that is in menu bar.

From 'PenMount Utilities' of 'Programs', select 'Uninstall' utility, computer will ask you "are you sure you want to completely remove 'PenMount Utilities' and all its components"? Select 'Yes' to remove PenMount Windows NT driver.