



Pro-face AGP3000 & SICK Scanners

Tested, Trusted, Out-of-the-Box

HMI Scanner Solutions

Pro-face and SICK advanced HMI scanner solutions quickly integrate bar code sensing for part tracking, identification and data sharing for manufacturing environment applications. With minimal knowledge, a user can quickly set up an advanced HMI bar code scanning system to increase operation efficiency, reduce operation logistic errors, and enhance fast part identification using part images.

Differentiating Value:

- Automatic recipe loading using bar code reader data
- Direct connect to AGP operator interface, eliminates need for expensive PLC cards
- Eliminates dedicated bar code stations cutting operation costs
- Extensive bar code data sharing for instant system-wide updates

Applications:

- Part Tracking & Identification
- Logistics and Distribution
- Part Marking and Picking
- Document Processing

Markets:

- Automotive Manufacturing
- Pharmaceutical
- Food and Beverage
- Material Handling

Operation:

The AGP3000 operator interface gathers scanner data information from SICK bar code scanners via serial or USB. Scanner and part information is displayed on screen and is communicated to other networked (including Ethernet) factory devices such as PLCs, printers or a SCADA system.

Easy Integration Tools

Pro-face provides tools to make it easy to quickly obtain information from SICK bar code scanners:

- A "How To" setup guide
- "Getting Started" example project
- Extensive technical resource library on our website

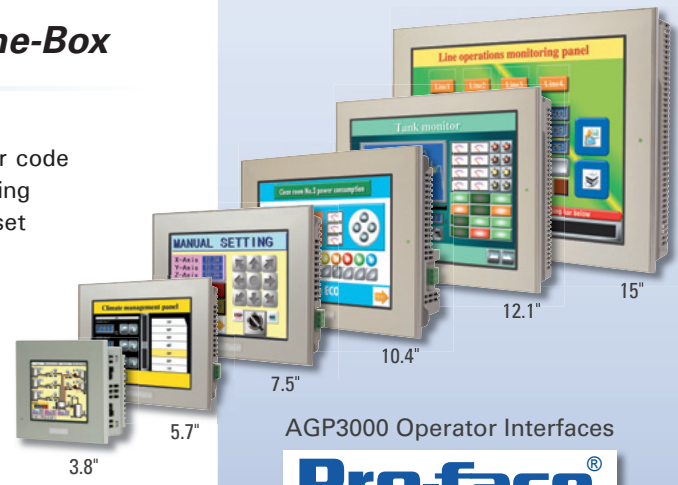
Functionality/Capabilities

Functionality Includes:

- Bar code Input can be handled as numeric or ASCII data
- Log data or load recipes to other networked devices automatically
- Support 1 and 2 dimensional readers

Capabilities Include:

- Supports wired or wireless connectivity for application flexibility
- Pass bar code information to any other networked device in your system
- Transfer and share data using multiple different protocols via AGP3000 unit
- Simultaneously send/receive information using a mix of Ethernet, USB and serial communications



AGP3000 Operator Interfaces



Serial

USB



Represented by:

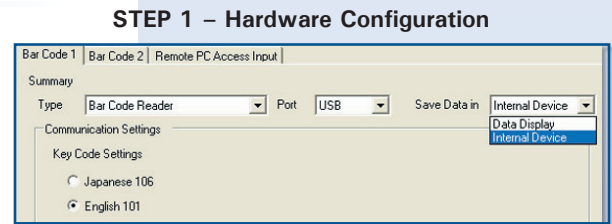


Easy Configuration

Using the Pro-face GP-Pro EX Screen and Logic Editing software bar code scanner setup could not be easier.

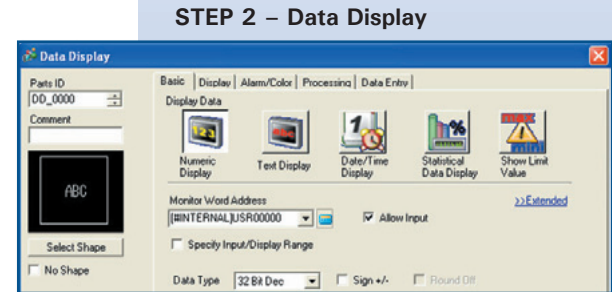
STEP 1 – Hardware Configuration

- 1) Select Bar Code (1D) or 2 Dimensional Code Scanner
- 2) Select the connection method (Serial or USB)
- 3) Select to save the data to a standard numeric display or to the internal memory of the HMI. For 2 Dimensional codes internal memory is recommended: 30,000 16-bit registers are available in the AGP for fast access



STEP 2 – Displaying the code Input

- 1) In the GP-Pro EX Screen Editor place a standard Data Display
- 2) Select Numeric Display (for 16 or 32 bit Decimal or Floating Point data) or Text Display (for ASCII data)
- 3) Select the destination (Internal Memory or directly to your Device/PLC)
- 4) Select "Allow Input"
- 5) Select the data type or string length



STEP 3 – Enable code Input

- 1) In the Data Display select the Data Entry tab
- 2) Click "Extended" and select "Input Bar Code"

Supported Units

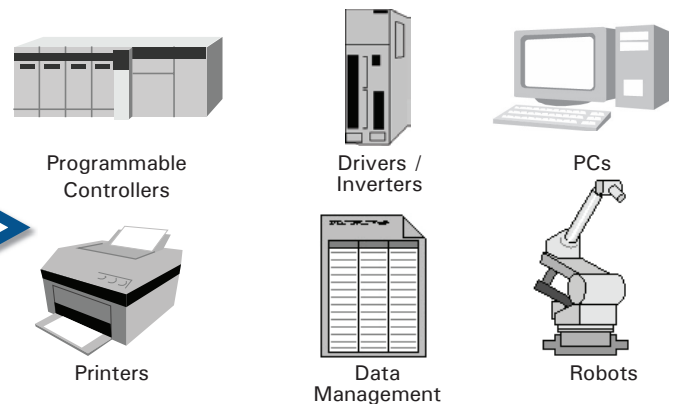
Pro-face AGP3000 models are available in 3.8" to 15" screen sizes with Amber, Monochrome and STN or TFT Color touch screen displays.

Panel Size	Model	Display	Resolution
3.8"	AGP3200	TFT / Mono (Amber)	320X240 (QVGA)
5.7"	AGP3300	TFT / STN / MONO (B/W)	320X240 (QVGA)
7.5"	AGP34x0	TFT / STN	640X480 (VGA)
10.4"	AGP35x0	TFT / STN / MONO (B/W)	640X480 (VGA) or 800x600 (SVGA)
12.1"	AGP36x0	TFT	800X600 (SVGA)
15"	AGP3750	TFT	1024X768 (XGA)



AGP3000
Operator Interface

Enterprise-wide connectivity: The Pro-face AGP3000 extensive driver support interfaces directly to wide variety of factory floor hardware.



Useful links:

- <http://www.profaceamerica.com>
- <http://www.sickusa.com>

750 North Maple Road • Saline, MI 48176 USA
Tel: 734-429-4971 • Toll Free: 800-289-9266
<http://www.profaceamerica.com>
E-mail: sales@profaceamerica.com

Pro-face

