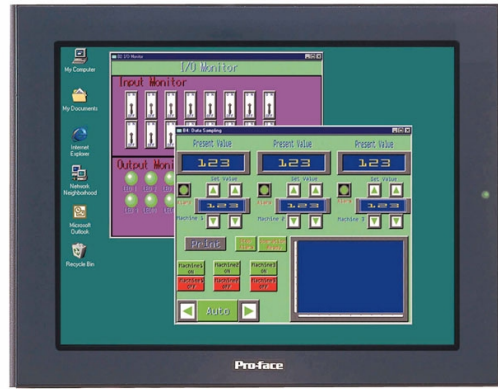


## FP2000 Series Monitors

10.4" and 12.1" TFT Color Displays, Serial/USB Touch Interfaces



**FP2500-T42-24V**  
10.4" TFT VGA (640 x 480) Display



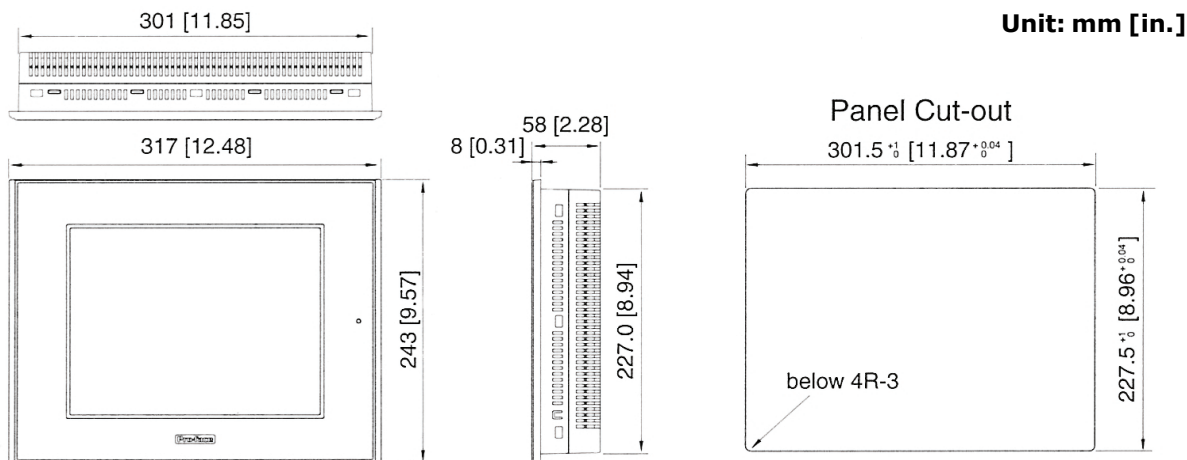
**FP2600-T42-24V**  
12.1" TFT SVGA (800 x 600) Display



### FEATURES

- Bright, wide-viewing angles
- TFT 262,144 Color LCD
- User Replaceable Backlight (Lifetime 50,000h)
- Analog Resistive Touch Screen
- Analog Video or DVI Video Interfaces
- Serial or USB Touchscreen Interfaces
- On-Screen Display Menu (VGA mode only)
- VESA Mount Compatible
- Compact Body (58mm [2.28in.] Depth)
- NEMA #250 TYPE4x/12 Front Face
- UL & cUL Approvals (Indoor use only)
- Class I, Division 2 Hazardous Location Approval (Indoor use only)
- European CE Approval
- Panel Cut-out compatibility with Pro-face GP/GLC2500 and GP/GLC2600

### EXTERNAL DIMENSIONS



# FP2000 SERIES SPECIFICATIONS

## FUNCTIONAL SPECIFICATIONS

Model		FP2500-T42-24V	FP2600-T42-24V
Display	Type	10.4" TFT Color LCD	12.1" TFT Color LCD
	Colors	262,144 colors	
	Backlight	User replaceable CCFL (Service life: 50,000 hrs.)	
	Resolution	640 x 480 pixels	800 x 600 pixels
	Effective Display Area (mm)	211.2(W) x 158.4(H)	246.0(W) x 184.5(H)
	Brightness Control	Available only when using analog RGB connection	
Interfaces	Touch Panel	Resistive Film (analog)	
	VGA Video	Analog RGB	
	DVI Video	Digital Visual Interface	
	Serial Touchscreen	RS-232C	
	USB Touchscreen	USB 1.0 (Connector B type)	

## GENERAL SPECIFICATIONS

Electrical	Input Voltage	24VDC
	Rated Voltage Range	19.2DC to 28.8V
	Allowable Voltage Range	10 $\mu$ s or less
	Power Consumption	50W or less
	Voltage Endurance	1000VAC, 20mA for up to 1 minute (between charging and FG terminals)
	Insulation Resistance	10M ohm or higher at 500VDC (between charging and FG terminals)
Environmental	Operating Temperature	0°C to 50°C (panel interior and panel face)
	Storage Temperature	-10°C to +60°C
	Ambient Humidity	30%RH to 90%RH (non-condensing)
	Storage Humidity	30%RH to 90%RH (non-condensing)
	Vibration Resistance	10Hz to 25Hz 19.6m/s <sup>2</sup> X,Y,Z directions (30min.)
	Noise Immunity	Noise Voltage: 1000Vp-p Pulse Duration: 1 $\mu$ s Rise Time: 1ns
	Atmosphere	Free of corrosive gases
Structural	Grounding	Protective/Function grounding: D-Type grounding
	Ratings	Equivalent to IP65f / Nema #250 Type 4x/12 (front panel only)
	Cooling Method	Natural air circulation
	External Dimensions	W317mm [12.48in.] x H243mm [9.57in.] x D58mm [2.28in.]
	Weight	approx. 3.5kg (7.72lb)

## ORDERING INFORMATION

### BASE ORDER NUMBERS

### DESCRIPTIONS

**FP2500-T42-24V-VGA-SER**

10.4" Flat Panel Monitor, VGA Video and Serial Touchscreen Cables

**FP2600-T42-24V-VGA-SER**

12.1" Flat Panel Monitor, VGA Video and Serial Touchscreen Cables

### FP2500-T42-24V-

#### Video Connector & Cable

VGA VGA Video, 5M  
DVI DVI Video, 5M

#### T/S Connector & Cable

SER Serial T/S, 5M  
USB USB T/S, 5M

### FP2600-T42-24V-

#### Video Connections & Cables

-VGA VGA Video Connection & Cable, 5M  
-DVI DVI Video Connection & Cable, 5M

#### T/S Connections & Cables

-SER Serial T/S Connection & Cable, 5M  
-USB USB T/S Connection & Cable, 5M

### MONITOR ACCESSORIES

**FP61V-IS00-O**

Serial T/S Cable, 5M

**FP-CV01**

VGA Video Cable, 5M

**FP-DV01-50**

DVI Video Cable, 5M

**FP-US00**

USB T/S Cable, 5M

**PSL-DF00**

Cover Sheets (5 per pack)

Xycom Automation  
734-429-4971  
Fax: 734-429-1010  
<http://www.xycom.com>

Customer Support Hotline:  
734-944-0482



© 2006 Xycom Automation. Specifications may change without notice. Xycom Automation is a trademark of Xycom Automation. Other brand or product names are the property of their respective owners.



# California Proposition 65 Warning—Lead and Lead Compounds

## Advertencia de la Proposición 65 de California—Plomo y compuestos de plomo

### Avertissement concernant la Proposition 65 de Californie—Plomb et composés de plomb

**⚠ WARNING:** This product can expose you to chemicals including lead and lead compounds, which are known to the State of California to cause cancer and birth defects or other reproductive harm. For more information go to: [www.P65Warnings.ca.gov](http://www.P65Warnings.ca.gov).

**⚠ ADVERTENCIA:** Este producto puede exponerle a químicos incluyendo plomo y compuestos de plomo, que es (son) conocido(s) por el Estado de California como causante(s) de cáncer y defectos de nacimiento u otros daños reproductivos. Para mayor información, visite : [www.P65Warnings.ca.gov](http://www.P65Warnings.ca.gov).

**⚠ AVERTISSEMENT:** Ce produit peut vous exposer à des agents chimiques, y compris plomb et composés de plomb, identifiés par l'État de Californie comme pouvant causer le cancer et des malformations congénitales ou autres troubles de l'appareil reproducteur. Pour de plus amples informations, prière de consulter: [www.P65Warnings.ca.gov](http://www.P65Warnings.ca.gov).

All trademarks are the property of Schneider Electric SE, its subsidiaries, and affiliated companies.

**Schneider Electric USA, Inc.**  
800 Federal Street  
Andover, MA 01810 USA  
888-778-2733  
[www.schneider-electric.us](http://www.schneider-electric.us)

Todas las marcas comerciales son propiedad de Schneider Electric SE, sus filiales y compañías afiliadas.

Importado en México por:  
**Schneider Electric México, S.A. de C.V.**  
Av. Ejercito Nacional No. 904  
Col. Palmas, Polanco 11560 México, D.F.  
55-5804-5000  
[www.schneider-electric.com.mx](http://www.schneider-electric.com.mx)

Toutes les marques commerciales sont la propriété de Schneider Electric SE, ses filiales et compagnies affiliées.

**Schneider Electric Canada, Inc.**  
5985 McLaughlin Road  
Mississauga, ON L5R 1B8 Canada  
800-565-6699  
[www.schneider-electric.ca](http://www.schneider-electric.ca)