

Pro-face Operator Interface and Controller Products

Product Guide

The GP/GLC Series of HMI operator interfaces feature:

- A) Real-time monitoring of discrete and process automation system information
- B) Recipe/Batch Management
- C) Scripting to create custom applications
- D) Data Logging
- E) Alarm Management Active and Historical
- F) Data sharing and Web-enabled Capabilities
- G) Built-in Logic Controller for GLC units
- H) Built-in Ethernet for GP/GLC2000 Series

**From Simple HMI to Integrated Control
Complete Operator Interface Scalability**

XYCOMTM
a PRO-FACE America Company

This page left intentionally blank

Pro-Face Guide Index

<u>Table Of Contents</u>	<u>Page #</u>
Part Number Index	4
<u>ST40x 3.8" Series Units, Kits, PLC Cables</u>	
ST40x Series 3.8" Amber Operator Interface	5
ST40x Operator Interface Quick Start Kits	6
ST40x PLC Cables	6
<u>GP2000, FGW, GP270, GP477R and GP200H Handheld Operator Interfaces</u>	
Factory Gateway Multi-Protocol Serial to Ethernet	8
GP37W2/W3 Series 5.7" Blue Mode	9
GP2300/01 Series 5.7" Monochrome and Color STN, TFT Operator Interface.....	9
GP 2400/01 Series 7.4" Color TFT.....	10
GP477R Series 9" Electroluminescent Amber Operator Interface	10
GP2500/01 Series 10.4" Monochrome STN, TFT Operator Interface	11
GP2600/01 Series 12.1" TFT Operator Interface.....	11
GP2301H, GP2401H 5.7" and 6.5" Hand Held Operator Interface	12
GP2301H, GP2401H Hand Held Cables and Accessories	12
<u>GLC2000 Graphic Logic Controllers</u>	
GLC2300 Series 5.7" Monochrome and Color, TFT Graphic Logic Controller	14
GLC2400 Series 7.4" Color TFT Graphic Logic Controller	14
GLC2500 Series 10.4" Color TFT Graphic Logic Controller.....	15
GLC2600 Series 10.4" Color TFT Graphic Logic Controller.....	15
<u>LT/GLC150 Series Stand-Alone Graphic Logic Controllers</u>	
LT Type A1 and A2 (GLC150 –xxxx-XY32SK-24V, GLC150 –xxxx-XY32SC-24V)	17
LT Type B and Type C (GLC150 –BG41-FLEX-24V, GLC150 –BG41-RSFL-24V)	17
LT Type B+ (GLC150 –xxxx-XY32SF-24V)	18
LT Type D (GLC150 –BG41-DNM-24V).....	18
LT Type H1 and H2 Analog and Discrete I/O (GLC150 –xxxx-ADC/ADK-24V).....	19
LT Type H1 and H2 Temperature Controllers (GLC150 ADPC/ADPK, ADTC, ADTK).....	20
<u>Flex Network Modules, Communication Modules, and Video Mix</u>	
Flex Network Modules (FN-XXXX) For GLC2000 and select LT/GLC150 Series	21
Communication Modules for GP477R, GP2000, and GLC2000	22
GP2000-VM41 Video Mix Unit for GP2500T, GP2600T, GLC2500T, and GLC2600T	23

Pro-Face Guide Index

Table of Contents	Page #
<u>Pro-Face GP-PRO 03 and Pro-Designer Software</u>	
GP-PRO/PBIII C-Package03 Configuration Software.....	24
Pro-Server with Pro-Studio Data Collection Software.....	24
GP-Web Remote Access Internet Software	24
Pro-Designer Multi-Platform HMI Configuration Software.....	25
Pro-Designer Multi-Platform HMI Runtime License	25
3112T-PDWS Pro-Designer WorkStations	26
<u>QuickStart Kits FOR GP2000, GP37W2/W3, GLC2000, LT/GLC150</u>	
GP2000 Series and GP37W2/3 Series Quick Start Kits – Configure to order	27
GLC2000 Series and LT/GLC150 Series Quick Start Kits – Configure to order.....	28
<u>Pro-face Cables, Adapters and Cable Accessories</u>	
Programming Cables, Printer Cables, and Serial Port Isolators	29
Flex Network Cables and LT/GLC150 Cable Accessories.....	29
GPH70 Handheld Cables and Accessories	29
PLC Cables for GP2000, GLC2000, Factory Gateway and GP37W2/W3	30
<u>Pro-face HMI Accessories</u>	
HMI Mounting Accessories.....	33
Compact Flash Card and Accessories	33
Clear Protective Touch Screen Overlays.....	33
Power Supplies	33
Miscellaneous Accessories	33
Backlights for GP and GLC HMI units	34
Stainless Steel Bezels.....	34
Manuals	34
<u>Pro-face Drawings</u>	
Panel Cutout Dimensions for All HMI	35

Pro-face September 1, 2005 Product Guide
PART NUMBER INDEX

142055.....	29	GLC150-SC41-ADK-24V.....	19	GP2501-SC11.....	11	HMI-CAB-C82.....	30
142720.....	29	GLC150-SC41-ADPC-24V.....	20	GP2501-TC11.....	11	HMI-CAB-C83.....	30
142722.....	29	GLC150-SC41-ADPK-24V.....	20	GP2600-TC11.....	11	HMI-CAB-C83-20x.....	30
142723.....	29	GLC150-SC41-ADTK-24V.....	20	GP2600-TC41-24V.....	11	HMI-CAB-C84.....	30
3112T-PDWS.....	26	GLC150-SC41-XY32KF-24V.....	18	GP2601-TC11.....	11	HMI-CAB-C84-20X.....	30
510-1000-004.....	33	GLC150-SC41-XY32SK-24V.....	17	GP37W2-BG41-24V.....	9	HMI-CAB-C86.....	31
510-1000-041.....	33	GLC2300-FNCN01.....	29	GP37W2-DF00.....	33	HMI-CAB-C88.....	31
CA1-COSALL-21.....	22, 23	GLC2300-LG41-24V.....	14	GP37W3-BG41-24V.....	9	HMI-CAB-C90.....	30
CA1-DNSALL-21.....	22, 23	GLC2300-TC41-24V.....	14	GP410-IS00-O.....	30	HMI-CAB-C91.....	31
CA1-PFSALL-21.....	22, 23	GLC2400-TC41-24V.....	14	GP410-IS01-O.....	30	HMI-CAB-C92.....	32
CA1-STDLRG-01.....	31	GLC2500-TC41-200V.....	15	GP430-IP10-O.....	31	HMI-CAB-C93.....	30
CA1-WMALRG-01.....	31	GLC2500-TC41-24V.....	15	GP430-IP11-O.....	31	HMI-CAB-C94.....	32
CA2-DNMALL-41.....	22, 23	GLC2600-TC41-200V.....	15	GP470/477-COVER-10P.....	33	HMI-CAB-C99.....	29
CA2-ISOALL232-01.....	29	GLC2600-TC41-24V.....	15	GP470/477-DF10.....	33	HMI-CAB-ETH.....	29
CA2-ISOALL422-01.....	29	GP000-IS03-MS.....	31	GP477R-EG11.....	10	HMI-CAB-ST001.....	6
CA2-PFMALL-21.....	22, 23	GP000-IS11-O.....	32	GP477R-EG41-24VP.....	10	HMI-CAB-ST106.....	6
CA2-PFMALL-UTIL.....	22, 23	GP070-AT01.....	33	GP570/577-DF10-O.....	33	HMI-CAB-ST52.....	6
CA3-CBL232/5M-01.....	6	GP070-CL11.....	22	GP570-BL00-MS.....	34	HMI-CAB-ST52-30x.....	6
CA3-CBL422/5M-01.....	6	GP070-CN10-O.....	30	GP577RS-BL00-MS.....	34	HMI-CAB-ST52-50x.....	6
CA3-CBLA-01.....	6	GP070-DN41.....	22	GP577RT-BL00-MS.....	34	HMI-CAB-XY84.....	30
CA3-CBLFX/1M-01.....	6	GP070-IB41.....	22	GPH70-AP232-O.....	29	HMI-JBX-201.....	29
CA3-CBLFX/5M-01.....	6	GP070-MD11.....	31	GPH70-AP422-O.....	29	PS300-BU00.....	34
CA3-CBLQ-01.....	6	GP070-MDCB11.....	31	GPH70-C232-MS.....	29	PS300-DF00.....	33
CA3-CBLSYS-01.....	6	GP070-MPI-41.....	32	GPH70-C232-O.....	29	PS400-BU00-MS.....	34
CA3-CFCALL/256MB-01.....	31	GP070-PF11.....	22	GPH70-C422-O.....	29	PS400-DF00.....	33
CA3-CFCALL/512MB-01.....	31	GP077-CFAD10.....	31	GPH70-D232-MS.....	29	PS500S-BU00.....	34
CA3-CFCALL/64MB-01.....	31	GP077-CFFM10.....	31	GPH70-D422-MS.....	29	PS501S-BU00.....	34
CA3-MBPALL-41.....	22, 23	GP077-MLTE41.....	22	GPH70-DF10-O.....	33	PS600-BU00-MS.....	34
FGW-SE41-24V.....	8	GP077-SDAD10.....	33	GPL-AXCN01.....	29	PS-DCR01.....	25
FN-AD02AH41.....	21	GP2000-CBLFX/1M-01.....	31	GPM-AXCN01.....	29	PS-DWE01-10Pack.....	25
FN-AD04AH11.....	21	GP2000-CBLFX/5M-01.....	31	GPPRO-03-SW-SUITE.....	24	PS-DWE01-5Pack.....	25
FN-CABLE-2010-31-MS.....	29	GP2000H-AP232.....	12	GPPRO-CNT01W-P03.....	24	PS-DWE01-UPG.....	25
FN-CABLE-2050-31-MS.....	29	GP2000H-AP422.....	12	GPW-CB02.....	29	PS-DWE01-V42.....	25
FN-CABLE-2200-31-MS.....	29	GP2000H-AP70CB-D232-3M.....	12	GPW-CB03.....	29	PS-ECR01.....	25
FN-DA02AH41.....	21	GP2000H-AP70CB-D422-3M.....	12	GW-CJ01-CLTUL.....	24	PS-EPR01.....	25
FN-DA04AH11.....	21	GP2000H-C232-10M.....	12	GW-CJ01-V16.....	24	PSL-CONV00.....	23
FN-HC10SK41.....	21	GP2000H-C232-3M.....	12	HMI-BEZ-202.....	34	PSL-DF00.....	33
FN-IFCN01.....	29	GP2000H-C422-10M.....	12	HMI-BEZ-403.....	34	PSM-CONV00.....	22
FN-LD10CBL.....	21	GP2000H-C422-3M.....	12	HMI-BEZ-405.....	34	PSM-PRCB00.....	29
FN-PC10CB01.....	21	GP2000H-D232-10M.....	12	HMI-BEZ-406.....	34	PSW-ED01-V45.....	24
FN-PC10LD41.....	21	GP2000H-D232-3M.....	12	HMI-CAB-A02.....	29	PSW-GV01-V11.....	24
FN-PC10SK41.....	21	GP2000H-D422-10M.....	12	HMI-CAB-A02-25X.....	29	QPI-ABD-201.....	22, 23
FN-X16TS41.....	21	GP2000H-D422-3M.....	12	HMI-CAB-A02-50X.....	29	QPI-ABR-201.....	22, 23
FN-X32TS41.....	21	GP2000H-DF10.....	33	HMI-CAB-C100.....	32	QPI-MBP-XA1.....	22
FN-XY08TS41.....	21	GP2000H-EMGD11.....	12	HMI-CAB-C101.....	32	QPJ-ABD-201.....	22
FN-XY16SC41.....	21	GP2000H-STRAP11.....	12	HMI-CAB-C102.....	31	QPJ-ABR-201.....	22
FN-XY16SK41.....	21	GP2000-VM41.....	23	HMI-CAB-C106.....	30	QPJ-MBP-XA1.....	22
FN-XY32SKS41.....	21	GP2300-LG41-24V.....	9	HMI-CAB-C109.....	31	QS400-AG41-24V-CB02.....	6
FN-Y08RL41.....	21	GP2300-SC41-24V.....	9	HMI-CAB-C110.....	32	QS400-AG41-24V-CB03.....	6
FN-Y16SC41.....	21	GP2300-TC41-24V.....	9	HMI-CAB-C110-20X.....	32	QS401-AG41-24V-CB02.....	6
FN-Y16SK41.....	21	GP2301H-LG41-24V.....	12	HMI-CAB-C111.....	30	QS401-AG41-24V-CB03.....	6
GLC000-DIOCB11-MS.....	29	GP2301H-SC41-24V.....	12	HMI-CAB-C114.....	32	QS401-AG41-24V-CB03-ST106.....	6
GLC100-DIOCON01.....	29	GP2301-LG41-24V.....	9	HMI-CAB-C116.....	32	QS401-AG41-24V-CB03-ST52.....	6
GLC150-BG41-ADC-24V.....	19	GP2301-SC41-24V.....	9	HMI-CAB-C117A.....	30	QS402-AG41-24V-CB02.....	6
GLC150-BG41-ADK-24V.....	19	GP2301-TC41-24V.....	9	HMI-CAB-C119.....	30	QS402-AG41-24V-CB03.....	6
GLC150-BG41-ADPC-24V.....	20	GP230-IS11-O.....	30	HMI-CAB-C120.....	30	QS403-AG41-24V-CB03-ETH.....	6
GLC150-BG41-ADPK-24V.....	20	GP230-IS12-O.....	30	HMI-CAB-C232.....	30	QS-GPxxx-xxx.....	27
GLC150-BG41-ADTC-24V.....	20	GP2400-TC41-24V.....	10	HMI-CAB-C422.....	30	QSGLCxxx-xxx.....	28
GLC150-BG41-ADTK-24V.....	20	GP2401H-TC41-24V.....	12	HMI-CAB-C52.....	30, 32	ST400-AG41-24V.....	5
GLC150-BG41-DNM-24V.....	18	GP2401-TC41-24V.....	10	HMI-CAB-C52-30X.....	30, 32	ST400-DF01.....	33
GLC150-BG41-FLEX-24V.....	17	GP2500-LG41-24V.....	11	HMI-CAB-C52-50X.....	30, 32	ST401-AG41-12V-XY1.....	5
GLC150-BG41-RSFL-24V.....	17	GP2500-SC41-24V.....	11	HMI-CAB-C53.....	30, 31, 32	ST401-AG41-24V.....	5
GLC150-BG41-XY32KF-24V.....	18	GP2500-TC11.....	11	HMI-CAB-C58.....	31	ST402-AG41-24V.....	5
GLC150-BG41-XY32SC-24V.....	17	GP2500-TC41-24V.....	11	HMI-CAB-C67.....	31	ST403-AG41-24V.....	5
GLC150-BG41-XY32SK-24V.....	17	GP2501-LG41-24V.....	11	HMI-CAB-C76.....	32		

ST SERIES

Powerful Data Sharing HMI Graphical Touch Screens

- Amber Touch Screens with Six configurable functions buttons
- Lowest Cost HMIs
- Select unit based on your Serial or Ethernet communication requirements

3.8" LOW COST LED BACKLIT GRAPHIC TOUCH SCREEN

ST40x Series Amber LCD UL Listed Class I Div 2

Select unit based on RS-422/485, RS-232 or Siemens MPI 485 Serial Requirements



Selection Guide	ST400	ST401	ST402
3.8" 320 x 240 Resolution	√	√	√
Dual Color LED Backlit Amber/Red	No	No	No
RS-422/RS-485 Com Port 9 pin D-sub	√		
RS-232 Port 9 pin D-sub		√	
Siemens MPI 485 Interface Only			√
Secondary Port for scripting or Bar Code Reader input (RS-422 type Serial Port, not for PLC interfacing)			√
Supports Communication Modules	No	No	No
Compact Flash Socket	No	No	No
Application Memory	640KB	640KB	640KB
Certifications : CE, UL/cUL CL I Div 2	√	√	√
Software Compatibility	GPPPro-03	GPPPro-03	GPPPro-03

Order Number	Description
ST400-AG41-24V	3.8" Amber, 640KB Mem. 1 RS-422/485 Serial Port, 24VDC, UL, CE
ST401-AG41-24V	3.8" Amber, 640KB Mem. 1 RS-232 Serial Port, 24VDC, UL, CE
ST402-AG41-24V	3.8" Amber, 640KB Mem. 1 Siemens MPI485 Port, Bar code port, 24V, UL, CE

3.8" ETHERNET AND RS-232 12V POWERED GRAPHIC TOUCH SCREEN

ST403 Ethernet and RS-232/RS-422 Serial communications

ST401 RS-232 12V Powered



Selection Guide	ST401 12V-XY1	ST403 Ethernet
3.8" 320 x 240 Resolution	√	√
Dual Color LED Backlit Amber/Red		√
Ethernet 10-BaseT		√
RS-232 Port 9 pin D-sub Only	√	
RS-232/RS-485 Secondary Port 9 pin D-sub Software configurable for PLC interfacing		√
Supports Communication Modules	No	No
Compact Flash Socket	No	No
Certifications : CE, UL/cUL CL I Div 2	√	√
Software Compatibility	Pro-Designer V4.2.10	GPPPro-03 Pro-Designer V4.2.10

Order Number	Description
ST401-AG41-12V-XY1	3.8" Amber, Pro-Designer Only , 1 RS-232 Port, 12VDC
ST403-AG41-24V	3.8" Dual Color Amber/Red LED, Ethernet, RS-232/422 Port, 24V, UL, CE

ST SERIES

Powerful Data Sharing HMI Graphical Touch Screens

- Amber Touch Screens with Six configurable functions buttons
- Lowest Cost HMI's
- Select unit based on your Serial or Ethernet communication requirements

ST40x SERIES QUICK START KITS

ST40x Quick Start Kits



Includes:

- ST40x unit
- GP-Pro 03 HMI Development Software (Latest Release)
- GPW-CB02 RS-232 or GPW-CB03 USB Download Cable
- Generic or PLC specific communication Cable

ST40x QUICK START KITS

Order Number	Description
QS400-AG41-24V-CB02	ST400 w/ GP PRO-03, RS-232 Download Cable and HMI-CAB-ST001
QS400-AG41-24V-CB03	ST400 w/ GP PRO-03, USB Download Cable and HMI-CAB-ST001
QS401-AG41-24V-CB02	ST401 w/ GP PRO-03, RS-232 Download Cable and HMI-CAB-ST001
QS401-AG41-24V-CB03	ST401 w/ GP PRO-03, USB Download Cable and HMI-CAB-ST001
QS401-AG41-24V-CB03-ST106	ST401 w/ GP PRO-03, USB Cable and HMI-CAB-ST106
QS401-AG41-24V-CB03-ST52	ST401 w/ GP PRO-03, USB Cable and HMI-CAB-ST52
QS402-AG41-24V-CB02	ST402 w/ GP PRO-03, RS-232 Download Cable and HMI-CAB-ST001
QS402-AG41-24V-CB03	ST402 w/ GP PRO-03, USB Download Cable and HMI-CAB-ST001
QS403-AG41-24V-CB03-ETH	ST403 w/ GP PRO-03, CB03 USB Download Cable and HMI-CAB-ETH

ST40x PLC CABLES

Order Number	Description
HMI-CAB-ST001	Generic PLC communication cable: Connects to ST40x Serial Port and has 9 conductor open ended wires for connecting to 3 rd party screw terminal devices.
HMI-CAB-ST52	Cable ST401 to AB SLC503/504, Siemens S7-300 MPI, 10 feet
HMI-CAB-ST52-30x	Cable ST401 to AB SLC503/504, Siemens S7-300 MPI, 30 feet
HMI-CAB-ST52-50x	Cable ST401 to AB SLC503/504, Siemens S7-300 MPI, 50 feet
HMI-CAB-ST106	Micrologix Cable ST401, ST403 to Rockwell Micrologix PLC
CA3-CBLSYS-01	RS-232C cable, 5M, connects to ST401 to Omron SYSMAC
CA3-CBL232/5M-01	RS-232C cable, 5M, connects to ST401, other end is 25pin D-sub male
CA3-CBL422/5M-01	RS-422 cable, 5M, connects ST400/402, other end is 6 wire spade lug
CA3-CBLFX/1M-01	mitsubishi FX Series cable, 1M, connects ST400 to FX via 8 pin mini-DIN
CA3-CBLFX/5M-01	mitsubishi FX Series cable, 5M, connects ST400 to FX via 8 pin mini-DIN
CA3-CBLA-01	mitsubishi A Cable, RS-422, 5M, connects ST400 to MITSUBISHI A PLC
CA3-CBLQ-01	mitsubishi Q Connection RS-232C cable, 5M, use with ST401



GP2000 Series Full Featured HMI Graphic Touch Screens

- **Monochrome, STN, TFT Operator Interfaces**
- **Ethernet**
- **Siemens MPI Support**
- **RS-232/RS-422 Ports**
- **Compact Flash**
- **Supports Optional Communication Modules**
- **Compatible with GP-PRO C-Package03 Software**
- **Compatible with Pro-Designer Software**

NOTE: This section includes GP477R models which are not compatible with Pro-Designer software.



Powerful Data Sharing HMI Graphical Touch Screens

- Monochrome, Amber, STN and TFT Full Featured HMI Solutions
- Available in 5.7", 7.4", 9.1", 10.4" and 12.1" Screen sizes
- Largest Selection of Protocols available!

FACTORY GATEWAY HMI AND SERIAL TO ETHERNET PROTOCOL CONVERTER

- **PLC To PLC Protocol Converter (Rockwell PLC to Omron PLC for example)**
- **Supports Peer to Peer Communications via one Gateway to another**
- **Ideal for factory retrofits (interfacing 3rd party serial devices to Ethernet communication networks)**



Selection Guide	FGW
Create HMI screens and view remotely via Pro-Server and GP-Web Software	√
Convert One vendor PLC protocol to another vendors	√
Peer to Peer Communication via FGW to another FGW	√
Ethernet 10-BaseT	√
One RS-232/RS-422 Com Port 25pin D-sub	√
Application Memory	4MB
Certifications : CE, UL/cUL	√
Software Compatibility	GPro-03, Pro-Designer

Order Number	Description
FGW-SE41-24V	Ethernet w/ RS-232/RS-422 Serial Port, 4MB mem, 24VDC, UL/cUL, CE

UL certifications are general safety certifications for non-hazardous locations

[See Panel Cutout Dimensions Near back of Book](#)



Powerful Data Sharing HMI Graphical Touch Screens

- Monochrome, Amber, STN and TFT Full Featured HMI Solutions
- Available in 5.7", 7.4", 9.1", 10.4" and 12.1" Screen sizes
- Largest Selection of Protocols available!

5.7" LOW COST GRAPHIC TOUCH SCREEN

GP37W2/W3 Series 5.7" Blue/White LCD (Serial Protocols Only)

Low Cost Basic Feature Serial Protocol HMIs



Selection Guide	GP37W2	GP37W3
5.7" 320 x 240 Resolution	√	√
Ethernet 10-BaseT	No	No
RS-232/RS-422 Com Port 25pin D-sub	√	√
Secondary RS-232 Port 9 pin D-sub	No	No
Supports Communication Modules	No	No
Compact Flash Socket	No	No
Application Memory	1MB	4MB
Certifications : CE, UL/cUL	√	√
Software Compatibility	GPro-03	Pro-Designer

Order Number	Description
--------------	-------------

GP37W2-BG41-24V	6" Blue/White LCD, 1 Serial port, 1MB mem 24VDC, UL, CE
-----------------	---

GP37W3-BG41-24V	6" Blue/White LCD, 1 Serial port, 4MB memory 24VDC, UL, CE
-----------------	--

UL certifications are general safety certifications for non-hazardous locations

5.7" GRAPHIC TOUCH SCREEN

GP2300/01 Series 5.7" Monochrome and Color STN, TFT LCD

UL Recognized Class I Div 2



Selection Guide	GP2300 Models	GP2301 Models
5.7" 320 x 240 Resolution	√	√
Ethernet 10-BaseT	√	
RS-232/RS-422 Com Port 25pin D-sub	√	√
Secondary RS-232 Port 9 pin D-sub	√	
Supports Communication Modules	√	√
Compact Flash Socket	√	√
Application Memory ¹	2MB	1MB
Certifications : CE, UL/cUL CL I Div 2	√	√
Software Compatibility	GPro-03 Pro-Designer	GPro-03 Pro-Designer

Order Number	Description
--------------	-------------

GP2300-TC41-24V	5.7" TFT Color, Ethernet, CF, 2 Serial, 2MB mem, 24VDC, UL CL I Div 2, CE
-----------------	---

GP2300-SC41-24V	5.7" STN Color, Ethernet, CF, 2 Serial, 2MB mem, 24VDC, UL CL I Div 2, CE
-----------------	---

GP2300-LG41-24V	5.7" Mono, Ethernet, CF, 2 Serial, 2MB memory, 24VDC, UL CL I Div 2, CE
-----------------	---

GP2301-TC41-24V	5.7" TFT Color, CF, 1 Serial, 1MB memory, 24VDC, UL CL I Div 2, CE
-----------------	--

GP2301-SC41-24V	5.7" STN Color, CF, 1 serial, 1MB memory, 24VDC, UL CL I Div 2, CE
-----------------	--

GP2301-LG41-24V	5.7" Monochrome, CF, 1 Serial, 1MB memory, 24VDC, UL CL I Div 2, CE
-----------------	---

¹ Memory size refers to GP-PRO 03 Applications.

See Panel Cutout Dimensions Near back of Book



Powerful Data Sharing HMI Graphical Touch Screens

- Monochrome, Amber, STN and TFT Full Featured HMI Solutions
- Available in 5.7", 7.4", 9.1", 10.4" and 12.1" Screen sizes
- Largest Selection of Protocols available

7.4" GRAPHIC TOUCH SCREENS

GP2400/01 Series 7.4" Color TFT LCD Ethernet UL Listed Class I Div 2



Selection Guide	GP2400 Models	GP2401 Models
7.4" TFT Color 640 x 480 Resolution	√	√
Ethernet 10-BaseT	√	
RS-232/RS-422 Com Port 25pin D-sub	√	√
Secondary RS-232 Port 9 pin D-sub	√	
Supports Communication Modules	√	√
Compact Flash Socket	√	√
Application Memory ¹	4MB	2MB
Sound Output	√	
Certifications : CE, UL/cUL CL I Div 2	√	√
Software Compatibility	GPPro-03 Pro-Designer	GPPro-03 Pro-Designer

Order Number	Description
--------------	-------------

GP2400-TC41-24V	7.4" TFT Color, Ethernet, CF, 2 Serial, 4MB mem, 24VDC, UL CL I Div 2, CE
------------------------	---

GP2401-TC41-24V	7.4" TFT Color, 1 serial, CF, 2MB mem, 24VDC, UL CL I Div 2, CE
------------------------	---

¹ Memorysize refers to GP-PRO 03 Applications.

9.1" GRAPHIC TOUCH SCREENS

GP477R Series 9.1" Electroluminescent Amber LCD Serial Only 24V Unit is UL Listed Class I Div 2



Selection Guide	GP477R 24VDC	GP477R 120VAC
9.1" Amber Color 640 x 400 Resolution	√	√
Ethernet 10-BaseT	No	No
RS-232/RS-422 Com Port 25pin D-sub	√	√
Secondary RS-232 Port 9 pin D-sub	No	No
Supports Communication Modules	√	√
Compact Flash Socket	No	No
Application Memory	2MB	2MB
Sound Output	No	No
Certifications : CE, UL/cUL CL I Div 2	√	No
Software Compatibility	GPPro-03	GPPro-03

Order Number	Description
--------------	-------------

GP477R-EG41-24VP	9.1" Amber EL, 1 Serial port, 2MB memory, 24VDC, UL CL I Div 2, CE
-------------------------	--

GP477R-EG11	9.1" Amber EL, 1 Serial port, 2MB memory, 120VAC
--------------------	--

See Panel Cutout Dimensions Near back of Book



Powerful Data Sharing HMI Graphical Touch Screens

- Monochrome, Amber, STN and TFT Full Featured HMI Solutions
- Available in 5.7", 7.4", 9.1", 10.4" and 12.1" Screen sizes
- Largest Selection of Protocols available

10.4" GRAPHIC TOUCH SCREENS

GP2500/01 Series 10.4" Monochrome /Color STN, TFT LCD UL Listed Class I Div 2



Selection Guide	GP2500 Models	GP2501 Models
10.4" 640 x 480 Resolution	√	√
Ethernet 10-BaseT	√	
RS-232/RS-422 Com Port 25pin D-sub	√	√
Secondary RS-232 Port 9 pin D-sub	√	
Supports Communication Modules	√	√
Compact Flash Socket	√	√
Application Memory ¹	4MB	2MB
Sound Output	√	
Optional Video Support	√	
Certifications : CE, UL/cUL CL I Div 2	√	√
Software Compatibility	GPPro-03 Pro-Designer	GPPro-03 Pro-Designer

Order Number	Description
--------------	-------------

GP2500-TC41-24V	10.4" TFT Color, Ethernet, CF, 2 Serial, 4MB mem, 24VDC, UL CL I Div 2, CE
GP2500-TC11	10.4" TFT Color, Ethernet, CF, 2 Serial, 4MB mem, 120VAC UL CL I Div 2, CE
GP2500-SC41-24V	10.4" STN Color, Ethernet, CF, 2 Serial, 4MB mem, 24VDC UL CL I Div 2, CE
GP2500-LG41-24V	10.4" Mono, Ethernet, CF, 2 Serial, 4MB mem, 24VDC, UL CL I Div 2, CE
GP2501-TC11	10.4" TFT Color, 1 Serial, CF, 2MB mem, 120VAC, UL CL I Div 2, CE
GP2501-SC11	10.4" STN Color, 1 Serial, CF, 2MB mem, 120VAC, UL CL I Div 2, CE
GP2501-LG41-24V	10.4" Mono, 1 Serial, CF, 2MB mem, 24VDC, UL Class I Div 2, CE

12.1" GRAPHIC TOUCH SCREENS

GP2600/01 Series 12.1" Color TFT LCD Units UL Listed Class I Div 2



Selection Guide	GP2600 Models	GP2601 Models
12.1" TFT 800 x 600 Resolution Color	√	√
Ethernet 10-BaseT	√	
RS-232/RS-422 Com Port 25pin D-sub	√	√
Secondary RS-232 Port 9 pin D-sub	√	
Supports Communication Modules	√	√
Compact Flash Socket	√	√
Application Memory ¹	4MB	4MB
Sound Output	√	
Optional Video Support	√	
Certifications : CE, UL/cUL CL I Div 2	√	√
Software Compatibility	GPPro-03 Pro-Designer	GPPro-03 Pro-Designer

Order Number	Description
--------------	-------------

GP2600-TC41-24V	12.1" TFT, 2 serial, Ethernet, CF, 4MB mem, 24VDC, UL CL I Div 2, CE
GP2600-TC11	12.1" TFT, 2 serial, Ethernet, CF, 4MB mem, 120VAC, UL CL I Div 2, CE
GP2601-TC11	12.1" TFT, 1 serial, CF, 4MB mem, 120VAC, UL CL I Div 2, CE

¹ Memory size refers to GP-PRO 03 Applications.

[See Panel Cutout Dimensions Near back of Book](#)



Powerful Data Sharing HMI Graphical Touch Screens

- Monochrome, Amber, STN and TFT Full Featured HMI Solutions
- Available in 5.7", 7.4", 9.1", 10.4" and 12.1" Screen sizes
- Largest Selection of Protocols available

5.7" AND 6.5" HANDHELD GRAPHIC TOUCH SCREEN

GP2301H and GP2401H Monochrome and STN, TFT Color LCD



GP2401H TFT



GP2301H Mono or STN

Selection Guide	GP2301H Models	GP2401H Models
5.7" 320 x 240 Resolution	√	
6.5" 640 x 480 Resolution		√
Ethernet 10-BaseT	No	No
RS-232/RS-422 Com Port	√	√
3-position enable switch & vibration Alert	√	√
Two Open Collector Discrete Output	√	√
Two normally closed one normal open Emergency Shutdown Switch Output	√	√
One Buzzer Output	√	√
Compact Flash Socket	√	√
Application Memory	1MB	2MB
Certifications : CE, UL/cUL Recognized	√	√
Software Compatibility	GPro-03 Pro-Designer	GPro-03 Pro-Designer

Order Number	Description
GP2301H-LG41-24V	5.7" Mono LCD, CF, 1MB Mem, 320x240 res, 24VDC, UL, CE
GP2301H-SC41-24V	5.7" STN Color LCD CF, 1MB Mem, 320x240 res., 24VDC, UL, CE
GP2401H-TC41-24V	6.5" TFT Color LCD, CF, 2MB Mem, 640x480 res., 24VDC, UL, CE

GP2000H HANDHELD CABLES AND ACCESSORIES

Order Number	Description
GP2000H-EMGD11	Replacement emergency switch guard for GP2000H
GP2000H-STRAP11	Neck Strap for GP2000H
GP2000H-C232-3M	RS-232 cable, 3m, connects to handheld, other end is open wires
GP2000H-C232-10M	RS-232 cable, 10m, connects to handheld, other end is open wires
GP2000H-D232-3M	RS-232 cable, 3m, D-Sub connector, connects handheld to GP2000H-AP232
GP2000H-D232-10M	RS-232 cable, 10m, D-Sub connector, connects handheld to GP2000H-AP232
GP2000H-AP232	RS-232 Breakout adaptor for use GP2000H –D232-xx cables
GP2000H-C422-3M	RS-422 cable, 10m, connects to handheld, other end is open wires
GP2000H-C422-10M	RS-422 cable, 10m, connects to handheld, other end is open wires
GP2000H-D422-3M	RS-422 cable, 3m, D-Sub connector, connects handheld to GP2000H-AP232
GP2000H-D422-10M	RS-422 cable, 10m, D-Sub connector, connects handheld to GP2000H-AP232
GP2000H-AP422	RS-422 Breakout adaptor for use GP2000H –D422-xx cables
GP2000H-AP70CB-D232-3M	RS-232 cable, 3m, connects GP2000H to GPH70 AP232-O Adapter
GP2000H-AP70CB-D422-3M	RS-422 cable, 3m, connects GP2000H to GPH70 AP232-O Adapter



**GLC2000 Series
Full Featured HMI
Graphic Logic Controllers**

- **5.7, 7.4, 10.4, 12.1 TFT Touch Screens**
- **Ethernet**
- **Siemens MPI Support**
- **RS-232/RS-422/RS485 Ports**
- **Compact Flash**
- **Distributed I/O modules Support**
- **Compatible with GP-PRO 03 Software**



GLC2000 Series High Performance Graphic Logic Controllers

- All-In-One Box Full Featured HMI/PLC Solution
- Ideal for Distributed I/O Monitoring and Control Applications
- Combine with FN I/O modules to fit application requirements

5.7" GRAPHIC LOGIC CONTROLLER (Distributed I/O)

GLC2300 Series 5.7" Monochrome/TFT (Use with FN-xxx I/O Modules)

Built-in Logic Controller, Ethernet, UL Recognized Class I Div 2



Selection Guide	GLC2300 Models
5.7" 320 x 240 Resolution	√
Ethernet 10-BaseT	√
RS-232/RS-422 Com Port 25pin D-sub	√
Secondary RS-232 Port 9 pin D-sub	√
Supports Communication Modules	√
Compact Flash Socket	√
Application Memory	2MB
Support Flex Network Modules FN-xxx	√
Certifications : CE, UL/cUL CL I Div 2	√
Software Compatibility	GPPro-03

Order Number	Description
--------------	-------------

GLC2300-TC41-24V	5.7" TFT Color, Integrated Logic Control, Ethernet, CF, 2 Serial, 24VDC, UL, CE
------------------	---

GLC2300-LG41-24V	5.7" Mono, Integrated Logic Control, Ethernet, CF, 2 Serial, 24VDC, UL, CE
------------------	--

7.4" GRAPHIC LOGIC CONTROLLER (Distributed I/O)

GLC2400 Series 7.4" Color TFT (Use with FN-xxx I/O Modules)

Built-in Logic Controller, Ethernet, UL Listed Class I Div 2



Selection Guide	GLC2400 Models
7.4" TFT 256 Color 640 x 480 Resolution	√
Ethernet 10-BaseT	√
RS-232/RS-422 Com Port 25pin D-sub	√
Secondary RS-232 Port 9 pin D-sub	√
Supports Communication Modules	√
Compact Flash Socket	√
Application Memory	4MB
Sound Output	√
Support Flex Network Modules FN-xxx	√
Certifications : CE, UL/cUL CL I Div 2	√
Software Compatibility	GPPro-03

Order Number	Description
--------------	-------------

GLC2400-TC41-24V	7.4" TFT Color, Integrated Logic Control, Ethernet, CF, 2 Serial, 24VDC, UL, CE
------------------	---

See Panel Cutout Dimensions Near back of Book



GLC2000 Series High Performance Graphic Logic Controllers

- All-In-One Box Full Featured HMI/PLC Solution
- Ideal for Distributed I/O Monitoring and Control Applications
- Combine with FN I/O modules to fit application requirements

10.4" GRAPHIC LOGIC CONTROLLER (Distributed I/O)

GLC2500 Series 10.4" Color TFT (Use with FN-xxx I/O Modules) Built-in Logic Controller, Ethernet, UL Class I Div 2



Selection Guide	GLC2500 24VDC	GLC2500 120VAC
10.4" 640 x 480 Resolution	√	√
Ethernet 10-BaseT	√	√
RS-232/RS-422 Com Port 25pin D-sub	√	√
Secondary RS-232 Port 9 pin D-sub	√	√
Supports Communication Modules	√	√
Compact Flash Socket	√	√
Application Memory	4MB	4MB
Support Flex Network Modules FN-xxx	√	√
Sound Output	√	√
Optional Video Support	√	√
Certifications : CE, UL/cUL CL I Div 2	UL Listed	UL Recognized
Software Compatibility	GPro-03	GPro-03

Order Number	Description
GLC2500-TC41-24V	10.4" TFT Color, Integrated Logic Control, Ethernet, CF, 2 Serial, 24VDC, UL
GLC2500-TC41-200V	10.4" TFT Color, Integrated Logic Control, Ethernet, CF, 2 Serial, 120VAC UL

12.1" GRAPHIC LOGIC CONTROLLER (Distributed I/O)

GLC2600 Series 12.1" Color TFT (Use with FN-xxx I/O Modules) Built-in Logic Controller, Ethernet, UL Class I Div 2



Selection Guide	GLC2600 24VDC	GLC2600 120VAC
12.1" TFT 800 x 600 Resolution Color	√	√
Ethernet 10-BaseT	√	√
RS-232/RS-422 Com Port 25pin D-sub	√	√
Secondary RS-232 Port 9 pin D-sub	√	√
Supports Communication Modules	√	√
Compact Flash Socket	√	√
Application Memory	4MB	4MB
Support Flex Network Modules FN-xxx	√	√
Sound Output	√	√
Optional Video Support	√	√
Certifications : CE, UL/cUL CL I Div 2	UL Listed	UL Recognized
Software Compatibility	GPro-03	GPro-03

Order Number	Description
GLC2600-TC41-24V	12.1" TFT Color, Integrated Logic Control, Ethernet, CF, 2 Serial, 24VDC, UL
GLC2600-TC41-200V	12.1" TFT Color, Integrated Logic Control, Ethernet, CF, 2 Serial, 120VAC UL

See Panel Cutout Dimensions Near Back of Book



GLC150 Series Stand-Alone HMI Graphic Logic Controllers

LT Series(GLC150) Product Summary:

These units are intended for low cost stand-alone HMI Controller applications.

Some models feature a Flex Network interface, which support the various FN-xxxx distributed analog and discrete I/O modules. Combine GLC150 units supporting a Flex Network interface along with any combination of the FN-xxxx modules to match the I/O requirements of your application.

The GLC150 units are well suited to simplify a control panel design while maintaining system flexibility. The majority of these units include 16 discrete inputs and 16 discrete outputs. Various models as shown in the table below are design to match OEM machine requirements with emphasis on reducing wiring and installation time. Significant savings is achieved with the GLC150 units due to integrating the graphic touch screen, built-in I/O, and logic control all in one unit.

These units are not recommended for applications with data collection or data logging requirements.

General Overview



	Type A	Type B	Type B+	Type C	Type D	Type H
Serial (232/422)				✓		
DC24V 16In/16Out	✓		✓			✓
Flex Network Interface		✓	✓	✓		
Counter/Pulse Output						✓
Analog (AD/DA)						✓
Thermocouple Input						✓
Pt100 Input (RTD)						✓
DeviceNet Master					✓	



GLC150 Series 5.7" Low Cost Graphic Logic Controllers

- 5.7" Blue/White displays and STN Color displays
- All-In-One Box HMI/PLC Solution, Ideal for small OEM machines
- Various Models for Integrated and Distributed I/O Applications
- Select Model based on I/O requirements and communication requirements

5.7" LT Type A1 & A2 INTEGRATED DISCRETE I/O GRAPHIC LOGIC CONTROLLER

GLC150 Series 5.7" Blue/White and STN Color

LT Type A1 and A2 Integrated Discrete I/O only UL Listed Class I Div 2



Selection Guide	-XY32SK- Models	-XY32SC- Models
5.7" 320 x 240 Resolution	√	√
16 24V Rated Discrete Inputs	√	√
16 24V Rated Discrete Outputs	√ (Sink)	√ (Source)
Communication ports: Download/Barcode input	via Tool Port Only	via Tool Port Only
Support Flex Network Modules FN-xxx	No	No
Supports Communication Modules	No	No
Compact Flash Socket	No	No
Application Memory	1MB	1MB
Certifications : CE, UL/cUL CL I Div 2	√	√
Software Compatibility	GPro-03	GPro-03

Order Number	Description
GLC150-BG41-XY32SK-24V	6" Blue/White, Type A1, 16 in, 16 out (sink), 24VDC, UL, CE
GLC150-BG41-XY32SC-24V	6" Blue/White, Type A2, 16 in, 16 out (source), 24VDC, UL, CE
GLC150-SC41-XY32SK-24V	6" STN Color, Type A1, 16 in, 16 out (sink), 24VDC, UL, CE

5.7" LT TYPE B & C DISTRIBUTED I/O GRAPHIC LOGIC CONTROLLER

GLC150 Series 5.7" Blue/White LCD UL Listed Class I Div 2

LT Type B Distributed I/O (use with FN-XXX modules)

LT Type C Distributed I/O (use with FN-XXX modules) plus RS-232/RS-422 Serial



Selection Guide	-FLEX- Models	-RSFL- Models
5.7" 320 x 240 Resolution	√	√
Discrete Inputs/Outputs	None	None
RS-232/RS-422 Com Port 25pin D-sub	No	Yes
Communication Ports: Download/Barcode input	via Tool Port Only	via Tool Port Only
Support Flex Network Modules FN-xxx	Yes	Yes
Supports Communication Modules	No	No
Compact Flash Socket	No	No
Application Memory	1MB	1MB
Certifications : CE, UL/cUL CL I Div 2	√	√
Software Compatibility	GPro-03	GPro-03

Order Number	Description
GLC150-BG41-FLEX-24V	6" Blue/White, Type B, FN port, 24VDC, UL, CE
GLC150-BG41-RSFL-24V	6" Blue/White, Type C, FN port, RS-232/422, 24VDC, UL, CE



GLC150 Series 5.7" Low Cost Graphic Logic Controllers

- 5.7" Blue/White displays and STN Color displays
- All-In-One Box HMI/PLC Solution, Ideal for small OEM machines
- Various Models for Integrated and Distributed I/O Applications
- Select Model based on I/O requirements and communication requirements

5.7" LT TYPE B+ GRAPHIC LOGIC CONTROLLER (Integrated and Distributed I/O)

GLC150 Series 5.7" Blue/White and STN Color UL Listed Class I Div 2
Type B+ Integrated Discrete I/O and Distributed I/O (use with FN-XXX modules)



Selection Guide	-XY32KF- Models
5.7" 320 x 240 Resolution	√
16 24V Rated Discrete Inputs	√
16 24V Rated Discrete Outputs (Sink)	√
Communication Ports: Download/Barcode input	via Tool Port Only
Support Flex Network Modules FN-xxx	Yes
Supports Communication Modules	No
Compact Flash Socket	No
Application Memory	1MB
Certifications : CE, UL/cUL CL I Div 2	√
Software Compatibility	GPPro-03

Order Number	Description
GLC150-BG41-XY32KF-24V	6" Blue/White, Type B+, FN port, 32DIO (sink), 24VDC, UL, CE
GLC150-SC41-XY32KF-24V	6" STN Color, Type B+, FN port, 32DIO (sink), 24VDC, UL, CE

5.7" LT TYPE D DeviceNet™ MASTER GRAPHIC LOGIC CONTROLLER

GLC150 Series 5.7" Blue/White CE, UL
Type D Distributed Discrete I/O via DeviceNet



Selection Guide	-DNM- Models
5.7" 320 x 240 Resolution	√
Discrete Inputs	None
Discrete Outputs	None
Communication Ports: Download/Barcode input	via Tool Port Only
Support Flex Network Modules FN-xxx	No
Supports Communication Modules	No
Compact Flash Socket	No
Application Memory	1MB
Certifications : CE, UL	√
Software Compatibility	GPPro-03

Order Number	Description
GLC150-BG41-DNM-24V	6" Blue/White, Type D, DeviceNet, 32 DIO (sink), 24VDC



GLC150 Series 5.7" Low Cost Graphic Logic Controllers

- 5.7" Blue/White displays and STN Color displays
- All-In-One Box HMI/PLC Solution, Ideal for small OEM machines
- Various Models for Integrated and Distributed I/O Applications
- Select Model based on I/O requirements and communication requirements

5.7" LT TYPE H1 & H2 ANALOG & DISCRETE I/O GRAPHIC LOGIC CONTROLLER

GLC150 Series 5.7" Blue/White and STN Color UL Listed Class I Div 2

Type H1 and H2 Integrated Analog/Discrete I/O



Selection Guide	Type H1 ADK Models	Type H2 ADC Models
5.7" 320 x 240 Resolution	√	√
16 Discrete Inputs Supports up to four 10Kpps inputs	√	√
16 Discrete Outputs, Supports up to four 5Khz pulse or 2.5KHz PWM outputs	√ (Sink)	√ (Source)
Two Analog Inputs and One Analog Output 0-20mA / 0-10VDC configurable	√	√
Communication Ports: Download/Barcode input	via Tool Port Only	via Tool Port Only
Support Flex Network Modules FN-xxx	No	No
Compact Flash Socket	No	No
Application Memory	1MB	1MB
Certifications : CE, UL/cUL CL I Div 2	√	√
Software Compatibility	GPPro-03	GPPro-03

Order Number	Description
GLC150-BG41-ADK-24V	6" Blue/White, Type H2, Ain/out, 32DIO (source), 24VDC
GLC150-BG41-ADK-24V	6" Blue/White, Type H1, Ain/out, 32DIO (sink), 24VDC
GLC150-SC41-ADK-24V	6" STN 64 Color, Type H1, Ain/out, 32DIO (sink), 24VDC



GLC150 Series 5.7" Low Cost Graphic Logic Controllers

- 5.7" Blue/White displays and STN Color displays
- All-In-One Box HMI/PLC Solution, Ideal for small OEM machines
- Various Models for Integrated and Distributed I/O Applications
- Select Model based on I/O requirements and communication requirements

5.7" LT TYPE H1 & H2 RTD TEMPERATURE GRAPHIC LOGIC CONTROLLER

GLC150 Series 5.7" Blue/White and STN Color UL Listed Class I Div 2

Type H1 and H2 Integrated Analog/Discrete/RTD I/O



Selection Guide	Type H1 ADPK Models	Type H2 ADPC Models
5.7" 320 x 240 Resolution	√	√
16 Discrete Inputs Supports up to four 10Kpps inputs	√	√
16 Discrete Outputs, Supports up to four 5Khz pulse or 2.5KHz PWM outputs	√ (Sink)	√ (Source)
Analog Inputs(2 pt) and Outputs(2 pt) 0-20mA / 0-10VDC configurable	√	√
RTD PT100 3-wire input (2pt)	√	√
Communication Ports: Download/Barcode input	via Tool Port Only	via Tool Port Only
Application Memory	1MB	1MB
Software Compatibility	GPro-03	GPro-03

Order Number	Description
GLC150-BG41-ADPC-24V	6" Blue/White, Type H2, Ain/out, PT100 32DIO (source), 24VDC
GLC150-BG41-ADPK-24V	6" Blue/White, Type H1, Ain/out, PT100, 32 DIO (sink), 24VDC
GLC150-SC41-ADPC-24V	6" STN 64 Color, Type H2, Ain/out, PT100, 32 DIO (source), 24VDC
GLC150-SC41-ADPK-24V	6" STN 64 Color, Type H1, Ain/out, PT100, 32 DIO (sink), 24VDC

5.7" LT TYPE H1 & H2 THERMOCOUPLE TEMPERATURE GRAPHIC LOGIC CONTROLLER

GLC150 Series 5.7" Blue/White and STN Color UL Listed Class I Div 2

Type H1 and H2 Integrated Analog/Discrete/Thermocouple I/O



Selection Guide	Type H1 ADTK Models	Type H2 ADTC Models
5.7" 320 x 240 Resolution	√	√
16 Discrete Inputs Supports up to four 10Kpps inputs	√	√
16 Discrete Outputs, Supports up to four 5Khz pulse or 2.5KHz PWM outputs	√ (Sink)	√ (Source)
Analog Inputs(2 pt) and Outputs(2 pt) 0-20mA / 0-10VDC configurable	√	√
Type J/K Thermocouple input (3pt)	√	√
Communication Ports: Download/Barcode input	via Tool Port Only	via Tool Port Only
Application Memory	1MB	1MB
Software Compatibility	GPro-03	GPro-03

Order Number	Description
GLC150-BG41-ADTC-24V	6" Blue/White, Type H2, Ain/out, TC, 32DIO (source), 24VDC
GLC150-BG41-ADTK-24V	6" Blue/White, Type H1, Ain/out, TC, 32 DIO (sink), 24VDC
GLC150-SC41-ADTK-24V	6" STN 64 Color, Type H1, Ain/out, TC, 32 DIO (sink), 24VDC



FLEX NETWORK I/O FN-XXXX Modules For Distributed I/O Applications

- Compatible with any GLC2000 or GLC150 that supports a Flex Network Interface
 - Up to 63 FN modules can be connected to one GLC unit
 - Support up to 1008 Flex network I/O points per GLC unit
 - Supported by GP-PRO 03 HMI configuration software
 - Requires the use of at least one of the following cables
 - FN-CABLE-2010-31-MS 10 Meter Flex Network Cable
 - FN-CABLE-2050-31-MS 50 Meter Flex Network Cable
 - FN-CABLE-2200-31-MS 200 Meter Flex Network Cable
- Note: These cables do not use connectors and can be cut to length**

Flex Network modules For GLC2000 Series and Select GLC150 Series units

Distributed I/O Modules – Mix and Match

Analog – Discrete – High Speed Counter – Single Axis Positioning



Order Number	Description
<u>Discrete I/O Modules</u>	
FN-X16TS41	16 point Discrete Input (CE/UL/cUL)
FN-X32TS41	32 point Discrete Input (CE/UL/cUL)
FN-Y08RL41	8 Relay Discrete Output, 1 Common (CE/UL/cUL)
FN-Y16SK41	16 point Discrete Sink Output (CE/UL/cUL)
FN-Y16SC41	16 point Discrete Source Output (CE/UL/cUL)
FN-XY08TS41	8 point Discrete Input, 8 point Sink Transistor Output Unit (CE/UL/cUL)
FN-XY16SK41	16 point Discrete Input, 16 point Sink Transistor Output (CE/UL/cUL)
FN-XY16SC41	16 point Discrete Input, 16 point Source Transistor Output (CE/UL/cUL)
FN-XY32SKS41	32 point Discrete Input, 32 point Sink Transistor Output (CE/UL/cUL)
<u>Analog I/O Modules</u>	
FN-AD02AH41	2-Channel Analog Input: 0-10VDC 0-20ma, 4-20ma (CE/UL/cUL)
FN-AD04AH11	4-Channel Analog Input: 0-10VDC, +/-10VDC, 0-20ma, 4-20ma
FN-DA02AH41	2-Channel Analog Output: 0-10VDC 0-20ma, 4-20ma (CE/UL/cUL)
FN-DA04AH11	4-Channel Analog Output 0-10VDC, +/-10VDC, 0-20ma, 4-20ma
<u>Specialty I/O Modules</u>	
FN-HC10SK41	High-speed Counter input (200Khz) w/ comparator outputs (CE/UL/cUL)
FN-PC10SK41	Single-Axis Positioning Unit, Main Unit (CE/UL/cUL)
FN-PC10CB01	Motor Driver Connection Cable for Single-Axis Positioning
FN-PC10LD41	Handheld Teach/Loader for Single-Axis Positioning unit, CE/UL/cUL
FN-LD10CBL	Cable for Handheld Teach/Loader Unit

Communication Modules for GP477R, GP2000 and GLC2000



Communication modules interface GP477R, GP2000/01 and GLC2000 Series to various popular industrial networks. The GLC150 series of graphic logic controllers are not compatible. These communication modules mount directly to the backside of the GP or GLC Series unit via supplied mounting screws. ***It is necessary to check UL approval ratings for hazardous locations when combining communication modules with an HMI or Graphic Logic Controller unit.***

GP477R Compatible Communication Modules

Order Number	Description
QPI-ABD-201	AB Data Highway Plus comm module, UL1604, CE
QPI-ABR-201	AB 1771 Remote I/O comm module, UL1604, CE
QPI-MBP-XA1	Modicon Modbus Plus comm module, UL1604, CE
GP070-PF11	Profibus DP Slave comm module, no certifications
GP070-IB41	Interbus-S Slave comm module, UL, CE
GP070-CL11	Mitsubishi CC Link comm module, no certifications
GP070-DN41	DeviceNet Slave comm module, UL, CE
GP077-MLTE41	GP477R Multi Unit E with Ethernet, sound, Compact Flash

GP2300, GP2301, GLC2300 Compatible Communication Modules



PSM-CONV00 Adapter

Order Number	Description
QPJ-ABD-201*	AB Data Highway Plus comm module , UL1604, CE
QPJ-ABR-201*	AB 1771 Remote I/O comm module, UL1604, CE
CA3-MBPALL-41	Modbus Plus comm. Module, UL, CE
CA1-PFSALL-21	Profibus DP Slave comm module, CE only
CA2-PFMALL-21	Profibus DP Master comm module CE only, for GLC2000 models only
CA2-PFMALL-UTIL	Profibus DP Master configuration software for use with CA2-PFMALL-21
CA1-DNSALL-21	DeviceNet Slave comm module, CE only
CA2-DNMALL-41	DeviceNet Master comm module, UL, CE for GLC2000 models only
CA1-COSALL-21	CANopen Slave comm module, CE only
*PSM-CONV00	Required adapter for GP230x and GLC2300 when using QPJ comm. modules

Communication Modules for GP/GLC 2400, 2500, 2600 Series



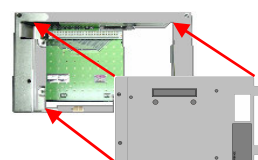
Communication modules interface GP2000/01 and GLC2000 Series to various popular industrial networks. The GLC150 series of graphic logic controllers are not compatible. These communication modules mount directly to the backside of the GP or GLC Series unit via supplied mounting screws. **It is necessary to check UL approval ratings for hazardous locations when combining communication modules with an HMI or Graphic Logic Controller unit.**

GP2400, GP2401, GLC2400
GP2500, GP2501, GLC2500
GP2600, GP2601, GLC2600

Compatible Communication Modules



PSL-CONV00



Order Number	Description
QPI-ABD-201*	AB Data Highway Plus comm module, UL1604, CE
QPI-ABR-201*	AB 1771 Remote I/O comm module, UL1604, CE
CA3-MBPALL-41	Modbus Plus comm module, UL, CE
CA1-PFSALL-21	Profibus DP Slave comm module, CE only
CA2-PFMALL-21	Profibus DP Master comm module, CE only for GLC2000 models only
CA2-PFMALL-UTIL	Profibus DP Master configuration software for use with CA2-PFMALL-21
CA1-DNSALL-21	DeviceNet Slave comm module, CE only
CA2-DNMALL-41	DeviceNet Master comm module, UL, CE for GLC2000 models only
CA1-COSALL-21	CANopen Slave comm module, CE only
*PSL-CONV00	Required adapter for QPI comm. modules with GP2000 and GLC2000 units

VIDEO MIX UNIT FOR GP2500T, GP2600T, GLC2500T, GLC2600T

Supports up to 4 Video Camera Inputs on Select HMIs (see line above)



Selection Guide	GP2000-VM41
Four NTSC/PAL Video Inputs	√
One VGA/SVGA Input 15 pin D-sub	√
One RGB Output for Remote Monitor	√
JPEG Screen Capture to CF card	√
Full Screen, 1/4, 1/16 image sizes	√
Mounts Backside of HMI unit	√
10 and 12 inch TFT GP/GLC2000 units compatibility only	√
Software Compatibility	GPro-03

Order Number	Description
GP2000-VM41	Video Mix unit for GP/GLC or 2500T/2600T,(requires GP PRO/PBIII V5.05 or higher)

GP-PRO/PBIII C-Package03 Configuration Software



Windows-based software with graphical editor for configuration of all GP, ST, LT, GLC Series HMIs. GP-PRO/PBIII C-Package03 offers a comprehensive set of panel operators, including: push buttons, selector switches, pilot lights, text and numeric data display, bar-graph displays, static and dynamic bit-mapped or object oriented images.

Key Features include:

- Trend Graphing up to 65000 data points with playback
- Multi-language tables activated via touch of a screen button
- Alarm History acknowledge and Recovery
- CSV data transfer to compact flash and Recipe modification
- Extended SIO communication scripting for communication to serial field devices

Order Number	Description
GPPRO-CNT01W-P03	GP-PRO/PBIII C-Package 03 Config. Software
GPPRO-03-SW-SUITE	GP-PRO 03 Software Suite: Includes: GPPRO 03, Pro-Server, GP Web Part numbers:GPPRO-CNT01W-P03 PSW-ED01-V45, and GW-CJ01-V16

Pro-Server with Pro-Studio Data Collection



Pro-Server with Pro-Studio is a data collection software package that allows production site data to be collected and sent to information management PCs in real-time. Pro-Server automatically records and accumulates production data, for immediate playback of either past or present line operating conditions.

Key Features Include:

- Importing /Exporting directly into Excel without programming or thru DDE
- User's defined triggers to generate reports and print reports
- Share PLC/Field I/O device data with MES systems
- Playback of accumulated data for analysis
- Remote Screen capturing
- Alert multiple departments of critical events for fast information sharing

Order Number	Description
PSW-ED01-V45	Pro-Server with Pro-Studio Version 4.1, CD-Rom with PDF manual Note: Must be used with GP-PRO/PBIII C-Package01 or later.
PSW-GV01-V11	GP Viewer Version 1.1 add-on pack to Pro Server for Data Playback

GP-Web Remote Access Internet Software



GP-Web software allows remote monitoring of GP units via your Internet web browser. This software is ideal for applications in which production data needs to be monitored by various management groups.

Key Features Include:

- Useful tool for remote diagnostics and system support
- Full Q-Tag Support, M-Tag Support Also
- Trend Graph Display into Excel remotely

Order Number	Description
GW-CJ01-V16	GP-Web Version 1.6, includes 3 concurrent Client Licenses and PDF manuals Note: Must be used with Pro-Server
GW-CJ01-CLTUL	Unlimited GP-Web Client Licenses

PRO-DESIGNER MULT-PLATFORM HMI CONFIGURATION SOFTWARE



Pro-Designer is a multi-platform HMI configuration software. This software allows you to create your HMI application and download the application to various targets.

Note GLC products currently not supported with this software.

Note: Not Compatible with GLC2000, GLC150 LT units GP477R, and select ST40x units.

Features

- **Offline Development Environment**
- **Standard HMI Features:**
 - Button, lamps, meters, and graphics
 - Recipes
 - Alarming
 - Trending: real time and historical
 - Popup keypads
 - Extensive symbol library
 - Graphic file import: BMP, JPG, EMF, PNG, and Pro-face graphics format DPD
- **Advanced HMI Features:**
 - Simultaneous multi-protocol support
 - Multi-platform support
 - Data sharing between units over Ethernet with ease¹
 - Download via Ethernet, serial port, or CompactFlash™ 1
 - Remote monitoring via optional Pro-eView software¹
 - Java-based scripting
 - Wide range of animations
 - Simultaneous support of multiple languages at runtime
 - Sound Output¹ with .WAV and .DAF import
 - Printing¹
 - Bar code reader support
 - Real-time simulation on development PC, including variable data value

PRO-DESIGNER CONFIGURATION SOFTWARE

Order Number	Description
PS-DWE01-V4210	Pro-Designer HMI Development software Version 4.2
PS-DWE01-5Pack	Pro-Designer V4.2.10, Five individually licensed software packages.
PS-DWE01-10Pack	Pro-Designer V4.2.10, Ten individually licensed software packages.

PRO-DESIGNER RUNTIME LICENSE PER PC OR HMI UNIT

Order Number	Description
PS-DCR01*	Pro-Designer PC Runtime License (PC/AT)
PS-ECR01*	Pro-eView PC Web-enabled Runtime License (PC/AT)
PS-EPR01	Pro-eView GP/GLC2000, Factory Gateway Web-enabled Runtime License

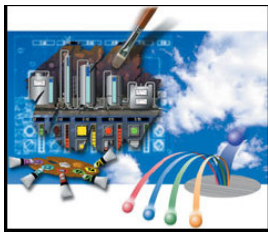
*For PC with touchscreen units only, Keypad and mouse is not supported.

Note: No Development Runtime License needed for GP or Factory Gateway. Web-enabled Pro-eView requires a runtime license per HMI unit.

PRO-DESIGNER PC WORKSTATIONS



3112T-PDWS



***Pro-Designer Multi-Platform
Pre-Loaded!***

Features

- 12.1" SVGA (800x600) flat panel TFT color display
- Analog resistive touchscreen
- Preloaded with Pro-face Pro-Designer HMI Runtime software
- Intel® Socket 370 Celeron® 1.2 GHz CPU, 256 KB cache, 100 MHz system bus
- 256 MB SDRAM
- AGP graphics controller with BIOS-selectable video RAM up to 64 MB (uses DRAM)
- VGA port for remote monitor
- Supports using remote monitor and built-in display simultaneously
- Preloaded with Windows® 2000 operating system
- 20 GB internal hard drive
- Side accessible 1.44 MB floppy drive and CD-ROM drive
- Type I CompactFlash™ card slot
- Two RS-232 ports
- One configurable RS-232/422/485 port
- Two SPP/EPP/ECP parallel ports
- 10/100Base-T Ethernet
- Audio input/output/mic
- PS/2 keyboard/mouse port (Y-cable included)
- Mounted with mounting CL Ips or standard 75/100 mm VESA arm
- Power cable and drivers included
- 100-240 V AC power supply
- NEMA 4/4X/12, IP65 front panel
- 1-year warranty

Order Number	Description
3112T-PDWS	12.1" SVGA Pro-Designer Pre-loaded WorkStation

GP2000 and GP37W2/3 Quick Start Kits – Configurable

Each Kit Includes:



- Any GP unit listed below
- GP Pro HMI or Pro-Designer development software
- User-specified Programming Cable
- User-Specified PLC Cable

Model No. QS- _____ - _____ - CB _____ - C _____

Select a GP Unit

- GP37W2-BG41-24V
- GP37W3-BG41-24V
- GP2301-LG41-24V
- GP2300-LG41-24V
- GP2301-SC41-24V
- GP2300-SC41-24V
- GP2301-TC41-24V
- GP2300-TC41-24V
- GP2400-TC41-24V
- GP2401-TC41-24V
- GP477R-EG11
- GP477R-EG41-24VP
- GP2500-LG41-24V
- GP2500-SC41-24V
- GP2500-TC41-24V
- GP2500-TC11
- GP2501-TC11
- GP2501-SC11
- GP2501-LG41-24V
- GP2600-TC41-24V
- GP2600-TC11
- GP2601-TC11

HMI Development Software

GPRO = GP-Pro C-package0x, current version
PDES = Pro-Designer¹

Program Cable

ET = Cross over Ethernet cable²
02 = GPW-CB02
03 = GPW-CB03

PLC Cable (Select one cable below)

- | | |
|--|---|
| <ul style="list-style-type: none"> 052 = HMI-CAB-C52 053 = HMI-CAB-C53 058 = HMI-CAB-C58 067 = HMI-CAB-C67 083 = HMI-CAB-C83 084 = HMI-CAB-C84 086 = HMI-CAB-C86 091 = HMI-CAB-C91 | <ul style="list-style-type: none"> 094 = HMI-CAB-C94 100 = HMI-CAB-C100 101 = HMI-CAB-C101 102 = HMI-CAB-C102 106 = HMI-CAB-C106 110 = HMI-CAB-C110 232 = HMI-CAB-C232 422 = HMI-CAB-C422 ETH = HMI-CAB-ETH² |
|--|---|

¹ GP2000, GP2001 and GP37W3 units only

² GP2000 units only

GLC2000 and GLC150 Series Quick Start Kits – Configurable

Quick Start Kits Include:

- Any GLC2000 or GLC150 unit listed below
- GP Pro HMI development software
- User-specified Download Program Cable
- User-Specified PLC or I/O Cable



Model No. QSGLC- _____ - _____ - CB - C _____

Select a GLC Unit

- GLC2300-TC41-24V
- GLC2300-LG41-24V
- GLC2400-TC41-24V
- GLC2500-TC41-24V
- GLC2500-TC41-200V
- GLC2600-TC41-24V
- GLC2600-TC41-200V
- GLC150-BG41-XY32SK-24V
- GLC150-SC41-XY32SK-24V
- GLC150-BG41-XY32SC-24V
- GLC150-BG41-FLEX-24V⁴
- GLC150-BG41-XY32KF-24V⁴
- GLC150-SC41-XY32KF-24V⁴
- GLC150-BG41-RSFL-24V⁴
- GLC150-BG41-DNM-24V
- GLC150-BG41-ADC-24V
- GLC150-BG41-ADK-24V
- GLC150-SC41-ADK-24V
- GLC150-BG41-ADPC-24V
- GLC150-SC41-ADPC-24V
- GLC150-BG41-ADPK-24V
- GLC150-SC41-ADPK-24V
- GLC150-BG41-ADTC-24V
- GLC150-BG41-ADTK-24V
- GLC150-SC41-ADTK-24V

HMI Development Software

GPRO = GP-Pro C-package03

Program Cable

- ET** = Cross over Ethernet cable¹
- 02** = GPW-CB02 RS-232 cable
- 03** = GPW-CB03 USB cable

PLC or I/O Cable (Select one cable below)

- | | |
|--|--|
| <ul style="list-style-type: none"> 0 = No Cable 052 = HMI-CAB-C52² 053 = HMI-CAB-C53² 058 = HMI-CAB-C58² 067 = HMI-CAB-C67² 083 = HMI-CAB-C83² 084 = HMI-CAB-C84² 101 = HMI-CAB-C101² | <ul style="list-style-type: none"> 102 = HMI-CAB-C102² 106 = HMI-CAB-C106² 110 = HMI-CAB-C110² 232 = HMI-CAB-C232² ETH = HMI-CAB-ETH¹ TRM1M = TRMBLK (142720) + 1MCBL (142722)³ TRM2M = TRMBLK (142720) + 2MCBL (142723)³ DIOCB11 = GLC000-DIOCB11-MS³ |
|--|--|

¹ For GLC2000 Series only. Select only one Ethernet cable.

² For GLC2000 Series or GLC150-BG41-RSFL-24V only.

³ For GLC150-XX41-XY32SK-24V or GLC150-XX41-XY32SC-24V or GLC150-XX41-XY32KF-24V units only.

⁴ These units require a Flex Network Module and a Flex Network Cable.

Pro-face Cables and Cable Accessories:

PROGRAMMING CABLES, PRINTER CABLES and SERIAL PORT ISOLATORS

Order Number	Description
GPW-CB02	RS-232 HMI Programming Cable: Connects HMI to PC Port 9 pin D-Sub
GPW-CB03	USB HMI Programming Cable: Connect HMI to PC USB port
HMI-CAB-ETH	Ethernet crossover cable 6 ft: HMI to PLC Ethernet port or to program HMI
PSM-PRCB00	Serial Printer Cable for GP/GLC 2400, 2500, 2600 series units
HMI-CAB-C99	Parallel Printer Cable for GPx77series units
CA2-ISOALL232-01	RS-232 Port Isolator for GP and GLC HMI 25Pin D-sub serial ports
CA2-ISOALL422-01	RS-422 Port Isolator for GP and GLC HMI 25Pin D-sub serial ports

Pro-face Flex Network Cables and GLC150 Cable Accessories:

Order Number	Description
142055	Replacement DeviceNet Master Connector for GLC150 Type D or CA2-DNMALL-41
142720	Terminal Block, 32 point I/O for GLC150 Type A1, A2 and B+
142722	I/O Cable 1m, connects terminal block (142720) to GLC150 Type A1, A2 or B+
142723	I/O Cable 2m, connects terminal block (142720) to GLC150 Type A1, A2 or B+
GLC100-DIOCON01	DIO Connector/cover for GLC150 Type A1 and A2 (qty 5)
GLC000-DIOCB11-MS	DIO cable 3m, open end for GLC150 Type A1 and A2
FN-IFCN01	Flex Network Connector for GLC150 Type B, B+ and C (5 sets)
GLC2300-FNCN01	Flex Network Connector for GLC2300 (5 sets)
GPL-AXCN01	Flex Network AUX Connector for GLC2500, GLC2600 (Qty 1)
GPM-AXCN01	Flex Network AUX Connector for GLC2400 (Qty 1)
FN-CABLE-2010-31-MS	10 Meter Flex Network Cable
FN-CABLE-2050-31-MS	50 Meter Flex Network Cable
FN-CABLE-2200-31-MS	200 Meter Flex Network Cable

GPH70 HANDHELD CABLES AND ACCESSORIES

Order Number	Description
GPH70-C232-O	RS-232C Cable, 3m, Connects to GP-H70 Handhelds other end is open wires
GPH70-C232-MS	RS-232C Cable, 10m, Connects to GP-H70 Handhelds other end is open wires
GPH70-D232-MS	RS-232C Cable, 10m, D-Sub connector, connects handheld to GPH70-AP232-O
GPH70-AP232-O	RS-232C GPH70 Breakout adaptor for use with GPH70-D232-MS
GPH70-C422-O	RS-422 Cable, 3m, Connects to GP-H70 Handhelds other end is open wires
GPH70-D422-MS	RS-422 Cable, 10m, D-Sub connector, connects handheld to GPH70-AP232-O
GPH70-AP422-O	RS-422 GPH70 Breakout adaptor for use with GPH70-D422-MS
HMI-CAB-A02	RS-232C/RS-422 cable, 12', connects GPH70 handheld to HMI-JBX-201
HMI-CAB-A02-25X	RS-232C/RS-422 cable, 25', connects GPH70 handheld to HMI-JBX-201
HMI-CAB-A02-50X	RS-232C/RS-422 cable, 50', connects GPH70 handheld to HMI-JBX-201
HMI-JBX-201*	RS-232C/RS-422 breakout adaptor for use with HMI-CAB-A02 cables

*Check Availability

PLC CABLES FOR GP/GLC With RS-232/RS-422 25 PIN D-Sub SERIAL PORTS

All Cables 10 Feet in length unless noted otherwise.

Extended length cables identified by “-20x, -30x, -50x” where number denotes length in feet

PLC Manu.	Description	Order Number
Generic PLC Cables and Adapters		
RS-232	Connects GP/GLC to PLC RS-232 port via open wires	HMI-CAB-C232
RS-232C	Cross Type 25 pin D-sub connector both ends (5M)	GP410-IS00-O
RS-232C	Straight Cable with 25 pin D-sub both ends (5M)	GP410-IS01-O
RS-422	Connects GP/GLC to PLC RS-422 port via open wires	HMI-CAB-C422
RS-422 Serial	25 pin D-sub connector to 9 pin D-sub (5M)	GP230-IS11-O
RS-422	Multi-link 25 pin D-sub connector to 9 pin D-sub (5M)	GP230-IS12-O
Adapter	RS-422 25 Pin D-sub to screw terminal adapter	GP070-CN10-O
Allen Bradley		
SLC 500, 5/01 5/02, 5/03	Connects GP/GLC to SLC DH485 Program Port via 8 pin RJ45 modular phone connector	HMI-CAB-C83 HMI-CAB-C83-20x
SLC 500, 5/01 5/02, 5/03	Connects GP/GLC to SLC DH485 Program Port via 8 pin RJ45 modular phone connector plus includes 8 pin Socket modular phone, 6 foot	HMI-CAB-C84 HMI-CAB-C84-20X
	Similar to C84 cable, For GP2000/GLC2000 Units (not for use in multi-drop configurations)	HMI-CAB-XY84
SLC 5/03, 5/04	Connects GP/GLC to SLC RS-232 9 pin D-sub port	HMI-CAB-C52 HMI-CAB-C52-30X HMI-CAB-C52-50X
PLC-5	Connects GP/GLC to PLC-5 RS-232 25 pin D-sub port	HMI-CAB-C53
PLC-2	Connects GP/GLC to PLC-2 RS-422 15 pin D-sub Program port	HMI-CAB-C90
Micrologix	Connects GP/GLC to Micrologix RS-232 8 pin circular DIN port	HMI-CAB-C106
Remote I/O Data Highway Plus		See Communication Modules See Communication Modules
AIC+ Port 3	Connects GP/GLC to AIC Port 3 via open end wires	HMI-CAB-C117A
Aromat (Panasonic/Matsushita)		
FP1 (MEWNET)	Connects GP/GLC to Aromat PLC via RS-232 9 pin D-sub	HMI-CAB-C111
ASCII Single Drop		
	Connects GP/GLC to 3 rd party RS-232 screw terminal serial port	HMI-CAB-C232
	Connects GP/GLC to 3 rd party RS-422 screw terminal serial port	HMI-CAB-C422
GE Fanuc		
90/30, 90/70	Connects GP/GLC to PLC RS-422 Program port via 15 pin D-sub	HMI-CAB-C82
SNP protocol	Connects GP/GLC to PLC CMM Module via RS-232 25 pin D-sub	HMI-CAB-C53
	Connects GP/GLC to PLC CMM Module via RS-422 25 pin D-sub	HMI-CAB-C93
90/30 CPU351/352/363	Connects GP/GLC to PLC RS-232 port via RJ11	HMI-CAB-C120*
VersaMax Micro/Nano	Connects GP/GLC to PLC RS-232 port via RJ45	HMI-CAB-C119*
VersaMax CPU001/002/005	Connects GP/GLC to PLC RS-232 port via 9 pin D-sub	HMI-CAB-C111

*** Check Availability**

PLC CABLES FOR GP/GLC WITH RS-232/RS-422 25 PIN D-Sub SERIAL PORTS

All Cables 10 Feet in length unless noted otherwise.

Extended length cables identified by “-20x, -30x, -50x” where number denotes length in feet

PLC Manu.	Description	Order Number
IDEC		
Micro-1, FA	Connects GP/GLC to PLC RS-232 25 pin D-sub port via link Adapter	HMI-CAB-C53
Micro 3	GP/GLC to Micro 3 PLC RS-232 9 pin D-sub port	HMI-CAB-C109
Keyence		
KV-L2 Port 1	Connects GP/GLC to PLC Port 1 via RS-232 25 pin D-sub	HMI-CAB-C53
Koyo/PLC Direct		
DL430, 440 P2	Connects GP/GLC to PLC RS-232 25 pin D-sub port	HMI-CAB-C53
D4-DCM	Connects GP/GLC to PLC RS-232 25 pin D-sub port	HMI-CAB-C53
DL330	Connects GP/GLC to PLC RS-232 25 pin D-sub port	HMI-CAB-C53
DL330P	Connects GP/GLC to PLC RS-232 25 pin D-sub port with use of D3-232-DCU	HMI-CAB-C53
DL350 Port 2	Connects GP/GLC to PLC RS-232 port via 25 pin D-sub	HMI-CAB-C53
DL450P Port A	Connects GP/GLC to PLC RS-232 port via 25 pin D-sub	HMI-CAB-C53
DL250 Port 1	Connects GP/GLC to PLC RS-232 via 6-pin Modular Phone	HMI-CAB-C86
DL350 Port 1	Connects GP/GLC to PLC RS-232 via 6-pin Modular Phone	HMI-CAB-C86
DL240 Port 2	Connects GP/GLC to PLC RS-232 via 6-pin Modular Phone	HMI-CAB-C86
Mitsubishi		
2 Port Adapter II	A/QnA/FX series for GP2000 / GLC2000	GP070-MD11
Adapter cable	RS-422, 5m, for 2 Port Adapter II (GP070-MD11)	GP070-MDCB11
Series A1S	Connects GP/GLC to PLC A1SJ71C24-R2 via RS-232 9 pin D-sub	HMI-CAB-C88
Series A	Connects GP/GLC to PLC computer interface RS-232 25 pin D-sub	HMI-CAB-C53
FX, FXO	Connects GP/GLC to PLC program port FX, FXO via RS-422 25 pin D-sub (note: FXO requires Adapter)	GP2000-CBLFX/1M-01 GP2000-CBLFX/5M-01
	Connects GP/GLC to Mitsubishi Programming Port	HMI-CAB-C91
	Connects GP/GLC to Mitsubishi FX Programming Port	GP430-IP10-O GP430-IP11-O
Modicon		
984 A, B, X	Connects GP/GLC to PLC RS-232 port via 25 pin D-sub	HMI-CAB-C53
984 Slot /compact	Connects GP/GLC to PLC RS-232 port via 9 pin D-sub	HMI-CAB-C58
984 Micro	Connects GP/GLC to PLC RS-232 port via RJ45	HMI-CAB-C102
Omron		
CS1	Omron CS1 Cable, Connects to GP/GLC via 25 pin D-sub	GP000-IS03-MS
C200H	Connects GP/GLC to PLC RS-232 port via 25 pin D-sub	HMI-CAB-C53
C20H, CQM1	Connects GP/GLC to PLC RS-232 port via 9 pin D-sub	HMI-CAB-C67
Reliance		
Automate program port, R-net gateway	Connects GP/GLC to PLC RS-232 port via 25 pin D-sub	HMI-CAB-C53

PLC CABLES FOR GP/GLC WITH RS-232/RS-422 25 PIN D-Sub SERIAL PORTS

All Cables 10 Feet in length unless noted otherwise.

Extended length cables identified by “-20x, -30x, -50x” where number denotes length in feet

PLC Manu.	Description	Order Number
Siemens		
MPI Cable	Connects GP/GLC to Siemens PLC via MPI connection	GP070-MPI-41
S5 family	Connects GP/GLC to Siemens S5 via TTY converter, 5m	GP000-IS11-O
S5 family	Connects GP/GLC to PLC program port via 15 pin current loop	HMI-CAB-C76
3964R 928B RS-232 Sub Module	Connects GP/GLC to PLC RS-232 port via 25 pin D-sub	HMI-CAB-C53
S7-200 PPI	Connects GP/GLC to PLC RS-422 port via 9 pin D-sub	HMI-CAB-C110 HMI-CAB-C110-20X
S7-300 MPI	Connects GP/GLC to PLC RS-232 port via 9 pin D-sub	HMI-CAB-C52 HMI-CAB-C52-30X HMI-CAB-C52-50X
Simatic TI		
305 w/RS-232 DCU	Connects GP/GLC to PLC Port 1 via RS-232 25 pin D-sub	HMI-CAB-C53
405 series	Connects GP/GLC to PLC Port 1 via RS-232 25 pin D-sub	HMI-CAB-C53
500 series	Connects GP/GLC to PLC Program Port via RS-232 25 pin D-sub	HMI-CAB-C53
500 series	Connects GP/GLC to PLC Program Port via RS-232 9 pin D-sub	HMI-CAB-C101
500 series	Connects GP/GLC to PLC RS-422 port via 9 pin D-sub	HMI-CAB-C92
TI545-1102	Connects GP/GLC to PLC Program Port via RS-422 9 pin D-sub	HMI-CAB-C100
Square D		
Symax 100 and greater	Connects GP/GLC to PLC RS-422 port via 9 pin D-sub	HMI-CAB-C94
Symax 50 via link adapter	Connects GP/GLC to PLC Port 1 via RS-232 25 pin D-sub	HMI-CAB-C53
Toyopuc		
Toyopuc PC1	Connects GP/GLC to PLC RS-422 port via half duplex 3-plated wires	HMI-CAB-C113
Toyopuc PC2F	GP/GLC to PLC RS-422 port via half duplex 4 spade lug wires	HMI-CAB-C114
Uni-Telway		
TSX37 Series	Connects GP/GLC to PLC via 8 pin Mini DIN connector	HMI-CAB-C116

Pro-face Accessories – Maintenance and Replacement Components

HMI MOUNTING ACCESSORIES

Order Number	Description
GP070-AT01	Installation Mounting Fasteners, 1 set of 4 fasteners for all HMI and GLC units
CA1-STDLRG-01	Desktop Stand for GP250x and GP260x units
CA1-WMALRG-01	Wall Mount Adaptor for GP2000H handhelds, GP250x and GP260x units

COMPACT FLASH CARDS AND ACCESSORIES

Number	Description
CA3-CFCALL/64MB-01	64MB Compact Flash card for GP2000, GP2001 and IT2400
CA3-CFCALL/256MB-01	256MB Compact Flash card for GP2000, GP2001 and IT2400
CA3-CFCALL/512MB-01	512MB Compact Flash card for GP2000, GP2001 and IT2400
GP077-CFAD10	Adapter: Compact Flash card PCMCIA adapter
GP077-CFFM10	Front Access Panel Mount CF Card Maintenance Unit for GP2500/2600

CLEAR PROTECTIVE TOUCH SCREEN OVERLAYS

Order Number	Description
ST400-DF01	ST40x Touch Screen Protection Sheet (Qty 5)
GP470/477-COVER-10P	GP470/477R Touch Screen Soft Protection Sheet (Qty 10)
GP470/477-DF10	GP470/477R Touch Screen Hard Protection Sheet (Qty 5)
GP37W2-DF00	GP37W2, GP37W3, GLC150 Series Screen Protection Sheet (Qty 5)
PS300-DF00	GP2300, GP2301, GLC2300 Touch Screen Protection Sheet (Qty 5)
PS400-DF00	GP2400, GP2401, GLC2400 Touch Screen Protection Sheet (Qty 5)
PSL-DF00	GP2500, GP2501, GLC2500, GLC2600 Touch Screen Protection Sht (Qty 5)
GP2000H-DF10	GP2000H Handheld Touch Screen Protection Sheet (Qty 5)
GPH70-DF10-O	GPH70 Handheld Touch Screen Protection Sheet (Qty 10)

POWER SUPPLIES

Order Number	Description
510-1000-004	24VDC, 1Amp power supply, Din Rail Mount Class I Div 2
510-1000-041	24VDC, 2Amp power supply, Din Rail Mount Class I Div 2

MISCELLANEOUS ACCESSORIES

Order Number	Description
GP077-SDAD10	Multi Unit Pin Jack Adapter for GP/GLC with sound output

Pro-face Accessories – Maintenance and Replacement Components

BACKLIGHTS FOR GP AND GLC HMI UNITS

Number	Description
PS300-BU00*	GP2300/GP2301/GLC2300 Replacement backlight Mono or STN Color
PS400-BU00-MS	GP2400, GP2401, GLC2400 Replacement backlight TFT Color
PS501S-BU00	GP2501S Replacement backlight STN Color
PS500S-BU00	GP2500S, Replacement backlight STN Color
GP577RT-BL00-MS*	GP2500T, GP2501T, GLC2500, Replacement backlight TFT Color
PS600-BU00-MS	GP2600, GP2601, GLC2600 Replacement backlight TFT Color

STAINLESS STEEL BEZELS (Special Order Call for Availability)

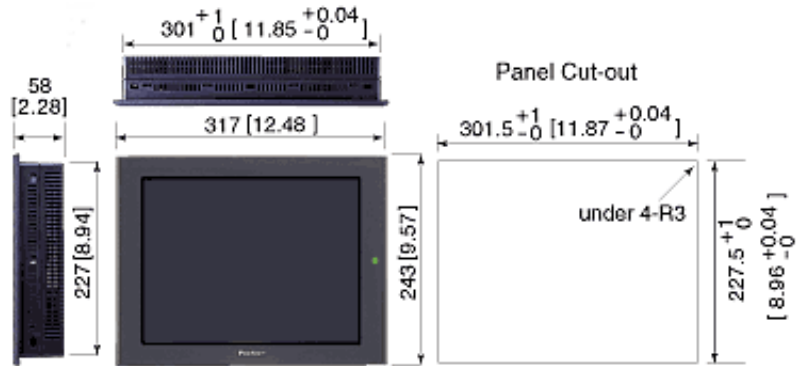
Order Number	Description
HMI-BEZ-202	Stainless Steel NEMA 4X Bezel for GP477R 9" EL
HMI-BEZ-403	Stainless Steel NEMA 4X Bezel for GP250x 10.5"
HMI-BEZ-405	Stainless Steel NEMA 4X Bezel for GP260x 12.1"
HMI-BEZ-406	Stainless Steel NEMA 4X Bezel for GP240x 7.4"

MANUALS

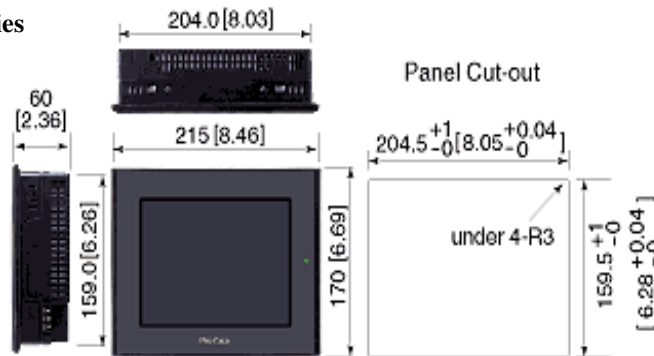
Manuals are also available for download free of charge from www.xycom.com web site.

GP/GLC Panel Cutout Dimensions

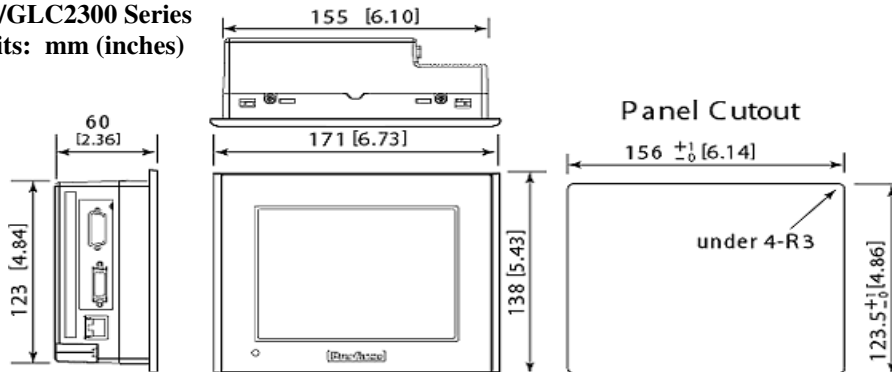
GP/GLC 2600/2500 Series
Units: mm (inches)



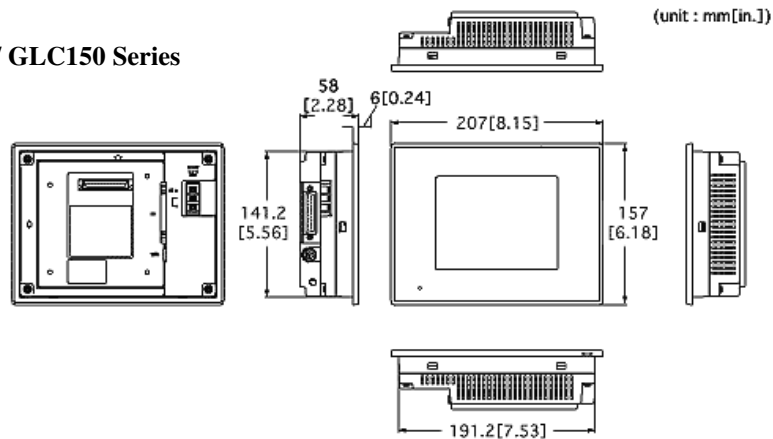
GP/GLC 2400T Series
Units: mm (inches)



GP/GLC2300 Series
Units: mm (inches)

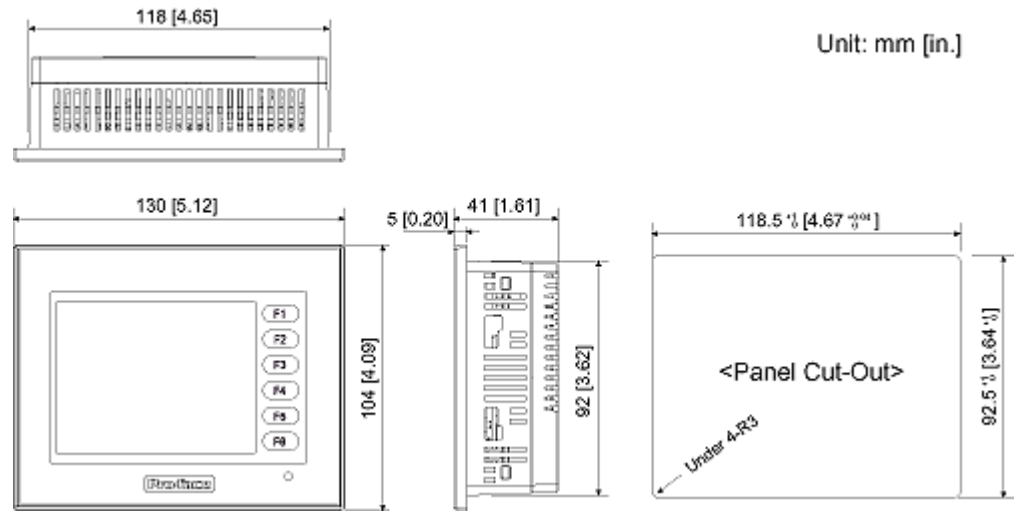


GP37W2/W3/ GLC150 Series



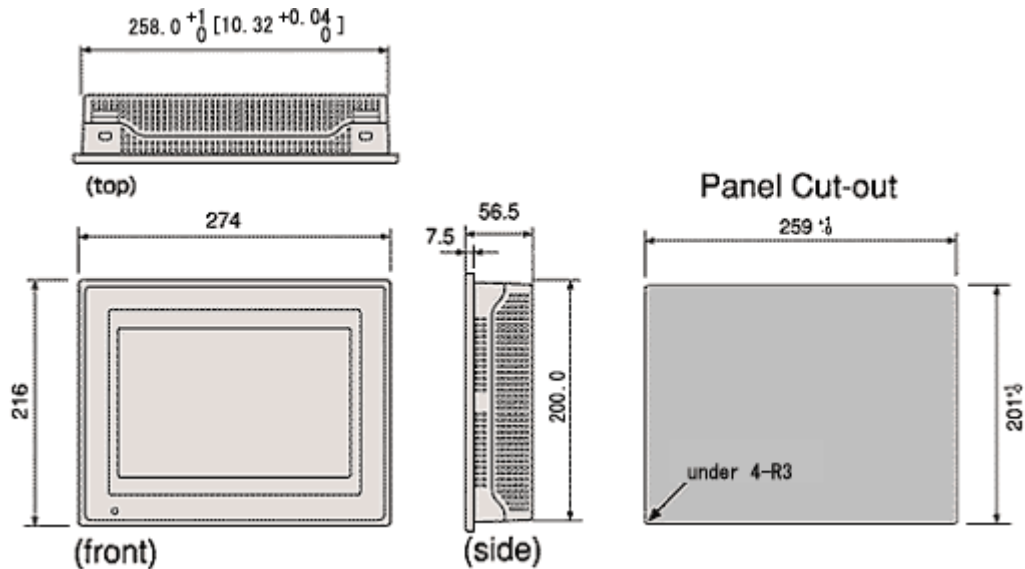
GP/GLC Panel Cutout Dimensions

ST40x Models



GP477R Models

Units: mm



Product guide_proface_B

Xycom Automation
 750 North Maple Rd.
 Saline, MI 48176-1292
 Phone: 734-944-0482
 Fax: 734-429-1010
<http://www.xycom.com>

