



# Advanced SP5000X

For outdoor applications

**GP-ProEX**



[profaceamerica.com](http://profaceamerica.com)

**Pro-face**<sup>™</sup>  
by Schneider Electric

# The HMI designed for demanding outdoor conditions.

## Robust design for harsh environment

### Readable in any light

Equipped with anti-reflection/anti-glare and high brightness display.



### Robust built

Fully Coated, wide Temperatures Range, Resistant to Shocks, Vibrations, Dust, and Waterproof, Compatible with DC-12-24V,



### UV protection

Shields against UV rays, preventing component deterioration.



### For harsh models

Enhanced coating protection for corrosive resistance.



### Safety certified

Certified Haz. Loc Class1, Div2- ATEX/IECEX Zone 2/22, Ex-CCC.

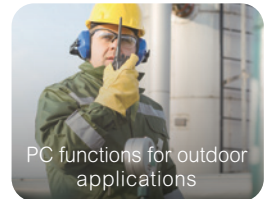
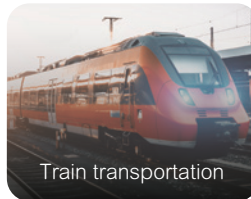
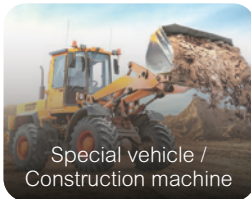
## Easy to maintain

- Display and box are separated
- Exchangeable SD card
- No need for battery replacement

## IoT solution

- Remote monitoring and maintenance from a PC or tablet
- Access multi-media apps: Utilize the Open Box to access multimedia functions (PDF/Web viewer, Windows apps)

## Use cases



Display Module	SP-5790WA (-F0H)	SP-5690WA (-F0H)	SP-5490WA (-F0H)	SP-5790WA-FU	SP-5690WA-FU	SP-5490WA-FU
Display Type	TFT Color LCD (High-brightness)					
Display Size	15.6" wide	12.1" wide	7" wide	15.6" wide	12.1" wide	7" wide
Resolution	1,366 × 768 pixels (FWXGA)	1,280 × 800 pixels (WXGA)	800 × 480 pixels (WVGA)	1,366 × 768 pixels (FWXGA)	1,280 × 800 pixels (WXGA)	800 × 480 pixels (WVGA)
Brightness	1000 cd/m2 (typ.)					
Rated input voltage	12 to 24 Vdc					
Ambient air temperature	-20 to 60 °C (-4 to 140 °F)	-30 to 70 °C (-22 to 158 °F)	-30 to 65 °C (-22 to 149 °F)	-20 to 60 °C (-4 to 140 °F)	-30 to 70 °C (-22 to 158 °F)	-30 to 65 °C (-22 to 149 °F)
Corrosive gases	Free except for harsh models (ending with -F0H) IEC/EN 60721-3-3 Class 3C3			Free of corrosive gases		
Front bezel	Aluminum die-cast Stainless steel					
Shock & Vibration	15G & 1G	40G & 2G		15G & 1G	40G & 2G	
Atmospheric pressure	800 to 1,114 hPa (2,000m [6,561 ft] or lower)					
Box Module	SP-5B90 (-F0H)			SP-5B411/412		
Interface	COM × 2 Ethernet × 2 USB × 3 SD Card Slot × 2 Sound Output × 1 Aux Output × 2 Expansion Fieldbus × 1			COM × 2 Ethernet × 2 USB × 4 CF × 2 SD Card Slot (Storage) × 1 Sound Output × 1 Aux Output × 2 DVI Output × 1 Micro Input × 1 Expansion Fieldbus × 1		

Box Module has limited environmental specs (Temperature 0/60°C, Shock & Vibration 15G & 1G)

[profaceamerica.com](http://profaceamerica.com)

For more details information and Manuals, Certification, and related software to download.  
<https://www.proface.com/en-us/product/hmi/sp5000x/top>

Contact Us (Worldwide Pro-face)  
<https://www.proface.com/en-us/contactus>

©2024 Schneider Electric Japan Holdings Ltd. All Rights Reserved.  
 HMI\_SP5000X\_Leaflet\_EN\_10