

# SP-5B00 Standard Box Module

**SP5000 SERIES**



**Features:**

- Enhanced maintenance process.
- Modular design
- Change screen size with easy "snap on box module"
- Programmable with GP Pro EX v4.08.200 or greater
- Enhanced Connectivity: Ethernet port, 2 COM ports, 2 Type A, USB ports, 1 mini USB

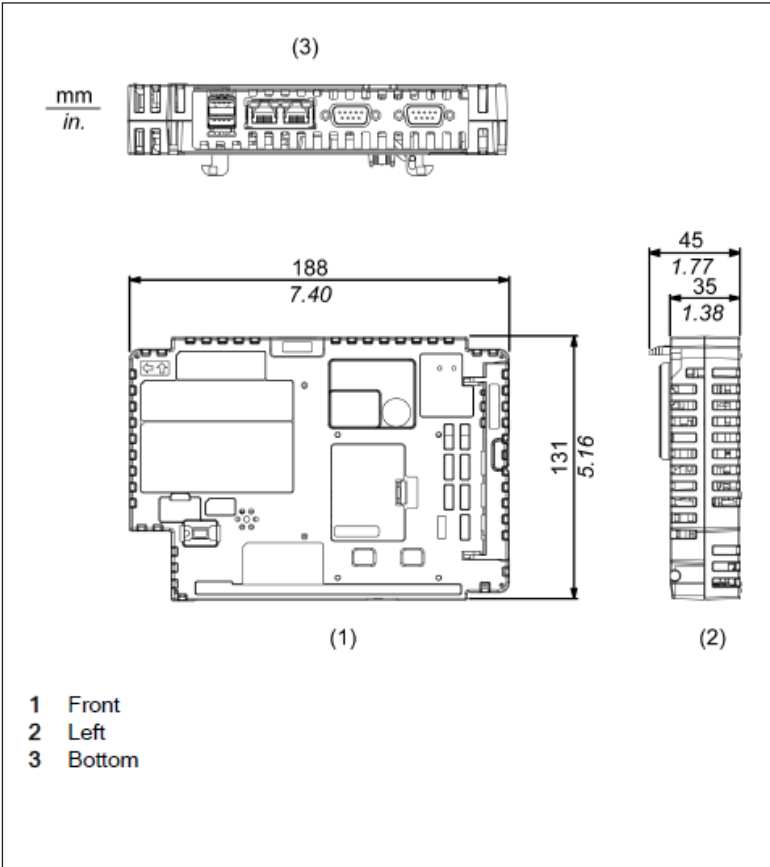
**Performance Specifications**

Models	SP-5B00 Standard Box		
Part Number	PFXSP5B00	PFXSP5B00F0C	
Conformal Coating	No	Yes	
Operating System	Real Time OS		
Application Memory	On board Flash (1 GB)		
Backup Memory	NVRAM 320 KB		
Interfaces	Serial	COM1	RS-232C, Data Length: 7 or 8 bits, Stop Bit: 1 or 2 bits Parity: None, odd, or even, Data Transmission Speed: 2,400,1,200,115,200bps Connector: D-Sub 9 pin (plug)
		COM2	RS-422/485, Data Length: 7 or 8 bits Stop Bit: 1 or 2 bits Parity: None, odd, or even Data Transmission Speed: 2,400(1,200)...115,200 bps, 187,500bps (MPI) Connector: D-Sub 9 pin (plug)
	Ethernet	IEEE802.3i/IEEE802.3u/IEEE802.3ab, 10BASE-T/100BASE-TX Connector: Modular jack (RJ-45) x 2	
	USB	Type A (V2.0) x2, Mini B (V2.0) x1	
	SD Card	SD Card Slot (Storage) x 1	

**General Specifications**

Models	<b>SP-5B00 Standard Box</b>
Part Numbers	PFXSP5B00
Input Voltage	12Vdc (Supply from Display Module)
Power Consumption	17.5W (max), 8.8W or less (when power is not supplied to external devices)
Surrounding Air Temperature	0...60 °C [32...140 °F]
Storage Temperature	- 20 to +60 °C (- 4 to +140 °F)
Certifications	UL61010-2-201, CSA61010-201, CE, RoHS, GOST-R, KC, ATEX Zone 2/22, IECEx Zone 2/22
Ratings	CSA C22.2No213, ANSI/ISA 12.12.01, EN61000-6-4, EN61000-6-2, Class 1 Div 2 Groups A, B, C and D
Surrounding Air and Storage Humidity	10%...90% RH (Non condensing, wet bulb temperature 39 °C [102.2 °F] or less)
Dust	0.1 mg/m3 (10-7 oz/ft3) or less (non-conductive levels)
Pollution Degree	For use in Pollution Degree 2 environment
Corrosive Gas	Free of corrosive gases
Atmospheric Pressure (Operating Altitude)	800...1,114 hPa (2,000 m [6,561 ft] or lower)
Vibration Resistance	IEC/EN 61131-2 compliant 5...9 Hz Single amplitude 3.5 mm (0.14 in.) 9...150 Hz Fixed acceleration: 9.8 m/s2 X, Y, Z directions for 10 cycles (approx. 100 min.)
Shock Resistance	IEC/EN 61131-2 compliant 147 m/s2, X, Y, Z directions for 3 times
Electrostatic Discharge Immunity	Contact Discharge Method: 6 kV (IEC/EN 61000-4-2 Level 3)
Weight	0.9kg[1.98lb] or less
External Dimensions	W188 x H131 xD45mm [W7.4 x H5.16 x D1.77 in.]
Warranty	Two (2) years

**External Dimensions**



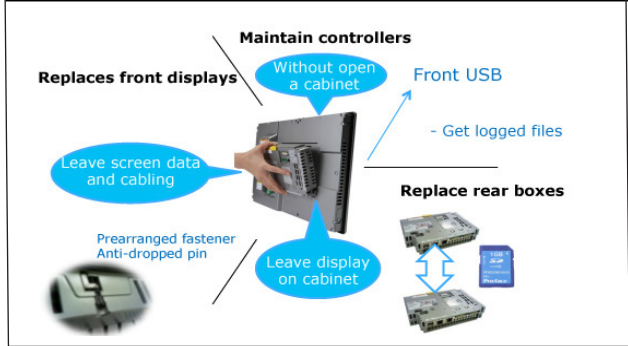
**Ordering Information**

Type	Model Numbers	Description
Standard Box	PFXSP5B00	Ethernet I/F x 2, COM I/F x 2, USB A I/F x 2, USB mini-B I/F, SD Card I/F
Standard Box	PFXSP5B00F0C	SP5000 Series Standard Box, Ethernet I/F x 2, COM I/F x 2, USB A I/F x 2, USB mini, SD Card I/F, conformal coated

**Options**

Part Number	Product Name	Description
PFXZCDS1GC61	SD (1 GB)	SD Memory Card (1 GB, SLC, Class 6)

**Modular Design and Easy Maintenance**



**Model Number Configuration**

Display Module

PFXSP5 \* \* \* \* \* D  
(1) (2) (3) (4) (5)

(1) Size	(2) Wireless LAN	(3) Resolution	(4) Touch Panel	(5) Power Supply
8 19"	60 Yes	T TFT	C Projected Capacitive (5 points multi-touch)	D DC
7 15"	00 -	W Wide TFT	P Resistive Film (analog, 2 points multi-touch)	
6 12"			A Resistive Film (analog, single-touch)	
5 10"				
4 7"				

Coated models are also available as a customized product.



Box Module

PFXSP5B \* \*  
(6) (7)

\*Coated models are also available as a customized product.  
(Except for SP-5B00. It will be supported in the future.)

(6) Module Type	(7) Class
B Box	41 Open
	10 Power
	00 Standard

**Customer Service Hotline: 800.289.9266**

**Pro-face America**  
Phone: 734.477.0600  
www.profaceamerica.com

For more information

**ACCESS** www.profaceamerica.com

