

SP-5B40 Open Box Module

SP5000 SERIES



Features:

- Enhanced maintenance process.
- New modular design
- Change screen size with easy "snap on box module"
- Programmable with GP Pro EX v4.0 or greater or with BLUE software*
- Enhanced Connectivity: 2 Ethernet ports, 2 COM ports, 3 Type A USB ports, 1 mini USB

Performance Specifications

| | | | |
|--------------------|---|--|---|
| Models | SP-5B40 Open Box | | |
| Part Number | PFXSP5B40 | PFXSP5B40F0C | |
| Operating System | Windows® Embedded Standard 7 | | |
| CPU | Intel Atom 1.3GHZ Single core/Dual thread | | |
| Main Memory | DDR2 SDRAM 2G | | |
| Application Memory | CFast card, Free Space: About 5GB ** | | |
| Backup Memory | NVRAM 512KB | | |
| Interfaces | Serial | COM1 | RS-232C/422/485, Data Length: 7 or 8 bits Stop Bit: 1 or 2 bits Parity: None, odd, or even. Data Transmission Speed: 2,400(1,200)...115,200 bps Connector: D-Sub 9 pin (plug) |
| | | COM2 | Connector: D-Sub 9 pin (plug) Power Supply Voltage: 5Vdc ±5% Maximum Current Supplied: 500mA/port, 1A total for 3 ports Maximum Transmission Distance: 5m |
| | Ethernet | Standard: IEEE802.3i/IEEE802.3u/IEEE802.3ab, 10BASE-T/100BASE-TX/1000BASE-T Connector: Modular jack (RJ-45) x 2 | |
| | USB | Type A (V2.0) x3, Mini B (V2.0) x 1 | |
| | SD Card | SD Card Slot (Storage) x 1 SD/SDHC | |
| | CFast Card | CFast Card Slot (System) x 1, CFast Card Slot (Storage) x 1 | |
| | Video Output | DVI-D OUT Connector: DVI-D 24 pin (socket) x 1 | |
| | Audio Output | Speaker Output: 300mW (Rated Load: 8Ω, Frequency : 1kHz) LINE Output: Rated load: 10kΩ or more Connector: 2-piece terminal block (AUX) x 1 | |

**1: You can install the applications you have used. As for hardware specifications, the CPU is Intel® Atom™ E6x0 1.3GHz (Single core/Dual thread) and the main memory is 'DDR2 SDRAM 2GB'. For the other hardware specifications, refer to "SP5000 Series Open Box Reference Manual".
**Blue software to be released in 2015

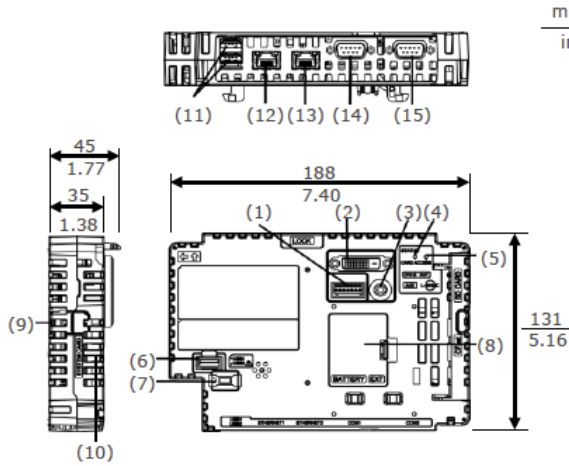
General Specifications

| | | |
|---|--|--------------|
| Models | SP-5B40 Open Box | |
| Part Number | PFXSP5B40 | PFXSP5B40F0C |
| Conformal Coating | - | Yes |
| Input Voltage | 12Vdc (Supply from Display Module) | |
| Power Consumption*2 | 35W (max), 22.5W or less (when power is not supplied to external devices) | |
| Surrounding Air Temperature | 0...60 °C [32...140 °F] | |
| Storage Temperature | - 20 to +60 °C (- 4 to +140 °F) | |
| Certifications | UL508, UL/c-UL, CSA C22.2 No142, CE, RoHS, GOST-R, KC | |
| Ratings | CSA C22.2No213, ANSI/ISA 12.12.01, EN61000-6-4, EN61000-6-2, Class 1 Div 2 Groups A, B, C and D | |
| Surrounding Air and Storage Humidity | 10%...90% RH (Non condensing, wet bulb temperature 39 °C [102.2 °F] or less) | |
| Dust | 0.1 mg/m3 (10-7 oz/ft3) or less (non-conductive levels) | |
| Pollution Degree | For use in Pollution Degree 2 environment | |
| Corrosive Gas | Free of corrosive gases | |
| Atmospheric Pressure (Operating Altitude) | 800...1,114 hPa (2,000 m [6,561 ft] or lower) | |
| Vibration Resistance | IEC/EN 61131-2 compliant, 5...9 Hz Single amplitude 3.5 mm (0.14 in.), 9...150 Hz Fixed acceleration: 9.8 m/s2 X, Y, Z directions for 10 cycles (approx. 100 min.) | |
| Shock Resistance | IEC/EN 61131-2 compliant, 147 m/s2, X, Y, Z directions for 3 times | |
| Electrostatic Discharge Immunity | Contact Discharge Method: 6 kV (IEC/EN 61000-4-2 Level 3) | |
| | IP65, Standard EN/IEC 61131-2 | |
| Weight | 0.9kg[1.98lb] or less | |
| External Dimensions | W188xH131xD45m[W7.4 x H5.16 x D1.77 in.] | |
| Warranty | Two (2) years | |

*2 Power consumption for Box Module only

External Dimensions

SP-5B40



- (1) Auxiliary Output/Speaker Output Interface (AUX) (2) DVI-D Output Interface (3) AUDIO Input Interface (LIN/MIC) (4) Status LED (5) Card Access LED (6) USB (Type A) Interface (7) USB (mini-B) Interface (8) Expansion Unit Interface Cover (EXT) (9) Storage Card Cover (10) System Card Cover (11) USB (Type A) Interface (12) Ethernet Interface (ETH1) (13) Ethernet Interface (ETH2) (14) Serial Interface (COM1) (15) Serial Interface (COM2)

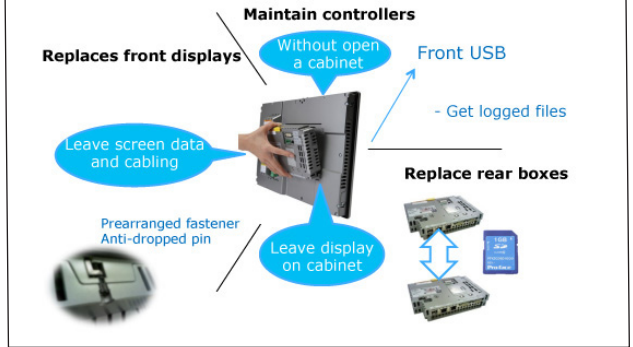
Ordering Information

| Type | Model Numbers | Description |
|---------------------------------|---------------|---|
| Open Box | PFXSP5B40 | Ethernet I/F x 2, COM I/F x 2, USB A I/F x 2, USB mini-B I/F, SD Card I/F x 2, AUX I/F, Expansion Unit I/F |
| Open Box with Conformal Coating | PFXSP5B-40F0C | Ethernet I/F x 2, COM I/F x 2, USB A I/F x 2, USB mini-B I/F, SD Card I/F x 2, AUX I/F, Expansion Unit I/F with conformal coating |

Options

| Part Number | Product Name | Description |
|---------------|-----------------------|--|
| PFXZCDCNAUX1 | AUX Connector | AUX connector required in case an external output is used (5 pcs/set). |
| PFXZCDS1GC61 | SD Memory Card (1 GB) | SD Memory Card (1 GB, SLC, Class 6) for System Card |
| PFXZCDS1GC162 | CFast Card | 16 GB |
| PFXZCDS1GC321 | CFast Card | 32 GB |

Modular Design and Easy Maintenance



Model Number Configuration - Combine a Box Module and Display Module

| <p style="text-align: center;">Box Module</p> <p style="font-size: 1.2em; font-weight: bold;">PFXSP5 <u>B</u> **</p> <p style="text-align: center;">(1) (2)</p> | <table border="1" style="width: 100%; border-collapse: collapse;"> <thead> <tr> <th colspan="2" style="text-align: center;">(1) Module Type</th> <th colspan="2" style="text-align: center;">(2) Class</th> </tr> </thead> <tbody> <tr> <td style="text-align: center;">B</td> <td style="text-align: center;">BOX</td> <td style="text-align: center;">40</td> <td style="text-align: center;">Open</td> </tr> <tr> <td></td> <td></td> <td style="text-align: center;">10</td> <td style="text-align: center;">Power</td> </tr> </tbody> </table> | (1) Module Type | | (2) Class | | B | BOX | 40 | Open | | | 10 | Power | | | | | | | | | | | | | | | | | | | | | | |
|--|--|-----------------|----------|-----------------|-------------------|------------------|-----|------------------|------|---|---------|----|-------|---|-----------------|---|----|---|---------|---|----------|---|-------------------|---|---------|--|--|--|--|---|--------|--|--|--|--|
| (1) Module Type | | (2) Class | | | | | | | | | | | | | | | | | | | | | | | | | | | | | | | | | |
| B | BOX | 40 | Open | | | | | | | | | | | | | | | | | | | | | | | | | | | | | | | | |
| | | 10 | Power | | | | | | | | | | | | | | | | | | | | | | | | | | | | | | | | |
| × | | | | | | | | | | | | | | | | | | | | | | | | | | | | | | | | | | | |
| <p style="text-align: center;">Display Module</p> <p style="font-size: 1.2em; font-weight: bold;">PFXSP5 * <u>00</u> * * <u>D</u></p> <p style="text-align: center;">(3) (4) (5) (6)</p> | <table border="1" style="width: 100%; border-collapse: collapse;"> <thead> <tr> <th colspan="2" style="text-align: center;">(3) Size</th> <th colspan="2" style="text-align: center;">(4) Resolution</th> <th colspan="2" style="text-align: center;">(5) Touch Panel</th> <th colspan="2" style="text-align: center;">(6) Power Supply</th> </tr> </thead> <tbody> <tr> <td style="text-align: center;">7</td> <td style="text-align: center;">15 inch</td> <td style="text-align: center;">T</td> <td style="text-align: center;">TFT</td> <td style="text-align: center;">P</td> <td style="text-align: center;">Premium (Multi)</td> <td rowspan="4" style="text-align: center;">D</td> <td rowspan="4" style="text-align: center;">DC</td> </tr> <tr> <td style="text-align: center;">6</td> <td style="text-align: center;">12 inch</td> <td style="text-align: center;">W</td> <td style="text-align: center;">Wide TFT</td> <td style="text-align: center;">A</td> <td style="text-align: center;">Advanced (Analog)</td> </tr> <tr> <td style="text-align: center;">5</td> <td style="text-align: center;">10 inch</td> <td></td> <td></td> <td></td> <td></td> </tr> <tr> <td style="text-align: center;">4</td> <td style="text-align: center;">7 inch</td> <td></td> <td></td> <td></td> <td></td> </tr> </tbody> </table> | (3) Size | | (4) Resolution | | (5) Touch Panel | | (6) Power Supply | | 7 | 15 inch | T | TFT | P | Premium (Multi) | D | DC | 6 | 12 inch | W | Wide TFT | A | Advanced (Analog) | 5 | 10 inch | | | | | 4 | 7 inch | | | | |
| (3) Size | | (4) Resolution | | (5) Touch Panel | | (6) Power Supply | | | | | | | | | | | | | | | | | | | | | | | | | | | | | |
| 7 | 15 inch | T | TFT | P | Premium (Multi) | D | DC | | | | | | | | | | | | | | | | | | | | | | | | | | | | |
| 6 | 12 inch | W | Wide TFT | A | Advanced (Analog) | | | | | | | | | | | | | | | | | | | | | | | | | | | | | | |
| 5 | 10 inch | | | | | | | | | | | | | | | | | | | | | | | | | | | | | | | | | | |
| 4 | 7 inch | | | | | | | | | | | | | | | | | | | | | | | | | | | | | | | | | | |

Pro-face America
 Phone: 734.477.0600
 Fax: 734.864.7347
 www.profaceamerica.com

Customer Service Hotline: 800.289.9266

For more information
ACCESS www.profaceamerica.com





California Proposition 65 Warning—Lead and Lead Compounds

Advertencia de la Proposición 65 de California—Plomo y compuestos de plomo

Avertissement concernant la Proposition 65 de Californie—Plomb et composés de plomb

⚠ WARNING: This product can expose you to chemicals including lead and lead compounds, which are known to the State of California to cause cancer and birth defects or other reproductive harm. For more information go to: www.P65Warnings.ca.gov.

⚠ ADVERTENCIA: Este producto puede exponerle a químicos incluyendo plomo y compuestos de plomo, que es (son) conocido(s) por el Estado de California como causante(s) de cáncer y defectos de nacimiento u otros daños reproductivos. Para mayor información, visite : www.P65Warnings.ca.gov.

⚠ AVERTISSEMENT: Ce produit peut vous exposer à des agents chimiques, y compris plomb et composés de plomb, identifiés par l'État de Californie comme pouvant causer le cancer et des malformations congénitales ou autres troubles de l'appareil reproducteur. Pour de plus amples informations, prière de consulter: www.P65Warnings.ca.gov.

All trademarks are the property of Schneider Electric SE, its subsidiaries, and affiliated companies.

Schneider Electric USA, Inc.
800 Federal Street
Andover, MA 01810 USA
888-778-2733
www.schneider-electric.us

Todas las marcas comerciales son propiedad de Schneider Electric SE, sus filiales y compañías afiliadas.

Importado en México por:
Schneider Electric México, S.A. de C.V.
Av. Ejercito Nacional No. 904
Col. Palmas, Polanco 11560 México, D.F.
55-5804-5000
www.schneider-electric.com.mx

Toutes les marques commerciales sont la propriété de Schneider Electric SE, ses filiales et compagnies affiliées.

Schneider Electric Canada, Inc.
5985 McLaughlin Road
Mississauga, ON L5R 1B8 Canada
800-565-6699
www.schneider-electric.ca