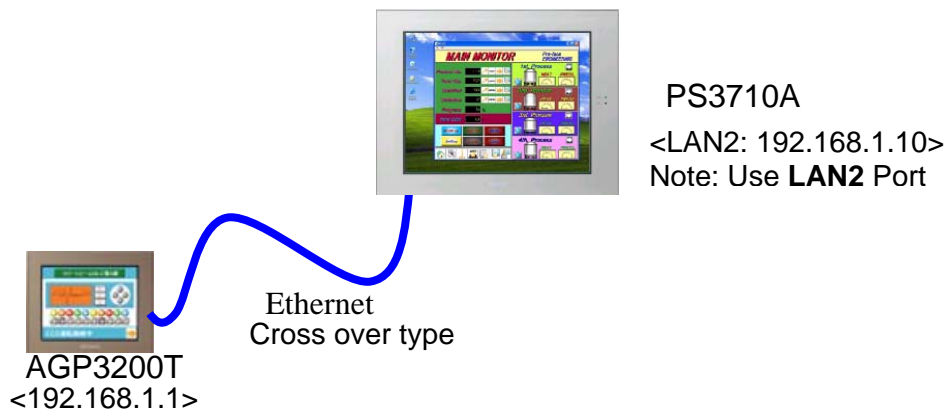


Index

System Structure of the PS3710A demo unit	Pg 1
How to set up the demo system	Pg 2
System Settings	Pg 2
Additional software on the PS3710A	Pg 2
Additional folders & files	Pg 3
Other changes to the PS3710A	Pg 4
WinGP Settings	Pg 4
WinGP demo screen contents	Pg 5
Sales message of each screen (Customer benefits)	
Application examples	
Using the File Manager	Pg 25
Frequently Asked Questions	Pg 26
Screen Navigation	Pg 28

System Structure of PS3710A demo unit

- 1) PS3710A
 - Part No.: PS3710A-512-XP40 (*This unit is not PS3710A-1G-XP40-WG. We have installed WinGP manually)
 - The recovery CD supplied with the unit is the one that ships from Digital, it does not have WinGP or any other additional software.
 - This unit ships to you pre-loaded with WinGP, Pro-Server EX, and a demo application.
- 2) GP3200T
 - AGP3200-T1-D24
 - You should already have this unit
 - To demonstrate the connectivity features you will need the AGP3200 demo application that compliments the PS3710A WinGP demo
 - You will also need a cross over Ethernet cable



* To start this demo system correctly, start the AGP3200T first, wait for complete demo start up, and then start WinGP.

How to set up the demo system

- 1) If you are using the AGP3200T, connect the crossover Ethernet cable between the AGP3200T and the PS3710A (LAN2 port)
- 2) Turn on the PS3710A (Do not start WinGP yet)
 - A) Select the "Pro-face America Login"
 - B) Pro-Server EX will automatically load, check for the icon in the system tray (by the clock)
- 3) Turn on AGP3200T
Wait for the main screen (Menu screen) to load on AGP3200T, and then you can continue. There will be an error message on the AGP3200 (REAA002: Failed to write the device set)
- 4) Double click WinGP on Desktop
The error message on the AGP3200 will go away
- 5) Now the setup is finished.

* If you don't follow this order, this demo system might not work correctly.

Notes:

1. WinGP starts in window mode (not full screen), this is intentional so it will be more clear that it is running in Windows.
2. In window mode you will have a scroll bar on the right, sometimes the menu button will be off the bottom of the screen and you will need to scroll down.

System Settings

- PS3710A

Computer name: PFA

Computer description: Demo unit for sales activities includes WinGP, Pro-Server EX, GP-Viewer EX, etc

Administrator password: No administrator password

Domain: No domain settings

Do NOT register on line with Microsoft

Account name: Pro-face America

Time settings: Eastern Time (GMT-05:00) (You may need to adjust for your local time zone)

IP Address: LAN 1: 192.168.1.11

LAN2: 192.168.1.10

- GP3200T

IP Address: 192.168.1.1 (you will need to set this up by yourself)

Additional software on the PS3710A

- 1) Adobe Reader 8.1.0
- 2) GP-Pro EX V2.10

- Editor
S/N: 35821030005
Key code: 1000-2102-0498
- Transfer Tool
- Project converter
- GP-Viewer EX
Key code for WinGP + GP-Viewer EX (server):7979-0394-9694
- WinGP
Key code: 7060-3803-0215

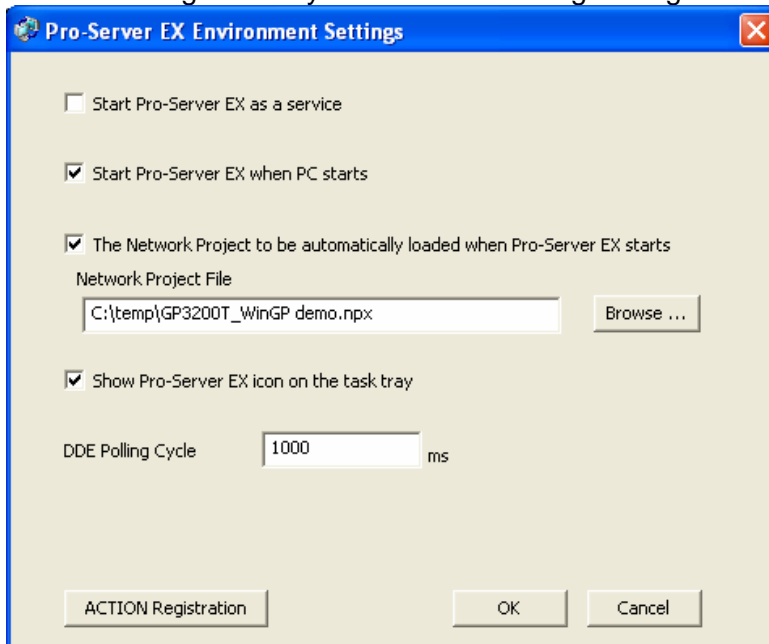
These key codes and serial numbers are to be used with this demo only

- 3) Pro-Server EX V1.10 + Patch (Pro-Server EX V1.21)
- Developer & Runtime
S/N: 35548630038
Key code (Developer): 9214-7160ED-6675
Key code (Runtime): 5414-8347RT-6223

These key codes and serial numbers are to be used with this demo only

* Pro-Server EX is registered to start-up.

To change this setting, execute Pro-Studio EX and select "Setting" -> "Pro-Server EX Environmental Setting". Then you can see following settings.



Additional folders & files

- 1) PS3710A related Manual <C:\temp\PS3710A>
- Data sheet
 - Hardware Manual
 - Reference Manual

- Installation Guide
 - Cutout Dimension
 - API Reference Manual
- 2) WinGP Project file & CF-card folder < C:\temp\WinGP Sales Demo v210>
 - WinGP Sales Demo v210.prx
 - WinGP Sales Demo v210
 - * You need "GP-Pro EX V2.10" to edit this project
 - 3) GP3200T Project file < C:\temp>
 - GP3200T_Demo20090928.prx
 - * You need "GP-Pro EX V2.10" to edit this project
 - 4) Pro-Server EX Network Project file < C:\temp>
 - GP3200T_WinGP demo.npx
 - * You need "Pro-Server EX V1.20" to edit this project

Other changes

- 1) On-Screen Keyboard
 - Added keyboard tool on Desktop from <"Start" -> "Programs" -> "Accessories" -> "Accessibility" -> "On-Screen Keyboard">
- 2) System Monitor Property
 - Added System Monitor Property Tool on Desktop from <"Control Panel"-> "System Monitor Property">

WinGP Settings

System folder settings

- 1) CF Card
 - C:\Program Files\Pro-face\WinGP\Temp\CF
- 2) SRAM
 - C:\Program Files\Pro-face\WinGP\Temp\SRAM

WinGP Demo Screen Contents

Company Profile

<p>Screen 99 – Introduction Brand Awareness</p> <p>Increase Brand Awareness</p> <p>Pro-face has the largest market share of proprietary HMIs globally</p>																									
<p>Screen 100 – Introduction of Pro-face history</p> <p>We have a long history in North America; we are not new to the US, Canada or Mexico.</p> <p>We have sold quite a few units throughout North America.</p>																									
<p>Screen 101 – Pro-face #1 Market Share</p> <p>We are the No. 1 HMI player in the world. More than Rockwell, more than Siemens globally.</p> <p>This data comes from 2007 IMS research which is published based on 2006 sales results.</p>	<table border="1"> <caption>Worldwide Touch Screen Operator Panels Market Share (Amount) - 2007</caption> <thead> <tr> <th>Company</th> <th>Market Share (%)</th> </tr> </thead> <tbody> <tr> <td>Pro-face</td> <td>20%</td> </tr> <tr> <td>Rockwell</td> <td>12.6%</td> </tr> <tr> <td>Siemens</td> <td>11.9%</td> </tr> <tr> <td>Omron</td> <td>7.4%</td> </tr> <tr> <td>Hako</td> <td>5.4%</td> </tr> <tr> <td>GE Fanuc</td> <td>5.4%</td> </tr> <tr> <td>Mitsubishi</td> <td>3.0%</td> </tr> <tr> <td>Schneider</td> <td>2.9%</td> </tr> <tr> <td>Fuji Electric</td> <td>2.4%</td> </tr> <tr> <td>B & R</td> <td>2.4%</td> </tr> <tr> <td>Others</td> <td>2.0%</td> </tr> </tbody> </table>	Company	Market Share (%)	Pro-face	20%	Rockwell	12.6%	Siemens	11.9%	Omron	7.4%	Hako	5.4%	GE Fanuc	5.4%	Mitsubishi	3.0%	Schneider	2.9%	Fuji Electric	2.4%	B & R	2.4%	Others	2.0%
Company	Market Share (%)																								
Pro-face	20%																								
Rockwell	12.6%																								
Siemens	11.9%																								
Omron	7.4%																								
Hako	5.4%																								
GE Fanuc	5.4%																								
Mitsubishi	3.0%																								
Schneider	2.9%																								
Fuji Electric	2.4%																								
B & R	2.4%																								
Others	2.0%																								

<p>Screen 105 – Worldwide Sales & Support offices</p> <p>Pro-face has sales & support offices all over the world. When you export your equipment, we can support it.</p> <p>And if you need products in the country you have shipped your machine to, we can provide them from our overseas offices.</p>	
<p>Screen 106 – Worldwide Support Services</p> <p>If exporting product is part of your business, Pro-face offers the same services, from sales and support to training and repair wherever you buy a Pro-face HMI.</p> <p>Wherever you deploy a Pro-face panel you have local replacement parts and support in the local language in place.</p> <p>PFA has customer support via email or Phone (8am to 6pm Eastern M-F)</p> <p>Repair in the US is usually 5 days or less with online tracking</p>	
<p>Note: To get back to the above 5 screens, you must restart the demo. You can use the “Exit WinGP” button on the main menu or the “Restart WinGP” button under Applications – Special Switches</p>	
<p>Screen 902– Main Menu V2.10</p> <p>Gives access to the 6 major portions of the Sales Demo:</p> <p>Note that many of the GP-Pro EX features are found under the “Applications” button</p> <p>From here you can launch Adobe Acrobat and view the Data Sheet, Hardware manual and Reference Manual (emphasize that these are external applications that can be started from WinGP)</p> <p>A button is provided if you want to exit WinGP</p>	

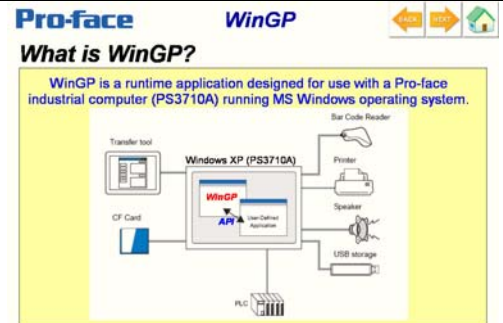
“WinGP” Button on Main Menu

Screen 2002 – WinGP

WinGP gives the PS3710A the ability to run HMI projects developed in GP-Pro EX on a Microsoft Windows XP operating system.

Today Pro-face America only supports WinGP on a PS3710A running XP. Other configurations are possible.

The next screens will highlight the various connectivity options.



Screen 2000 – WinGP, what can connect?

Connectivity you would expect

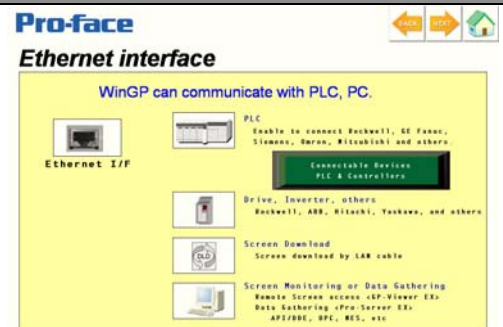
- Ethernet (see screen 2001 below)
- Serial : PLCs, Temperature Controllers, Drives (By Modbus RTU and other protocols), screen downloads
- USB : Memory stick (logging), printers, bar code readers, screen downloads
- Compact flash: Images, logging, screen downloads



Screen 2001 – WinGP Ethernet Interface

By using Ethernet WinGP can:

- Communicate with PLCs
- Communicate with Drives (via ModbusTCP or other protocols)
- Receive screen downloads from GP-Pro EX
- Use Remote Connection Tools
 - Pro-Server EX
 - GP-Viewer EX



Screen 237 – WinGP Connectable Device List

By touching “Connectable Devices, PLCs and Controllers” button you can see a list of drivers (serial and Ethernet) available in WinGP

This list contains drivers that will be added through the end of December, 2007. Depending on when you are using this demo some of the drivers may not be available yet or more may be available, please check the website for the most current list of drivers (http://www.pro-face.com/plc_connect/)

See the FAQ Section for Drivers not supported by WinGP



<p>Screen 236 – Rockwell Native Tag (L5K import)</p> <p>By touching “Rockwell Native-Tag, Import Utility” you can see a high level description of importing “Native Tags” from the RSLogix5000 software</p>	
<p>Screen 232 – Serial Interface</p> <p>By using Serial ports WinGP can:</p> <ul style="list-style-type: none"> • Communicate with PLCs • Communicate with Drives (via Modbus RTU or other protocols). Several drives have been tested by using the Modbus RTU driver <ul style="list-style-type: none"> ○ ABB, Rockwell, Hitachi, Yaskawa have passed the evaluation test (some models) ○ For more details, please check Otasuke Library for models. <p>Note: Download via serial or modem is NOT supported on WinGP</p> <p>Rockwell PLC Native Tag Drivers are supported; Tag Import Utility is also supported (L5K file import). For more detailed info, please contact Pro-face support</p> <p>For the latest updates visit www.pro-face.com/otasuke</p>	
<p>Screen 241 – Simultaneous Multi-Protocol</p> <p>WinGP can communicate with up to 4 different protocols simultaneously</p> <p>Note: this does not mean 4 PLCs as you can use up to 32 PLCs for some protocols</p> <p>Note: The 3.8” & 5.7” AGP3000s can use up to 2 drivers, and others are up to 4 drivers.</p>	

<p>Screen 231 – USB Interface</p> <p>By using USB WinGP can:</p> <ul style="list-style-type: none"> • Communicate with Barcode Readers • Printers • USB Memory (3rd party devices are supported) (can also be used as a local drive): <ul style="list-style-type: none"> ○ Data Logging ○ Recipe Data ○ Trend Data ○ Alarm Logs ○ Movies ○ JPEGs • USB Card readers (for CF card only, not SD, or Sony Memory stick or others) • Download from GP-Pro EX using CA3-USBCB-01 	
<p>Screen 233 – Other Interfaces</p> <p>CF card can be used for (can also be used as a local drive):</p> <ul style="list-style-type: none"> • Data Logging • Recipe Data • Trend Data • Alarm Logs • Movies • JPEGs <p>Sound output can be used to:</p> <ul style="list-style-type: none"> • Announce Alarms • Give operators instructions 	
<p>Screen 2003 – WinGP What are the Benefits?</p> <p>Many customers have their own applications, WinGP can communicate with them usually without big changes</p> <p>WinGP can share information with other 3rd party applications Visual Basic, Visual C#, Visual C++, and C#. (mention all, this detail matters)</p> <p>This can allow users to get data in and out of WinGP to their applications, when they need it.</p>	

<p>Screen 2005 – WinGP Application Example 1</p> <p>The PC can be used for other tasks, for example Motion Control, or Vision Software. WinGP can share data with these applications and be the Operator Interface when needed.</p>	
<p>Screen 2006 – WinGP Application Example 2</p> <p>WinGP can collect data from several AGPs or even PLCs directly, it can send the data to an upper level system, acting as a “Gateway” or “data concentrator”</p>	
<p>“GP-Pro EX” Button on Main Menu</p>	
<p>Screen 300 – GP-Pro EX Overview</p> <p>The screen list, dock able workspaces and function windows and tab based screen selection make for a very easy to use editor interface.</p> <p>The 6 step main toolbar guides you through (1) System Settings, (2) Screen Editing, (3) Preview, (4) Simulation (5) Download and optional (6) Ladder monitoring.</p> <p>Note: that the preview function shows a static image.</p> <p>Note: This is an overview of GP-Pro EX not WinGP</p>	
<p>Screen 301 – GP-Pro EX Workspace</p> <p>The screen thumbnails can be double clicked to open individual screens for editing (Screen List)</p> <p>Address Mapping Drag any register from the address list onto an object to easily add or replace an address. Red items in the list indicate the address is currently being used in the application.</p>	

<p>Screen 302 – GP-Pro EX Helpful Tool</p> <p>Auto Document The images in this document were created by using our Project / Print function, when send to Rich Text File (RTF) all project data including all screen shots can be edited in MS Word or similar text editors. This feature makes it very easy to create comprehensive operation and maintenance manuals. Any item (like ladder logic or cross reference lists) can be printed to printer instead of a file as well.</p> <p>The Helpful Tools section 3 screens, use the Next and Prev buttons to navigate. Newly added tools are:</p> <p>Parts Tool box (V2.0) and Color picker tool. These make it easy to select & place parts & change colors visually.</p>	
<p>Screen 303 – GP-Pro EX Efficient Tool</p> <p>Templates: an OEM can make templates for the most comprehensive machine and register any of the parts in that project as a template for use on similar machines saving time and providing a consistent look.</p> <p>The Header & Footer function help quickly create title and menu bars with great ease of use to provide a consistent look across all project screens.</p> <p>A “Package” (library in GP-Pro C03) can be used to store a group of objects in order to reuse it in different projects. These “packages” show up on the toolbar as an icon with tooltip. (also in workspace in V2.1)</p>	
<p>Screen 521– GP-Pro EX Address Mapping</p> <p>The Address Mapping window gives you a graphical representation of what PLC or Internal Memory addresses you have used in your Pro-face HMI application by highlighting used addresses in Red.</p> <p>View Integer or Discrete registers and simply drag any address from the Mapping window onto an object to assign its address without the possibility of making a typing mistake.</p> <p>This tool is a great addition to the GP-Pro EX Cross Reference function that is also available for your use.</p> <p>You can also drag and drop colors onto objects and variables from logic to the screen</p>	

<p>Screen 310 – GP-Pro EX Drawing Objects</p> <p>The table part allows you to easily create a table like grid display without having to draw multiple lines.</p> <p>Note: this part is not linked to data in any way, you can use it to create individual data displays in each of the table's "cells"</p>	
<p>Screen 311 – GP-Pro EX Image</p> <p>The Image File screen shows that images can be included in the project in several ways:</p> <ol style="list-style-type: none"> 1) Image Placement, an image is selected and placed on a screen directly without assigning a number to it. A transparent color can now be selected when using Image Placement. <p>Image Registration, Images are assigned a number and can be stored in either Internal Memory (project memory) or on a CF Card folder.</p> <p>New image features include:</p> <ul style="list-style-type: none"> • Pasting directly from Windows clipboard onto screen • Transparent RGB color selection by eyedropper tool 	
<p>Screen 412 – Scripting</p> <p>Powerful D-Script can be used on a single screen or as a global script, regardless of the screen that is being displayed</p> <p>Create your own functions by using math, loops and if/else statements.</p>	
<p>Screen 413 – More Scripting</p> <p>D-Script has powerful functionality</p> <ul style="list-style-type: none"> • Drawing objects on the screen • Create your own ASCII communications • Use scripting to manage files directly 	

Screen 553– GP-Pro EX Simulation

Simulate the screen on the PC, PLC values can be set by using the built-in tool.
 Logic Simulation is now supported.
 (Note: WinGP does not support logic)

Save development time by testing without downloading.
 Continue developing even when you don't have the PLC or the AGP nearby

Pro-face GP-Pro EX

Simulation easy debug on your Laptop

No need to download.
 Debug without PLC.

Reduce development time

Screen 554– Multi-Platform

GP-Pro EX supports more than 40 units

- From 3.8" to 15" displays
- With or without control
- With or without Ethernet
- With or without Multi-media
- Dedicated HMI or WinGP on Windows based IPC

Click on the button to see the supported protocols

Pro-face GP-Pro EX

Multi-platform HMI drawing software

Create WinGP & AGP3000 HMI applications with one software package.

There are some differentiation between them	
WinGP	GP3000
Multi Win-GP can be play & connect simultaneously	✗ GP3000 only
ADP Logic	✗
Programming Memory	16 MB 8 MB
Backup Memory (RAM)	8 MB 32 KB
Compatible to Pro-Series E2	✗
Pro-Series E2-RTI Available	✗
Start Windows Application by Scripter Variable	✗
Error Log comments added	✗
Picture registration using 8-color	✗
Event Through Feature	✗

Note: Supported Drivers are different.

CONNECT TO EXISTING PLC & CONTROLLERS

“Applications” Button on Main Menu

Screen 801 – Application Example

Boiler flow application
 Several nice looking tank parts, pipes, valves and 7 segment numeric displays.

Notice the buttons at the bottom of the screen, you may need to scroll down if running WinGP in “window” mode

Pro-face

TANK 1, TANK 2, TANK 3, TANK 4, TANK 5

STATUS, PC1, PC2, PC3

Screen 801 – Application Example + Parts

This screen displays some of our pre made Switch and Lamp parts including 2 state pumps, motors, blowers, valves and tanks.

Symbolic parts are a great way to convey a message that is understood in any language. Symbolic Parts & Sign Images (Warning) can be used on lamps or switches.

It also shows how you can make you own switches using your own images for up to 16 button states + an interlock state.

(Touch any object to change states)

Pro-face

PARTS LIBRARY

More than 3,000 parts are available

3D Parts, Actuator Parts, Your Own Parts

Symbolic Parts, Symbol Parts

Screen 801 – Application Example + Symbol Library

Several graphic images are shown and many more are available.



Screen 801 – Application Example + Password Protection

Security now supports user ID, password and level.
 Max 64 users can be registered. Passwords and User IDs can be up to 8 (alpha)numeric characters

To enter use this password:
 User ID : Xycom
 Password : ABCDEFG
 * User ID and Password are case sensitive.

You can delete, add and change user ID & password by using the offline-menu.

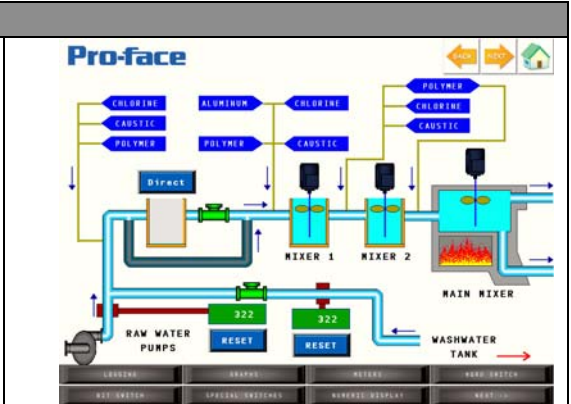


<p>Screen 801 – Application Example + Multi Language GP3000 can show English, Spanish, French, Chinese, Korean, Japanese, etc.</p> <p>Notice the font changes</p> <p>Alarm Message, Lamp, Text, etc are available to change languages.</p>	
<p>Screen 801 – Application Example + Multi Function Switch</p> <p>Tired of writing ladder logic, scripts or even stacking buttons on top of each other to perform a variety of functions to for example initialize a new product run?</p> <p>The Multi Function switch allows you to combine up to 16 functions in a single switch. Change discrete and integer values and move to the next screen or prompt the operator for input with the push of one button.</p> <p>Fast and Easy to edit: related functions are all found in one object that does not leave you guessing as to where certain functions are triggered from (script or logic).</p>	
<p>Screen 801 – Application Example + Alarm</p> <p>Log, History, Active Alarm</p> <p>Use “Alarm Control” switch to bring up an alarm simulation</p> <p>Touch any Alarm Message in this screen to display a Video Sub-display. (for example: material load tuition video)</p> <p>New: You can show up to 8 devices (registers) for each Alarm. This function is very good to analyze error cause & affect by using other devices.</p>	
<p>Screen 801 – Application Example + Trend</p> <p>Normal or Historical Trend Graph.</p> <p>You can show cursor and you can see the device and log time of the cursor point.</p> <p>Time display, zoom-in and out are also available.</p> <p>Must touch “History” button to pause trend, then you can use the zoom and cursor feature, touching the selected sample time & date display allows you to search for a specific sample</p>	

Screen 802 – Application Example 2

Liquid plant flow sample

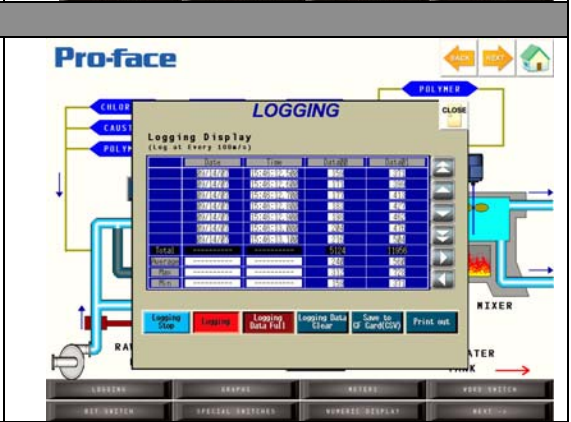
Again use the buttons on the bottom of the screen to see more GP-Pro EX features



Screen 802 – Application Example 2 + Logging

You can log every 100m/s, trigger, scheduled time. Logging data can be saved as a CSV file.

This demo is designed to work with a local folder on the hard drive. This function will also work with USB memory

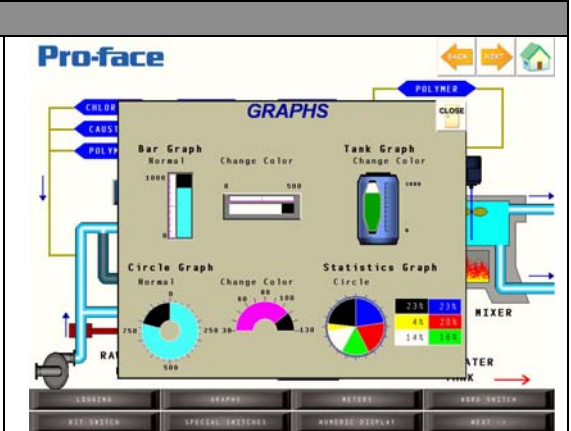


Screen 802 – Application Example 2 + Graph

Several Bar, Pie, Tank Graphs are shown

Use pre-built objects or create your own

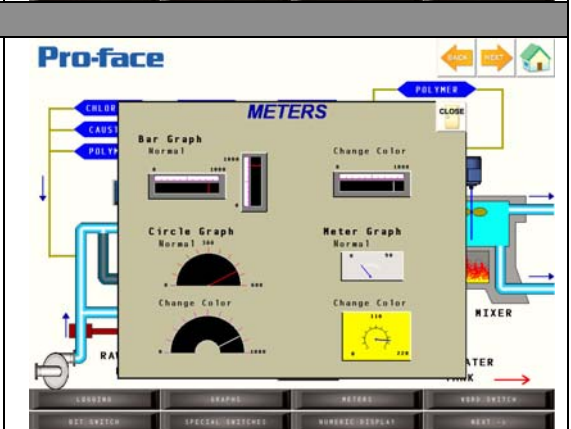
You can change the color of the graphs by value.



Screen 802 – Application Example 2 + Meter

Several Bar, Pie, Meters are shown.

New: You can add text to the outer edges of the meter and it won't be over written

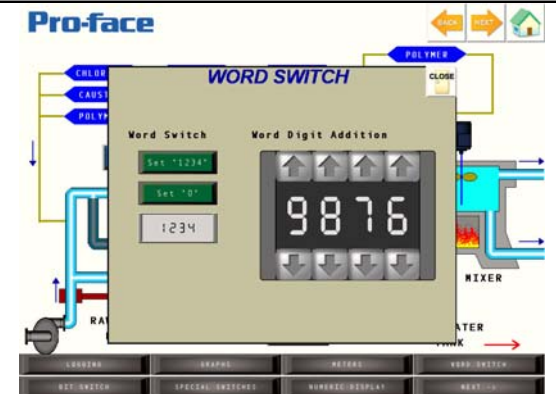


Screen 802 – Application Example 2 + Word Switch

This screen shows various methods of using word switches

The word switches on the left demonstrate directly entering 1234 or 0 into a word

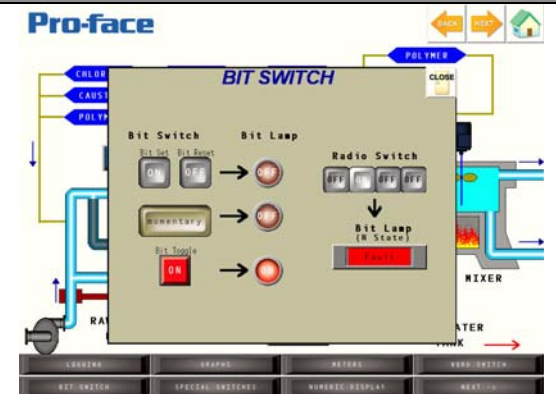
The example on the right demonstrates that you can modify any digit position within the word



Screen 802 – Application Example 2 + Bit Switch

Several examples of bit switches are shown

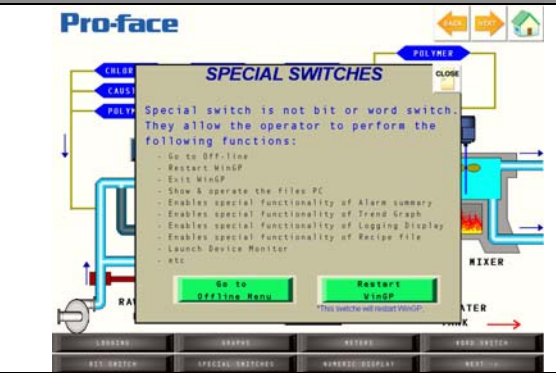
Bit switches can be set (1), reset (0), momentary (1 when pressed, 0 when released), invert (toggle) or compared to another address



Screen 802 – Application Example 2 + Special Switch

Change screen, Open window, Go to Offline, Restart, etc

Touch the switches to go to offline or to restart WinGP.



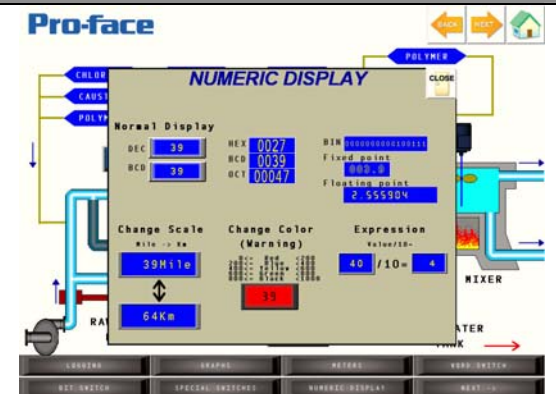
Screen 802 – Application Example 2 + Numeric Display

Show word data by numeric data displays

New font : Auto-size font (max characters within the size of the object)

You can calculate the value and add units by Numeric Display parts,

For example : value 1 + value 2 = value3
value1 mile



<p>Screen 802 – Application Example 2 + Image file Display</p> <p>Show JPEG files</p> <p>Show images to help operators understand details</p> <p>Remember “A picture is worth a 1000 words”</p>	
<p>Screen 802 – Application Example 2 + Recipe</p> <p>Recipe file can make two types of files</p> <p>Use of CSV recipes has its main benefit in that it stores its recipes files in CSV format and is easy to edit in software like MS Excel.</p> <p>Recipes can be used for any kind of product setup or machine configuration settings, this may not be obvious to users that are not in the food industry, remember to describe this functionality.</p> <p>New: Float data type is supported</p>	
<p>Screen 802 – Application Example 2 + Security Lock</p> <p>Before the interlock value is set, the operator can not see the switch</p> <p>On delay: In this example the interlock must be set first then the user must hold the switch for 3 seconds before the bit is set</p> <p>Off delay: In this example the interlock must be set first then when the user presses the button the bit will come on and 3 seconds after the user releases the button it will turn off</p> <p>Double touch: The user must touch the button again within a selectable time before the function will take place</p>	

Screen 802 – Application Example 2 + Message Display

You can show text file contents. Maintaining the content is very easy, just change txt file.

New: 256 state lamps can act as a 256 message display

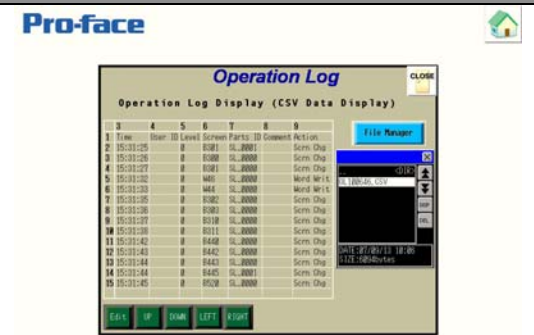


Screen 802 – Application Example 2 + Operation Log

Save operation log as a CSV file.

You can create the CSV file by using the “Logging” button on the previous screen, start the log and then “Save to CF card (CSV)”. This will create a new SAMPXX folder. Choose this folder with the file manager to open.

This demo is designed to work with a local folder on the hard drive. This function will also work with USB memory

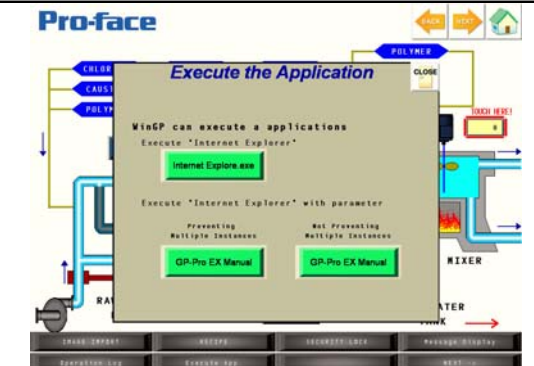


Screen 802 – Application Example 2 + Execute Application

By using switches within WinGP, you can execute external applications on the PC.

Examples here are

- Launch Internet Explorer
- Launch PDF viewer for manuals



“RAS Functions” Button on Main Menu

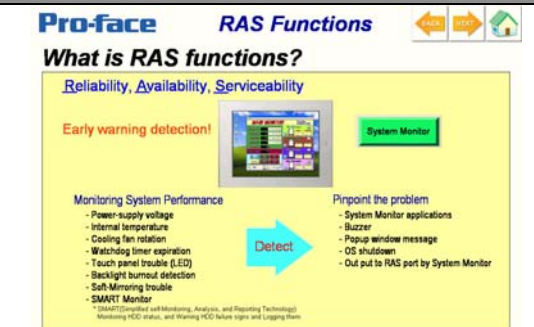
Screen 2100 – What is RAS?

RAS – Reliability, Availability, Serviceability

Early warning detection!

PC health monitoring application

Remotely access the status information



<p>Screen 2100 (window 200) – RAS System Monitor</p> <p>System Monitor is the application that enables the RAS functions</p> <p>Touch the “System Monitor” button to launch the application.</p>	
<p>Screen 2101 – RAS Benefits</p> <p>By remotely accessing the status of the PS3710A, you can have an “Early Warning” system that something is going wrong. This allows you to fix the problem <u>before</u> a failure occurs.</p> <p>Imagine if someone put a copy of a manual back into the cabinet, but they blocked the fan filter. This would cause a heat rise in the computer. Notified by the RAS functions, the blockage could be removed before any lasting problems happen.</p>	
<p>Screen 2102 – RAS Example 1</p> <p>RAS can work “Stand Alone”, by this we mean it doesn’t have to be accessed remotely to be effective.</p> <p>It can be a very effective tool running locally and displaying status directly on the PS3710A that it is monitoring.</p>	
<p>Screen 2103 – RAS Example 2</p> <p>This example shows a point-to-point connection</p> <p>By remotely connecting to a PC using the system monitor Server/Client you can receive status in a control room, or in an office environment.</p>	

<p>Screen 2104 – RAS Example 3</p> <p>This example show a networked connection</p> <p>Connect to multiple PS3710As simultaneously and see the status of each on a PC. The PC could be in a central location or in a control room or in an office</p>	
<p>Screen 2108 – RAS Remote Shutdown</p> <p>By using this feature the PS3710A units can be shutdown when they are not needed.</p> <p>This can</p> <ul style="list-style-type: none"> • save power (electricity costs) • improve security • extend the life of the PC 	
<p>“Pro-Server EX” Button on Main Menu</p>	
<p>Screen 560 – Pro-Server EX what is it?</p> <p>Pro-Server EX is a “Data Collection and Sharing” software package.</p> <p>Pro-Server retrieves data from AGP’s over an Ethernet network to either process it for logging, emails, recipe handling or to share it with other PC software packages.</p> <p>There is no tag limit in Pro-Server EX and one runtime license can be used to poll all AGP on the plant floor.</p>	
<p>Screen 561 – Pro-Server EX Benefits</p> <p>Use Pro-Server EX to collect data and share the data with applications such as Access Databases, ODBC Databases, and Excel Sheets for storage or to automatically generate reports.</p> <p>Several Actions in Pro-Server EX help you quickly setup these data sharing connections and the way (trigger, time, event base) that you want to execute these functions.</p> <p>This <u>low cost gateway between Office and Plant environments</u> is a very powerful addition to the AGP with GP-Pro EX</p>	

New: OPC Server and MES Actions are available in Pro-Server EX V1.20 and above

Screen 2110 – Pro-Server EX Benefits

This screen shows some of the Benefits and connectivity of Pro-Server EX.

To fully demonstrate this functionality you will need to connect your AGP3200T and have the supplied demo application loaded to it. When connected via an Ethernet connection (via crossover cable or via a hub/switch) the excel spread sheet represented on this page will update with values from the AGP3200T.

On the AGP3200T main menu, touch the “Temp. Monitor App.” Button. Once on this screen you can change the Room no. 1, 2 or 3 temperature and see it reflected on the excel sheet represented in the WinGP application.

Some of the benefits of Pro-Server EX include:

- Easy setup – reduces development time
- Cost effective – inexpensive data collection
- Send data where you need it – no need to walk to the machine, collect data on a clipboard and walk back to your office, then type it into Excel.

Pro-face Pro-Server EX

What are the Pro-Server EX Benefits?

Easily link to Excel

Terminal A	Terminal B	1F	2F	3F	4F	5F	6F
Room1	Room1	##	Room1				
Room2	Room2	##	Room2				
Room3	Room3	##	Room3				

Easy Set Up & Maintenance

- Just select the AGP or WinGP you want to connect with and specify the Excel file
- Simple set up - Copy and Paste commands from Pro-Server EX into Excel

Get PLC/Controller values into Excel from an AGP3000
*Please open & Operate "Temp. Monitor App." screen on AGP3200T.

GP3200T

- Switch / Lamp 1
- Mixing flow App.
- Switch / Lamp 2
- Error Monitor App.
- Data Display
- Engine Monitor App.
- Message Display
- Temp. Monitor App.**
- Logging
- Indicator App.
- Alarm
- Temp. Control App.

Temp. Monitor

room no.1: 80.0 °C

room no.2: 75.0 °C

room no.3: 70.0 °C

- 6F
- 5F
- 4F
- 3F
- 2F
- 1F

Screen 2111 – Pro-Server EX Benefits

Pro-server EX allows data sharing between an AGP and WinGP

By using this feature an end user can benefit by sharing data from one PLC manufacturer and other brands without the need for expensive external converters.

This can be demonstrated by using the AGP32000T and the Error Monitor screen. This shows data sharing between the AGP3200T and the WinGP PS3710A

Pro-face Pro-Server EX

What are the Pro-Server EX Benefits?

Exchange data between operator interfaces (AGP, WinGP)

Read the values from Terminal A

Write the values to Terminal A

Clear the Alarms

"Please open & Operate "Error Monitor App." screen on AGP3200T."

Easy Data Sharing

- Peer-to-Peer Data Sharing
- Share data values between AGP or WinGP operator interfaces.
- Share data between dissimilar PLC vendors or product families (AB ControlLogix & SLC500)

Share the controller's value each other

Screen 2112 – Pro-Server EX Example 1

This example shows data sharing

Emphasize that no extra communications modules are needed

See additional examples of Pro-Server EX included in the Zip file of this manual

Pro-face Pro-Server EX

Error Monitor

A B

STOP STOP

9 Units 60 Units

Error No. 23
Defect on MachineB

Error1 Error2 Error3

reset

Screen 2113 – Pro-server EX Example 2

This example shows a total system solution

- Data sharing between AGPs or WinGP units
- Data collection using Pro-Server EX
 - Via an industrial node PC or Commercial PC
 - Or via a PS3710 with WinGP and Pro-Server EX
- Send data up to the enterprise via OPC, ODBC, API or other methods

Pro-face Pro-Server EX

Application Example #2

Put it all together for an enterprise solution!

All process data can be collected into a centralized back office system, reducing the cost of unnecessary SCADA packages

Share the controller's value each other

Barcode AGP AGP AGP WinGP Printer

Allen Bradley GE Fanuc Schneider Siemens

MES, CRM, etc.
SQL, ACCESS, Oracle, etc.
SCADA

OPC, ODBC, API, etc

Pro-Server EX Pro-Server EX

Box-PC Ethernet Ethernet

PS3710A(WinGP) AGP AGP AGP PS3710A(WinGP)

Allen Bradley Omron Schneider Siemens GE Fanuc

Pro-face, 750 North Maple Road, Saline, MI 48176, phone 734-429-4971, fax 734-429-1010, www.profaceamerica.com

“GP-Viewer EX” Button on Main Menu

Screen 563 – GP-Viewer EX

By using GP-Viewer EX you can see the AGP3000 screen on your PC remotely.

Customer needs to purchase a license for each server (AGP3000).

The client (PC) is free, but you need to install GP-Viewer EX from GP-Pro EX CD or download it from the Otasuke Pro web site.

1 server (AGP3000) can publish screen data to 3 clients (PC) at once.

1 Client (PC) can see 4 different servers (AGP3000) at once.

The client PC can operate screen change, switches, value changes. Functionality depends on setup.

Security can be enabled for the remote client PC too.

If the AGP3200T is connected, you can press the “Run GP-Viewer EX button and see the AGP screens. You may need to reduce or minimize windows to see the GP-Viewer window

Screen 567 – GP-Viewer

GP-Viewer EX is a client/server application.

The server runs on the Operator interface

The client runs on the PC

<p>Screen 564 – GP-Viewer EX Benefits</p> <p>Benefit for the Machine Builder (OEM), reduce travel time and cost. Troubleshoot symptoms without traveling to the customer site</p> <p>Benefits for the End User</p> <ul style="list-style-type: none"> • Maintenance personnel can understand what is needed to get the machine running quickly. If they are notified of the type of fault that stopped a machine, they can arrive with the correct tools or materials to get the machine running quickly • Reduce downtime 	<p>Pro-face GP-Viewer EX</p> <p>What are the GP-Viewer EX Benefits?</p> <p>Save Time! GP-Viewer EX uses your existing HMI application screens Fast, simple set-up!</p> <p>For Machine Builder Reduce travel time & costs -Remotely troubleshoot symptoms without traveling to customer's site.</p> <p>For End-User Correct problems faster to reduce downtime -Maintenance can understand the issue and arrive at the machine, with tools and materials, ready to make repairs. -How would you benefit by resolving production issues without walking out to the machine?</p>
<p>Screen 565 – GP-Viewer EX Example 1</p> <p>End users can remotely monitor various status and conditions from a central location. This reduces the need to walk to several HMI locations in a large installation.</p> <p>Machine builders can offer improved technical support and value added services for their end customer</p>	<p>Pro-face GP-Viewer EX</p> <p>Application Example #1 Monitor multiple locations from a single computer</p> <p>End-User</p> <ol style="list-style-type: none"> 1) Compare production cells for consistency 2) Check machine condition to help maintenance scheduling 3) Assist in system start-up & shut down procedures <p>Machine builder Value added services</p> <ol style="list-style-type: none"> 1) Provide a higher level of technical support 2) Remotely train machine operators 3) Adjust machine settings
<p>Screen 566 – GP-Viewer EX Example 2</p> <p>GP-Viewer EX can eliminate the need to put the user in harms way. If the operator does not need to be in a hazardous location, give them a way to resolve issues without being at risk.</p> <p>Reduce exposure to chemical, environmental and biological liabilities</p>	<p>Pro-face GP-Viewer EX</p> <p>Application Example #2 Improve Safety of Operations</p> <p>Operate from a safe environment Reduce Risk Reduce entry into dangerous or difficult areas</p> <p>Reduce Exposure Avoid Contaminants: 1) Chemical 2) Environmental 3) Biological</p> <p>Reduce Liability</p>

Using the File Manager

On any File Manager screen click navigate the folders by using the up and down arrows. Folders are shown as <DIR>; to display the contents of a folder use the “DISP” or “=” button (depending on the file manager used)

Different files (Log, Recipes, etc) are stored in different default folders and under default names. Note that files that were copied without using GP-Pro EX (by using a card reader with Windows Explorer for example) do not have to follow any predefined naming format.

If you are trying to locate log data or event recorder data keep in mind that you have to save this data at least once using the applicable screen in the demo application, if for example the “ALARM” folder does not show up in your File Manager you will have to go to any of the alarm screens first to save an Alarm Log file. This will automatically create the folder if needed.

Fig. 2a



Fig. 2b



Fig. 2c



Figures 2a through 2c show some of the different available file managers, note that the file manager in Fig. 2c can be used to transfer data between USB Memory and CF Card folders, both File Managers displayed in Fig. 2a and 2c can be used to delete files. (See Key Features, Connect Devices, CF <-> USB). Note, the files and folders may have different folders available when run on WinGP or AGP units.

File locations used in the demo:

- Alarm Summary Active : \ALARM\Z1#####.CSV
- Alarm Summary History : \ALARM\Z2#####.CSV
- Alarm Summary Log : \ALARM\Z3#####.CSV
- Logging Data (Cycle) : \SAMP02\SA#####.CSV
- Logging Data (Trigger) : \SAMP03\SA#####.CSV
- Logging Data (Time) : \SAMP04\SA#####.CSV
- Recipes (Proprietary) : \FILE\ZR#####.CSV
- Pictures : \JPEG\file name.JPG
- Screen Captures : \CAPTURE#\.JPG
- Operation Log : \OPLOG\OLdate\OLtime.CSV

Frequently Asked Questions

- Q: How do I show our capability of Native Tag Import Utility (L5K file import) to my customer?
- A: 1) Open GP-Pro EX and create a new project
 2) Add the Rockwell Automation, Inc EtherNet/IP driver
 Click “Communication Settings”
 Click “Device/PLC 1”
 4) Click the [Settings] button after “PLC1” and select “ControlLogix/CompactLogix Series Native”
 5) Click [Import]
 6) Now you can import the L5K file format.

Q: What are the differences between GP-Pro EX on a PC (WinGP) vs. an AGP?

A:

	WinGP	AGP
Multi Media (movie record / playback)	No	Yes
AGP Logic	No	Yes
Programming Memory	16 Mb	8 Mb
Backup Memory (SRAM)	5 Mb	512 Kb
Supported by Pro-Server EX	Yes	Yes
Pro-Server EX API Available	Yes	Yes
Start Windows Application by Script or Switch	Yes	No
Error Log (communication)	Yes	No
Printer operations using D-Script	No	Yes
Address Monitor	No	Yes
FTP Server	No	Yes
Web Server	No	Yes
Pass Through Feature	No	Yes
AB EtherNet/IP (Including Native Tag)	Yes	Yes
AB DH485	No	Yes
Modbus Slave (SIO & TCP)	Yes	Yes
Modbus Plus	No	Yes
DeviceNet Slave	No	Yes
Siemens S7 MPI	No	Yes
Profibus Slave	No	Yes

Screen Navigation

Company Profile

- Introduction Brand awareness
- History of PFA business in North America
- No. 1 Market Share in the World
- Worldwide Sales & Support
- Worldwide Support Services

Main Menu

WinGP

- What is WinGP?
- Connectivity overview
- WinGP Ethernet Interface
- WinGP Connectable Device List
- Rockwell Native Tag (L5K import)
- WinGP Serial Interface
- Simultaneous Multi-Protocol
- USB interface
- Other Interfaces - CF card and Sound
- What are the benefits of WinGP
- WinGP Example 1
- WinGP Example 2

GP-Pro EX

- GP-Pro EX Overview
- GP-Pro EX Workspace
- GP-Pro EX Helpful tools
- GP-Pro EX Efficient tools
- Address Mapping (drag and drop colors, and variables too)
- Drawing objects
- Images
- Scripting
- More Scripting
- Simulation
- Multi-Platform

GP-Pro EX

- Application Example 1
 - Parts library
 - Symbol library
 - Password protection
 - Multi language
 - Multi function switch
 - Alarm
 - Trends
- Application Example 2
 - Logging
 - Graph
 - Meter
 - Word Switch
 - Bit switch
 - Special switch
 - Numeric display
 - Image import
 - Recipe
 - Security lock
 - Message display
 - Operation Log
 - Execute Application

RAS Functions

- What is RAS?
- RAS System Monitor

- RAS Benefits
- RAS Example 1
- RAS Example 2
- RAS Example 3
- RAS Remote Shutdown

Pro-Server EX

- What is Pro-Server EX?
- Pro-Server EX Benefits 1 of 3
- Pro-Server EX Benefits 2 of 3
- Pro-Server EX Benefits 3 of 3
- Pro-Server EX Example 1
- Pro-Server EX Example 2

GP-Viewer EX

- What is GP-Viewer EX 1 of 2?
- What is GP-Viewer EX 2 of 2?
- GP-Viewer EX Benefits
- GP-Viewer EX Example 1
- GP-Viewer EX Example 2